

Cancer Outcomes and Services Dataset

Upper GI Clinical Leads Workshop
25th November 2010

Trish Stokes, NCIN

NCIN Objectives



- **Promoting efficient and effective data collection throughout the cancer journey**
- Providing a common national repository for cancer datasets
- Producing expert analyses, based on robust methodologies, to monitor patterns of cancer care
- **Exploiting information to drive improvements in standards of cancer care and clinical outcomes**
- Enabling use of cancer information to support audit and research programmes

Using information to improve quality & choice

Essentials for success

- **Clinical engagement**
- **Credible data**
 - High level of data completeness
 - Case mix adjustment
 - Timely
- **Reporting**
 - Easy access to clear, 'bespoke' reports
 - 'Real time' – on line; Annual reports
 - Targeting reports: Clinicians; Trusts; SHAs ; PCTs etc
- **Dissemination in Peer-reviewed settings**
 - Publication, Conferences, Workshops, etc
- **Incorporating performance and outcome data into:**
 - Commissioning
 - Cancer Peer Review & Service Improvement

Using information to improve quality & choice

Cancer Datasets

- Sept 2012

- Cancer Registration Dataset – *mandated for several years*
- Going Further on Cancer Waits – Jan 2009
- Radiotherapy – April 2009
- *Chemotherapy (SACT) – April 2012*
- **Cancer Outcomes and Services Dataset – Sept 2012**
- *(Pathology/Radiology – Professional/Clinical Standards)*

NCIN Cancer Registration Data Views

Patient Pathway

Datasets/Sources

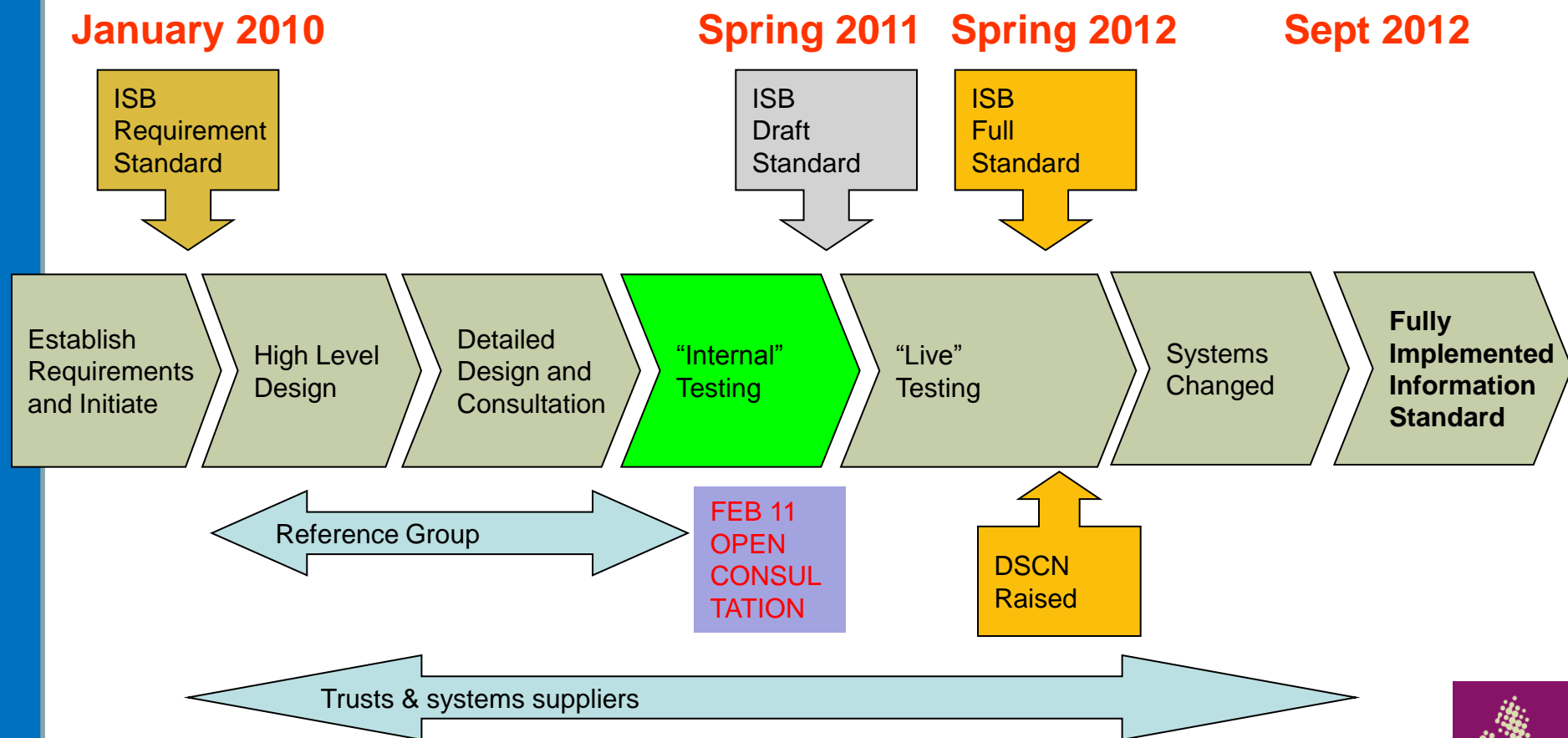
	Referral	Diag	Rx	Rec/Mets	Rx	Pall. Care	Death
CWT							
MDT							
RTDS							
HES							
NCASP							
Ca. Reg							
TOTAL							

Using information to improve quality & choice

Progress this year

- Core dataset reviewed
- Additional core items identified
- Site specific datasets agreed by Clinical Reference Groups
- Software Suppliers Day
- First draft COSD dataset
- Definitional testing
- Identify key RC Path items

Process overview



Operational Testing volunteers wanted

datasets@ic.nhs.uk

Definitional testing reports

National Datasets Service

Cancer Outcomes and Services Dataset (COSD) - UPPER GI - O-G

Data Discovery Analysis - Site Data Report

Site Name: XXXXX

Trust

Date of Report 09/11/2010

COSD - UPPER GI - O-G - Type of Match (Capability)

Number of COSD Upper GI - O-G Dataset Data Items

27

Systemic Capability*		%
System Capability	18	67%

* Including Met and Partially Met

Type of Match Category ¹	No. Data Items	%
Met	18	67%
Partially Met	0	0%
Uncertain	0	0%
Not Met	9	33%
Unanalysed	0	0%
TOTAL NO. DATA ITEMS	27	100%

Systems Used

CMIS - Cancer Management
Information System
Endoweb
iSoft

Note: Data recorded in paper format only is not considered to be 'Met'

¹ Definitions of Type of Match Categories

Met = Data item and all associated values can be fully mapped

Partially Met = The equivalent system data item exists but there is not an exact match of associated values

Uncertain = More information is required before determining whether the data item can be mapped

Not Met = The data item and/or values cannot be successfully mapped or matched to a data item in the system

Unanalysed = Data item not analysed

COSD - UPPER GI - O-G Type of Match

Met Partially Met Uncertain Not Met Unanalysed



COSD Dataset

Dataset Section	# Items
Core	133
Additions to Core	10
Brain	15
Breast	17
Colorectal	28
CTYA*	61
Gynae	5
Haematology*	69
Head & Neck	30
Lung	11
Sarcoma*	10
Skin*	52
Upper GI*	163
Urology	13
TOTAL	617

COSD

* Include some disease specific and some repeating data items within the subsets

Using information to improve quality & choice

Site specific datasets

LIVER CHOLANGIOCARCINOMA (34)

LIVER HCC (34)

LIVER METS (34)

PANCREATIC (33)

OG (28)

Data template

Cancer Outcomes and Services Dataset - CTYA

Version: 0.2

Data Item Name	Description	Format	National Code	National code definition
PROCEDURES				
CONSULTANT CODE - ENDOSCOPIC / RADIOLOGIC THERAPY	The GMC code of the consultant responsible for providing the care to the patient.	an8		CONSULTANT CODE
ENDOSCOPIC PROCEDURE DATE/RADIOLOGICAL PROCEDURE DATE	The date that the first therapeutic endoscopic procedure was performed	an10 ccyy-mm-dd		
TYPE OF ENDOSCOPIC PROCEDURE	The main endoscopic procedures carried out. More than one procedure can be entered.	an1	1	Stent insertion
			2	Laser
			4	Photodynamic therapy
			7	Dilation
			8	other
PHOTODYNAMIC THERAPY	Was photodynamic therapy performed	an2	Y	Yes
			N	No
			99	Unknown
				Insert extra rows here
ANAESTHESIA USED	The type of anaesthetic used during the procedure	an1	1	Sedation
			2	Local anaesthetic spray
			3	General anaesthetic
			4	Sedation and local anaesthetic spray combined
				Insert extra rows here

Using information to improve quality & choice

Draft Data items

- **BODY MASS INDEX**
- **FEV1 PERCENTAGE**

CARE PLAN

- **DATE**
- **TREATMENT TYPE**

ENDOSCOPIC PROCEDURE

- **CONSULTANT CODE**
- **DATE**
- **TYPE**
- **PHOTODYNAMIC THERAPY PERFORMED**
- **ANAESTHESIA USED**
- **INTENT FOR BILIARY STENT**
- **SUCCESS OF DEPLOYMENT**
- **COMPLICATIONS**

- **STAGING LAPAROSCOPY + IOUS**
- **SURGICAL ACCESS (LAPAROSCOPIC OR OPEN)**
- **VASCULAR RESECTION AND TYPE**
- **SURGICAL COMPLICATIONS/ RETURN TO THEATRE**

Using information to improve quality & choice

Draft Data Items (2)

POST OP LIVER SEGMENTS INVOLVED WITH CANCER

- SEGMENT 1
- SEGMENT 2
- SEGMENT 3
- SEGMENT 4
- SEGMENT 5
- SEGMENT 6
- SEGMENT 7
- SEGMENT 8

➤ ASA SCORE

- SURGICAL PALLIATION (HEPATICOJEJUNOSTOMY)
- RADIOLOGICAL, PALLIATION (TYPE OF STENT)

- PRE EXISTING LIVER DISEASE
- HEPATITIS STATUS
- CHILDS-PUGH SCORE
- CLIP SCORE
- METASTATIC SITE (AT DIAGNOSIS)

Using information to improve quality & choice

Definitional testing reports

National Datasets Service

Cancer Outcomes and Services Dataset (COSD) - UPPER GI - O-G

Data Discovery Analysis - Site Data Report

Site Name: XXXXX

Trust

Date of Report 09/11/2010

COSD - UPPER GI - O-G - Type of Match (Capability)

Number of COSD Upper GI - O-G Dataset Data Items

27

Systemic Capability*		%
System Capability	18	67%

* Including Met and Partially Met

Type of Match Category ¹	No. Data Items	%
Met	18	67%
Partially Met	0	0%
Uncertain	0	0%
Not Met	9	33%
Unanalysed	0	0%
TOTAL NO. DATA ITEMS	27	100%

Systems Used

CMIS - Cancer Management
Information System
Endoweb
iSoft

Note: Data recorded in paper format only is not considered to be 'Met'

¹ Definitions of Type of Match Categories

Met = Data item and all associated values can be fully mapped

Partially Met = The equivalent system data item exists but there is not an exact match of associated values

Uncertain = More information is required before determining whether the data item can be mapped

Not Met = The data item and/or values cannot be successfully mapped or matched to a data item in the system

Unanalysed = Data item not analysed

COSD - UPPER GI - O-G Type of Match

Met Partially Met Uncertain Not Met Unanalysed



Useful links

NHS Information Centre (dataset)

www.ic.nhs.uk/services/datasets/document-downloads/cancer

Datasets@ic.nhs.uk

NCIN

www.ncin.org.uk

trish.stokes@nhs.net

Driley@nhs.net