

Cancer Registry data

What are available?

Sandra Edwards

July 19, 2011

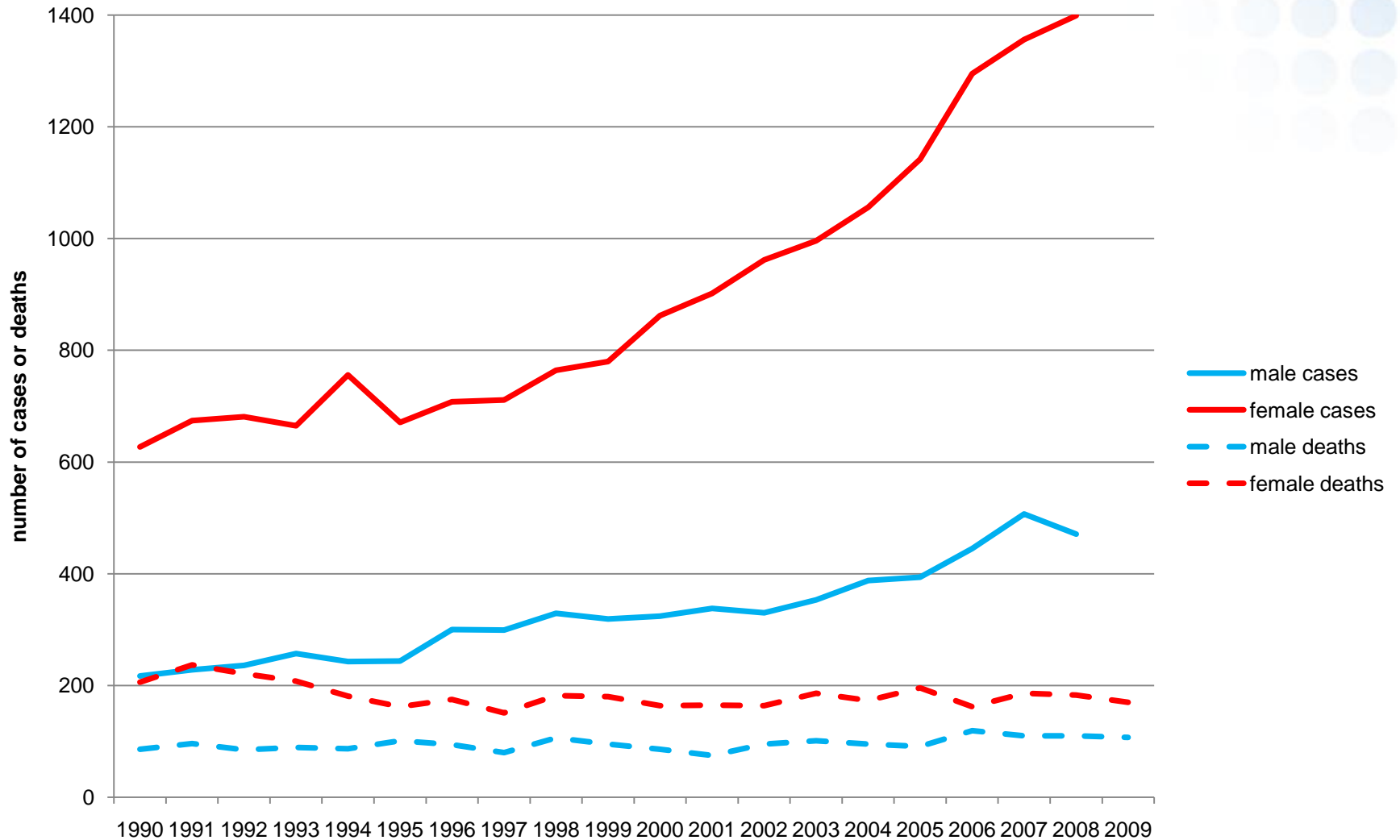
Main National data sources for all cancers - 1

UK Cancer Intelligence Service - UKCIS

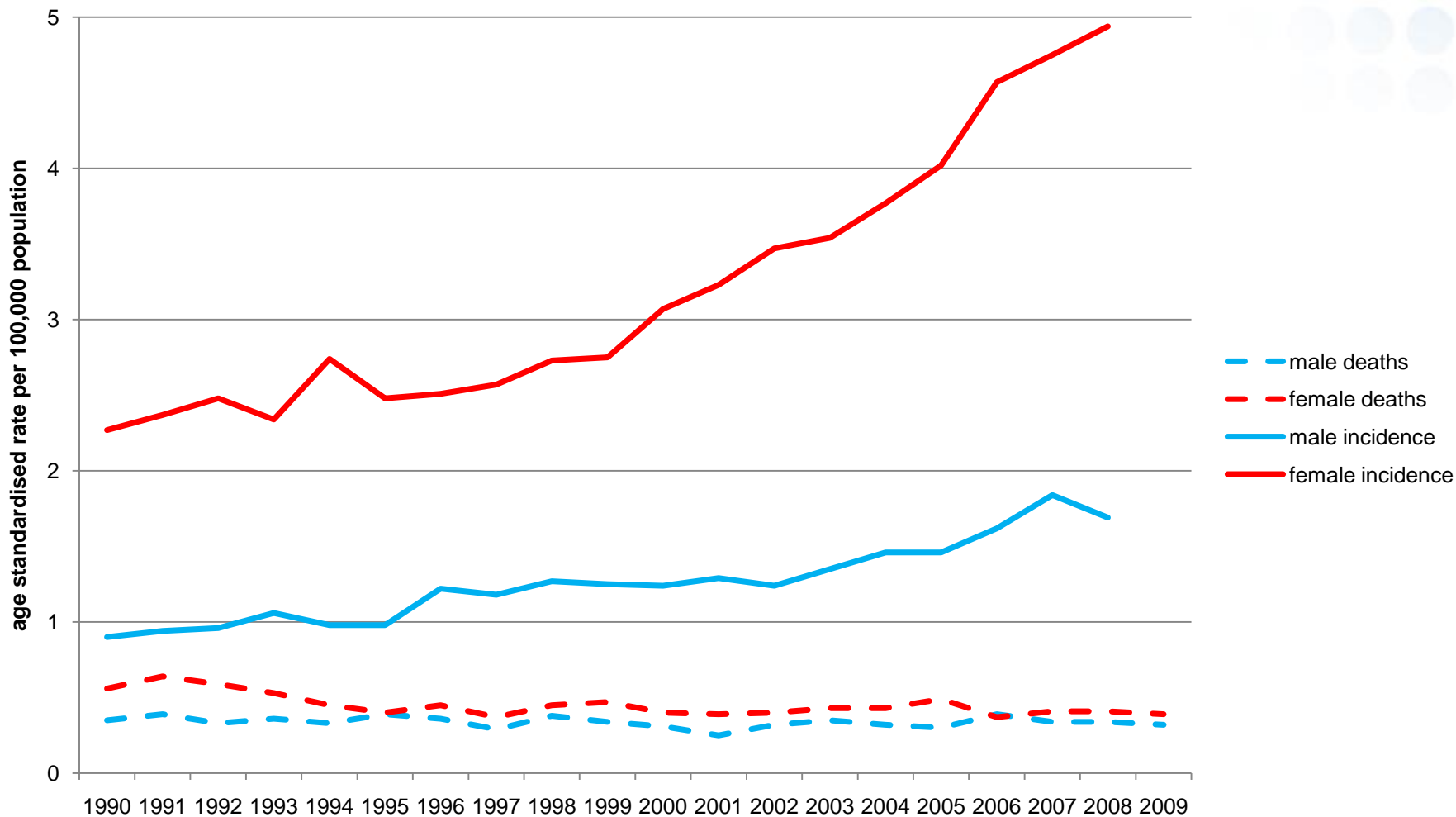
- Access available via NHS Net to relevant users
- 1988 to 2008
- Incidence, Deaths, Survival
- Aggregated data only
- Numbers, age standardised rates
- SHA, PCT, Cancer Network
- GOR, County, LA/UA

- See www.ncin.org.uk for application form

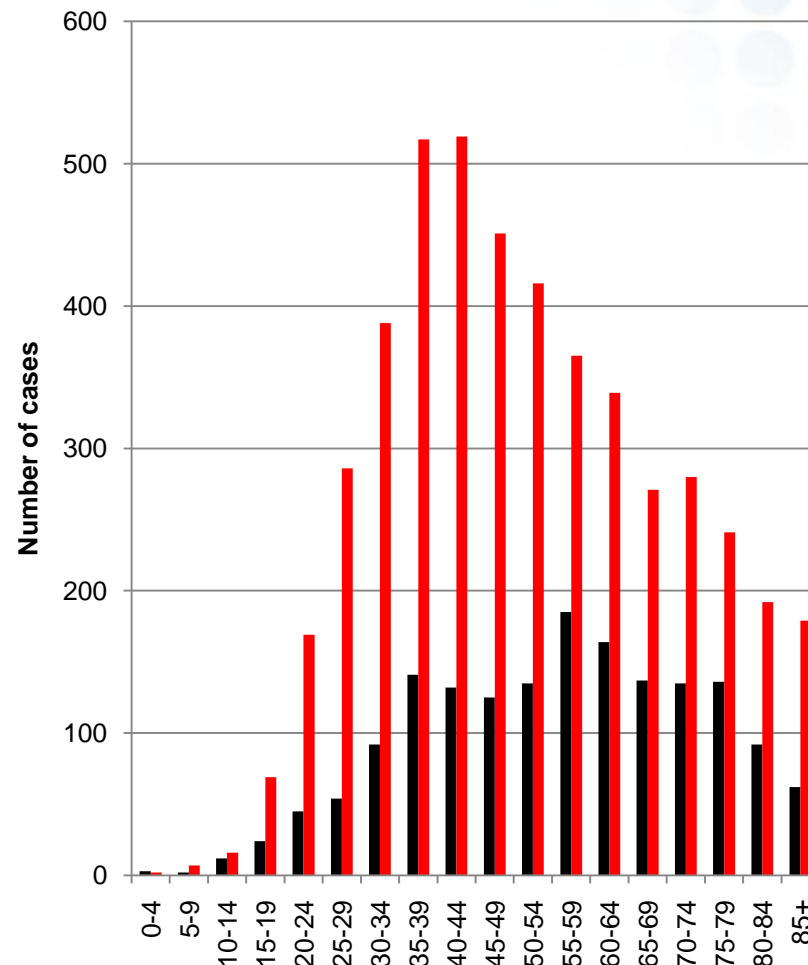
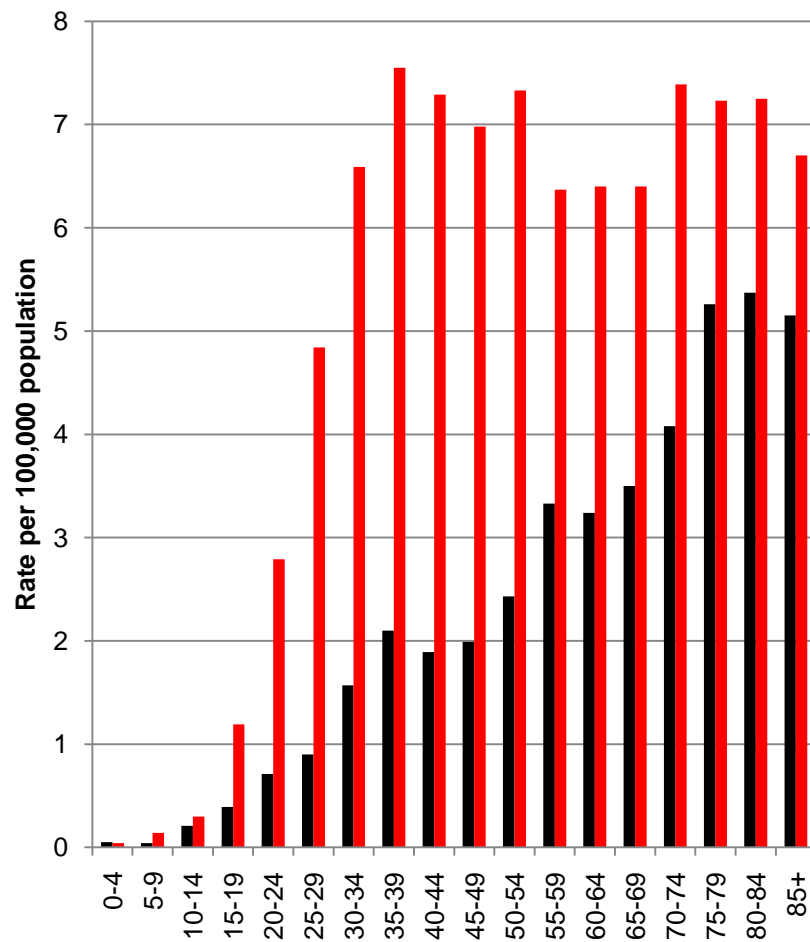
Thyroid cancer cases and deaths for England



Thyroid cancer age standardised incidence and mortality rates for England



England data for 2006 to 2008 - cases



Main National data sources for all cancers - 2

National Cancer Data Repository – NCDR

- Data available from Cancer registries on request
- 1990 to 2008
- Individual tumour records
- Treatment flags
- Morphology
- Ethnicity
- Can be linked to HES records

- Confidentiality rules apply

NCRD – what's well recorded?

Geography – from postcode

Gender

Age at diagnosis

Morphology

NHS number

Treatment flags Y/N/U – within 6 months

Death date (and cause)

Ethnicity – later years

NCRD – what's not (well) recorded at present?

Stage

Size

Treatment details – hospital, consultant

Surgery codes - OPCS4

Late treatment

Recurrences



www.ociu.nhs.uk

enquiries@ociu.nhs.uk

sandra.edwards@sph.nhs.uk

monica.roche@sph.nhs.uk