

Improved Survival of Breast Cancer Patients in the UK Breast Screening Programme

NCIN and UKACR Conference
16 June 2011

Gill Lawrence
Director

West Midlands Cancer Intelligence Unit

Shan Cheung, Olive Kearins
West Midlands Breast Screening QA Reference Centre

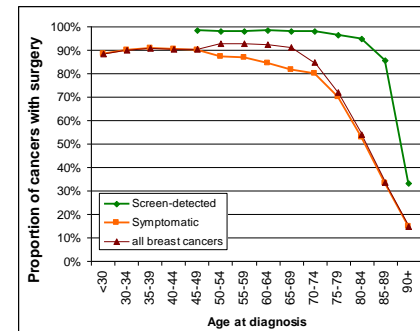


West Midlands Cancer Intelligence Unit

Variation in surgical treatment with age and presentation route

- Breast cancer patients have a relatively good prognosis
- The majority of breast cancer patients have surgery
- In 2007 82% of the women diagnosed with breast cancer in the UK had surgery recorded

- Symptomatic 75%
- Screen-detected 98%
 - ❖ better prognostic factors
 - ❖ younger age
 - ❖ fewer co-morbid conditions
- Surgery decreases with age at diagnosis

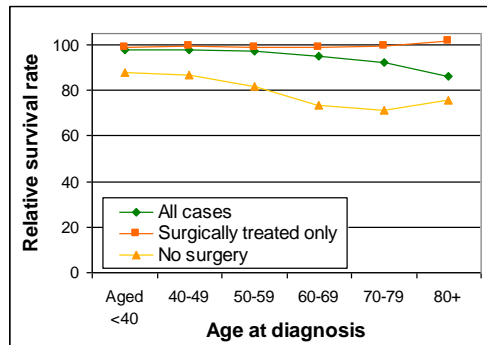


West Midlands Cancer Intelligence Unit

Breast cancer survival



- For women with symptomatic invasive breast cancers, having surgery improves survival



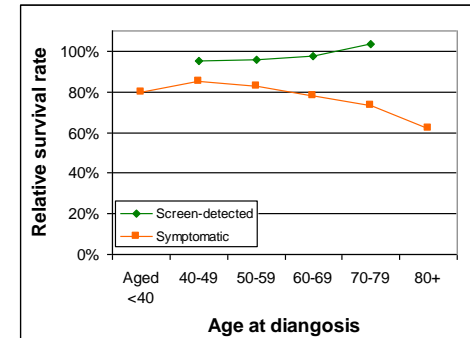
1-year relative survival for cancers diagnosed in 2007

West Midlands Cancer Intelligence Unit

Variation in survival with age and presentation route



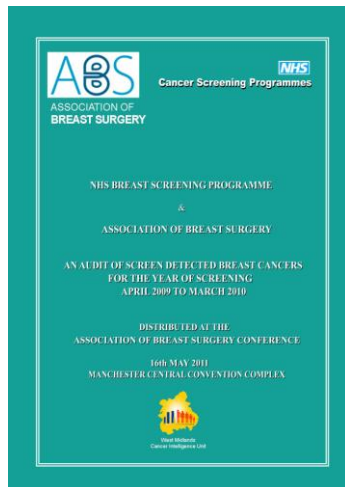
- Women with screen-detected invasive breast cancers have better survival than women with symptomatic breast cancer regardless of their age



5-year relative survival for cancers diagnosed in 2002/03

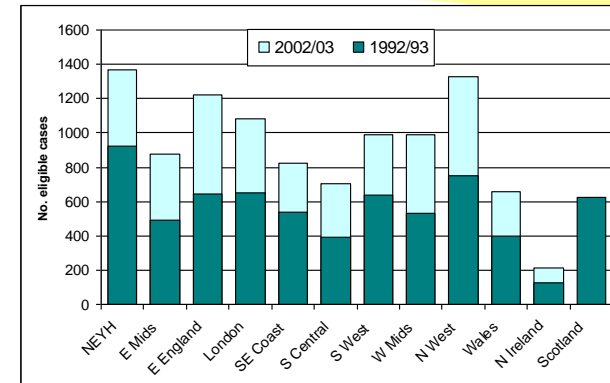
West Midlands Cancer Intelligence Unit

Survival - screen-detected breast cancers diagnosed in 1992/93 and 2002/03



- Part of the annual audit of the UK NHS Breast Screening Programme
- Relative survival analysis – comparing survival to that in the general population
- Death information obtained from cancer registries
- UK level Life Tables obtained from the Office for National Statistics
- Calculations done in STATA using the Ederer II method

West Midlands Cancer Intelligence Unit



Eligible cases

	1992/93		2002/03	
	No.	%	No.	%
Screen-detected cases	7,025	100	10,680	100
Cases not registered	190	3	208	2
Not primary breast cancer	111	2	181	2
Eligible cases	6,705	95	10,252	96



West Midlands Cancer Intelligence Unit

Tumour behaviour and age distribution

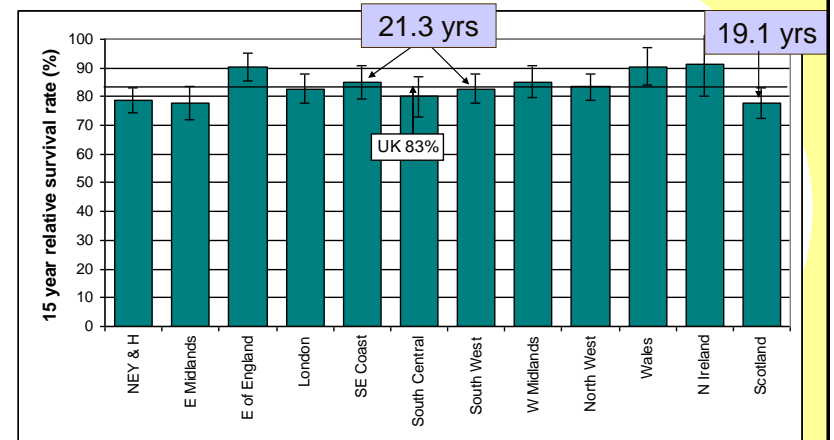


Parameter		1992/93		2002/03	
		No.	%	No.	%
Invasive status	Invasive	5,573	83	8,131	79
	Non-invasive	1,025	15	2,012	20
	Micro-invasive	107	2	109	1
	Total	6,705	100	10,252	100
Age group (invasive cancers only)	<50	87	2	111	1
	50-52	763	14	1,229	15
	53-55	924	17	1,243	15
	56-58	1,024	18	1,338	16
	59-61	1,134	20	1,377	17
	62-64	1,238	22	1,322	16
	65+	403	7	1,511	19
Total		5,573	100	8,131	100



West Midlands Cancer Intelligence Unit

15-year relative survival for screen-detected invasive breast cancers diagnosed in 1992/93



In the UK, average life expectancy at age 65 is 20.4 yrs

West Midlands Cancer Intelligence Unit

Breast cancer survival

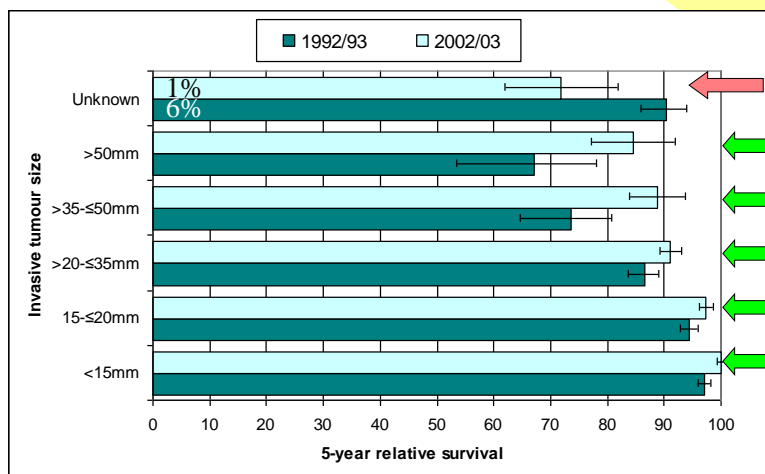
- Relative survival at **10 years** for all women diagnosed with invasive breast cancer in England in 1992/93 is **67%**
- Relative survival at **15 years** for invasive breast cancers diagnosed by **screening** in the UK in 1992/93 is **83%**
- This difference reflects the **earlier stage** at diagnosis of cancers detected by the NHS Breast Screening Programme

West Midlands Cancer Intelligence Unit

Parameter		1992/93		2002/03	
		No.	%	No.	%
Invasive cancer size	<15mm	2672	48	4421	54
	15-≤20mm	1561	28	2000	25
	>20-≤35mm	842	15	1272	16
	>35-≤50mm	132	2	221	3
	>50mm	62	1	118	1
	Unknown	304	6	99	1
Invasive grade	Grade I	1552	28	2712	33
	Grade II	2059	37	3898	48
	Grade III	870	15	1333	16
	Not assessable	154	3	41	1
	Unknown	938	17	147	2
Nodal status (invasive)	Negative	2347	42	5882	72
	Positive	1010	18	1913	24
	Unknown	2216	40	336	4
NPI group (invasive)	EPG	633	11	2000	25
	GPG	884	16	2712	33
	MPG1	706	13	1778	22
	MPG2	334	6	752	9
	PPG	214	4	440	5
	Unknown	2802	50	449	6
Total		5573	100	8131	100

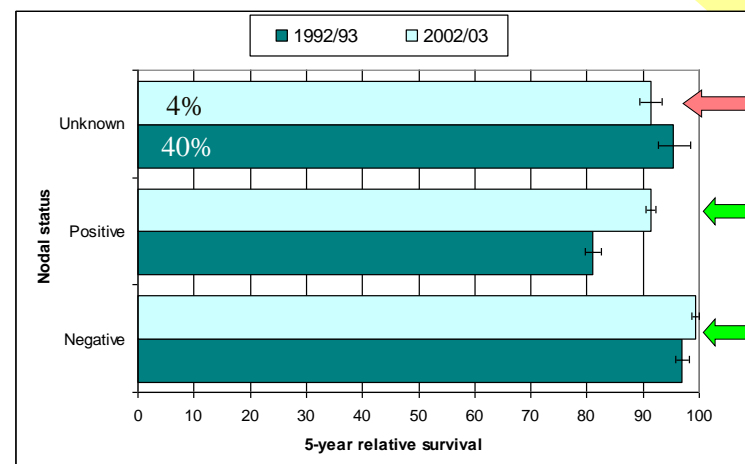
West Midlands Cancer Intelligence Unit

Variation in survival with invasive tumour size



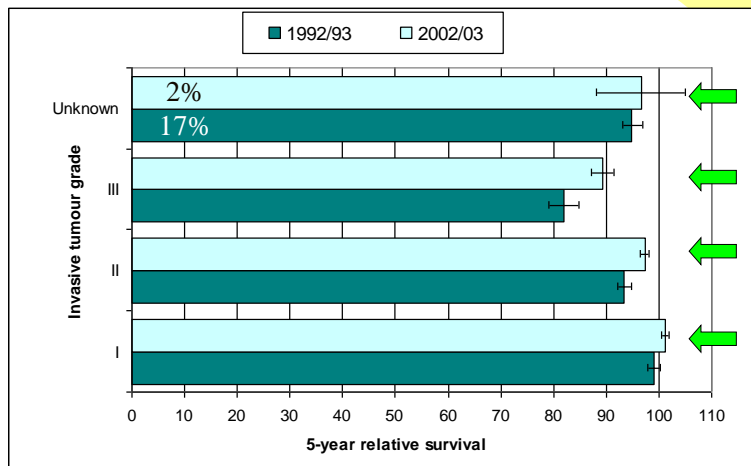
West Midlands Cancer Intelligence Unit

Variation in survival with nodal status



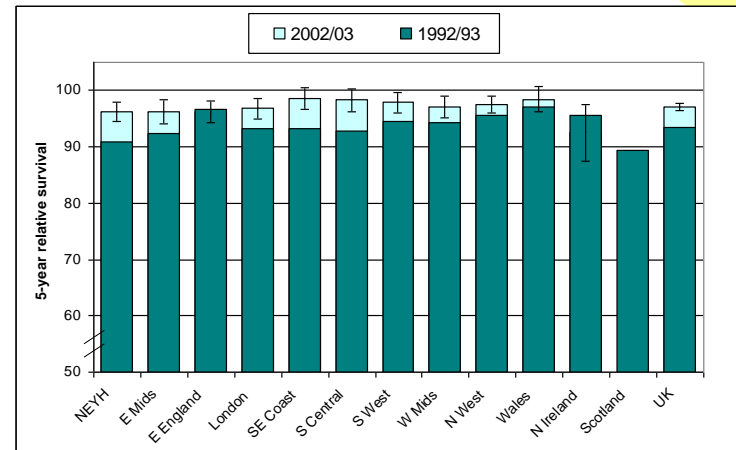
West Midlands Cancer Intelligence Unit

Variation in survival with tumour grade



West Midlands Cancer Intelligence Unit

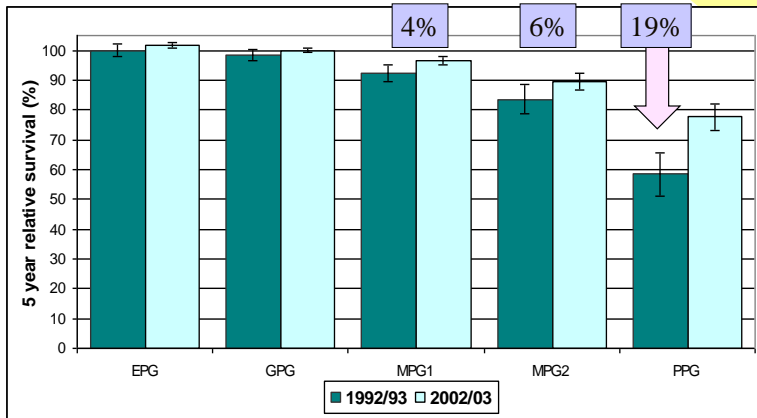
5-year relative survival rates for screen-detected invasive breast cancers



UK survival rate 1992/93 = **93.5%**, UK survival rate 2002/03 = **97.2%**

West Midlands Cancer Intelligence Unit

5-year relative survival and NPI SD invasive cases 1992/93 and 2002/03



Significantly improved survival for PPG cancers due to new adjuvant therapies

West Midlands Cancer Intelligence Unit

Summary



- The number of screen-detected breast cancers increased from
 - 7,025 in 1992/93 to
 - 10,680 cases in 2002/03
 - There will be further increases as the NHSBSP is expanded in England to include women aged 47-73
- The recording of tumour characteristics has improved markedly since 1992/93
 - Nodal status unknown – 40% to 4%
 - Grade unknown – 17% to 2%
 - NPI unknown – 50% to 6%
- 5-year relative survival has improved
 - UK survival rate 1992/93 = 93.5%
 - UK survival rate 2002/03 = 97.2%
- The greatest improvement in survival is for cancers in the poor prognostic group (19%)
 - Due to improved adjuvant therapy

West Midlands Cancer Intelligence Unit



Thankyou
Thankyou

West Midlands Cancer Intelligence Unit