

Does socio-economic deprivation increase the chance of death in hospital for cancer patients ?

Andy Pring

15 June 2011



South West Public Health Observatory



Do social factors affect where patients die : an analysis of 10 years of cancer deaths in England

*Irene Higginson, Brian Jarman, Paul Astin and Susan Dolan
Journal of Public Health, Vol 21 No1 (1999)*

Where do cancer patients die ?

West Midlands Cancer Intelligence Unit R11/02 (April 2011)



South West Public Health Observatory



Methods

Public Health Annual Mortality Extract - ONS

Deaths of people resident in England

Registered between 2007-09

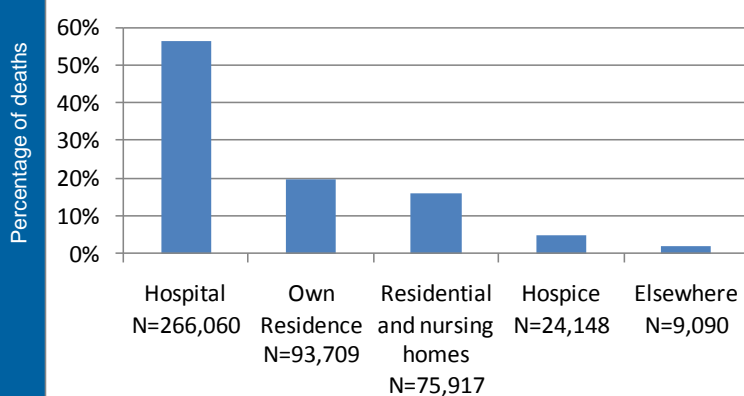
Income domain IMD 2007



South West Public Health Observatory



Death in hospital All causes



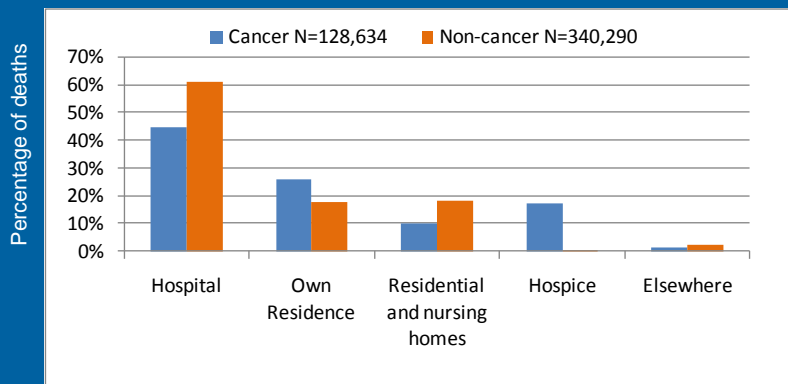
England 2007-09



South West Public Health Observatory

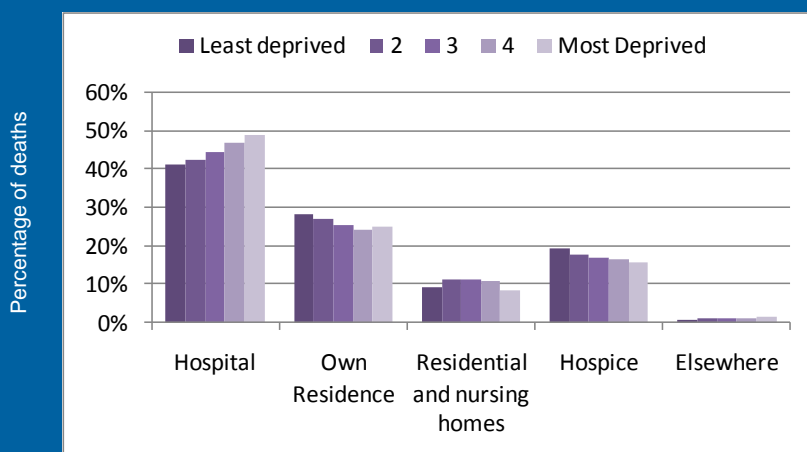


Death in hospital



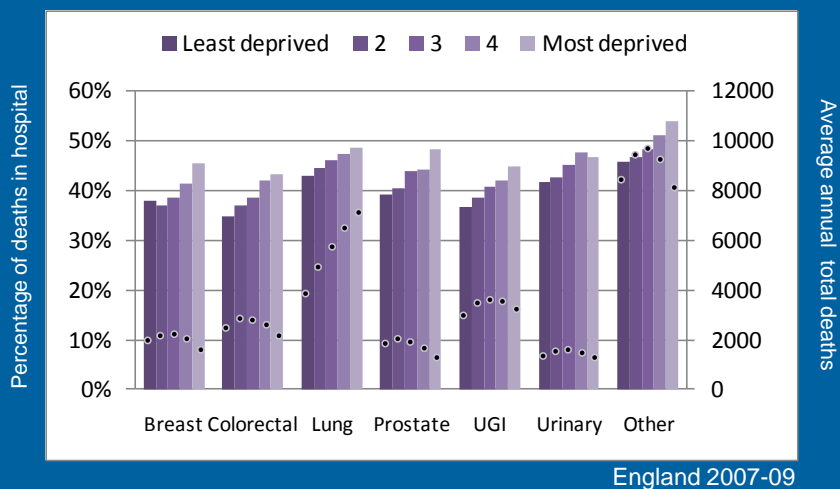
England 2007-09

Deaths from cancer, Place of death and social deprivation

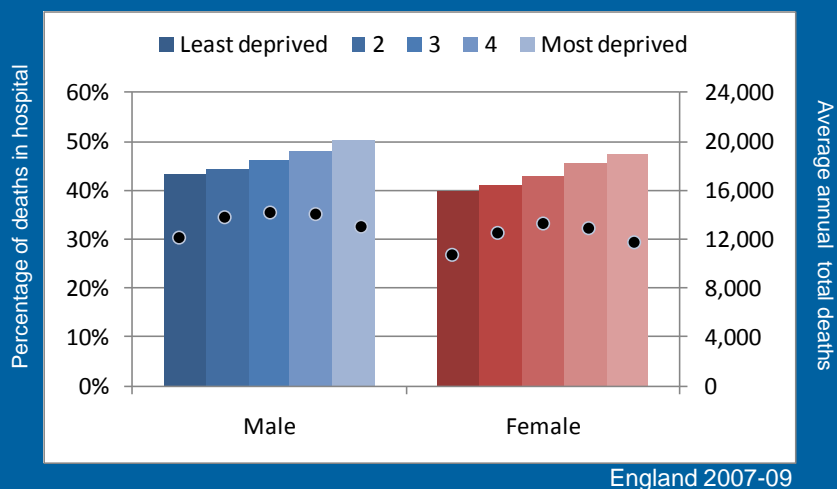


England 2007-09

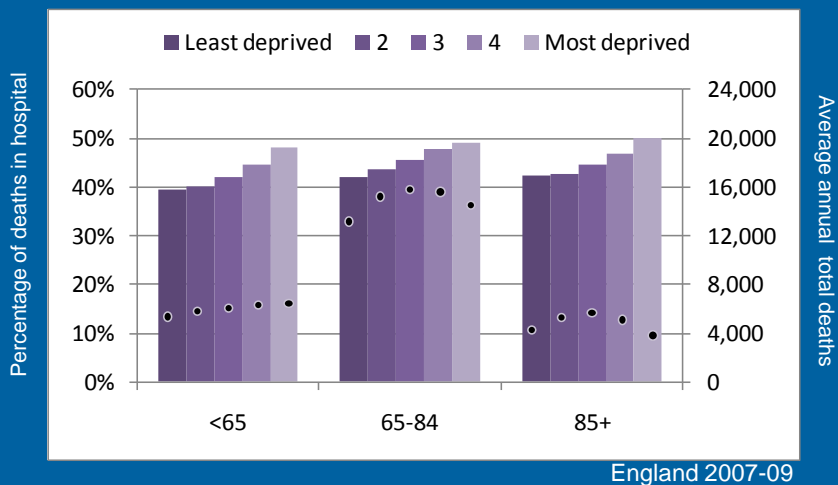
Deaths in hospital from cancer By cancer site and social deprivation



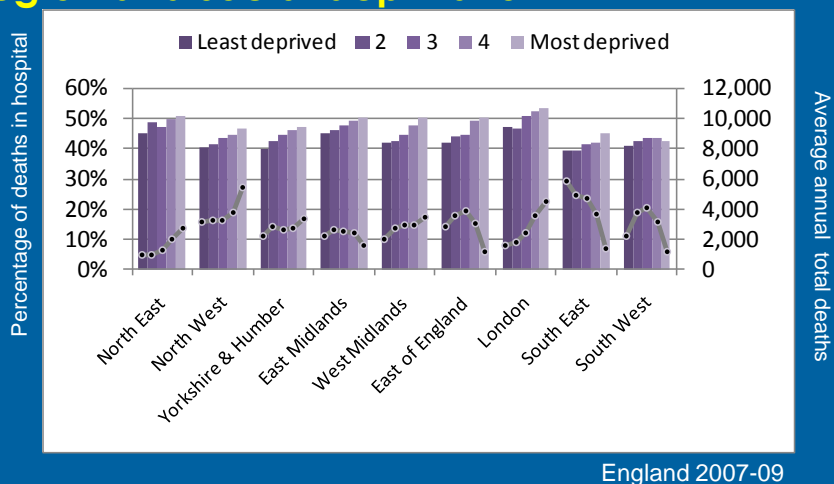
Deaths from cancer By gender and social deprivation



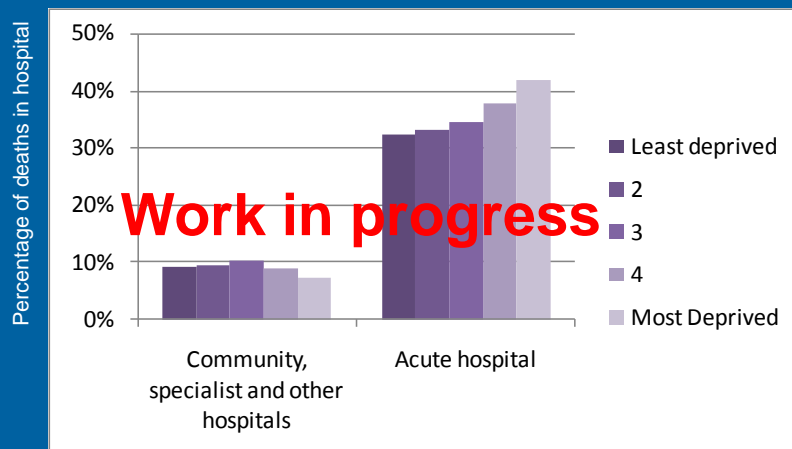
Deaths from cancer By age and social deprivation



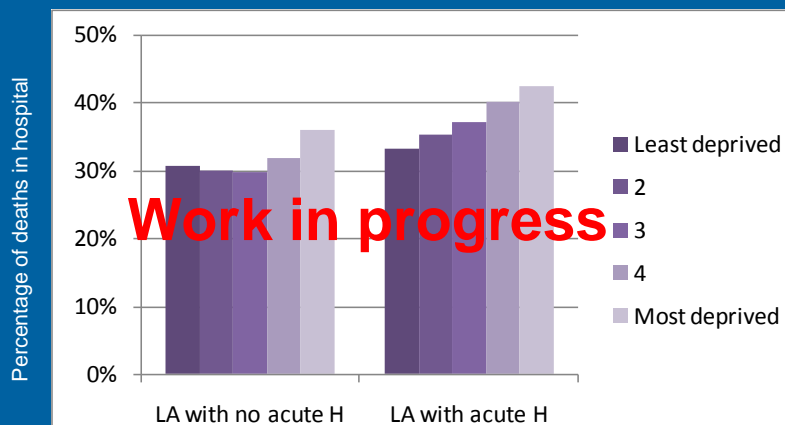
Deaths from cancer, By government office region and social deprivation



Deaths from cancer By hospital type and social deprivation

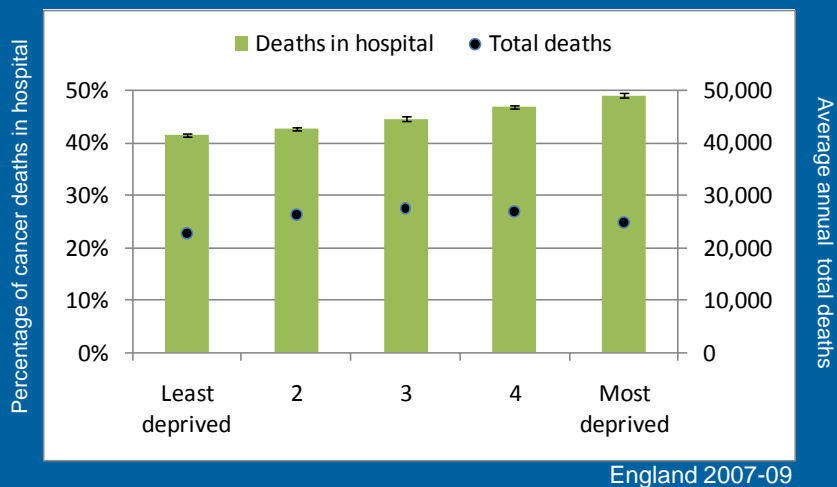


Deaths from cancer By local authority type and social deprivation



Deaths from cancer

Age, sex, Cause of death Standardised rates



YES - Social deprivation increases the chance of dying in hospital for cancer patients

Why ?

Does it matter ?

YES - Social deprivation increases the chance of dying in hospital for cancer patients

Why ?

Access to Resources

- Social care
- Support family, friends
- Residential circumstance
- Financial circumstance

Campbell, Grande, Wilson, Caress & Roberts : Exploring differences in referrals to a hospice at home service in two socio-economically distinct areas of Manchester.
Palliative Medicine 2009 0(00) 1-7



South West Public Health Observatory



YES - Social deprivation increases the chance of dying in hospital for cancer patients

Does it matter ?

“ How we care for the dying is an indicator of how we care for all sick and vulnerable people.

It is a measure of a civilised society and a benchmark for health and social care services ”

National End of Life Care Strategy Advisory Board, 2007. Emerging themes end of life care.



South West Public Health Observatory



Please visit our Website:
www.swpho.nhs.uk



South West Public Health Observatory

