

NCIN
national cancer
intelligence network



Using information to improve quality & choice

What is the NCIN?

Dr Mick Peake

Clinical Lead, NCIN

www.ncin.org.uk

NCIN

national cancer
intelligence network



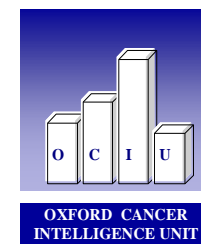
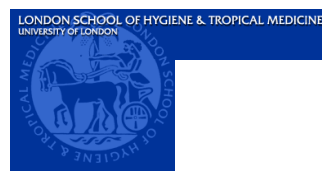
Using information to improve quality & choice

Goal for NCIN: “To develop the best cancer information service of any large country in the world – by 2012”

Mike Richards 2007

www.ncin.org.uk

NCIN Partners



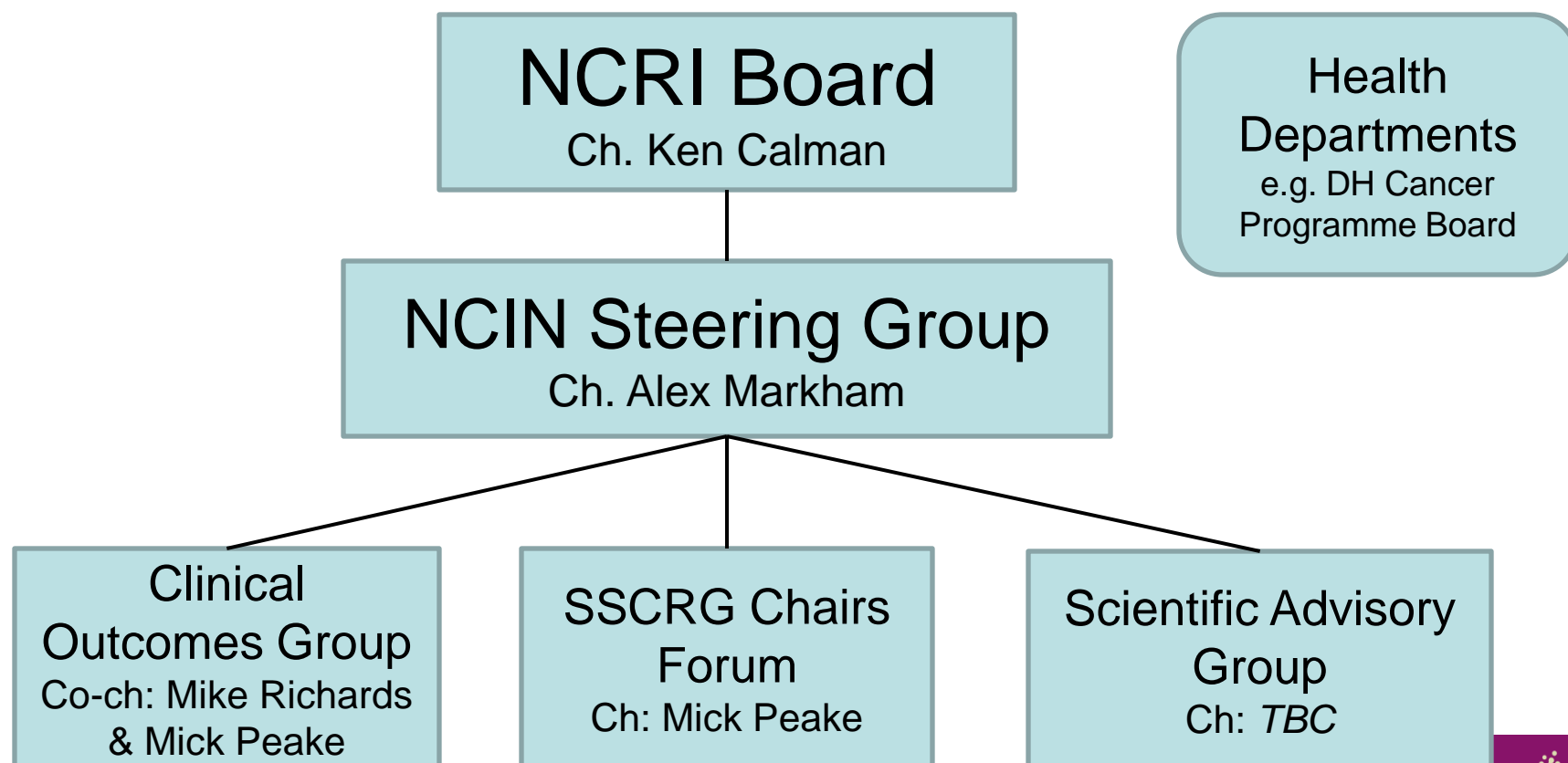
Using information to improve quality & choice

NCRI Members



Using information to improve quality & choice

NCIN Governance



NCIN core objectives



- **Promoting efficient and effective data collection throughout the cancer journey**
- **Providing a common national repository for cancer datasets**
- **Producing expert analyses, based on robust methodologies, to monitor patterns of cancer care**
- **Exploiting information to drive improvements in standards of cancer care and clinical outcomes**
- **Enabling use of cancer information to support audit and research programmes**

Site-Specific Clinical Reference Groups

- Brain/CNS
- Breast
- Children, Teenage & Young Adults
- Colo-rectal
- Gynaecological cancers
- Haematological cancers (including lymphoma)
- Head & Neck (including thyroid)
- Lung (including mesothelioma)
- Bone & soft tissue Sarcoma
- Skin (including non-melanoma)
- Upper GI (including Hepato-biliary)
- Urology (all 4 sub-types)

Site-Specific Clinical Reference Groups

- In place for almost 18 months
- All have met at least thrice
- Membership becoming stable (open recruitment over the next 9 -18 months)
- Strong links emerging with professional bodies
- Chairs' Forum meets 3 times a year
- 11 groups have held workshops with NSSG chairs to date
- Main work to date:
 - National Cancer Dataset
 - Review of merged HES/CR data
 - Work programmes
 - Some 'data briefings'
 - Supporting Peer Review (Clinical Lines of Enquiry)

'Cross-cutting' Clinical Issue Groups

- **Radiotherapy** (RES sub-group → RT Clinical Information Group – sub-group of NRIG)
- **Chemotherapy** (Chemotherapy Dataset Group → sub-group of NCIG)
- **Pathology** (RCPath datasets)
- **Radiology**: Joint RCR/NCIN working party
 - Proforma-based (codable) reporting (diagnosis/stage)
 - Extraction of data from RIS systems
- **Co-morbidity** advisory group being formed
 - Call for bids to go out shortly

National Cancer Dataset Review



- Managed by The Information Centre
- Chaired by NCIN
- Draft dataset in collaboration with SSCRGs by end September 2009
- ‘Sign off’ by Project Board, end December 2009
- Work with Information Standards Board 2010
- ‘Data Set Change Notice’ November 2011?
- Fully operational April 2012?

National Cancer Data Repository (NCDR)



- Currently contains:
 - ONS 1971 - 2006 (9.2m tumours)
 - Registries 1990 - 2006, includes stage and treatments (5.3m tumours)
 - IP HES 1997 - 2007 (33m episodes, 4.9m patients)
 - GP Research Database linkage complete
- Being updated for
 - Registrations up to 2007
 - NCASP data (lung, colorectal, H&N)
 - HES outpatients
 - Radiotherapy data to follow 2010

Using information to improve quality & choice

Expert analyses

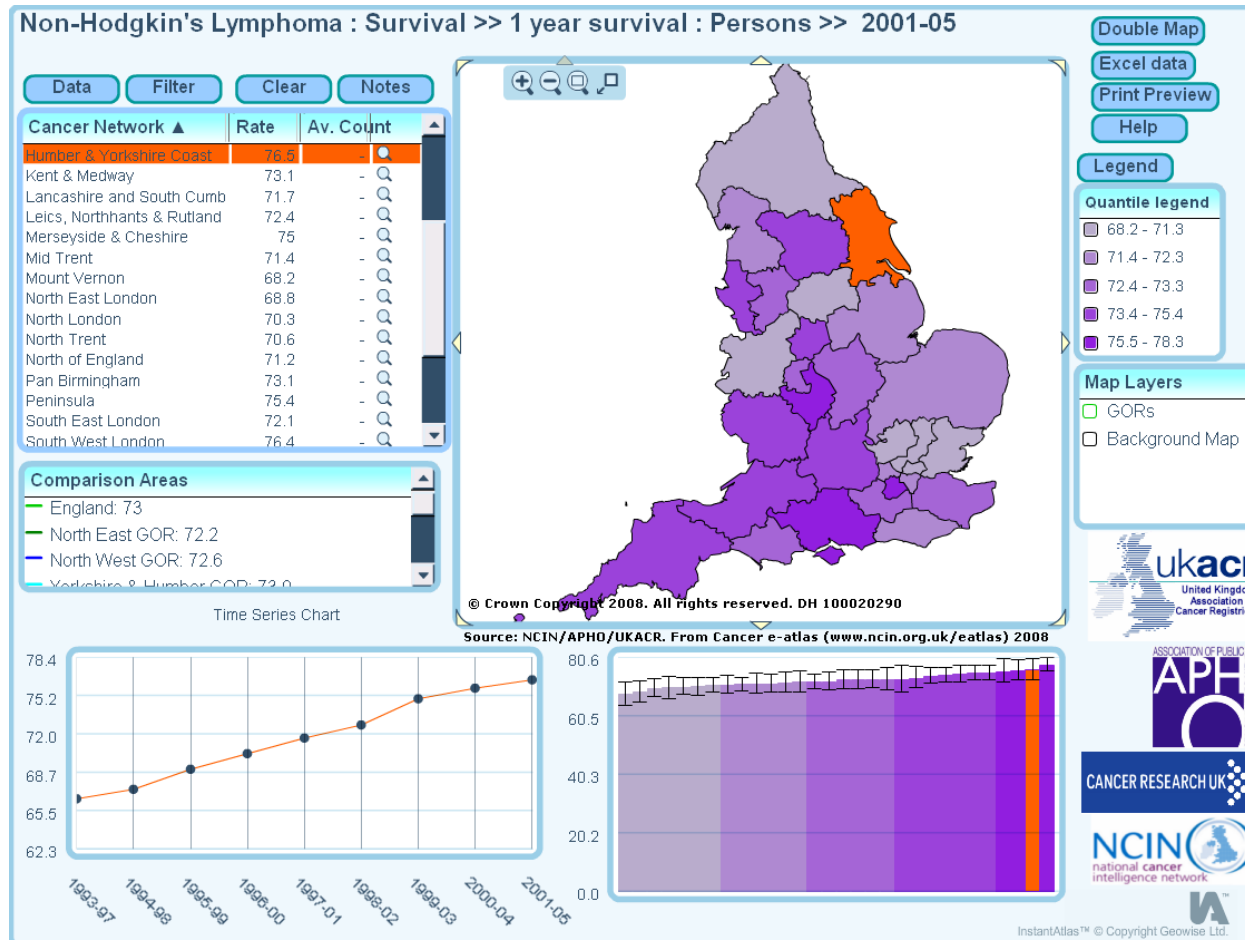
- Cancer eAtlas: - launched July 2008
www.ncin.org.uk/eatlas
 - Large and varied interest
 - International recognition
- Reports on:
 - UK incidence & mortality
 - One year survival
 - Deprivation
 - Prevalence
 - Ethnicity
 - Male cancers
 - Cancer in the Elderly
- Microsites

e-Products

- UK Cancer Information Service (UKCIS)
- UK, 2006 Incidence, mortality and survival
- Updated Cancer e-Atlas (incl.prevalence)
- England, 2006 Incidence and mortality
- Cancer Commissioning Toolkit (updated)
- Various portals:
 - Inequalities portal (with National Cancer Equality Initiative): www.ncin.org.uk/inequalities
 - Cancer mortality by PCT

National Cancer e-Atlas

www.ncin.org.uk/eatlas



Expert analyses

- Cancer eAtlas: - launched July 2008
www.ncin.org.uk/eatlas
 - Large and varied interest
 - International recognition
- Reports on:
 - UK incidence & mortality
 - One year survival
 - Deprivation
 - Prevalence
 - Ethnicity
 - Male cancers
 - Cancer in the Elderly
- Microsites

New cancer cases, crude and age-standardised* incidence rates per 100,000 (with 95% confidence intervals), Cancer Networks, UK, 2005



Trends in one year cancer survival, England, 1985-2004



C00-C97 excl. C44: All malignant neoplasms (excl. non-melanoma skin cancer)

Males					Females					Persons				
Cancer Network	Number of cases	Crate rate	95% confidence interval	Number of cases	Crate rate	95% confidence interval	Number of cases	Crate rate	95% confidence interval					
W1 Lancashire and South-Central CH	4,417	563.5	448.9 - 652.6 - 459.2	4,157	564.2	369.0 - 644.4 - 387.9	8,574	523.1	409.0 - 520.1 - 409.1					
W2 Greater Manchester and Cheshire CH	7,553	510.4	430.0 - 644.4 - 489.3	7,123	482.8	387.2 - 485.5 - 386.8	14,675	498.1	405.8 - 489.2 - 430.0					
W3 Merseyside and Cheshire CH	4,868	565.3	442.4 - 651.0 - 458.4	5,208	525.2	367.2 - 382.5 - 384.0	10,076	525.4	430.4 - 430.0 - 430.1					
W4 Yorkshire CH	8,055	476.9	410.9 - 481.0 - 471.8	8,055	465.2	361.8 - 345.2 - 364.8	12,221	471.1	368.0 - 370.0 - 369.0					
W5 Greater and Yorkshire Coast CH	2,889	526.8	438.3 - 388.6 - 435.7	2,987	562.6	369.4 - 342.4 - 371.4	5,876	519.2	379.8 - 380.0 - 380.2					
W6 South-Trent CH	4,425	580.7	459.4 - 430.0 - 465.2	4,408	518.8	359.8 - 368.7 - 367.2	8,833	521.6	404.4 - 380.0 - 380.1					
W7 East-England CH	8,819	469.1	403.1 - 421.2 - 434.0	8,231	430.0	304.4 - 345.1 - 347.8	17,050	447.6	366.2 - 381.1 - 381.0					
W8 North-England CH	7,219	482.1	364.4 - 370.0 - 370.0	7,298	468.3	350.8 - 272.0 - 268.0	14,517	455.0	350.0 - 371.0 - 371.0					
W9 West-England CH	4,269	562.2	418.0 - 450.0 - 451.4	4,418	487.8	368.4 - 474.4 - 370.0	8,687	520.1	390.0 - 380.0 - 380.1					
W10 Yorkshire CH	7,372	519.2	428.4 - 455.4 - 454.4	7,685	504.4	361.0 - 350.0 - 360.0	15,057	490.8	390.2 - 374.1 - 374.0					
W11A York, North-England and East-England CH	8,464	491.6	428.0 - 430.0 - 430.0	8,426	468.8	361.2 - 362.2 - 364.2	16,890	479.2	377.8 - 380.0 - 380.0					
W12A Mersey-Spacer CH	2,466	491.7	377.8 - 382.0 - 382.0	2,556	447.6	351.1 - 378.4 - 368.4	5,022	470.2	360.0 - 345.0 - 345.0					
W12B Mersey-Spacer CH	3,128	561.1	372.4 - 382.0 - 382.0	3,128	560.8	368.8 - 378.4 - 368.4	6,256	561.0	384.4 - 342.0 - 342.0					
W13 South-London CH	2,873	367.8	368.0 - 368.7 - 455.4	2,926	333.7	307.0 - 300.0 - 311.0	5,800	351.8	349.8 - 349.8 - 367.1					
W14 North-West-London CH	2,472	320.2	364.0 - 363.1 - 378.8	2,491	333.0	301.7 - 298.2 - 334.2	4,963	334.1	333.0 - 324.4 - 342.0					
W15 South-East-London CH	2,807	370.8	360.0 - 368.3 - 418.8	2,891	377.6	342.4 - 320.0 - 335.8	5,698	379.2	332.0 - 320.0 - 320.0					
W16 South-West-London CH	2,522	380.7	419.0 - 388.0 - 431.2	2,455	385.3	332.0 - 218.8 - 346.4	4,977	376.3	373.8 - 380.0 - 380.0					
W17 Peninsula CH	4,714	387.1	414.0 - 404.4 - 434.5	4,656	402.2	361.1 - 375.5 - 383.7	9,370	404.7	372.0 - 380.0 - 405.1					
W17A Dorset CH	2,401	739.8	430.0 - 374.5 - 408.8	2,324	820.1	371.8 - 368.0 - 448.4	4,725	821.7	430.8 - 408.0 - 413.0					
W18A Devon, Somerset and Wiltshire CH	2,064	551.8	430.4 - 422.4 - 458.8	2,024	522.2	360.0 - 368.0 - 368.1	4,088	542.0	407.2 - 384.4 - 410.0					
W18B Devon-Somerset CH	2,603	521.1	381.8 - 378.0 - 403.7	2,509	563.2	343.0 - 368.0 - 368.0	5,112	541.7	367.8 - 368.0 - 368.0					
W19 Cheshire, Mersey CH	4,817	427.8	404.0 - 388.1 - 411.8	5,051	455.8	370.0 - 350.0 - 373.4	9,868	421.2	361.8 - 370.0 - 369.0					
W20 Central-South-Coast CH	3,347	550.6	424.4 - 411.1 - 431.0	3,212	535.5	370.0 - 360.0 - 360.0	6,559	544.2	360.0 - 360.0 - 407.8					
W21 Surrey, West-Sussex and Hampshire CH	2,468	454.9	362.2 - 340.0 - 380.0	2,497	422.1	330.4 - 330.0 - 342.2	4,965	428.1	372.0 - 326.0 - 345.0					
W22 Sussex CH	2,742	522.7	381.7 - 347.6 - 375.0	2,637	510.8	322.0 - 338.0 - 342.2	5,379	510.5	341.8 - 332.0 - 332.0					
W23 Kent and Medway CH	3,701	471.8	381.8 - 369.0 - 384.4	3,338	484.6	340.7 - 328.2 - 321.2	7,039	480.2	370.0 - 350.0 - 350.0					
W24 South- Midlands CH	4,432	581.2	398.4 - 403.0 - 458.8	4,438	551.2	344.8 - 318.0 - 3	8,870	519.4	370.2 - 350.0 - 350.0					
W25 North- Midlands CH	7,788	501.2	418.0 - 403.0 - 434.0	7,486	514.8	368.0 - 368.0 - 368.0	15,274	458.0	370.0 - 350.0 - 350.0					
W26 Yorkshire CH	7,951	361.8	368.0 - 372.0 - 372.0	7,913	423.2	371.4 - 324.0 - 324.0	12,220	412.4	364.0 - 364.0 - 365.0					
W27 Devon CH	4,982	472.7	372.0 - 355.0 - 355.0	5,072	458.8	374.0 - 360.0 - 360.0	9,054	467.6	372.0 - 355.0 - 355.0					
England	110,820	498.8	437.9 - 486.8 - 493.2	110,340	487.2	382.2 - 380.1 - 384.2	220,875	479.9	380.0 - 370.0 - 370.0					
North of Scotland CH	3,381	501.8	360.2 - 215.0 - 465.1	2,450	514.8	362.0 - 300.0 - 359.7	5,832	510.4	370.8 - 369.1 - 369.5					
North-East of Scotland CH	3,557	522.9	412.4 - 417.0 - 461.0	3,581	519.7	367.2 - 360.0 - 360.0	7,138	520.8	407.0 - 380.0 - 410.0					
West of Scotland CH	0,860	520.1	480.0 - 420.0 - 485.1	0,850	510.8	371.0 - 388.2 - 388.2	1,242	522.7	498.0 - 430.0 - 430.0					
Scotland	52,649	616.1	480.0 - 430.0 - 477.8	15,940	511.6	370.2 - 372.0 - 368.0	36,040	608.3	464.0 - 380.0 - 400.0					
North Wales CH	2,028	508.8	481.2 - 431.0 - 453.8	2,020	588.8	392.0 - 373.0 - 364.0	4,152	570.6	421.2 - 388.0 - 415.1					
W12 South-West Wales CH	2,517	580.2	418.0 - 388.1 - 422.2	2,455	547.4	388.0 - 351.1 - 382.2	4,945	570.1	381.8 - 378.0 - 380.0					
W13 East Wales CH	3,053	576.1	472.4 - 458.0 - 480.0	3,018	485.1	372.0 - 364.0 - 368.0	7,109	534.5	422.4 - 410.0 - 432.0					
W14 South Wales CH	6,165	585.4	440.0 - 460.0 - 480.0	6,167	625.1	371.1 - 364.0 - 368.0	10,997	603.3	450.0 - 420.0 - 420.0					
Northern Ireland	2,477	436.7	382.3 - 370.1 - 406.4	2,487	491.0	357.4 - 324.3 - 346.8	4,964	452.3	364.8 - 364.3 - 373.4					
United Kingdom	144,300	493.6	411.4 - 400.8 - 415.8	144,264	479.9	361.4 - 351.6 - 367.4	288,564	479.2	370.0 - 360.0 - 360.0					

C15: Oesophagus

Males						Females						Persons					
Years of observation	Number in Cohort	Cumulative Deaths	% Crude Survival	% Relative Survival	95% Confidence Interval	Number in Cohort	Cumulative Deaths	% Crude Survival	% Relative Survival	95% Confidence Interval	Number in Cohort	Cumulative Deaths	% Crude Survival	% Relative Survival	95% Confidence Interval		
1970-1979	11,722	6,210	47.8	52.2	46.6 - 58.8	11,722	6,210	47.8	52.2	46.6 - 58.8	19,979	10,722	45.7	54.3	49.5 - 59.9		
1980-1984	13,421	6,145	53.9	57.4	48.6 - 58.2	8,269	3,792	52.5	57.7	50.7 - 58.7	22,603	10,788	52.0	57.9	50.9 - 58.8		
1985-1989	12,779	6,055	52.5	56.5	48.6 - 58.2	8,269	3,792	52.5	57.7	50.7 - 58.7	24,501	10,788	52.0	57.9	50.9 - 58.8		
1990-1994	12,779	6,055	52.5	56.5	48.6 - 58.2	8,269	3,792	52.5	57.7	50.7 - 58.7	24,501	10,788	52.0	57.9	50.9 - 58.8		
2000-2004	17,155	10,059	40.8	51.3	49.2 - 58.7	9,254	4,647	51.6	51.4	52.6 - 58.8	28,979	17,969	34.5	51.4	49.8 - 57.6		

Estimated change per 5-year cohort (N): 4.5 1.7 - 7.2
P value: 0.029

Notes on Trend

Estimated 4.5% change per 5 year cohort gives an estimated increase of 0.80% per annum.

Estimated change per 5-year cohort (N): 2.5 -0.6 - 5.6
P value: 0.073

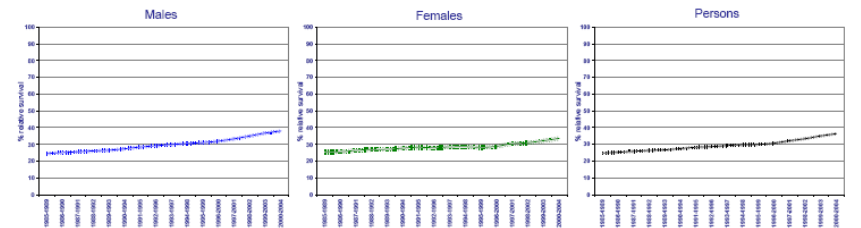
Notes on Trend

The regression test shows no statistically significant linear change in relative survival over all four time periods. However, only the significant differences between time period one and two and three have not been statistically tested.

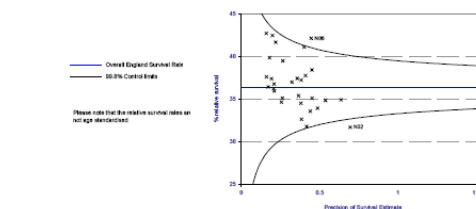
Estimated change per 5-year cohort (N): 3.7 0.8 - 6.6
P value: 0.021

Notes on Trend

Estimated 3.7% change per 5 year cohort gives an estimated increase of 0.74% per annum.



Category	Males					Females					Persons				
	Number	Count	% Crude	% Relative	95% CI	Number	Count	% Crude	% Relative	95% CI	Number	Count	% Crude	% Relative	95% CI
Chronic Diseases															
Asthma and COPD	134	588	30.8	21.8	18.8 - 24.8	225	500	27.8	20.8	18.3 - 23.3	359	608	31.8	20.8	18.3 - 23.8
Heart Disease and Stroke	1,115	3,115	21.8	17.8	15.8 - 19.8	1,025	2,415	20.8	18.8	16.8 - 20.8	2,140	5,530	21.3	18.8	16.8 - 20.8
Hypertension	1,015	2,815	20.8	18.8	16.8 - 20.8	915	2,115	19.8	18.8	16.8 - 20.8	1,930	4,930	19.8	18.8	16.8 - 20.8
Diabetes	415	1,015	10.8	10.8	9.8 - 11.8	315	715	10.8	10.8	9.8 - 11.8	730	1,730	10.8	10.8	9.8 - 11.8
Chronic Kidney Disease	415	1,015	10.8	10.8	9.8 - 11.8	315	715	10.8	10.8	9.8 - 11.8	730	1,730	10.8	10.8	9.8 - 11.8
Chronic Liver Disease	115	265	10.8	10.8	9.8 - 11.8	115	265	10.8	10.8	9.8 - 11.8	230	530	10.8	10.8	9.8 - 11.8
Chronic Lung Disease	115	265	10.8	10.8	9.8 - 11.8	115	265	10.8	10.8	9.8 - 11.8	230	530	10.8	10.8	9.8 - 11.8
Chronic Pain	115	265	10.8	10.8	9.8 - 11.8	115	265	10.8	10.8	9.8 - 11.8	230	530	10.8	10.8	9.8 - 11.8
Chronic Mental Health	115	265	10.8	10.8	9.8 - 11.8	115	265	10.8	10.8	9.8 - 11.8	230	530	10.8	10.8	9.8 - 11.8
Chronic Substance Use	115	265	10.8	10.8	9.8 - 11.8	115	265	10.8	10.8	9.8 - 11.8	230	530	10.8	10.8	9.8 - 11.8
Chronic Infectious Disease	115	265	10.8	10.8	9.8 - 11.8	115	265	10.8	10.8	9.8 - 11.8	230	530	10.8	10.8	9.8 - 11.8
Chronic Autoimmune Disease	115	265	10.8	10.8	9.8 - 11.8	115	265	10.8	10.8	9.8 - 11.8	230	530	10.8	10.8	9.8 - 11.8
Chronic Neurological Disease	115	265	10.8	10.8	9.8 - 11.8	115	265	10.8	10.8	9.8 - 11.8	230	530	10.8	10.8	9.8 - 11.8
Chronic Endocrine Disease	115	265	10.8	10.8	9.8 - 11.8	115	265	10.8	10.8	9.8 - 11.8	230	530	10.8	10.8	9.8 - 11.8
Chronic Reproductive Disease	115	265	10.8	10.8	9.8 - 11.8	115	265	10.8	10.8	9.8 - 11.8	230	530	10.8	10.8	9.8 - 11.8
Chronic Skin Disease	115	265	10.8	10.8	9.8 - 11.8	115	265	10.8	10.8	9.8 - 11.8	230	530	10.8	10.8	9.8 - 11.8
Chronic Eye Disease	115	265	10.8	10.8	9.8 - 11.8	115	265	10.8	10.8	9.8 - 11.8	230	530	10.8	10.8	9.8 - 11.8
Chronic Ear Disease	115	265	10.8	10.8	9.8 - 11.8	115	265	10.8	10.8	9.8 - 11.8	230	530	10.8	10.8	9.8 - 11.8
Chronic Oral Disease	115	265	10.8	10.8	9.8 - 11.8	115	265	10.8	10.8	9.8 - 11.8	230	530	10.8	10.8	9.8 - 11.8
Chronic Dental Disease	115	265	10.8	10.8	9.8 - 11.8	115	265	10.8	10.8	9.8 - 11.8	230	530	10.8	10.8	9.8 - 11.8
Chronic Vision Disease	115	265	10.8	10.8	9.8 - 11.8	115	265	10.8	10.8	9.8 - 11.8	230	530	10.8	10.8	9.8 - 11.8
Chronic Hearing Disease	115	265	10.8	10.8	9.8 - 11.8	115	265	10.8	10.8	9.8 - 11.8	230	530	10.8	10.8	9.8 - 11.8
Chronic Speech Disease	115	265	10.8	10.8	9.8 - 11.8	115	265	10.8	10.8	9.8 - 11.8	230	530	10.8	10.8	9.8 - 11.8
Non-Chronic Diseases															
Cancer	1,115	3,115	21.8	17.8	15.8 - 19.8	1,025	2,415	20.8	18.8	16.8 - 20.8	2,140	5,530	21.3	18.8	16.8 - 20.8
Alcohol Use	115	265	10.8	10.8	9.8 - 11.8	115	265	10.8	10.8	9.8 - 11.8	230	530	10.8	10.8	9.8 - 11.8
Tobacco Use	115	265	10.8	10.8	9.8 - 11.8	115	265	10.8	10.8	9.8 - 11.8	230	530	10.8	10.8	9.8 - 11.8
Obesity	115	265	10.8	10.8	9.8 - 11.8	115	265	10.8	10.8	9.8 - 11.8	230	530	10.8	10.8	9.8 - 11.8
Depression	115	265	10.8	10.8	9.8 - 11.8	115	265	10.8	10.8	9.8 - 11.8	230	530	10.8	10.8	9.8 - 11.8
Anxiety	115	265	10.8	10.8	9.8 - 11.8	115	265	10.8	10.8	9.8 - 11.8	230	530	10.8	10.8	9.8 - 11.8
Bipolar Disorder	115	265	10.8	10.8	9.8 - 11.8	115	265	10.8	10.8	9.8 - 11.8	230	530	10.8	10.8	9.8 - 11.8
Schizophrenia	115	265	10.8	10.8	9.8 - 11.8	115	265	10.8	10.8	9.8 - 11.8	230	530	10.8	10.8	9.8 - 11.8
Personality Disorder	115	265	10.8	10.8	9.8 - 11.8	115	265	10.8	10.8	9.8 - 11.8	230	530	10.8	10.8	9.8 - 11.8
Eating Disorder	115	265	10.8	10.8	9.8 - 11.8	115	265	10.8	10.8	9.8 - 11.8	230	530	10.8	10.8	9.8 - 11.8
Substance Use Disorder	115	265	10.8	10.8	9.8 - 11.8	115	265	10.8	10.8	9.8 - 11.8	230	530	10.8	10.8	9.8 - 11.8
Self-Harm	115	265	10.8	10.8	9.8 - 11.8	115	265	10.8	10.8	9.8 - 11.8	230	530	10.8	10.8	9.8 - 11.8
Suicidal Thoughts	115	265	10.8	10.8	9.8 - 11.8	115	265	10.8	10.8	9.8 - 11.8	230	530	10.8	10.8	9.8 - 11.8
Post-Traumatic Stress Disorder	115	265	10.8	10.8	9.8 - 11.8	115	265	10.8	10.8	9.8 - 11.8	230	530	10.8	10.8	9.8 - 11.8
Acute Stress Disorder	115	265	10.8	10.8	9.8 - 11.8	115	265	10.8	10.8	9.8 - 11.8	230	530	10.8	10.8	9.8 - 11.8
Generalized Anxiety Disorder	115	265	10.8	10.8	9.8 - 11.8	115	265	10.8	10.8	9.8 - 11.8	230	530	10.8	10.8	9.8 - 11.8
Major Depressive Disorder	115	265	10.8	10.8	9.8 - 11.8	115	265	10.8	10.8	9.8 - 11.8	230	530	10.8	10.8	9.8 - 11.8
Bipolar Disorder	115	265	10.8	10.8	9.8 - 11.8	115	265	10.8	10.8	9.8 - 11.8	230	530	10.8	10.8	9.8 - 11.8
Schizophrenia	115	265	10.8	10.8	9.8 - 11.8	115	265	10.8	10.8	9.8 - 11.8	230	530	10.8	10.8	9.8 - 11.8
Personality Disorder	115	265	10.8	10.8	9.8 - 11.8	115	265	10.8	10.8	9.8 - 11.8	230	530	10.8	10.8	9.8 - 11.8
Eating Disorder	115	265	10.8	10.8	9.8 - 11.8	115	265	10.8	10.8	9.8 - 11.8	230	530	10.8	10.8	9.8 - 11.8
Substance Use Disorder	115	265	10.8	10.8	9.8 - 11.8	115	265	10.8	10.8	9.8 - 11.8	230	530	10.8	10.8	9.8 - 11.8
Self-Harm	115	265	10.8	10.8	9.8 - 11.8	115	265	10.8	10.8	9.8 - 11.8	230	530	10.8	10.8	9.8 - 11.8
Suicidal Thoughts	115	265	10.8	10.8	9.8 - 11.8	115	265	10.8	10.8	9.8 - 11.8	230	530	10.8	10.8	9.8 - 11.8
Post-Traumatic Stress Disorder	115	265	10.8	10.8	9.8 - 11.8	115	265	10.8	10.8	9.8 - 11.8	230	530	10.8	10.8	9.8 - 11.8
Acute Stress Disorder	115	265	10.8	10.8	9.8 - 11.8	115	265	10.8	10.8	9.8 - 11.8	230	530	10.8	10.8	9.8 - 11.8
Generalized Anxiety Disorder	115	265	10.8	10.8	9.8 - 11.8	115	265	10.8	10.8	9.8 - 11.8	230	530	10.8	10.8	9.8 - 11.8
Major Depressive Disorder	115	265	10.8	10.8	9.8 - 11.8	115	265	10.8	10.8	9.8 - 11.8	230	530	10.8	10.8	9.8 - 11.8
Bipolar Disorder	115	265	10.8	10.8	9.8 - 11.8	115	265	10.8	10.8	9.8 - 11.8	230	530	10.8	10.8	9.8 - 11.8
Schizophrenia	115	265	10.8	10.8	9.8 - 11.8	115	265	10.8	10.8	9.8 - 11.8	230	530	10.8	10.8	9.8 - 11.8
Personality Disorder	115	265	10.8	10.8	9.8 - 11.8	115	265	10.8	10.8	9.8 - 11.8	230	530	10.8	10.8	9.8 - 11.8
Eating Disorder	115	265	10.8	10.8	9.8 - 11.8	115	265	10.8	10.8	9.8 - 11.8	230	530	10.8	10.8	9.8 - 11.8
Substance Use Disorder	115	265	10.8	10.8	9.8 - 11.8	115	265	10.8	10.8	9.8 - 11.8	230	530	10.8	10.8	9.8 - 11.8
Self-Harm	115	265	10.8	10.8	9.8 - 11.8	115	265	10.8	10.8	9.8 - 11.8	230	530	10.8	10.8	9.8 - 11.8
Suicidal Thoughts	115	265	10.8	10.8	9.8 - 11.8	115	265	10.8	10.8	9.8 - 11.8	230	530	10.8	10.8	9.8 - 11.8
Post-Traumatic Stress Disorder	115	265	10.8	10.8	9.8 - 11.8	115	265	10.8	10.8	9.8 - 11.8	230	530	10.8	10.8	9.8 - 11.8
Acute Stress Disorder	115	265	10.8	10.8	9.8 - 11.8	115	265	10.8	10.8	9.8 - 11.8	230	530	10.8	10.8	9.8 - 11.8
Generalized Anxiety Disorder	115	265	10.8	10.8	9.8 - 11.8	115	265	10.8	10.8	9.8 - 11.8	230	530	10.8	10.8	9.8 - 11.8
Major Depressive Disorder	115	265	10.8	10.8	9.8 - 11.8	115	265	10.8	10.8	9.8 - 11.8	230	530	10.8	10.8	9.8 - 11.8
Bipolar Disorder	115	265	10.8	10.8	9.8 - 11.8	115	265	10.8	10.8	9.8 - 11.8	230	530	10.8	10.8	9.8 - 11.8
Schizophrenia	115	265	10.8	10.8	9.8 - 11.8	115	265	10.8	10.8	9.8 - 11.8	230	530	10.8	10.8	9.8 - 11.8
Personality Disorder	115	265	10.8	10.8	9.8 - 11.8	115	265	10.8	10.8	9.8 - 11.8	230	530	10.8	10.8	9.8 - 11.8
Eating Disorder	115	265	10.8	10.8	9.8 - 11.8	115	265	10.8	10.8	9.8 - 11.8	230	530	10.8	10.8	9.8 - 11.8
Substance Use Disorder	115	265	10.8	10.8	9.8 - 11.8	115	265	10.8	10.8	9.8 - 11.8	230	530	10.8	10.8	9.8 - 11.8
Self-Harm	115	265	10.8	10.8	9.8 - 11.8	115	265	10.8	10.8	9.8 - 11.8	230	530	10.8	10.8	9.8 - 11.8
Suicidal Thoughts	115	265	10.8	10.8	9.8 - 11.8	115	265	10.8	10.8	9.8 - 11.8	230	530	10.8	10.8	9.8 - 11.8
Post-Traumatic Stress Disorder	115	265	10.8	10.8	9.8 - 11.8	115	265	10.8	10.8	9.8 - 11.8	230	530	10.8	10.8	9.8 - 11.8
Acute Stress Disorder	115	265	10.8	10.8	9.8 - 11.8	115	265	10.8	10.8	9.8 - 11.8	230	530	10.8	10.8	9.8 - 11.8
Generalized Anxiety Disorder	115	265	10.8	10.8	9.8 - 11.8	115	265	10.8	10.8	9.8 - 11.8	230	530	10.8	10.8	9.8 - 11.8
Major Depressive Disorder	115	265	10.8	10.8	9.8 - 11.8	115	265	10.8	10.8	9.8 - 11.8	230	530	10.8	10.8	9.8 - 11.8
Bipolar Disorder	115	265	10.8	10.8	9.8 - 11.8	115	265	10.8	10.8	9.8 - 11.8	230	530	10.8	10.8	9.8 - 11.8
Schizophrenia	115	265	10.8	10.8	9.8 - 11.8	115	265	10.8	10.8	9.8 - 11.8	230	530	10.8	10.8	9.8 - 11.8
Personality Disorder	115	265	10.8	10.8	9.8 - 11.8	115	265	10.8	10.8	9.8 - 11.8	230</				



Networks above 99.8% control limit:
N06 Yorkshire

Trends in 1 year survival: England 1985-2004

C00-C97 excl. C44: All malignant neoplasms (excl. non-melanoma skin cancer)

Males

Years of diagnosis	Number in Cohort	Cumulative Deaths	% Crude Survival	% Relative Survival	95% Confidence Interval
1985-1989	414,345	221,027	46.7	49.3	49.1 - 49.5
1990-1994	445,012	219,778	50.6	53.6	53.4 - 53.7
1995-1999	468,127	206,001	56.0	58.9	58.7 - 59.0
2000-2004	504,166	196,766	61.0	64.1	63.9 - 64.2

Estimated change per 5-yr cohort (%):	5.0	4.3 - 5.7
P value:	0.001	

Notes on Trend

Estimated 5.0% change per 5 year cohort gives an estimated increase of 1% per annum.

Females

Years of diagnosis	Number in Cohort	Cumulative Deaths	% Crude Survival	% Relative Survival	95% Confidence Interval
1985-1989	423,315	172,317	59.3	61.4	61.3 - 61.6
1990-1994	453,522	172,691	61.9	64.2	64.0 - 64.3
1995-1999	475,530	168,215	64.6	67.0	66.8 - 67.1
2000-2004	498,802	164,881	66.9	69.4	69.3 - 69.5

Estimated change per 5-yr cohort (%):	2.7	2.4 - 2.9
P value:	<0.001	

Notes on Trend

Estimated 2.7% change per 5 year cohort gives an estimated increase of 0.53% per annum.

Persons

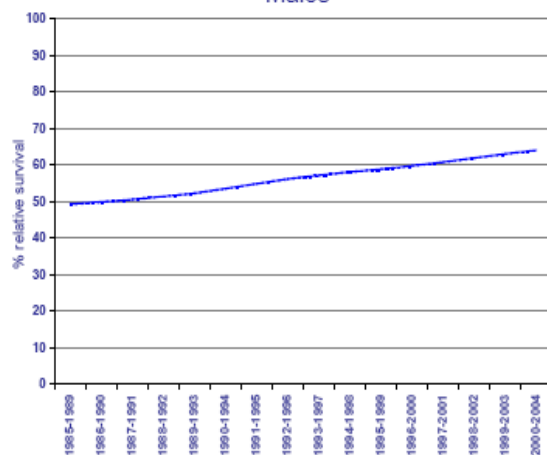
Years of diagnosis	Number in Cohort	Cumulative Deaths	% Crude Survival	% Relative Survival	95% Confidence Interval
1985-1989	837,660	393,344	53.0	55.5	55.4 - 55.6
1990-1994	898,534	392,469	56.3	59.0	58.9 - 59.1
1995-1999	943,657	374,216	60.3	63.0	62.9 - 63.1
2000-2004	1,002,968	361,647	63.9	66.7	66.6 - 66.8

Estimated change per 5-yr cohort (%):	3.8	3.5 - 4.1
P value:	<0.001	

Notes on Trend

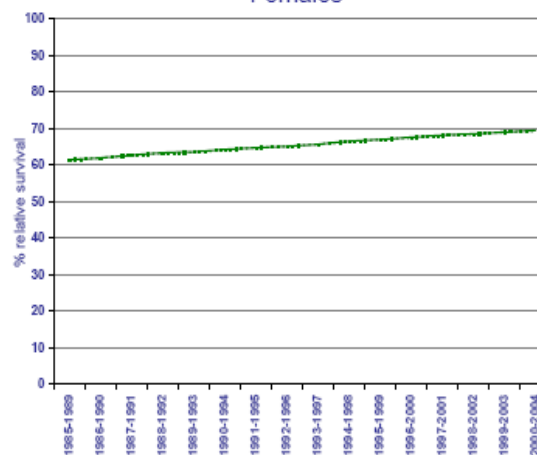
Estimated 3.8% change per 5 year cohort gives an estimated increase of 0.76% per annum.

Males



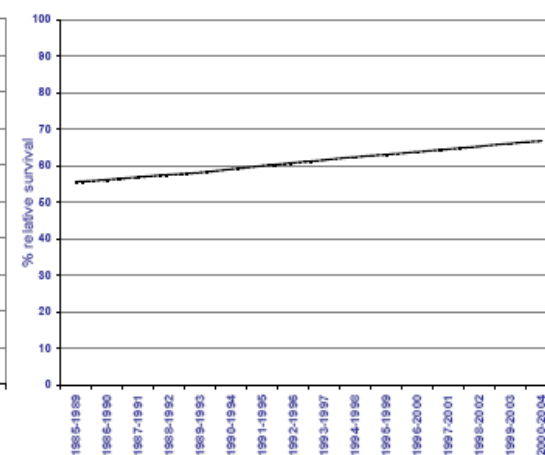
Rolling 5 year cohorts

Females



Rolling 5 year cohorts

Persons

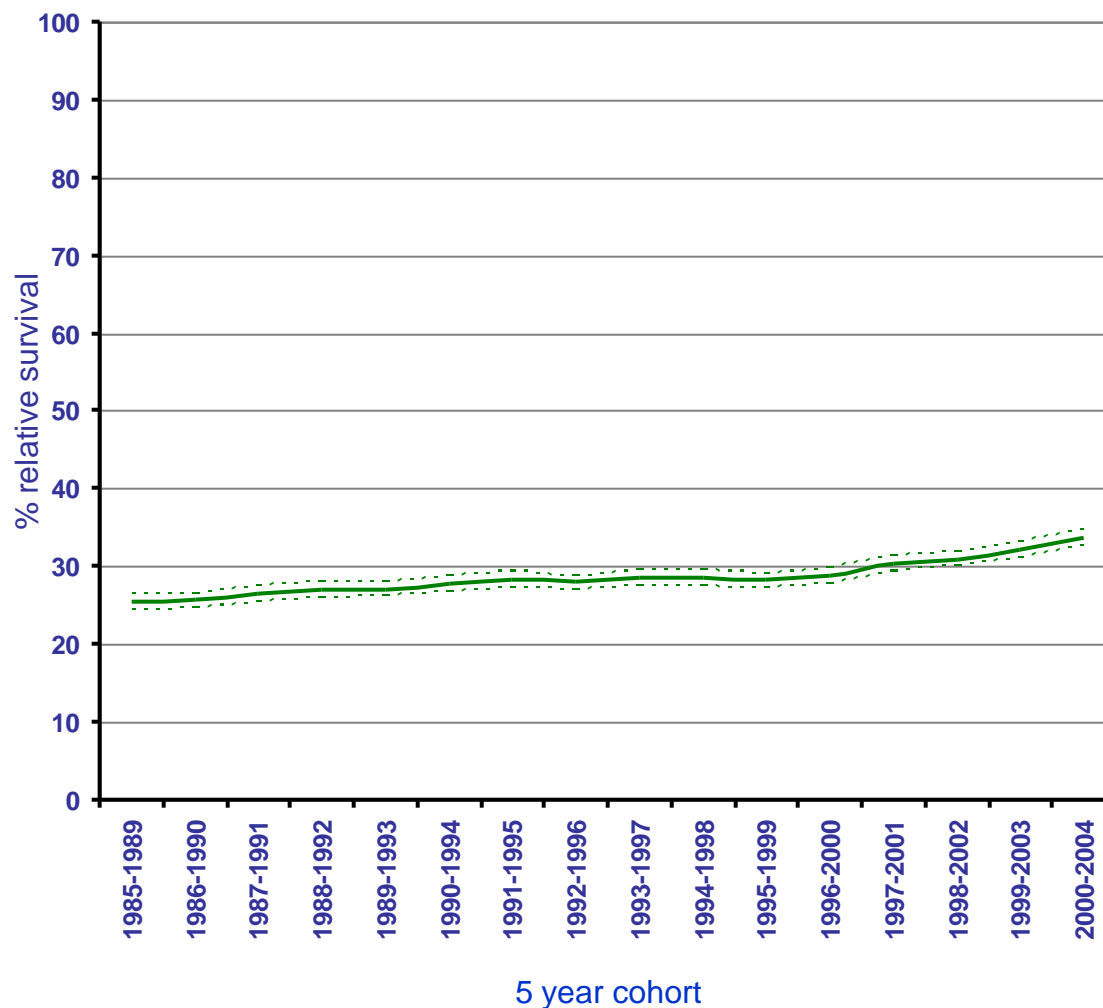


Rolling 5 year cohorts

--- Dotted lines show 95% confidence limits

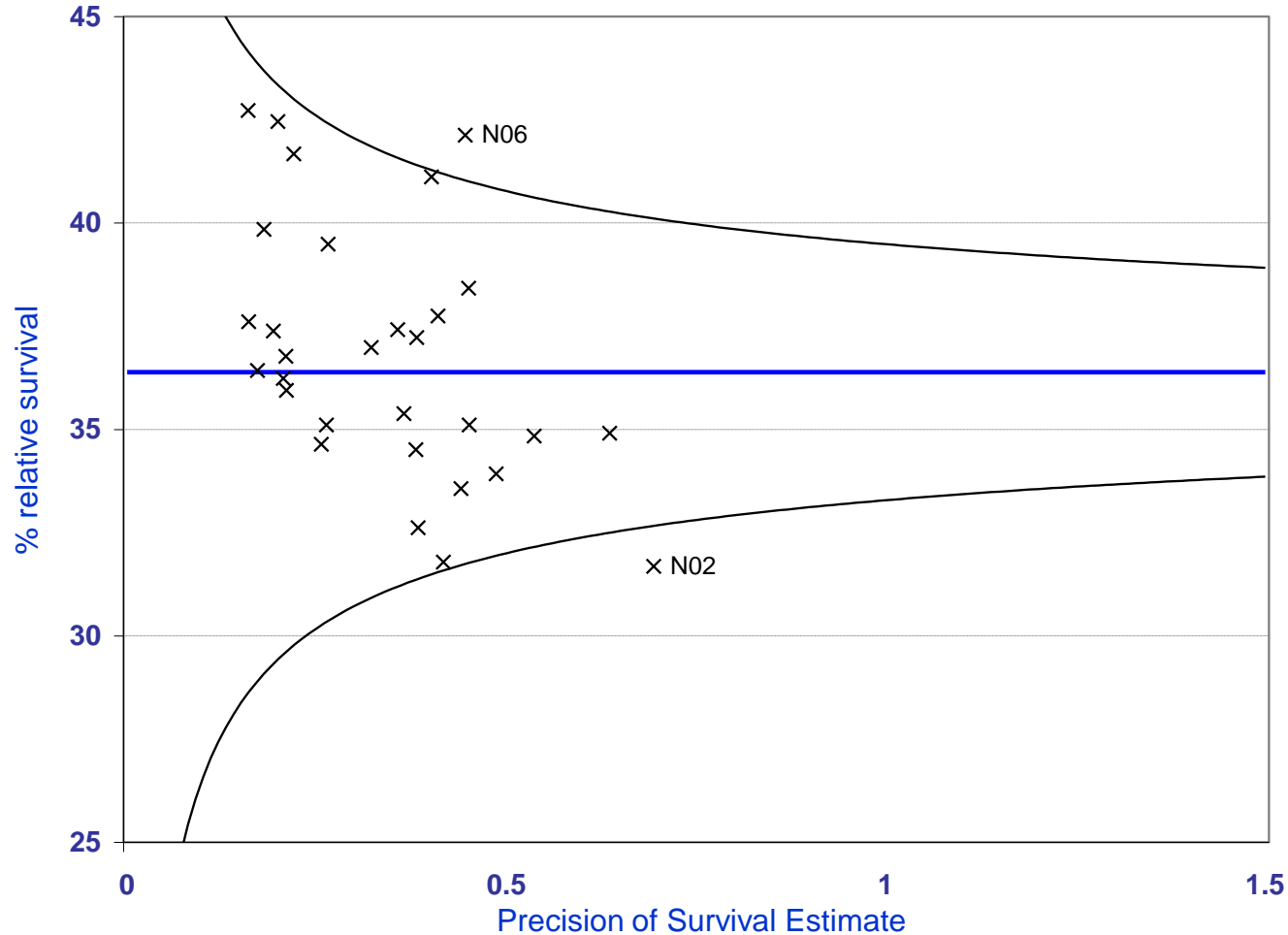
C15: Oesophagus

Trends in 1yr survival



5 year cohort

C15: Oesophagus 2005 by Cancer Network



Lung Cancer Incidence by deprivation

Cancer incidence by deprivation quintile, England, 1995 - 2004

C33-C34: Trachea, bronchus and lung

Males

Deprivation Quintile	Number of cases	Crude Rate	ASR	95% Confidence Interval	ASR Ratio	Excess Cases
1995-1999						
Least deprived	12,764	54.9	47.1	46.3 - 47.9	1.0	0
2	17,063	72.6	58.7	57.8 - 59.5	1.2	3,355
3	20,225	86.8	70.1	69.1 - 71.0	1.5	6,623
4	23,793	98.8	87.7	86.6 - 88.8	1.9	11,005
Most deprived	27,443	112.7	110.9	109.6 - 112.2	2.4	15,788
Overall	101,308	85.4	74.1	73.6 - 74.5		
2000-2004						
Least deprived	12,544	51.2	41.3	40.6 - 42.1	1.0	0
2	15,920	65.4	49.6	48.8 - 50.4	1.2	2,647
3	18,525	76.3	59.7	58.8 - 60.5	1.4	5,693
4	21,525	88.3	76.3	75.3 - 77.3	1.8	9,866
Most deprived	24,361	99.2	100.6	99.4 - 101.9	2.4	14,345
Overall	92,865	76.3	63.7	63.3 - 64.1		

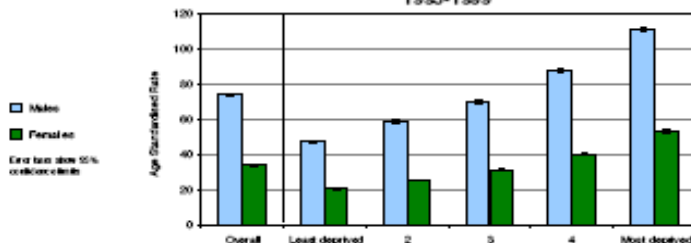
Females

Number of cases	Crude Rate	ASR	95% Confidence Interval	ASR Ratio	Excess Cases
1995-1999					
7,175	29.5	20.8	20.4 - 21.3	1.0	0
9,397	38.1	26.3	24.8 - 26.9	1.2	1,670
11,578	46.5	31.0	30.4 - 31.5	1.5	3,786
14,122	55.9	40.1	39.5 - 40.8	1.9	6,786
16,733	65.2	58.1	57.3 - 58.9	2.5	10,165
59,005	47.3	33.8	33.5 - 34.0		
2000-2004					
7,691	30.7	20.9	20.5 - 21.4	1.0	0
10,290	40.8	26.0	25.5 - 26.5	1.2	2,003
12,140	47.8	31.1	30.5 - 31.7	1.5	3,972
14,719	57.6	40.7	40.0 - 41.3	1.9	7,143
17,024	66.4	55.9	55.0 - 56.7	2.7	10,647
61,894	46.8	34.0	33.9 - 34.3		

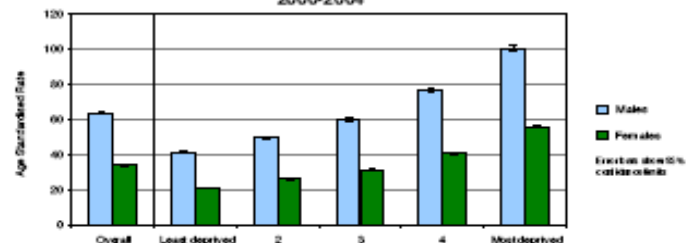
Persons

Number of cases	Crude Rate	ASR	95% Confidence Interval	ASR Ratio	Excess Cases
1995-1999					
19,959	41.9	32.0	31.5 - 32.4	1.0	0
26,450	54.9	39.6	38.1 - 40.0	1.2	5,025
31,803	66.6	47.5	47.0 - 48.0	1.5	10,409
37,915	77.2	60.1	59.5 - 60.7	1.9	17,750
44,176	88.3	77.8	77.1 - 78.6	2.4	25,951
160,313	65.9	50.9	50.7 - 51.2		
2000-2004					
20,295	40.9	29.8	29.4 - 30.3	1.0	0
26,210	52.9	36.3	35.8 - 36.7	1.2	4,650
30,065	61.7	43.3	42.9 - 43.8	1.5	9,065
36,244	72.6	55.8	55.3 - 56.4	1.9	17,008
41,375	82.5	75.2	74.5 - 75.9	2.5	24,993
154,729	62.2	46.9	46.6 - 47.1		

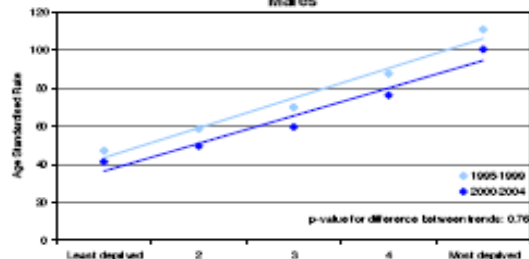
1995-1999



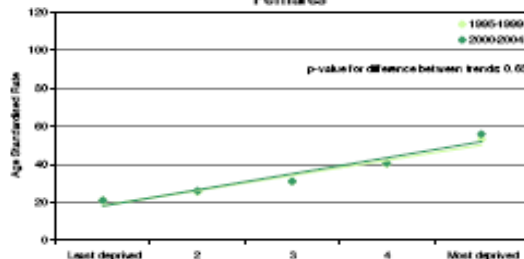
2000-2004



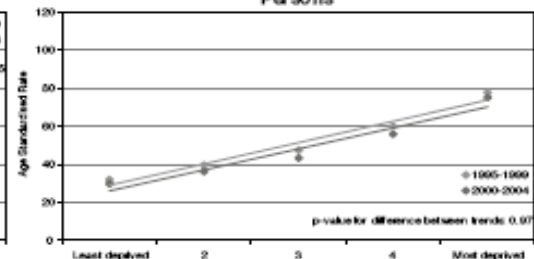
Males



Females



Persons



Cohort	Est. Deprivation Gap (Difference in ASR)	95% Confidence Interval	Modelled % Change for Trend	P-value for Trend
1995-1999	65.5	49.0 - 86.1	15.0%	0.002
2000-2004	62.4	37.5 - 87.4	18.2%	0.004

Cohort	Est. Deprivation Gap (Difference in ASR)	95% Confidence Interval	Modelled % Change for Trend	P-value for Trend
1995-1999	33.8	20.7 - 49.9	19.6%	0.004
2000-2004	36.8	20.3 - 53.3	22.2%	0.008

Cohort	Est. Deprivation Gap (Difference in ASR)	95% Confidence Interval	Modelled % Change for Trend	P-value for Trend
1995-1999	47.4	31.1 - 63.7	17.1%	0.003
2000-2004	47.7	27.2 - 68.3	19.6%	0.005

Expert analyses

- Cancer eAtlas: - launched July 2008
www.ncin.org.uk/eatlas
 - Large and varied interest
 - International recognition
- Reports on:
 - UK incidence & mortality
 - One year survival
 - Deprivation
 - Prevalence
 - Ethnicity
 - Male cancers
 - Cancer in the Elderly
- Microsites

Detailed “Microsites”

Back

1 of 1 100% Find | Next Select a format Export

Major LGIT Surgical Procedures: Any Diagnosis Procedures by Network of Trust and Consultant (Provider Based Analysis)

HES Cancer Data Extract 9 (1997/08 - 2006/07)

		1997-1998	1998-1999	1999-2000	2000-2001	2001-2002	2002-2003	2003-2004	2004-2005	2005-2006	2006-2007	Grand Total
East Kent Hospitals NHS Trust	Colectomy	162	178	163	174	158	144	145	148	142	139	1,553
	Excision of Rectum	98	137	106	117	84	136	121	142	123	146	1,210
	Trust Total	260	315	269	291	242	280	266	290	265	285	2,763
Maidstone and Tunbridge Wells NHS Trust	Colectomy	83	101	100	98	89	99	96	79	107	111	963
	Excision of Rectum	59	99	71	77	63	72	72	72	72	86	743
	Trust Total	142	200	171	175	152	171	168	151	179	197	1,706
Medway NHS Foundation Trust	Colectomy	49	63	50	71	63	66	74	67	59	48	610
	Excision of Rectum	49	48	49	39	49	52	49	60	63	63	521
	Trust Total	98	111	99	110	112	118	123	127	122	111	1,131
Dartford and Gravesham NHS Trust	Colectomy	33	42	42	49	47	43	52	46	47	48	449
	Excision of Rectum	37	16	24	37	36	27	35	38	41	49	340
	Trust Total	70	58	66	86	83	70	87	84	88	97	789
Grand Total		570	684	605	662	589	639	644	652	654	690	6,389

..with detailed “drill through”

Back

Major LGIT Surgical Procedures: Any Diagnosis Procedures by Network of Trust and Consultant (Provider Based Analysis)

HES Cancer Data Extract 9 (1997/08 - 2006/07)

			1997-1998	1998-1999	1999-2000	2000-2001	2001-2002	2002-2003	2003-2004	2004-2005	2005-2006	2006-2007	Grand Total
East Kent Hospitals NHS Trust	Colectomy		162	178	163	174	158	144	145	148	142	139	1,553
	Excision of Rectum		98	137	106	117	84	136	121	142	123	146	1,210
	Trust Total		260	315	269	291	242	280	266	290	265	285	2,763
Maidstone and Tunbridge Wells NHS Trust	Colectomy	C14.0	37	28	37	30	34	32	40	33	57	50	378
		C14.1	10	23	15	23	22	19	14	11	20	22	179
		C14.2	10	8	10	17	10	18	21	8	15	9	126
		C14.3	12	13	13	7	4	7	5	3	2		66
		C14.4	8	13	8	5	7	9	3	8	2		63
		C14.5	4	11	9	3	6	4	5	4	3	3	52
		C14.6		3	7	10	2	2	2		2		28
		C14.7					3	7	4	8	3		25
		C14.8										21	21
		C14.9	2	2	1	3	1	1	2	4		1	17
		C14.10									3	2	5
		C14.11										1	1
		C14.12										1	1
		C14.13										1	1
		C14.14										1	1
	Excision of Rectum		59	99	71	77	63	72	72	72	72	86	743
	Trust Total		142	200	171	175	152	171	168	151	179	197	1,706
Medway NHS Foundation Trust	Colectomy		49	63	50	71	63	66	74	67	59	48	610
	Excision of Rectum		49	48	49	39	49	52	49	60	63	63	521
	Trust Total		98	111	99	110	112	118	123	127	122	111	1,131

June 2010

- Progress on Cancer Mortality Targets
- England by SHA, cancer network and PCT
Mortality rates and trends
 - Analysis carried out by South West Public Health Observatory
 - Trends and rates by cancer network, PCT's and SHA's across England and whether they are on course to reduce mortality from cancer to the required levels.

Mid 2010

- Routes to Diagnosis
- Complex analysis led by Lucy Elliss-Brookes with SWPHO and NatCanSat utilising combined data from multiple sources, to track routes to diagnosis for cancer patients

Routes to Diagnosis	GP/OP referral	Two Week Wait	Emergency presentation	Other outpatient	Screen detected	Inpatient elective	DCO	Unknown	Total	Number of patients
Acute leukaemia	17%	3%	61%	12%	0%	4%	0%	4%	100%	380
Bladder	22%	36%	18%	13%	0%	6%	1%	5%	100%	1,167
Brain & CNS	18%	2%	49%	20%	0%	5%	0%	5%	100%	740
Breast	8%	40%	5%	5%	28%	2%	0%	13%	100%	5,646
Cervix	21%	17%	12%	8%	23%	3%	1%	15%	100%	308
Chronic leukaemia	26%	6%	45%	13%	0%	4%	1%	4%	100%	629
Colorectal	19%	29%	24%	12%	0%	8%	0%	7%	100%	4,515
Kidney	22%	26%	23%	16%	0%	5%	0%	8%	100%	928
Larynx	35%	34%	8%	14%	0%	5%	0%	3%	100%	216
Lung	15%	26%	38%	10%	0%	4%	1%	7%	100%	3,893
Melanoma	23%	39%	4%	8%	0%	5%	0%	22%	100%	1,686
Multiple myeloma	20%	14%	44%	13%	0%	4%	1%	5%	100%	606
Non-Hodgkin's lymphoma	25%	22%	25%	13%	0%	6%	1%	9%	100%	1,349
Oesophagus	15%	32%	21%	14%	0%	13%	0%	4%	100%	912
Oral	32%	27%	5%	14%	0%	4%	1%	17%	100%	458
Ovary	20%	29%	28%	11%	0%	3%	1%	8%	100%	853
Pancreas	13%	20%	45%	10%	0%	5%	1%	7%	100%	917
Prostate	26%	28%	11%	11%	0%	7%	0%	16%	100%	4,865
Stomach	14%	24%	31%	13%	0%	11%	1%	6%	100%	801
tbc (other)	21%	18%	34%	12%	0%	4%	1%	9%	100%	4,323
Testis	14%	47%	9%	15%	0%	4%	0%	11%	100%	259
Uterus	28%	36%	8%	12%	0%	5%	0%	12%	100%	918
Total	19%	28%	22%	11%	5%	5%	1%	10%	100%	36,369

All cancer Routes to Diagnosis: by cancer type

All malignant registrations
South West 2007
excluding C44 and multiples

Relative one year survival: by cancer type

Malignant registrations, South West 2007, excluding multiples and DCOs

Cancer type	GP/OP referral (+TWW)		Emergency		Other route		EUROCARE
	Relative Survival	95% CIs	Relative Survival	95% CIs	Relative Survival	95% CIs	Relative Survival
Acute leukaemia	39.7	(28.1 - 51)	39.4	(32.9 - 45.8)	40.4	(29 - 51.5)	
Bladder	78.3	(74.6 - 81.5)	34.0	(27.3 - 40.8)	79.2	(73.2 - 84)	85.3
Brain & CNS	68.4	(60.1 - 75.4)	34.0	(29.1 - 38.9)	60.6	(53.6 - 66.8)	39.1
Breast	97.7	(96.8 - 98.4)	50.8	(44.4 - 56.9)	98.2	(97.5 - 98.8)	95
Colorectal	84.5	(82.7 - 86.2)	48.4	(45.2 - 51.5)	79.5	(76.9 - 81.9)	74.7
Kidney	81.1	(76.8 - 84.7)	24.0	(18.4 - 30)	72.4	(66.1 - 77.7)	74.7
Lung	39.8	(37.4 - 42.3)	8.9	7.6 - 10.3)	32.4	(29.1 - 35.7)	36.1
Multiple myeloma	83.6	(76.8 - 88.5)	53.1	(46.5 - 59.2)	73.0	(63.7 - 80.3)	70.5
Non-Hodgkin's lymphoma	86.6	(83.2 - 89.3)	43.7	(38.1 - 49.1)	80.9	(76 - 84.9)	73.1
Oesophagus	43.8	(38.9 - 48.6)	22.4	(16.7 - 28.7)	45.5	(39.5 - 51.4)	36.3
Other	81.1	(79.8 - 82.4)	27.2	(25.2 - 29.2)	77.8	(76.1 - 79.5)	
Ovary	83.4	(79.1 - 86.9)	38.8	(32.4 - 45.1)	72.1	(64.7 - 78.3)	70.7
Pancreas	21.0	(16.6 - 25.9)	6.0	(4.1 - 8.6)	22.3	(16.8 - 28.4)	19.2
Prostate	98.0	(97 - 98.7)	48.2	(43.6 - 52.7)	98.3	(96.9 - 99.1)	92.2
Stomach	49.1	(43.1 - 54.8)	17.7	(13.3 - 22.8)	47.6	(41 - 54)	44.1

Mid - late 2010

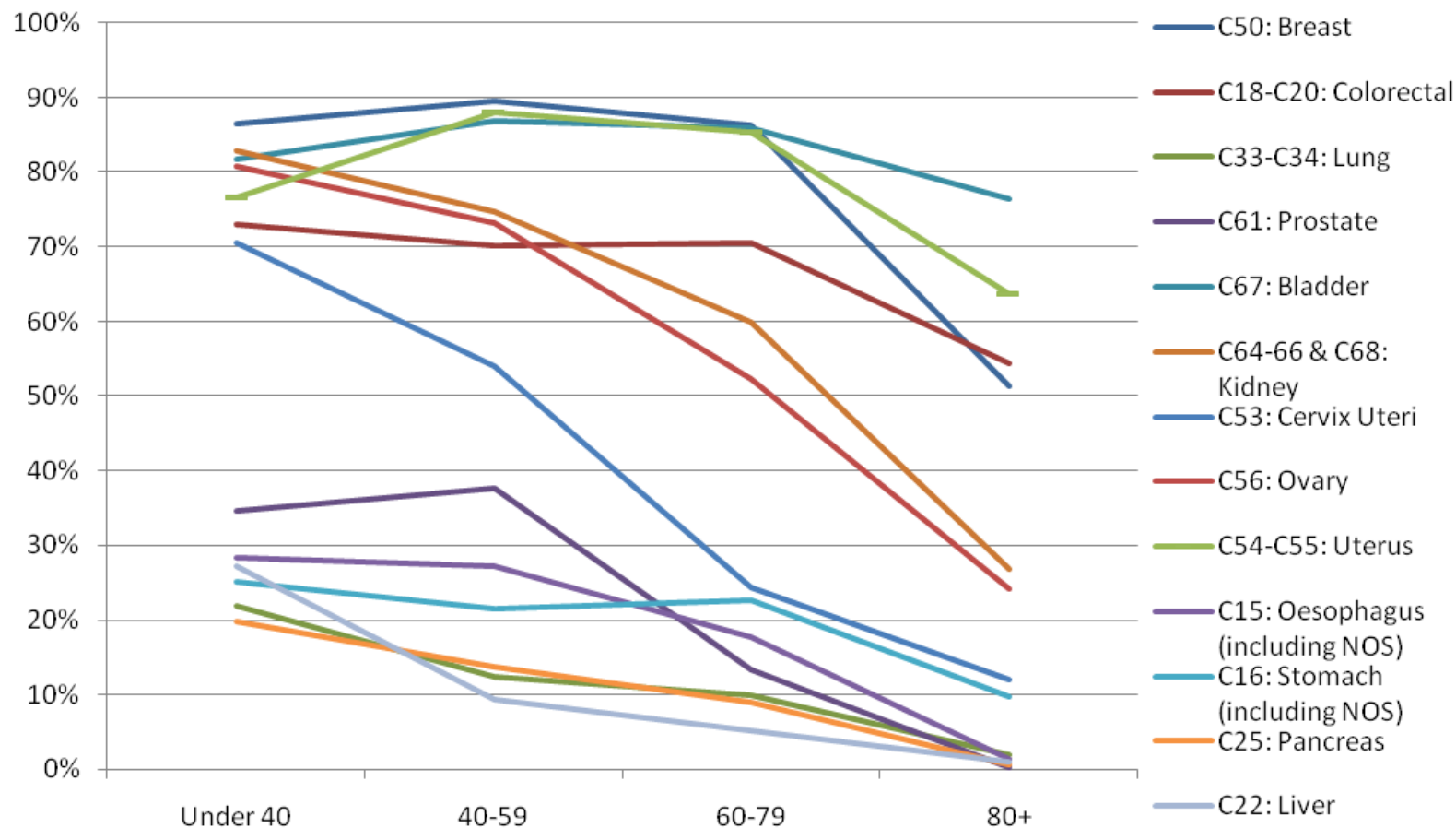
- Joint Cancer Research UK and NCIN CancerStats report on cancer by ethnic group
- Joint Cancer Research UK, NWCIS, NCIN CancerStats Report on cancer in teenagers and young adults
- Major surgery rates

Major surgery - by age*

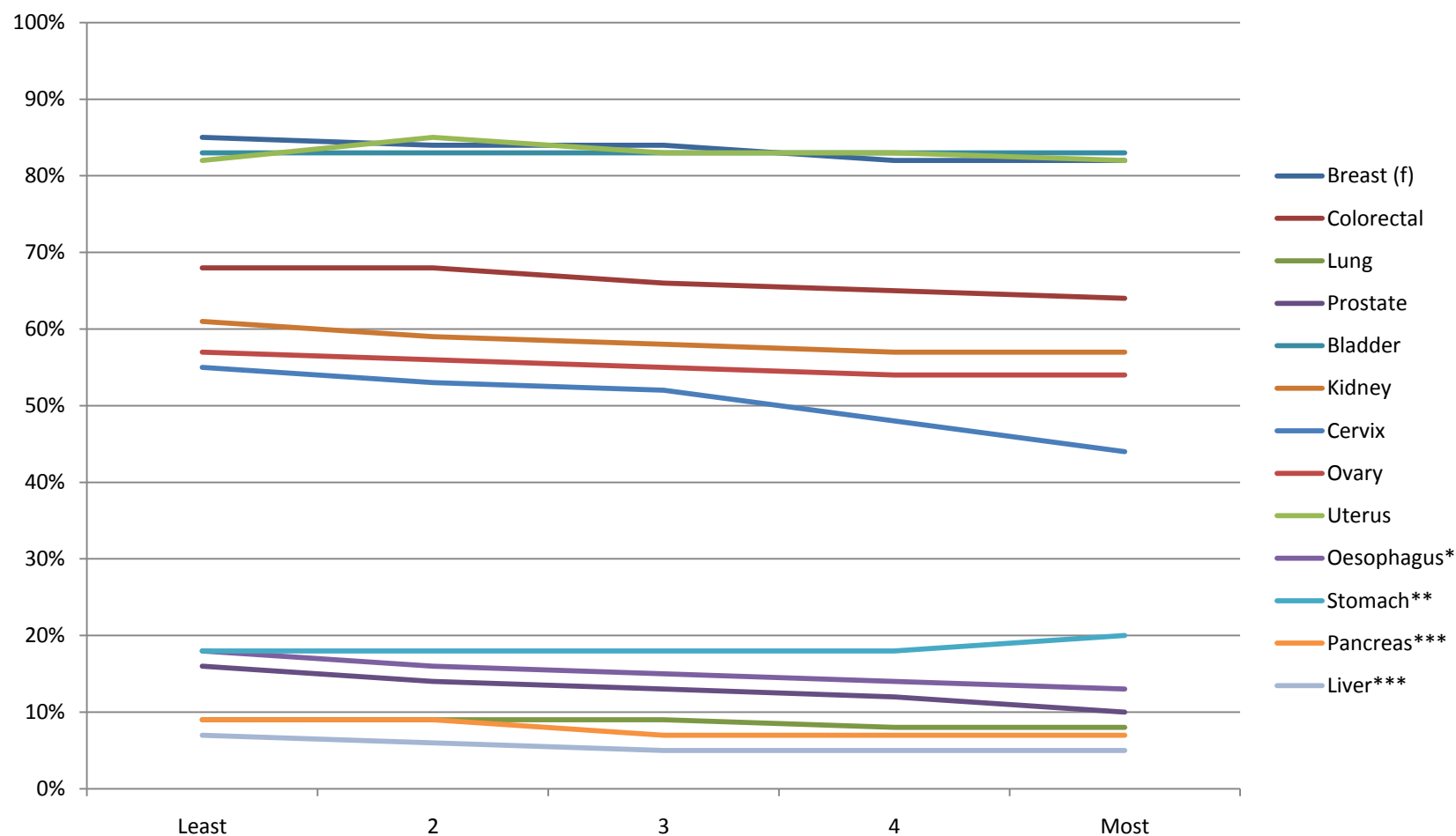
	All ages	Under 40	40-59	60-79	80+
Breast (f)	83%	87%	90%	86%	51%
Colorectal	66%	73%	70%	70%	54%
Lung	9%	22%	12%	10%	2%
Prostate	13%	35%	38%	13%	0%
Bladder	83%	82%	87%	86%	76%
Kidney	58%	83%	75	60%	27%

*Provisional data

By age



Deprivation quintile



Scientific Advisory Group



- Agree analytical methodologies – including the identification of outliers
- To review the ‘scientific’ content of NCIN reports
- To advise on the commissioning of methodological research
- To advise on Peer Review of analytical and research proposals put to the NCIN
- To liaise with the UKACR and other analytical bodies to, common approaches to the analysis and reporting of results

Clinical Outcomes Group:

Main purposes



- To provide a strategic link between the NCIN & the National Cancer Action Team
- To oversee & support the **development of Peer Review**
- To link between those producing data and those responsible for improving the quality of care
- To identify what data is required to support the strategic development of cancer services
- To support 'intelligent commissioning'
- To promote the use of outcome data in service improvement
- To support the implementation of NICE guidance
- To support the development of care pathways

Using information to improve quality & choice

Clinical Outcomes Group: Members



- NCIN
- National Cancer Action Team
- Peer Review Team
- DH Cancer Policy Team
- DH Quality Team
- SHA rep
- Specialist commissioner
- Network Director
- NHS Improvement
- NHS Information Centre
- NICE
- CQC

Using information to improve quality & choice

Research potential

- Analysis of Data Repository (∞)
 - Hospital 'footprint'
 - Primary care data
- Follow up of longer term outcomes of patients in clinical trials:
 - OP visits/primary care data
 - Recurrence
 - Late effects
 - Survival
- Planning of clinical trials
- Biosample annotation
- Development of PROMS.....

NCIN

national cancer
intelligence network



Using information to improve quality & choice

www.ncin.org.uk

Drivers for change

- Cancer Peer Review (*'Clinical Lines of Enquiry'*)
- CQC 'Annual Health Check'
- Peer pressure
- Voluntary sector pressure
- Cancer Reform Strategy
- DH 'Quality agenda' (*Quality Accounts*)
- Commissioning
- National Guidelines
- Patient choice

Drivers for change

- Cancer Peer Review
- CQC 'Annual Health Check'
- Peer pressure
- Voluntary sector pressure
- Cancer Reform Strategy
- DH 'Quality agenda'
- Commissioning
- National Guidelines
- Patient choice

+ Data

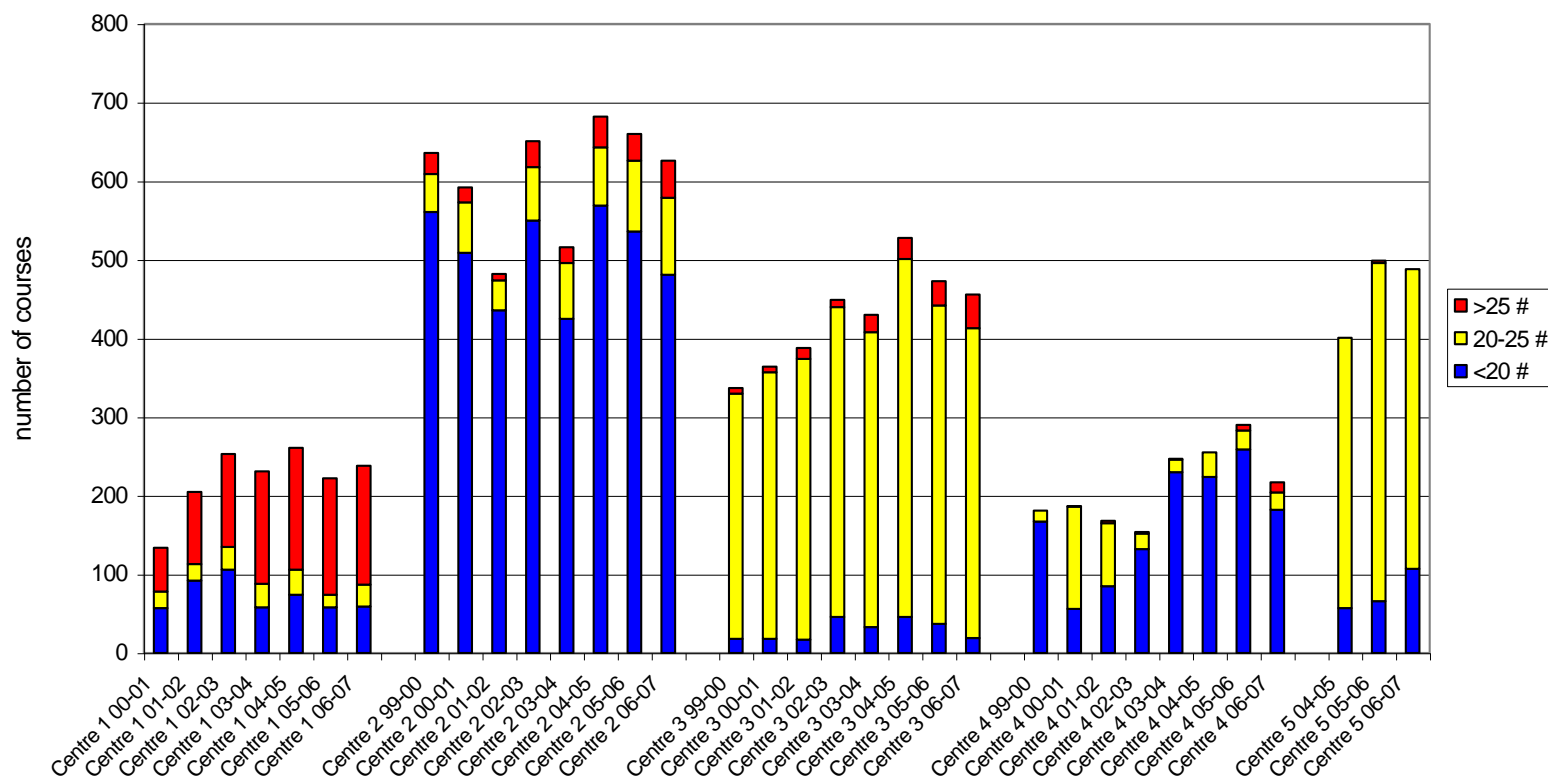
**Clinical
Outcomes Group**

Main issues for SSCRGs

- Development of a work programme (linked to national priorities)
- Support for data set development
- Identification of main clinical indicators
- Supporting the development of Peer Review measures
- Advising on co-morbidity/radiology etc.
- Improving staging (engaging pathologists)
- Promoting clinical (and public) engagement
- Advising on reporting
- Making the most of links with the research community
- Supporting the use of data to change clinical practice
- Advising on care pathways (Map of Medicine)

Links with treatment data

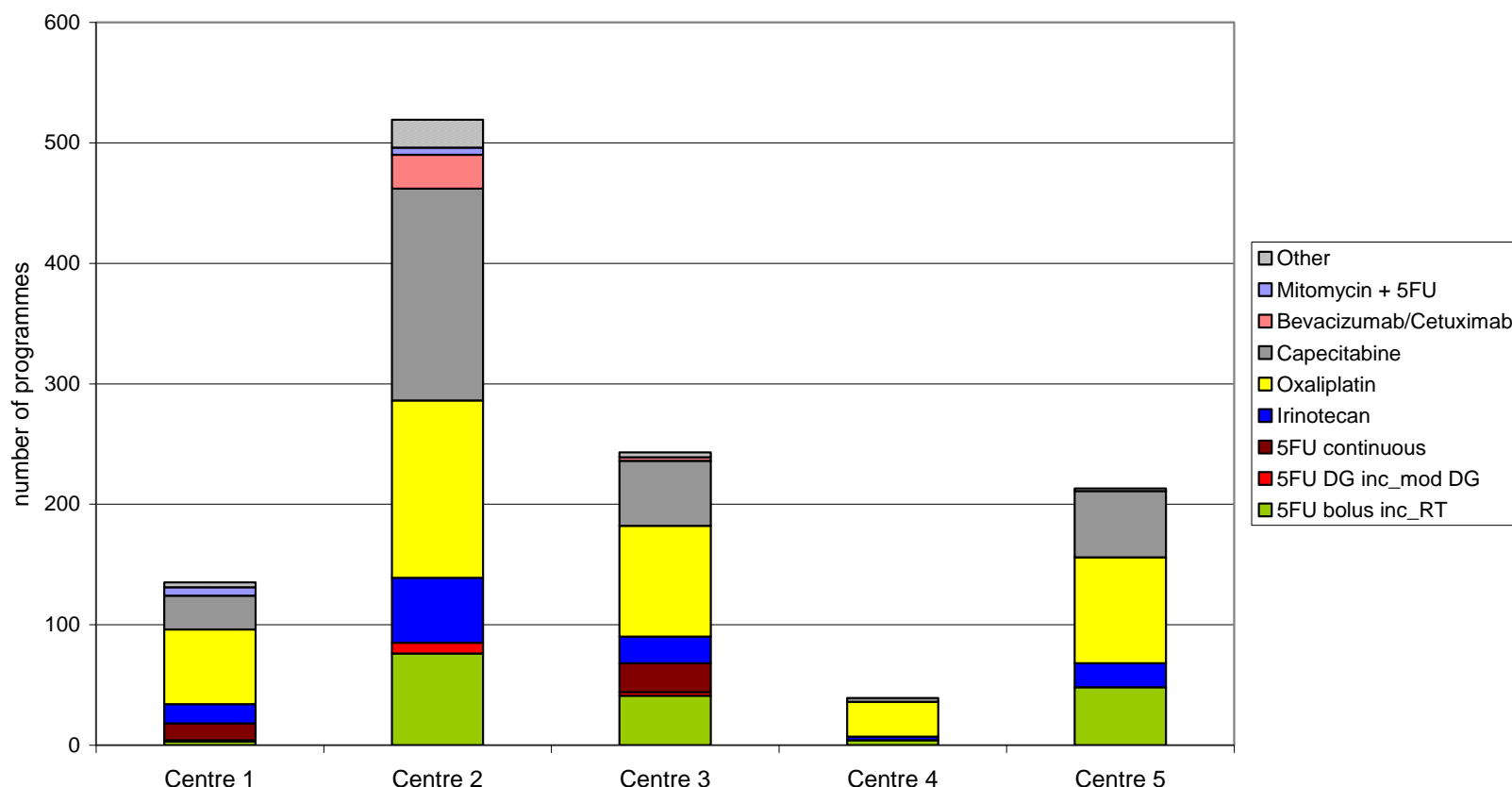
Trends in breast cancer radical radiotherapy
(courses divided into fraction groups)



Source: Monica Roche: Oxford Cancer Intelligence Unit

Links with treatment data

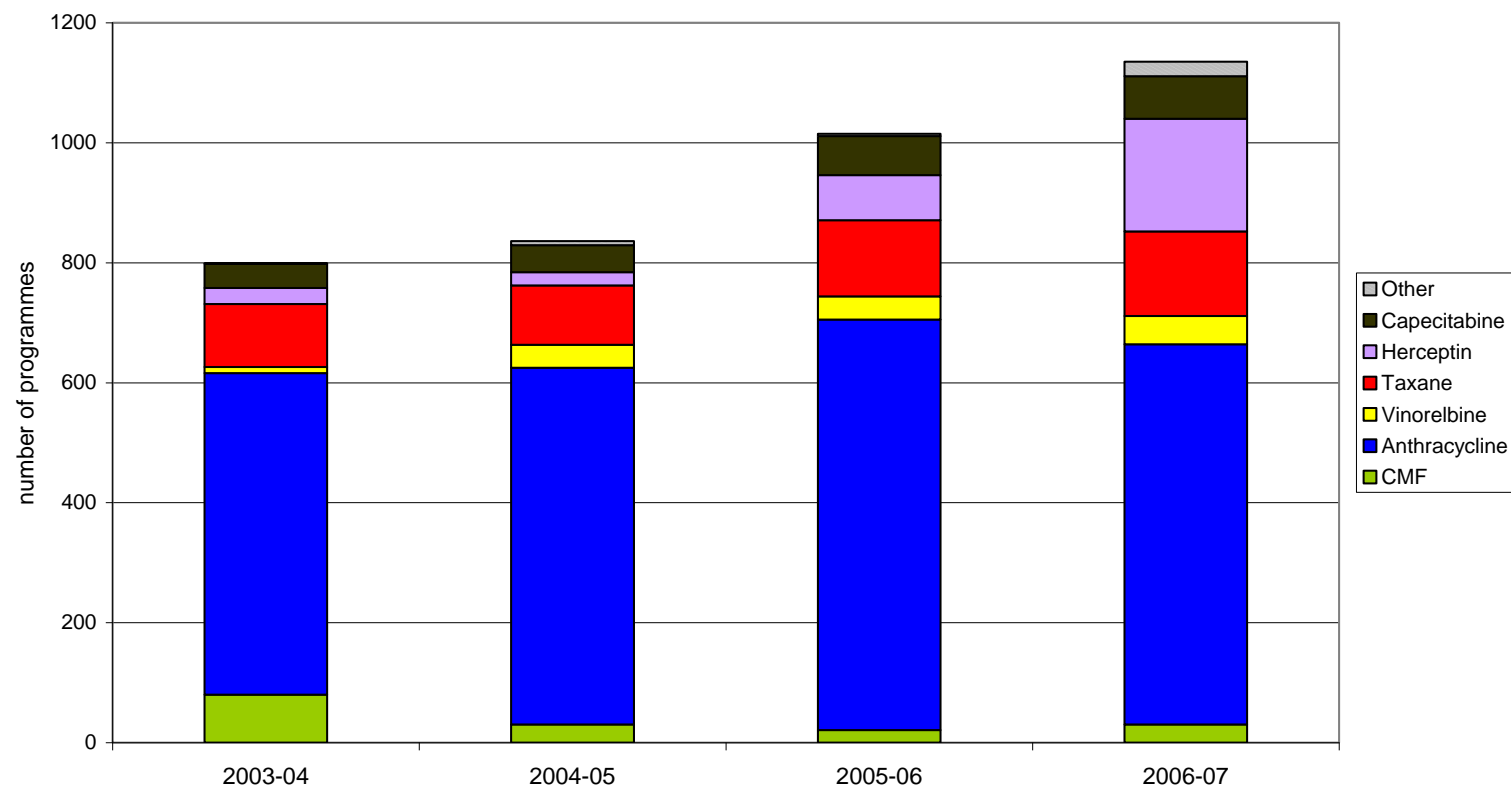
Colorectal cancer chemotherapy by regimen by centre 2006-07



Source: Monica Roche: Oxford Cancer Intelligence Unit

Links with treatment data

Breast cancer chemotherapy trends



Source: Monica Roche: Oxford Cancer Intelligence Unit

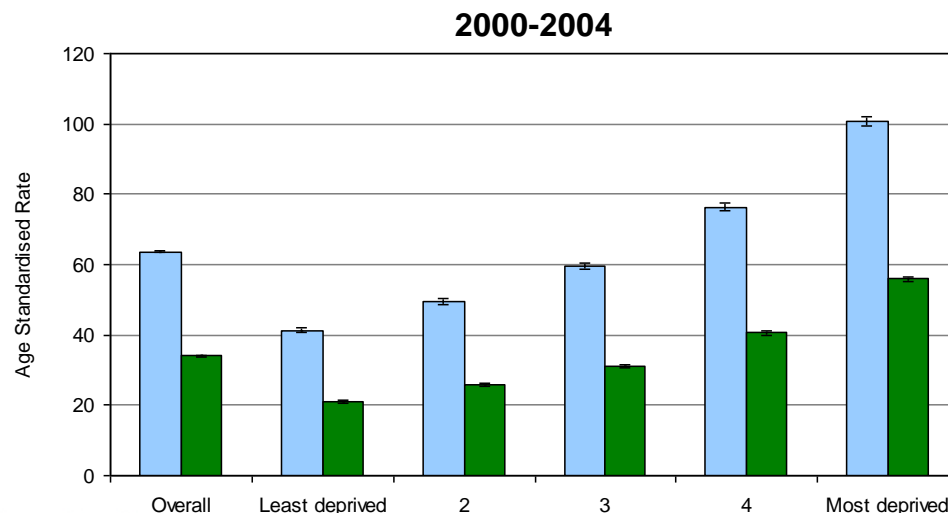
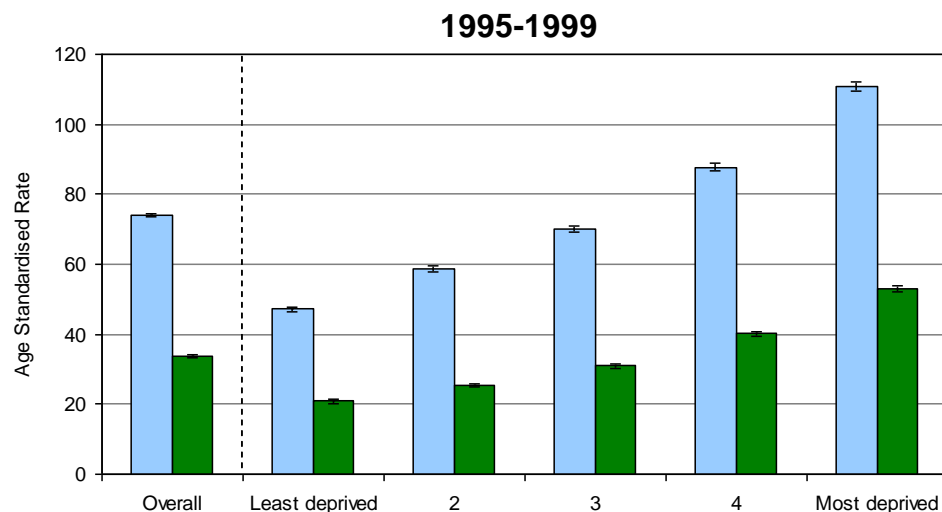
Coordinated National Data Management



- Linked National Cancer Data Repository (NCDR)
 - ONS Registration record
 - Extended registry records (staging, treatments)
 - Hospital Episodes (IP)
 - Covers England only
- GPRD (controlled linkage)
- To Follow:
 - HES OP
 - National audit data
 - Cancer Waiting Times (referral data, recurrence)
 - Radiotherapy (mandated from April 2009)
 - HES A&E

Using information to improve quality & choice

C33-C34: Lung cancer 2000 - 2004 by deprivation



Breast cancer	GP/OP referral	Two Week Wait	Emergency presentation	Other outpatient	Screen detected	Inpatient elective	DCO	Unknown	Total	Number of patients
15-19	0%	0%	0%	100%	0%	0%	0%	0%	100%	1
20-24	0%	0%	0%	0%	0%	0%	0%	100%	100%	1
25-29	27%	47%	0%	0%	0%	0%	0%	27%	100%	15
30-34	20%	43%	0%	4%	0%	4%	0%	30%	100%	56
35-39	14%	50%	3%	7%	0%	1%	0%	25%	100%	169
40-44	11%	53%	3%	8%	1%	1%	0%	23%	100%	318
45-49	12%	55%	2%	7%	6%	1%	0%	18%	100%	432
50-54	7%	27%	1%	4%	47%	1%	0%	13%	100%	545
55-59	6%	25%	1%	4%	50%	1%	0%	11%	100%	628
60-64	5%	25%	2%	5%	51%	2%	0%	10%	100%	772
65-69	4%	23%	3%	4%	57%	1%	0%	7%	100%	715
70-74	9%	45%	5%	5%	25%	1%	0%	10%	100%	480
75-79	7%	56%	7%	4%	9%	4%	0%	13%	100%	587
80-84	9%	56%	9%	6%	3%	3%	1%	13%	100%	433
85+	8%	54%	20%	2%	0%	2%	2%	13%	100%	494
Total	8%	40%	5%	5%	28%	2%	0%	13%	100%	5,646

Breast Routes to Diagnosis: by age band

All malignant registrations
South West 2007
excluding C44 and multiples

Lung Routes to Diagnosis: by deprivation quintile

All malignant registrations, South West 2007, excluding C44 and multiples

Lung cancer	GP/OP referral	Two Week Wait	Emergency presentation	Other outpatient	Screen detected	Inpatient elective	DCO	Unknown	Total	Number of patients
5 (least deprived)	17%	24%	37%	10%	0%	4%	1%	7%	100%	631
4	16%	26%	37%	10%	0%	4%	1%	7%	100%	872
3	14%	26%	38%	11%	0%	3%	1%	7%	100%	1,041
2	14%	27%	40%	9%	0%	3%	1%	6%	100%	917
1 (most deprived)	13%	25%	41%	10%	0%	4%	1%	6%	100%	432
Total	15%	26%	38%	10%	0%	4%	1%	7%	100%	3,893

Using information to improve quality & choice