



Cancer patients who present as an emergency in England, by CCG and Cancer Alliance

Main findings

The latest quarterly emergency presentations of cancer figures, at national and CCG level, show that:

- Between April to June 2018, of 68,907 cancer patients first presenting at hospital in England, 12,811 (18.6%) presented as an emergency; this represents a decrease from the previous quarter (January to March 2018) when the proportion was 18.7%
- in England, the annual average proportion of cancer patients who first presented as an emergency has gradually fallen over the last five years reported, from 20.2% in July 2013 to June 2014 to 18.8% in July 2017 to June 2018
- at Clinical Commissioning Group (CCG) level, there was a large variation in the proportion of cancer patients who first presented as an emergency in the most recent quarter (April to June 2018); across the 195 CCGs the proportion varied from 2.2% to 31.9%, with an interquartile range* of 16.5% to 20.7%. The lowest percentages reported are likely to reflect the incompleteness of the Hospital Episode Statistic (HES) data, rather than the true proportion of emergency presentations in the CCG
- over the last five years reported (between July 2013 to June 2014 and July 2017 to June 2018), the proportion of cancer patients presenting as an emergency has fallen for 141 CCGs, and either risen or remained unchanged for 54 CCGs
- at a Cancer Alliance level, the proportion of cancer patients who first presented as an emergency in the most recent quarter (April to June 2018) varied from 16.3% to 21.9%, with an interquartile range* of 17.4% to 19.3%

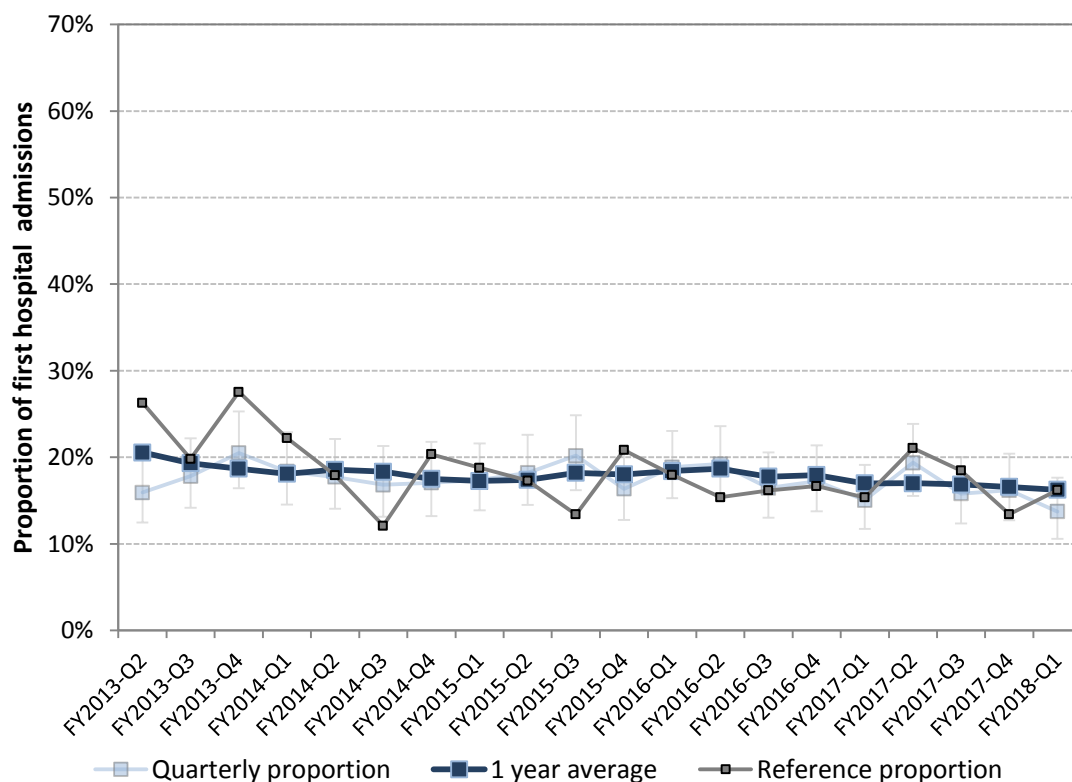
*The interquartile range describes the distribution of values from the 25% to 75% percentile, and therefore covers half of the range in values around the median (average).

Summary

The accompanying spreadsheets present the proportion of all patients with malignant cancer (excluding non-melanoma skin cancer) who present as an emergency at CCG level, by Cancer Alliance, and nationally, both quarterly and with a 1-year rolling average (which combines the result for the latest quarter with those from the previous three quarters). The most recently available results are for April to June 2018 (financial year Q1), with trends available from July to Sept 2013 (Q2).

http://www.ncin.org.uk/cancer_type_and_topic_specific_work/topic_specific_work/cancer_outcome_metrics

Figure 1. Trend in the proportion of first hospital admissions that are emergencies in England (reference) and for an example CCG



Background

Emergency presentation is an important predictor of cancer outcomes: patients with cancers that present as an emergency suffer significantly worse outcomes. The **recent cancer**

strategy for England recommended that the proportion of emergency presentations should be regularly reported and reviewed. The metric estimates the proportion of emergency presentations using first admissions to hospital as a proxy for emergency diagnosis. This allows more rapid reporting.

Notes on interpretation

There are some cancers, e.g. brain or children's cancers, where emergency presentation is likely to be the most appropriate route to diagnosis.

While a fall in emergency presentations may correlate with improved survival, this is not necessarily a direct cause and many other factors will be involved.

The denominator is all tumours identified from Admitted Patient Care Hospital Episode Statistics (HES) and therefore does not include all diagnosed tumours registered by the National Cancer Registration and Analysis Service (NCRAS). Consequently, the results presented here may differ from publicly available results such as **Routes to Diagnosis**.

The indicator is not adjusted for case-mix. In particular CCGs/Alliances with an older population can expect to see a larger number of emergency presentations. CCGs/Alliances with a larger number of lung cancers (due to smoking prevalence) or smaller number of breast cancers (due to broader socio-economic factors) can also expect to see a larger proportion of emergency presentations.

The number of cancer patients reported in each quarterly set of emergency presentation results can change over time, due to additional cancer registration information becoming available. As such, the historical quarterly percentages reported may also be subject to small changes.

Smaller numbers at CCG level will result in large variability in emergency presentations, and larger confidence intervals.

Further Information

A document, further detailing the data sources and methodology used to create the emergency presentations indicator, is available to download here:

<http://www.ncin.org.uk/view?rid=3058>

Other background information is also available:

- Cancer Outcome Metrics:
http://www.ncin.org.uk/cancer_type_and_topic_specific_work/topic_specific_work/cancer_outcome_metrics

- Routes to Diagnosis: http://www.ncin.org.uk/publications/routes_to_diagnosis
- Independent Cancer Taskforce Strategy:
http://www.cancerresearchuk.org/sites/default/files/achieving_world-class_cancer_outcomes_-_a_strategy_for_england_2015-2020.pdf

For queries relating to this document, please contact: ncrasenquiries@phe.gov.uk

First published: January 2019

© Crown copyright 2019

Re-use of Crown copyright material (excluding logos) is allowed under the terms of the Open Government Licence, visit www.nationalarchives.gov.uk/doc/open-government-licence/version/3/ for terms and conditions.