

Priorities from the Head and Neck Site Specific Clinical Reference Group

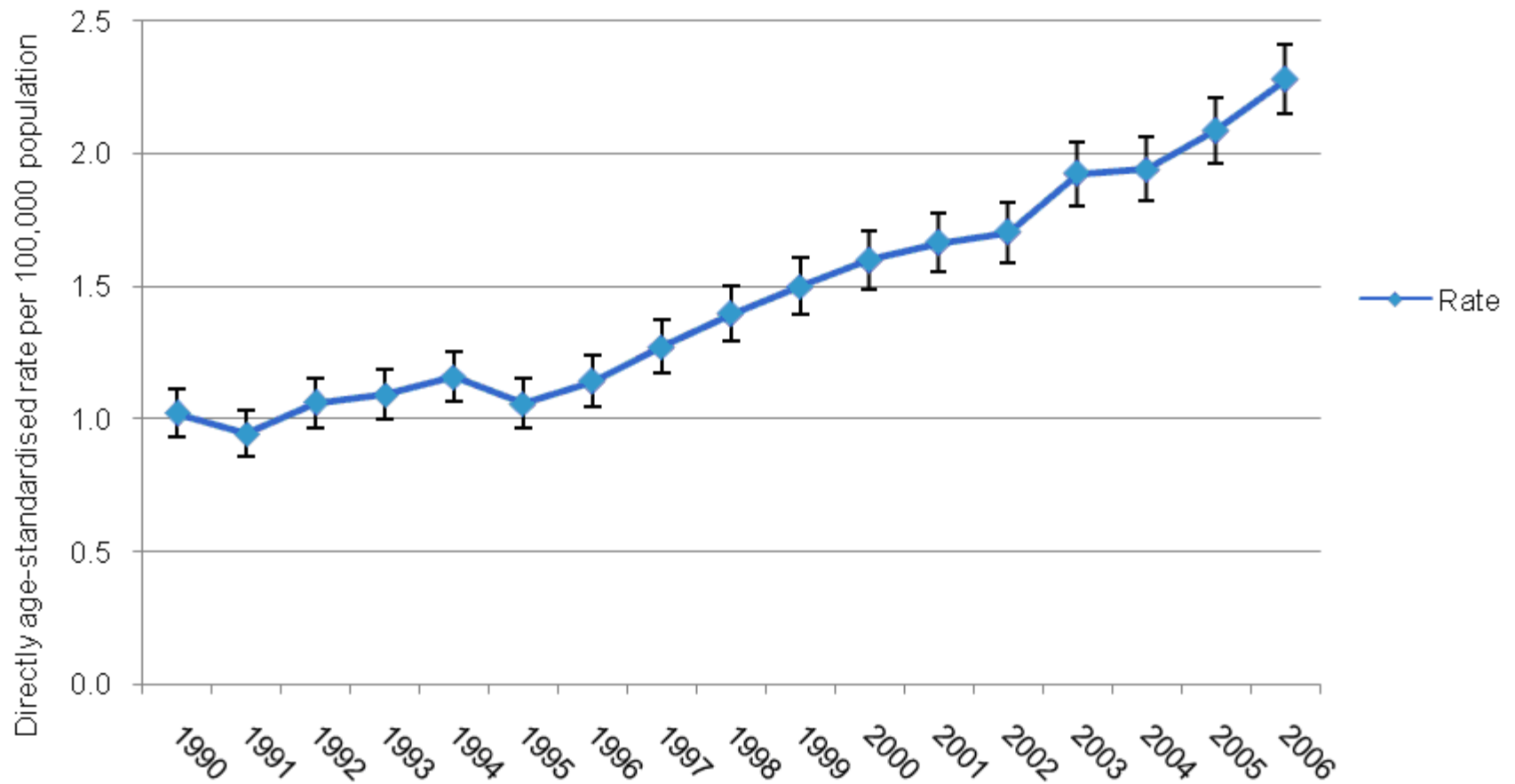
Dr Monica Roche
Oxford Cancer Intelligence Unit
26 November 2009

SSCRG work programme

- **Profile of Head and Neck Cancers for England**
- **NCIN briefing paper**
- **Head and Neck Cancers e-Atlas**
- **National Head and Neck Cancer Audit**
- **Proposed Analyses using the National Cancer Data Repository (NCDR) for England**

Profile of Head and Neck Cancers for England

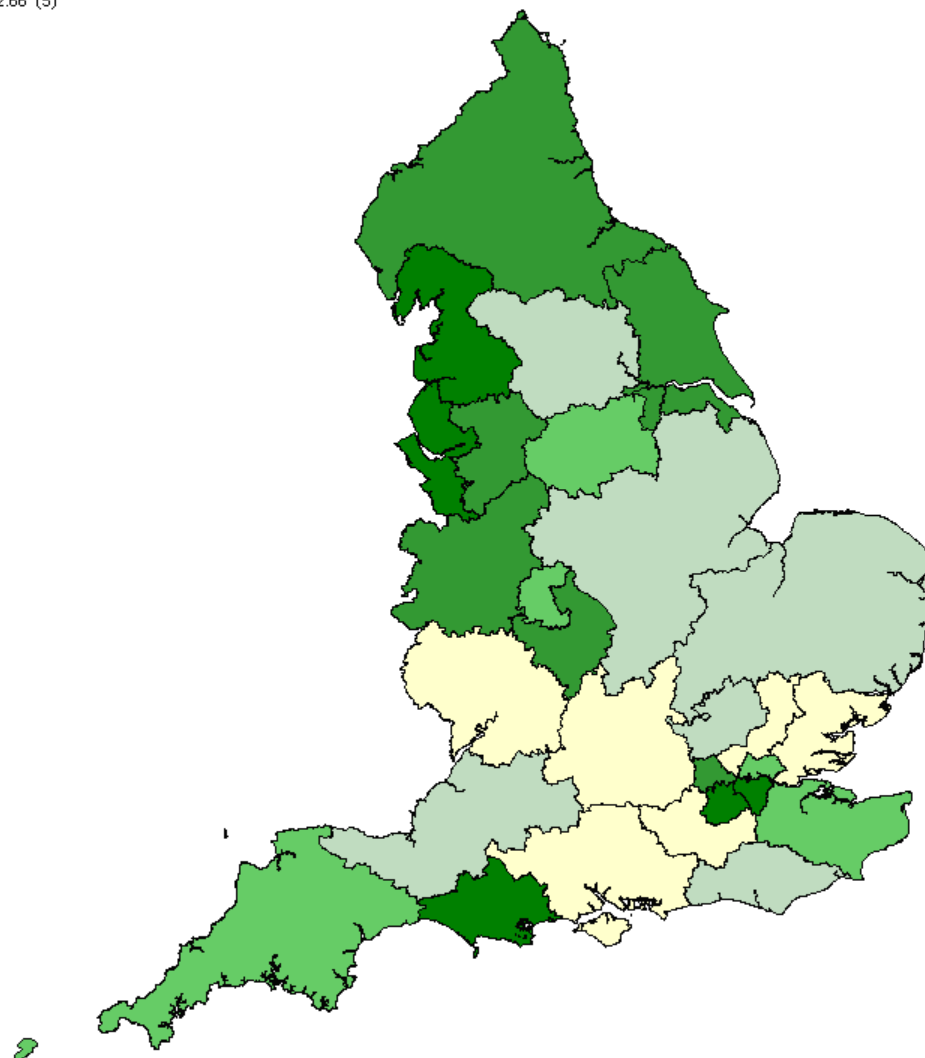
Trends in oropharynx cancer incidence in England, 1990-2006



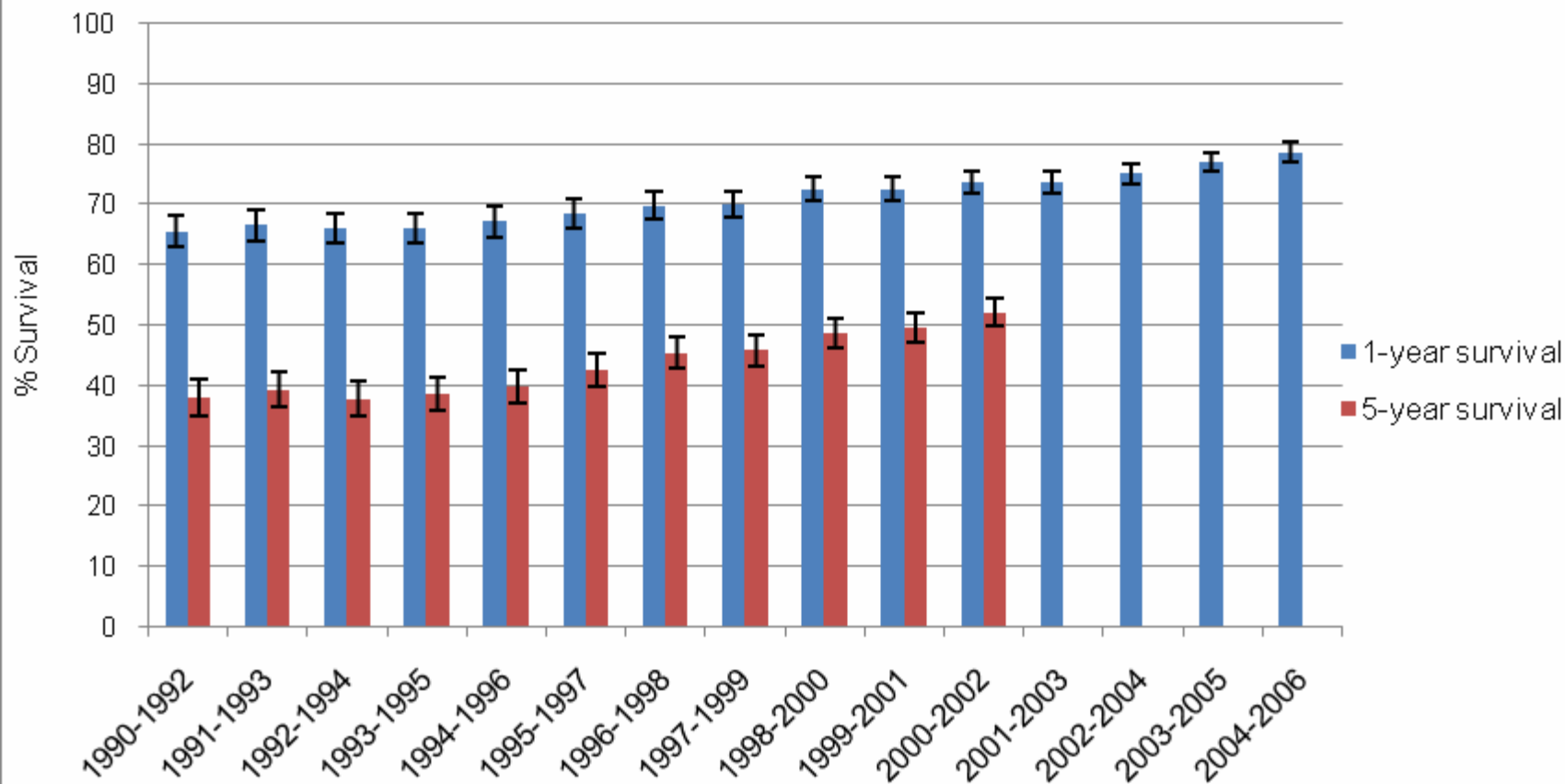
Persons diagnosed with oropharynx cancer excluding soft palate

Age standardised rate per 100,000 population

- 1.56 to 1.76 (6)
- 1.77 to 1.87 (6)
- 1.88 to 2.06 (5)
- 2.07 to 2.40 (6)
- 2.41 to 2.66 (5)



Trends in 1-year and 5-year relative oropharynx cancer survival in England, 1990-92 to 2004-06



Head and Neck Cancers e-Atlas

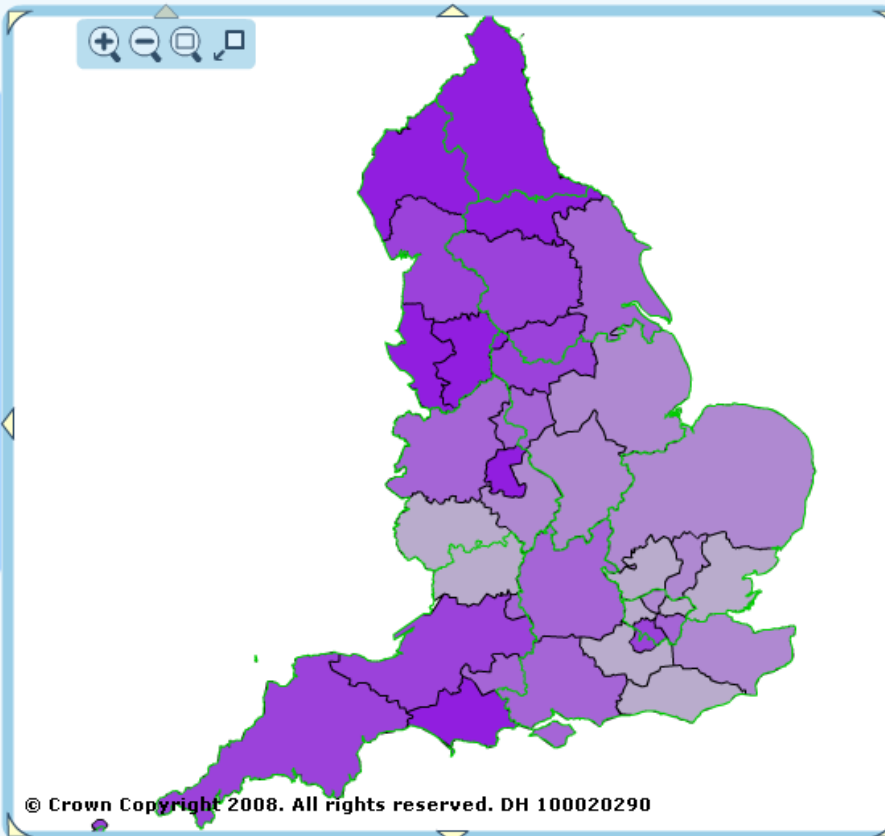
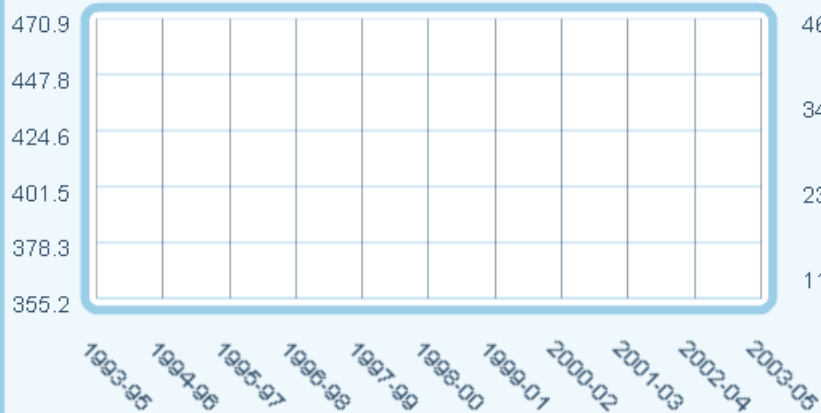
All malignant neoplasms (exc. non-melanoma) : Incidence >> Males >> 2003-05

Data Filter Clear Notes

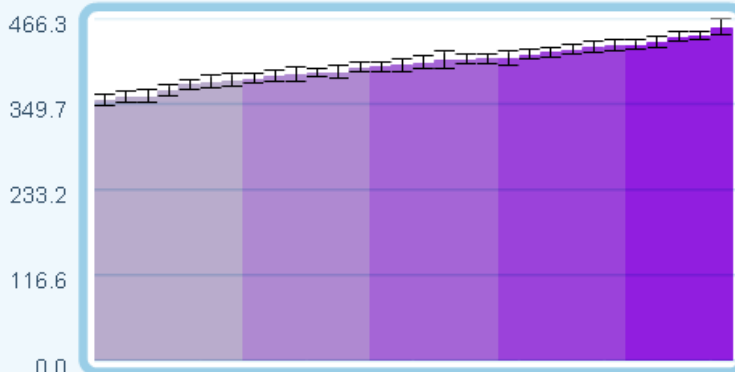
Cancer Network ▲	Rate	Av. Count	
Anglia	393.8	6,686.3	🔍
Arden	394	2,320.3	🔍
Avon, Somerset & Wiltshire	430.7	4,931.0	🔍
Central South Coast	411.9	5,126.7	🔍
Derby Burton	410.2	1,695.3	🔍
Dorset	455.3	2,432.3	🔍
Essex	377.1	3,943.0	🔍
Greater Manchester & Chest	443.1	7,414.7	🔍
Greater Midlands	401.4	4,696.0	🔍
Humber & Yorkshire Coast	407	2,714.3	🔍
Kent & Medway	385	3,742.7	🔍
Lancashire and South Cumb	428.9	4,246.7	🔍
Leics, Northants & Rutland	389.4	3,510.0	🔍
Merseyside & Cheshire	441.8	4,945.7	🔍
Mid Trent	400.7	4,112.0	🔍

Comparison Areas
England: 407.2
North East GOR: 441.6
North West GOR: 437.2
Yorkshire & Humber GOR: 420.1

Time Series Chart



Source: NCIN/APHO/UKACR. From Cancer e-atlas (www.ncin.org.uk/eatlas) 2008



- Double Map
- Excel data
- Print Preview
- Help

Legend

Quantile legend

- 355.2 - 383.7
- 383.8 - 401.1
- 401.2 - 412.2
- 412.3 - 431.1
- 431.2 - 455.3

Map Layers

- GORs
- Background Map



Priorities – Data quality

- Linking data from the National Audit with the NCDR
- Improving coverage of the audit
- Reviewing the completeness of the follow up data from the audit

Priorities - Analysis

- Risk adjusted outcomes
- Post-operative mortality rates
- Patient pathways
- Patterns of surgical care
- Treatment patterns and proximity to specialist services
- Length of stay (LOS) by diagnosis and procedure
- Trends and treatment patterns for in situ carcinomas

Risk adjusted outcomes

- Survival rates by age, stage, deprivation, ethnicity
- Impact of co-morbidities and performance status on outcomes

Risk adjusted outcomes

- Post treatment complications
- Recurrences
- Speech and swallowing status

The Head and Neck SSCRG will consider other suggestions for areas of work or requests for specific analyses

Any questions?