



Public Health
England

National Cancer Registration and Analysis Service

National Data Sources and Recent Developments at PHE

CNS and Brain Workshop, 12th April 2016

Jason Poole, Deputy Head of Cancer Analysis



Recent Developments

- Securing our Future
- Forman review
- Independent Cancer Taskforce Report
 - *Save many thousands more lives*
 - *Transform patient experience and quality of life*
 - *Invest to save*

ACHIEVING WORLD-CLASS CANCER OUTCOMES

A STRATEGY FOR ENGLAND
2015-2020





Recent Developments (contd.)

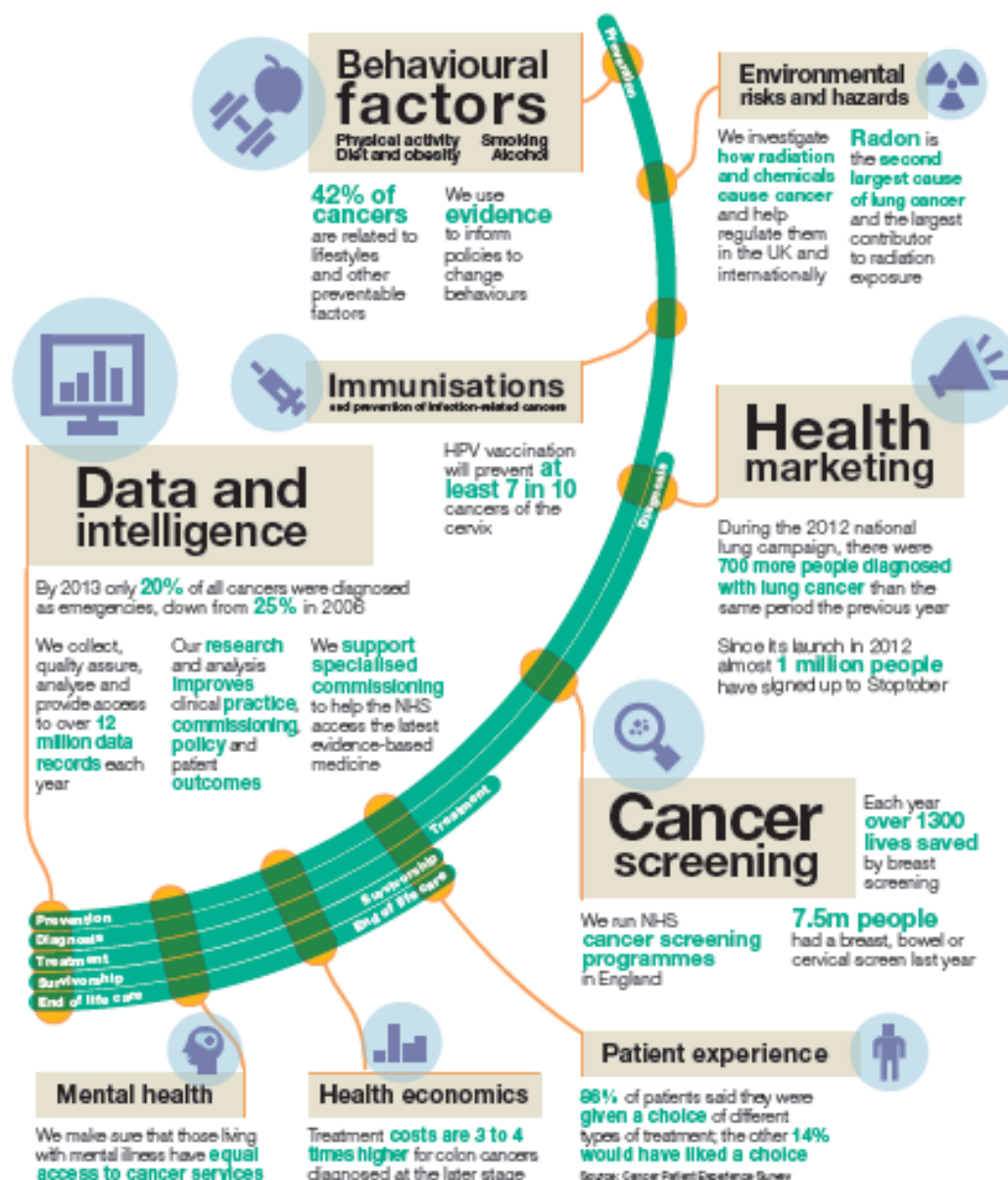
John Newton announcement end January

Developments:

- PHE Cancer Board incl. CRUK, Macmillan.
- Integrated cancer strategy for PHE by summer 2016
- NCRAS. No longer use NCIN brand.
- Director of Cancer Analysis and Registration (Jem Rashbass)
- Senior Team incl. Deputy Heads of Cancer Analysis
- “The site-specific clinical reference groups continue to do an excellent job for PHE. We will consider how their work can be better aligned with other similar groups in NCRI, NICE and NHSE.”
- PHE Cancer Data and Outcomes Conference (June 13th/14th)

PHE is committed to beating cancer

More than 400 of our staff are working on cancer through all steps of the patient pathway.





Public Health
England

National Data Sources

Cancer registration (COSD)

Hospital Episode Statistics

Treatment – SACT, RTDS

Cancer Waiting Times

National Audits

Patient Experience – CPES, PROMs

Prescriptions

Diagnostic Imaging

++



Key analytical deliverables - outline

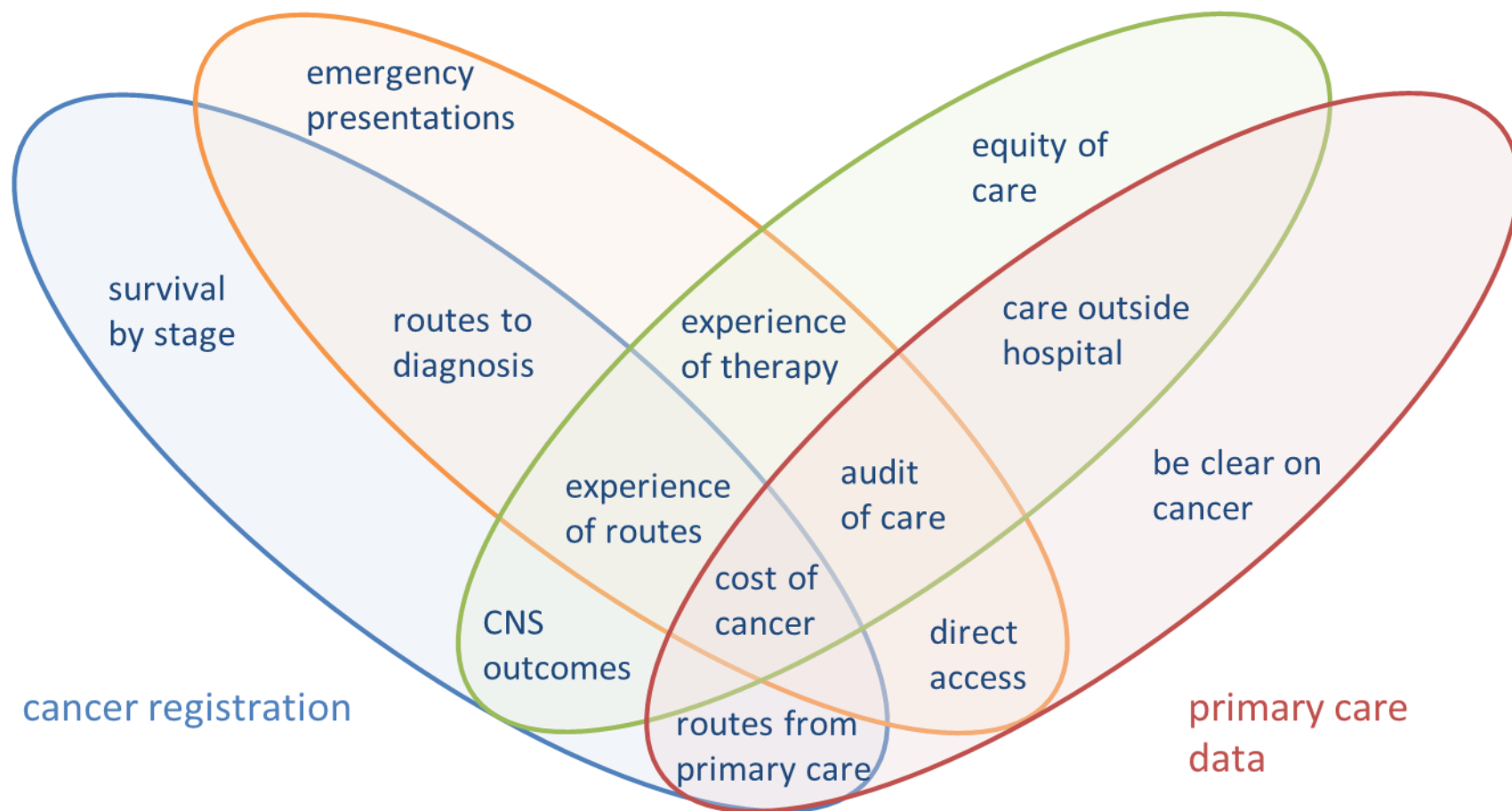
Pre-diagnosis:	RtD, Prescription data, BCOC, ACE, Primary Care Audit
Screening	
Diagnosis:	DIDs
Therapeutics:	Chemo, RTDS, Treatment pathway, Geographical variation, Surgery sub-speciality metrics
Progression:	Progressive cancers, recurrence
Survivorship:	Prevalence
Death:	Survival (incl. by stage)
Experience:	CPES, PROMs,
Infrastructure:	Dashboards, Clinical Headline Indicators, CancerData, GP Profiles, CSQM



Opportunity: linking huge datasets

treatment datasets

patient experience



Treatment datasets: Systemic Anti-Cancer Therapy (SACT), Radiotherapy Dataset (RTDS), Hospital Episode Statistics (HES), Cancer Waiting Times (CWT)
CNS: Clinical Nurse Specialist



Public Health
England

SACT for England - a world first

[Home](#) [About SACT](#) [FAQs](#) [About CIU](#) [SACT Training](#) [Reports](#) [Conferences](#)

Welcome to the SACT Systemic Anti-Cancer Therapy Dataset website

Start upload

Anon_10.csv

Demo_10.csv

C52X.csv

upload.csv

How to upload your data ▶

Watch a video and read step-by-step instructions on how to upload chemotherapy data

Data submissions ▶

View details of which trusts have uploaded their data into the SACT system

[FEC + DOCETAXEL](#) 8,224

[DOCETAXEL](#) 7,397

[PACLITAXEL](#) 6,800

Top regimens ▶

View the most common regimens used to treat each type of cancer

This website brings together all current information on the Systemic Anti-Cancer Therapy (SACT) Dataset and its collection by the Chemotherapy Intelligence Unit (CIU). It provides guidance on the background to the dataset, what it covers and how to prepare for data submission via the [upload portal](#).

Register and Submit

Register on portal [Register](#)

Access portal [Portal](#)

[What you need to do](#)

[Monthly Process](#)

[Monthly Submission](#)

[Timetable](#)

Helpdesk Info Snapshots and Training Information

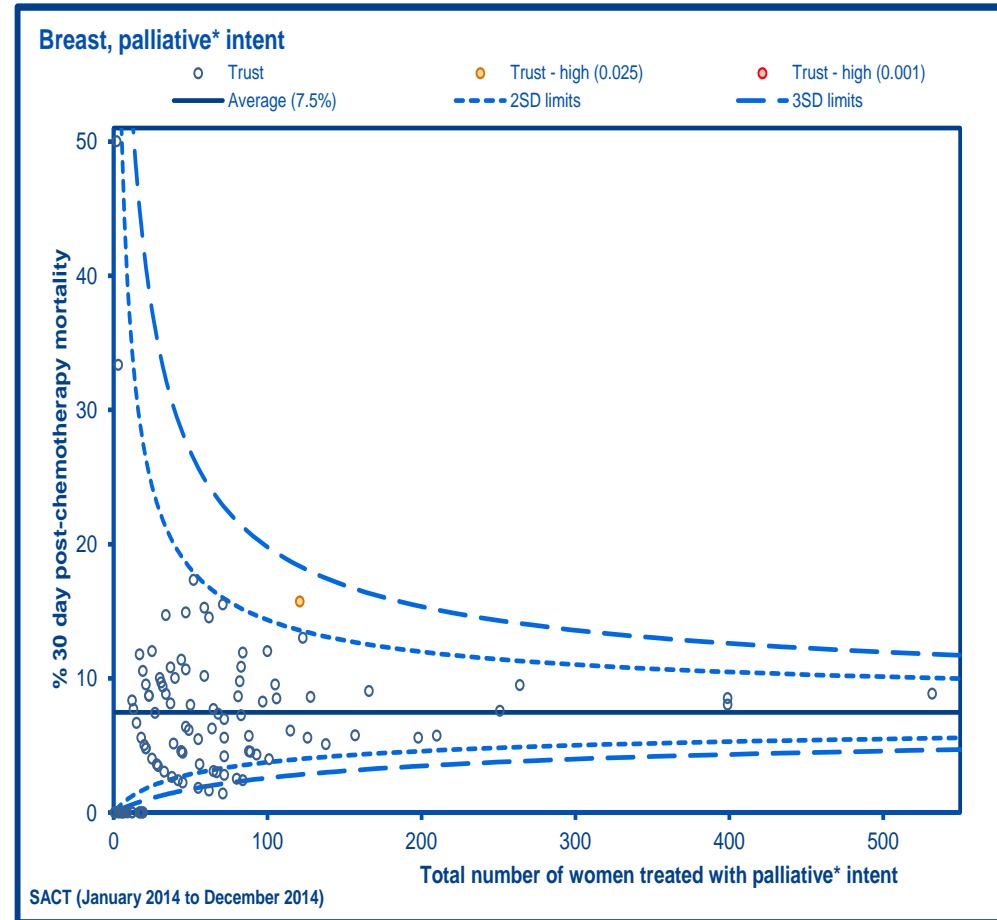
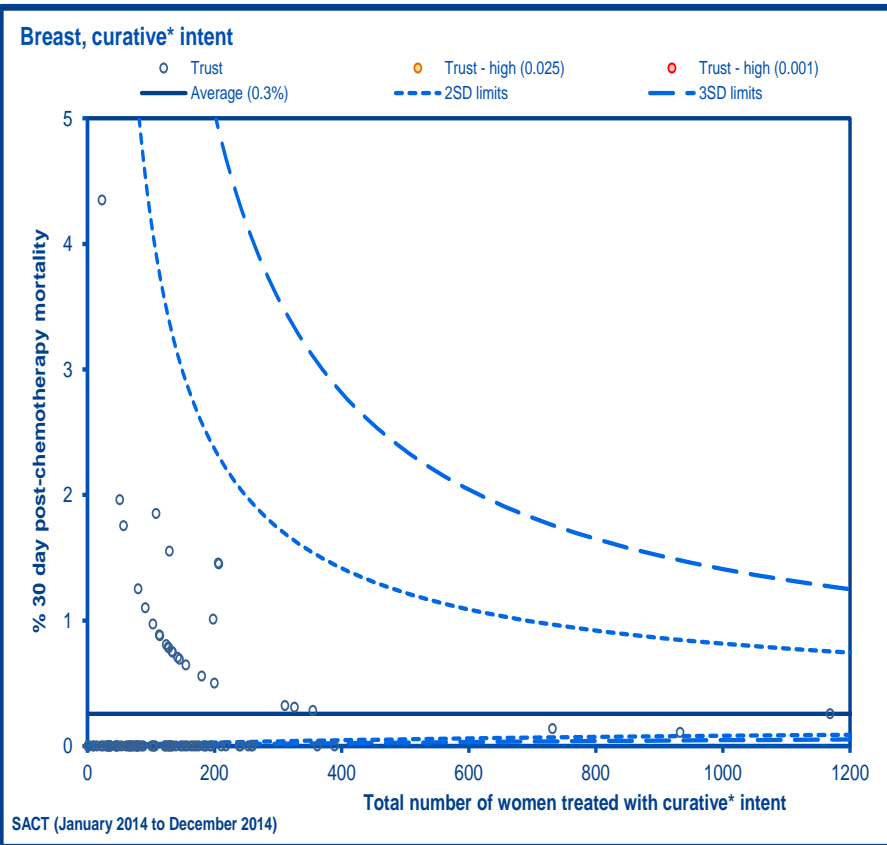
[Click here to access snapshots and information on training](#)

SACT Data

SACT Data Completeness report (December 2014 to November 2015)

England															
All Diagnostic Groups															
Number of patients		% NHS Number		% Date of Birth		% Current gender		% Ethnicity		% Patient postcode					
177,869	↑	100%	M	100%	M	100%	→	95%	→	100%	M				
Number of tumour records		% GP Practice Code		% GMC Code		% Consultant Specialty		% Primary diagnosis		% Morphology		% Stage of disease at start of programme			
188,828	↑	92%	→	95%	→	95%	→	100%	→	51%	↑	53%	↓		
Number of regimens		% Programme number		% Regimen number		% Treatment intent		% Regimen name		% Height at start of regimen		% Weight at start of regimen		% Performance Status at start of regimen	
282,713	↑	88%	→	77%	↑	92%	→	100%	M	70%	↑	72%	↑	57%	↑
		% Comorbidity adjustment		% Date of decision to treat		% Start date of regimen		% Clinical trial		% Chemo radiation		% Number of cycles planned			
		60%	↑	89%	↓	100%	M	90%	↑	83%	↑	77%	↑		
Number of cycles		% Cycle number		% Start date of cycle		% Weight at start of cycle		% Performance Status at start of cycle		% OPCS procurement code		% of Cycles with Drug records			
917,141	↑	100%	M	98%	→	70%	↑	61%	↑	67%	→	94%	→		
Number of drug records		% Drug name		% Actual dose per administration		% Administration route		% Administration date		% OPCS Delivery code		% Organisation code of drug provider			
2,315,211	↑	100%	→	96%	↑	98%	→	100%	→	74%	→	99%	↑		
Number of outcome records		% Date of Final Treatment		% Regimen modification (dose reduction)		% Regimen modification (time delay)		% Regimen modification (stopped early)		% Regimen outcome summary		% Date of death			
225,289	↑	34%	↑	68%	↑	39%	↑	65%	↑	9%	→	14%	↓		

30 day mortality – breast, by trust



To be published soon

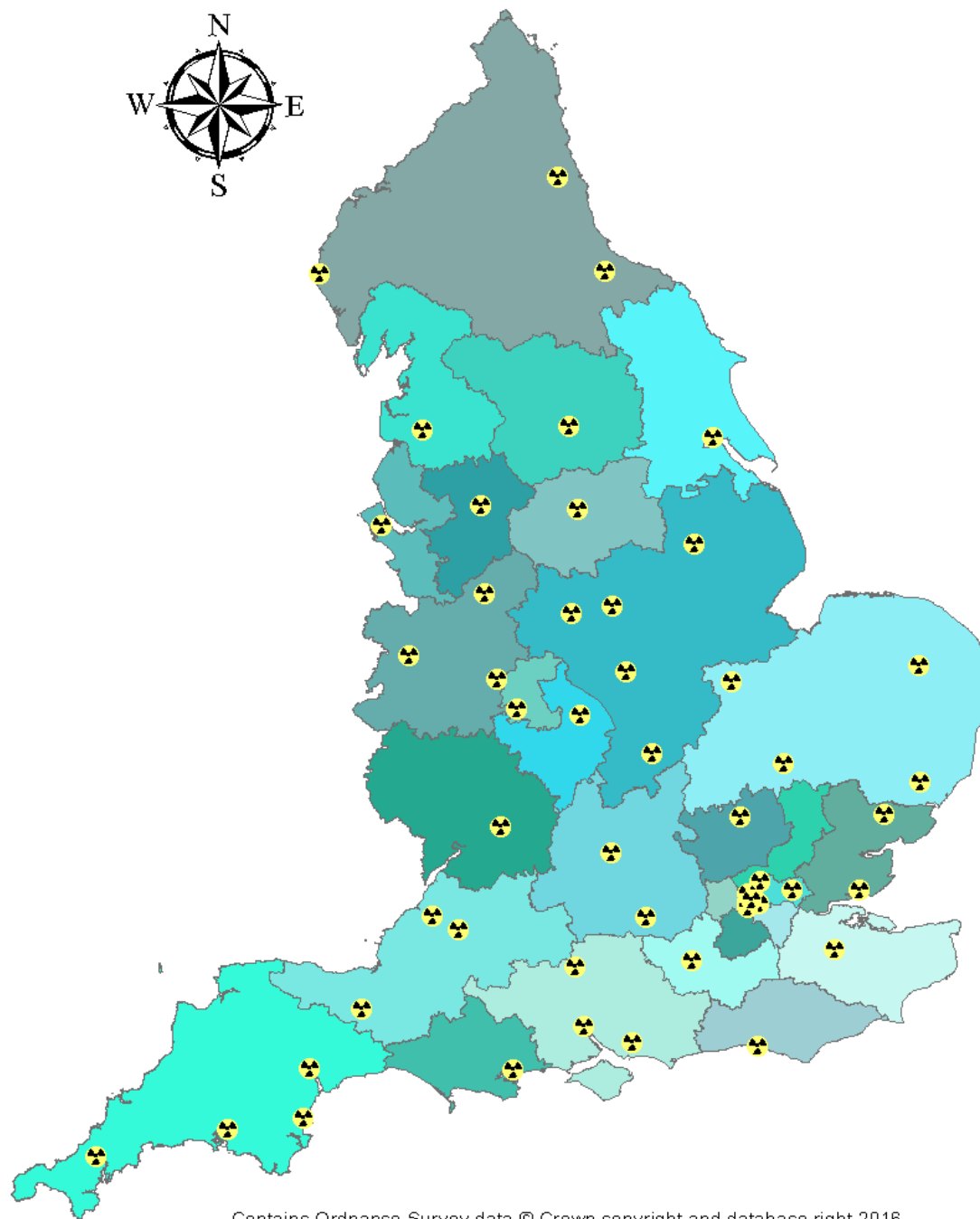
.....



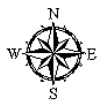
Public Health
England



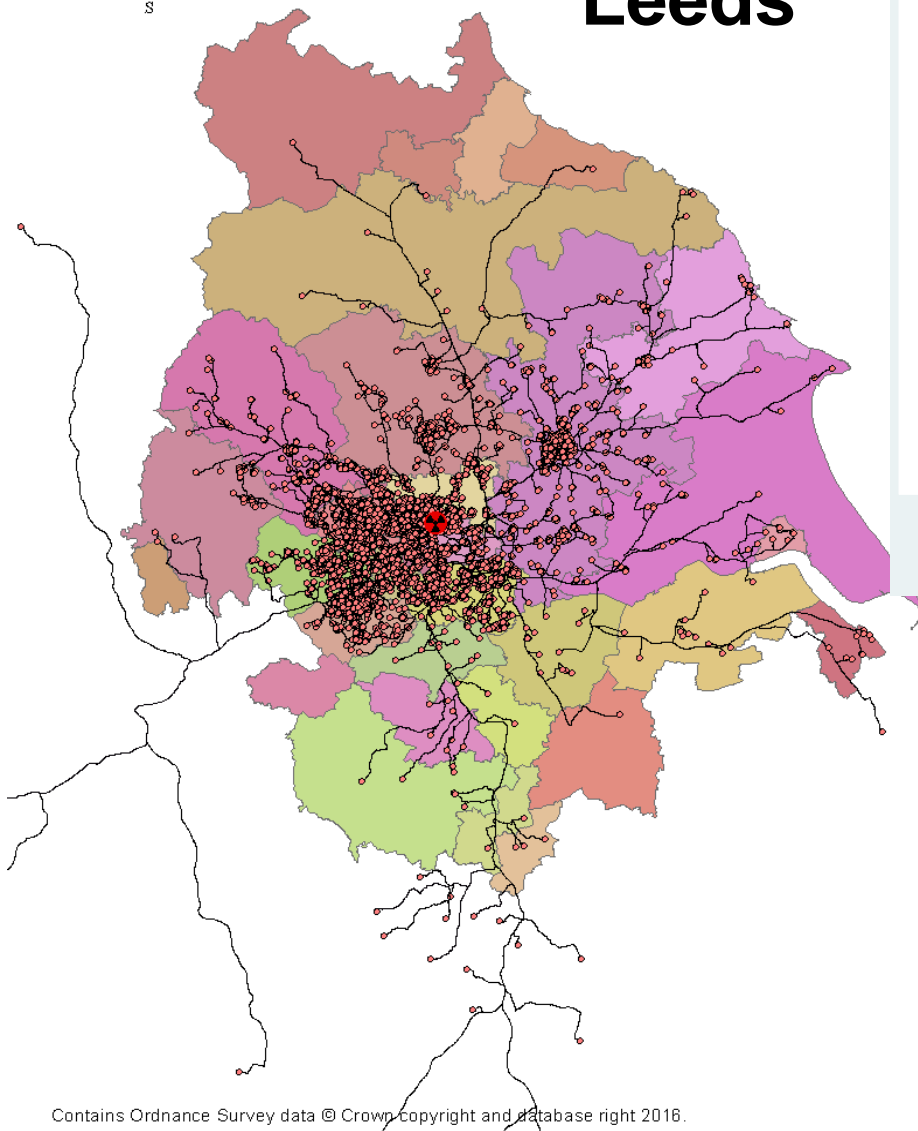
Radiotherapy centres in England



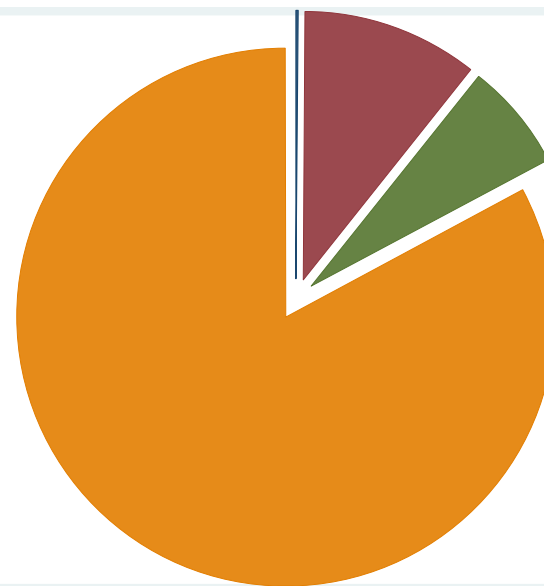
Contains Ordnance Survey data © Crown copyright and database right 2016.



Leeds



Contains Ordnance Survey data © Crown copyright and database right 2016.



4 hours to 6 hours	45 minutes to 1 hour
1 hour to 4 hours	≤45

Work in progress:

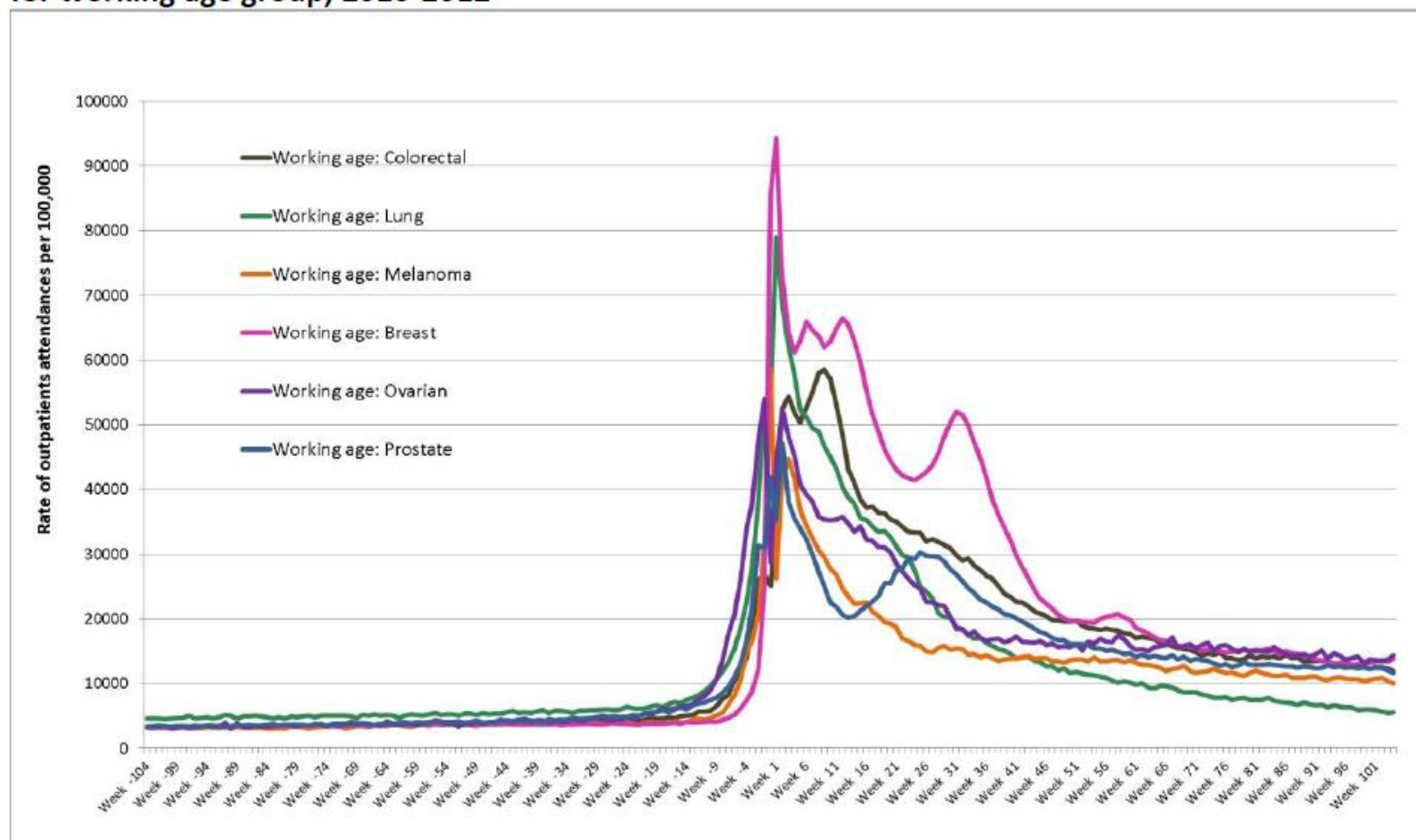
“Mapping radiotherapy activity across England between 1st April 2014 and 31st March 2015. ICD-10 codes (C00 – C97 exc C44) were included in these analyses.”



Public Health
England

People of Working Age with Cancer - Unpublished

Figure 4: Outpatient attendances by week and cancer type for two years either side of diagnosis for working age group, 2010-2012





Public Health
England

Thank you!

Jason.Poole@phe.gov.uk