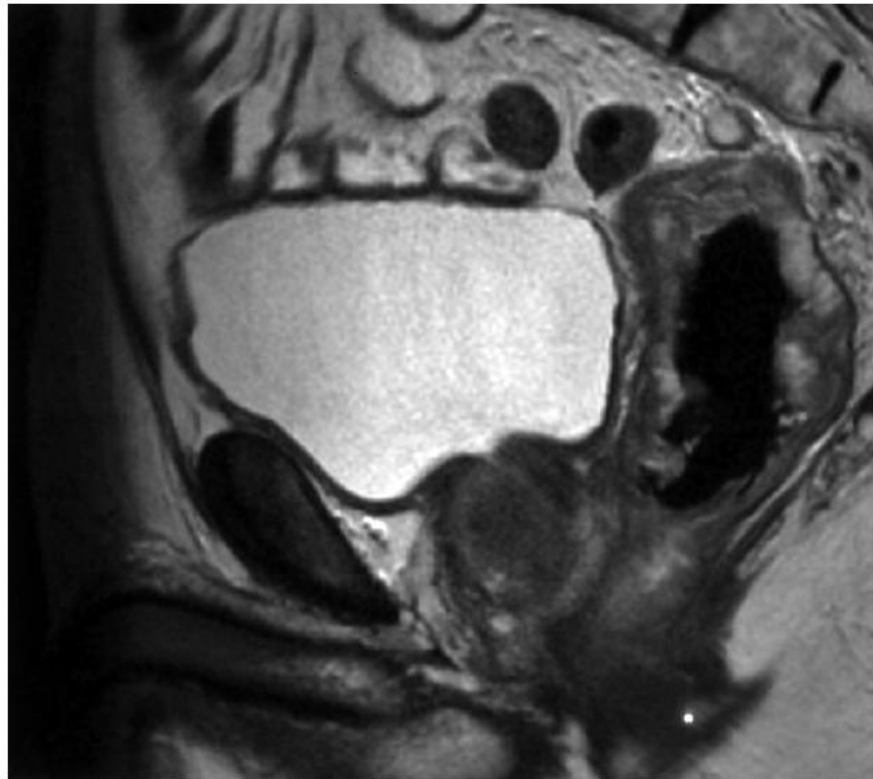


Dealing with Outlying Trusts “Perceived and Confirmed”

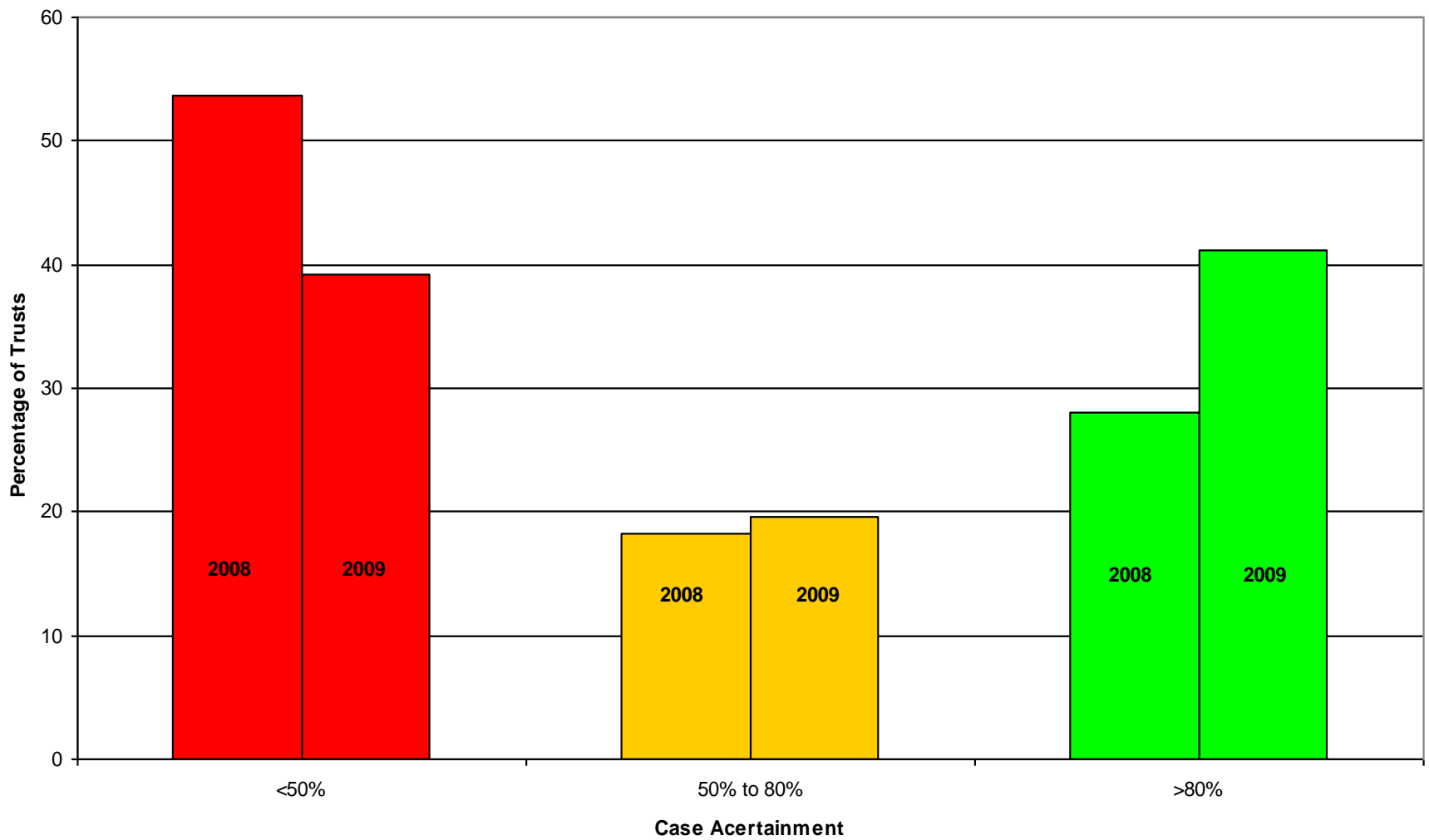
P J Finan

Chairman, Colorectal Site Specific
Clinical Reference Group, NCIN
& Clinical Lead, NBOCAP

National
Bowel
Cancer
Audit
2009



Case Ascertainment

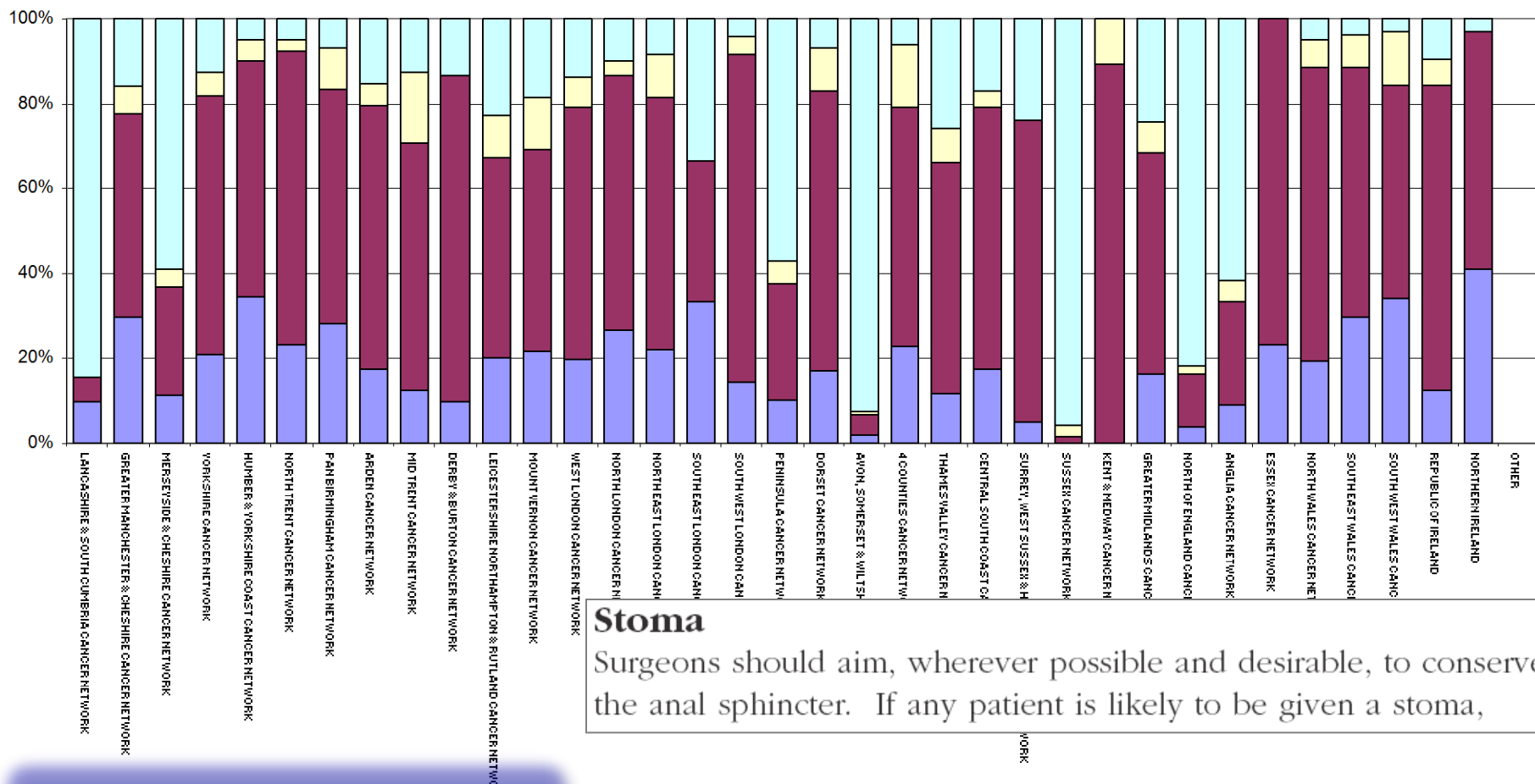


Case ascertainment & data quality

THE ROYAL BOURNEMOUTH AND CHRISTCHURCH HOSPITALS NHS FOUNDATION TRUST	Y	Y	Green	Green
THE ROYAL MARSDEN NHS FOUNDATION TRUST	x	x	Red	Red
THE ROYAL WOLVERHAMPTON HOSPITALS NHS TRUST	Y	Y	Red	Red
THE WHITTINGTON HOSPITAL NHS TRUST	Y	x	Red	Red
TRAFFORD HEALTHCARE NHS TRUST	x	x	Red	Red
UNITED BRISTOL HEALTHCARE NHS TRUST	Y	Y	Green	Red
UNITED LINCOLNSHIRE HOSPITALS NHS TRUST	x	x	Red	Red
UNIVERSITY COLLEGE LONDON HOSPITALS NHS FOUNDATION TRUST	Y	Y	Green	Green
UNIVERSITY HOSPITAL BIRMINGHAM NHS FOUNDATION TRUST	x	x	Red	Red
UNIVERSITY HOSPITAL OF NORTH STAFFORDSHIRE NHS TRUST	x	x	Red	Red
UNIVERSITY HOSPITAL OF SOUTH MANCHESTER NHS FOUNDATION TRUST	Y	Y	Green	Green
UNIVERSITY HOSPITALS COVENTRY AND WARWICKSHIRE NHS TRUST	Y	Y	Green	Green
UNIVERSITY HOSPITALS OF LEICESTER NHS TRUST	Y	Y	Green	Green
UNIVERSITY HOSPITALS OF MORECAMBE BAY NHS TRUST	x	Y	Red	Green
WALSALL HOSPITALS NHS TRUST	x	x	Red	Red
WALTON CENTRE FOR NEUROLOGY AND NEUROSURGERY NHS TRUST	x	x	Red	Red
WEST DORSET GENERAL HOSPITALS NHS TRUST	Y	Y	Yellow	Green
WEST HERTFORDSHIRE HOSPITALS NHS TRUST	Y	x	Red	Red
WEST MIDDLESEX UNIVERSITY HOSPITAL NHS TRUST	Y	Y	Green	Green
WEST SUFFOLK HOSPITALS NHS TRUST	Y	Y	Green	Green
WESTON AREA HEALTH NHS TRUST	x	x	Red	Red
WHIPPS CROSS UNIVERSITY HOSPITAL NHS TRUST	Y	x	Red	Red
WINCHESTER AND EASTLEIGH HEALTHCARE NHS TRUST	Y	Y	Green	Green
WIRRAL HOSPITAL NHS TRUST	Y	Y	Red	Green
WORCESTERSHIRE ACUTE HOSPITALS NHS TRUST	Y	x	Red	Red
WORTHING AND SOUTHLANDS HOSPITALS NHS TRUST	Y	Y	Green	Red
WRIGHTINGTON, WIGAN AND LEIGH NHS TRUST	x	x	Red	Red
YEOVIL DISTRICT HOSPITAL NHS FOUNDATION TRUST	x	x	Red	Red
YORK HOSPITALS NHS FOUNDATION TRUST	Y	Y	Green	Green

Grade	DC-2006	DQ-2006
Good	>80% completeness	<20% missing
Fair	50-80% completeness	20-50% missing
Poor	<50% completeness	>50% missing

APER Rates



Stoma

Surgeons should aim, wherever possible and desirable, to conserve the anal sphincter. If any patient is likely to be given a stoma,

2009 Data

16.6% APER rate

Considerable variation

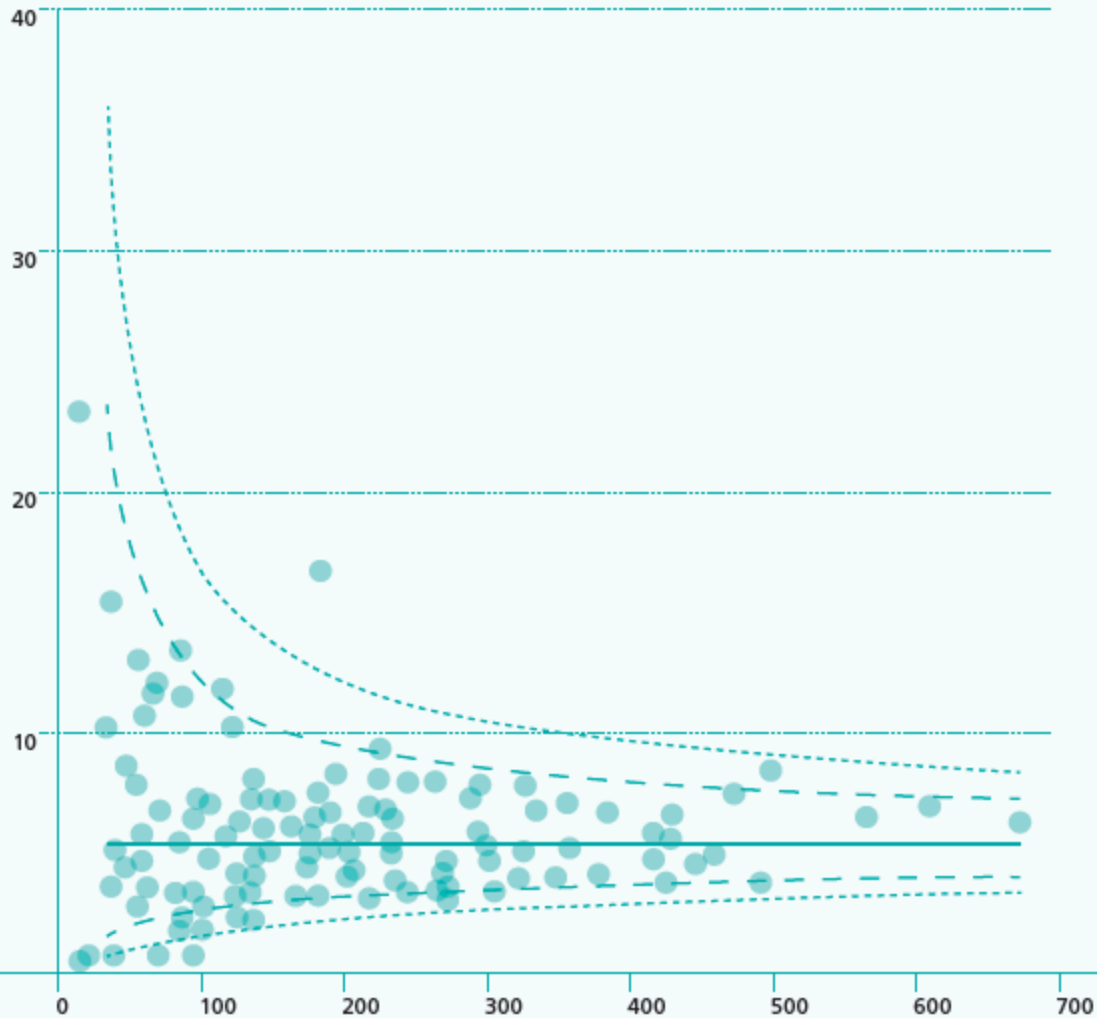
■ APER
 ■ Anterior resection
 ■ Hartmann's
 ■ Other

Outlying Unit

Figure 15
Adjusted 30-day mortality (all Trusts) 2006/8

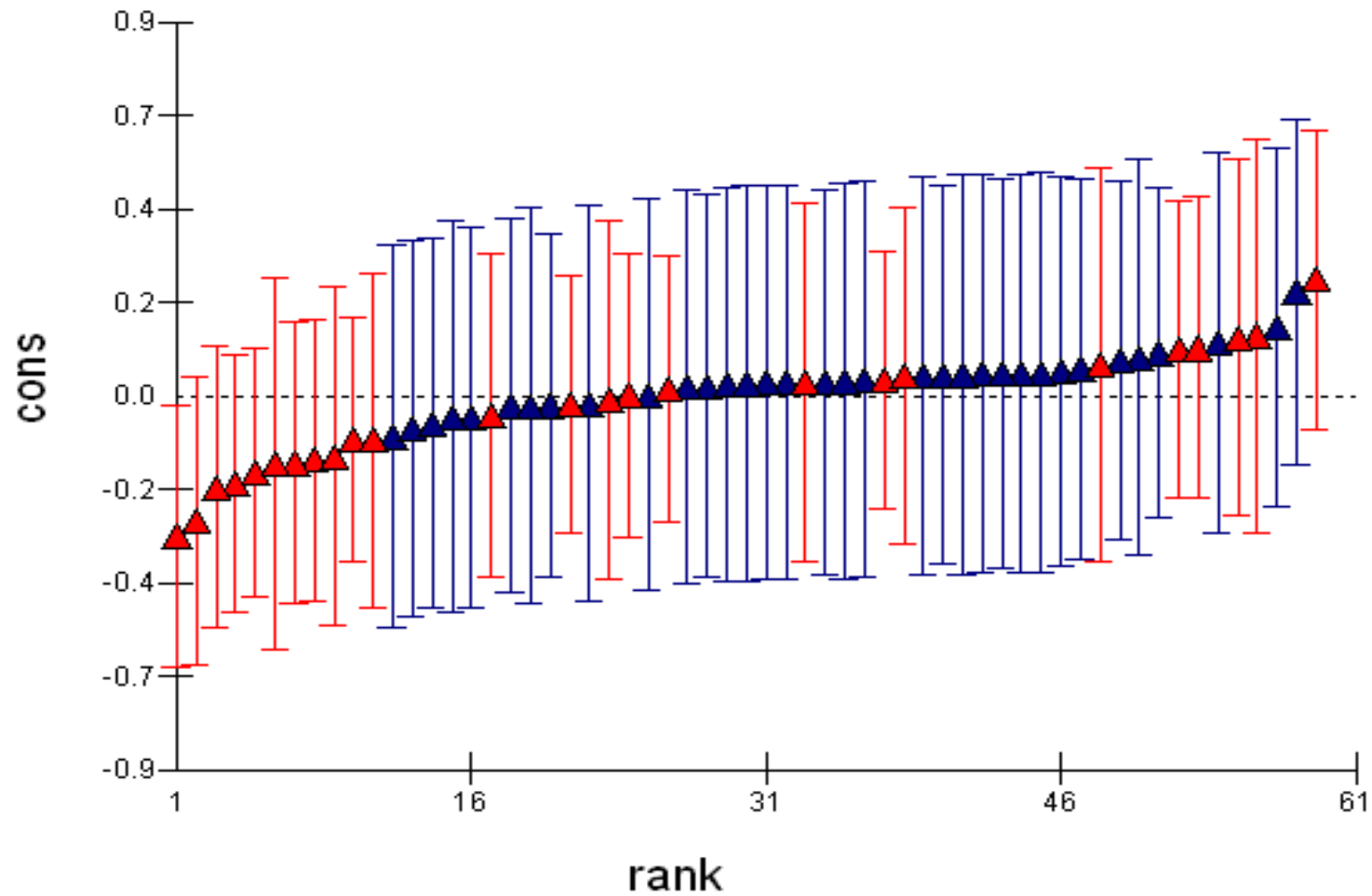
● Trust — Population rate - - 95% CI - - - 99% CI

30 day operative mortality rate %



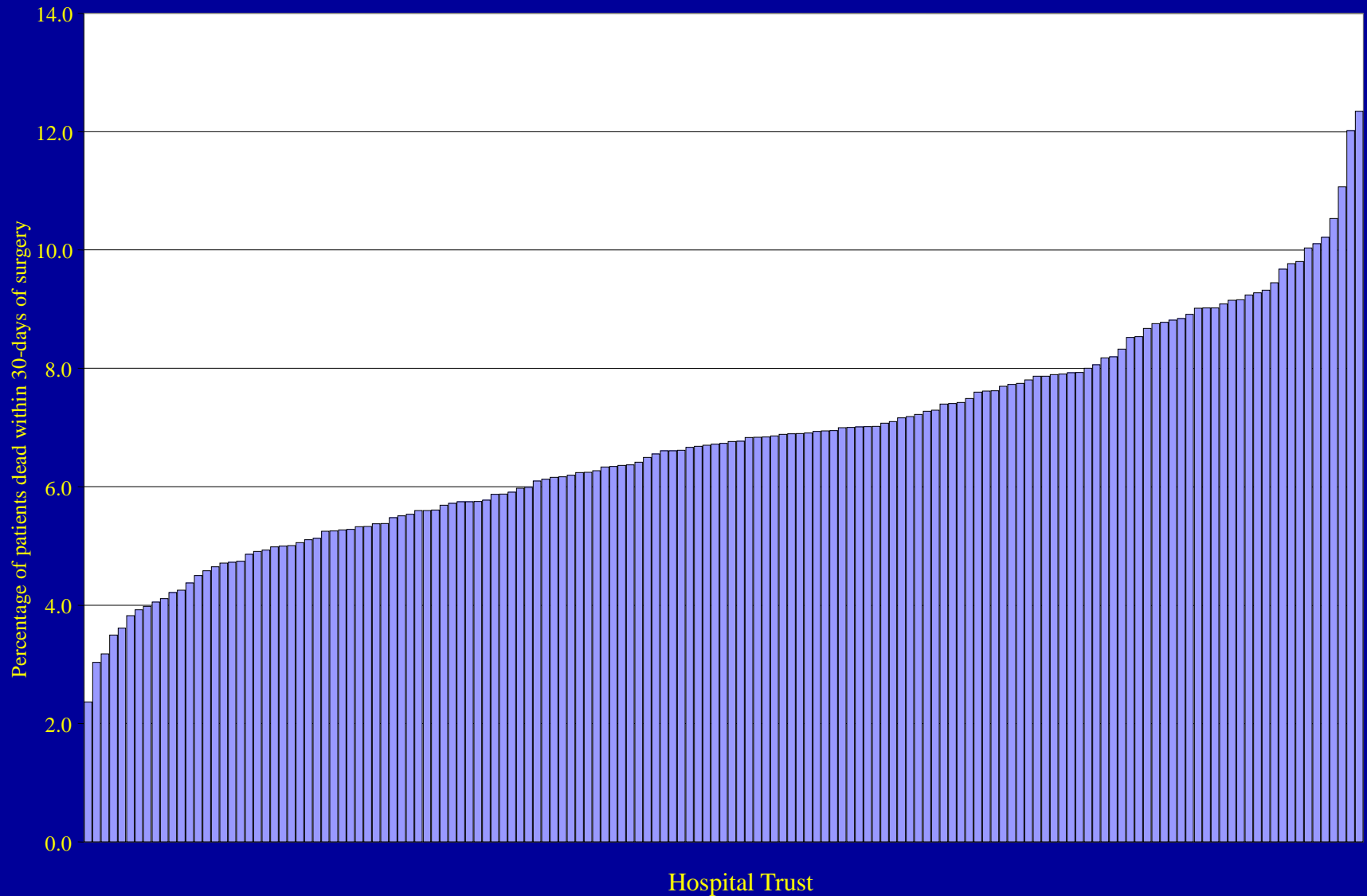
Total workload

Variability in Survival by Surgeon



Courtesy E Morris

Thirty-day Mortality by Trust



Outlying Units

- “Perceived” outlying unit – a unit which, from submitted data and comparative risk adjusted analysis, lies outside of the 99% CI
- “Confirmed” outlying unit – a unit which, on checking the submitted data, remains outside the 99% CI

Open Reporting of Risk-Adjusted Data within NBOCAP

- A prerequisite of central funding from HQIP
- A vital function of audit leading to improvement in outcomes by pursuit of excellence
- Valid outcome reporting should have benefits for patients and providers

Proposed Process for Dealing with Outlying Units (1)

- Perceived outlier identified
- NBOCAP/NCIN contact Trust (CEO, MD, Clinical Lead), Network Lead and ACP (for info)
- Data validation by Trust within one month
- Feedback to NBOCAP/NCIN for review

Perceived Process for Dealing with Outlying Units (2)

- Data mismatch, further discussion between unit and NBOCAP/NCIN
- Confirmed outlying unit
- Trust to commission external review (using RCS IRM)
- ACP to provide assessors for RCS review

Dealing with Outlying Units

- Responsibility to make the process as transparent as possible
- Not a witch-hunt
- The agreed process should provide support for perceived and confirmed outlying units
- Questions ??