



Public Health
England

Systemic Anti Cancer Therapy (SACT)

Brain/CNS SSCRG

Kellie Peters & Raphael Oghagbon

National Disease Registration, CKO



Public Health
England

What is currently available and how do I gain access?

Nationally



Coverage Map

Numbers in Treatment

Top Regimens

Area Team



Data Completeness

Benchmarking

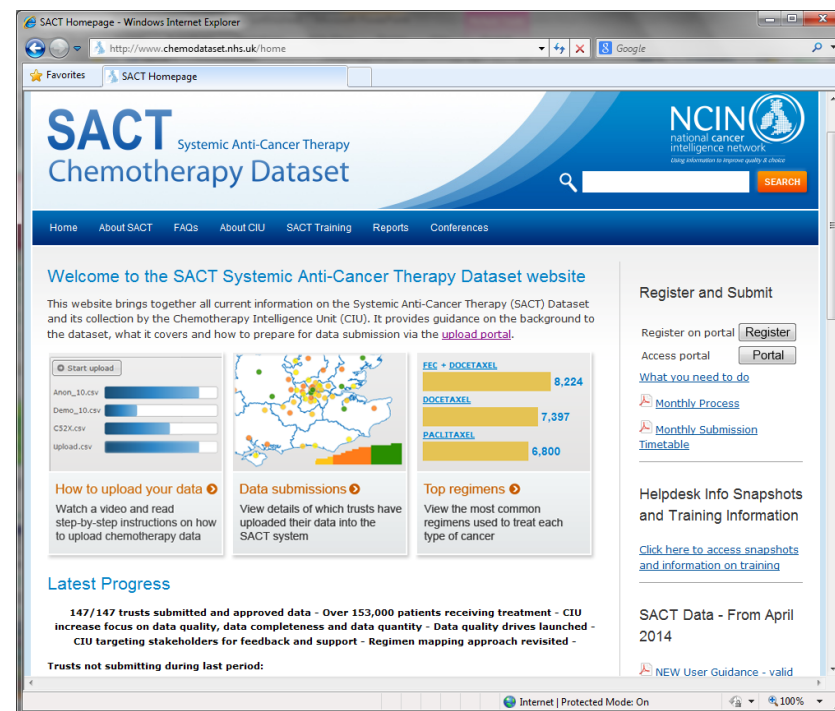
Hospital



Post Chemo Mortality

Data Completeness

Top Regimens



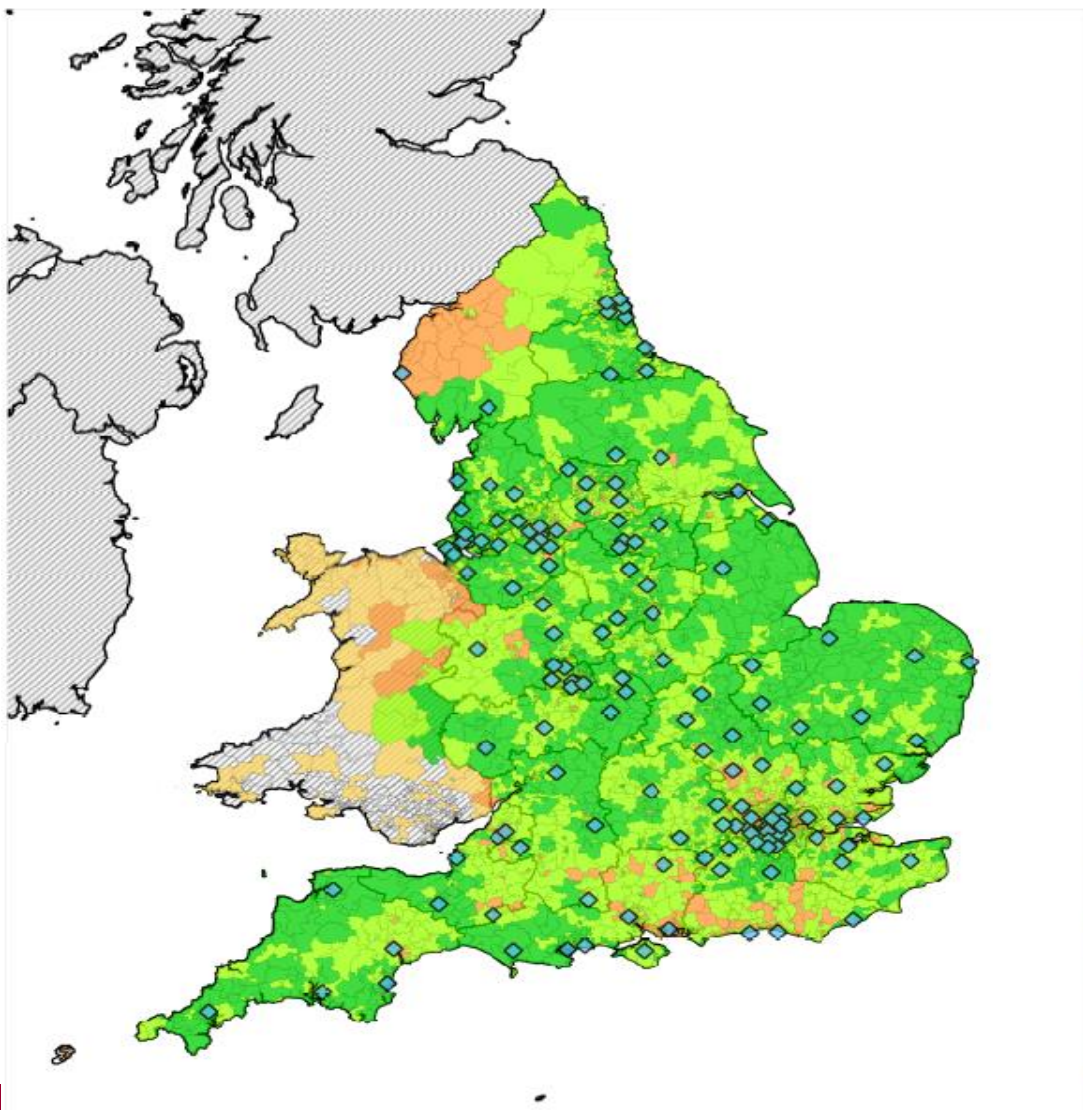
www.chemodataset.nhs.uk



Public Health
England

Coverage Map: A National Perspective

February 2015

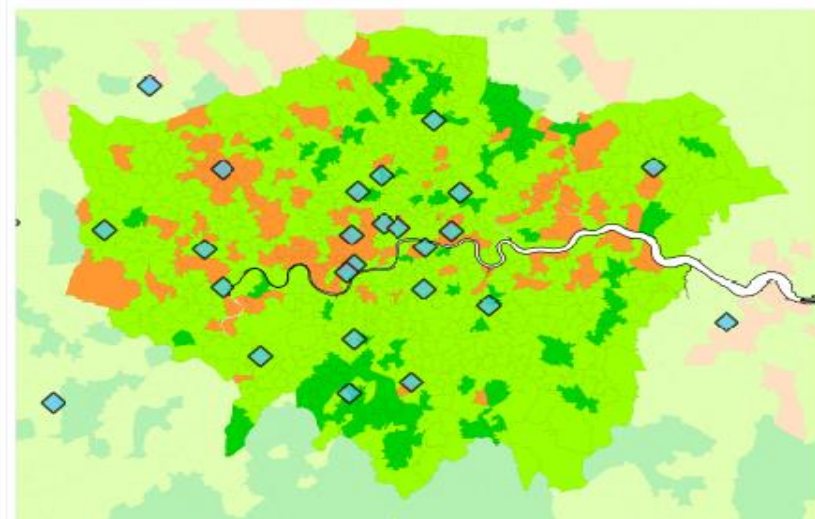


Key Total Patients



Hospital Trust

Submitting data





So... what do the numbers tell us?

	July '13 to June'14	August '13 to July'14
Patients Receiving Drug Treatments	153,348	154,879
Regimens Commenced	250,131	254,162
Cycles Commenced	669,937	681,073

The figures listed above represent the number of patients reported to the CIU through SACT, for whom treatment activity has been submitted for the period covering August 2013 through July 2014 inclusive.



Public Health
England

How good is the data nationally?

SACT data completeness, January 2014 to December 2014

England	
Brain/CNS	

	Increase in completeness since comparison period
	Decrease in completeness since comparison period
	No change in completeness since comparison period
	100% completion (for non-mandatory items)
	Mandatory item (always 100%)

Number of patients
2,605

% NHS Number	% Date of Birth	% Current gender	% Ethnicity	% Patient postcode
100% M	100% M	100%	95%	100%

Number of tumour records
2,749

% GP Practice Code	% GMC Code	% Consultant Specialty	% Primary diagnosis	% Morphology	% Stage of disease at start of programme
88%	89%	91%	100%	54%	21%

Number of regimens
4,594

% Programme number	% Regimen number	% Treatment intent	% Regimen name	% Height at start of regimen	% Weight at start of regimen	% Performance Status at start of regimen
70%	54%	80%	100%	70%	63%	40%

% Comorbidity adjustment	% Date of decision to treat	% Start date of regimen	% Clinical trial	% Chemo radiation	% Number of cycles planned
35%	81%	100%	77%	67%	57%

Number of cycles
9,553

% Cycle number	% Start date of cycle	% Weight at start of cycle	% Performance Status at start of cycle	% OPCS procurement code	% of Cycles with Drug records
100%	96%	60%	38%	67%	89%

Number of drug records
16,849

% Drug name	% Actual dose per administration	% Administration route	% Administration date	% OPCS Delivery code	% Organisation code of drug provider
100%	89%	93%	100%	73%	94%

Number of outcome records
3,119

% Date of Final Treatment	% Regimen modification (dose reduction)	% Regimen modification (time delay)	% Regimen modification (stopped early)	% Regimen outcome summary	% Date of death
23%	57%	21%	44%	6%	6%



How good is my data, compared to hospitals in my area team?

[illegible]



Can I find out how complete my hospital's Brain/CNS data is?

SACT Data Completeness Profile						
Trust All diagnostic groups, activity between 01/09/2013 and 30/09/2013						
Trust Name	Total Patients	Total Tumours	Total Regimens	Total Cycles	Total Drugs	Total Outcomes
NHS Foundation Trust	781	788	805	1,149	8,576	805
Key: * = 100% complete = Better than England average = Worse than England average						
% NHS Number* % Date of Birth* % Gender % Ethnicity % Post Code*						
Total Patients: 781	100.0%	100.0%	100.0%	89.0%	100.0%	
England average:	100.0%	100.0%	98.2%	92.5%	100.0%	
% GP Practice Code % Consultant GMC code % Consultant Speciality % Primary Diagnosis* % Morphology* % Stage						
Total Tumours: 788	100.0%	72.0%	70.9%	100.0%	64.5%	24.2%
England average:	76.6%	87.5%	90.1%	100.0%	46.3%	28.1%
% Programme Number % Regimen Number % Treatment Intent % Height at Regimen Start % Weight at Regimen Start % Performance Status at Regimen Start						
Total Regimens: 805	100.0%	100.0%	96.0%	82.2%	82.2%	99.8%
England average:	54.0%	67.2%	79.9%	55.7%	55.7%	38.5%
% Co-Morbidity Adjustment % Decision To Treat Date % Regimen Start Date* % Clinical Trial % Chemo Radiation % Cycles Planned						
England average:	0.0%	66.8%	100.0%	100.0%	100.0%	100.0%
% Regimen Name* % Regimen matching OPCS 4.6 % Regimen mapped by CIU % Regimen mapped to TRIAL % Regimen mapped to NOT CHEMO						
England average:	100.0%		42.6%	50.0%	7.4%	0.0%
% Cycle Number* % Cycle Start Date % Weight at Cycle Start % Performance Status at Cycle Start % OPCS Procurement Code						
Total Cycles: 1,149	100.0%	99.0%	13.8%	99.7%	69.4%	
England average:	100.0%	95.9%	48.8%	31.5%	48.9%	
% Drug Name % Dose % Route of Administration % Date of Administration % Organisation Code of Drug Provider % OPCS Delivery Code						
Total Drugs: 8,576	100.0%	98.0%	100.0%	100.0%	100.0%	70.9%
England average:	100.0%	94.5%	91.3%	100.0%	94.6%	58.0%
% Final Treatment Date % Regimen Modification Dose Reduction % Regimen Modification Time Delay % Regimen Modification Stopped Early % Regimen Outcome Summary % Date of Death						
Total Outcomes: 805	3.5%	100.0%	100.0%	100.0%	100.0%	0.5%

* Mandatory fields are denoted with an asterisk

Report executed on 12 November 2013. Source: SACT.

SACT Data Quality Profile

Trust
Reported activity taking place between 01/09/2013 and 30/09/2013



1. Morphology completion for critical diagnostic groups

Proportion of patients in each diagnostic group with morphology recorded

Gynae (Ovarian)	Lung	Urology (Testis)
98% 53 out of 54 patients	80% 35 out of 44 patients	80% 4 out of 5 patients

2. Intent of Treatment by diagnostic group

Total number of patients treated between 01/09/2013 and 30/09/2013 with treatment intent recorded.

Percentages are aggregated by diagnostic group. Patients with multiple treatment intent recorded will be double-counted.

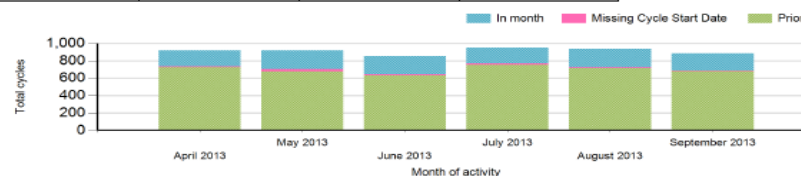
	Adjuvant	Curative	Disease Modification	Neo-adjuvant	Palliative	Not recorded
Brain/CNS	9 (24%)	15 (39%)	0 (0%)	0 (0%)	14 (37%)	0 (0%)
Breast	63 (47%)	7 (5%)	0 (0%)	19 (14%)	39 (29%)	5 (4%)
Gynae	20 (24%)	7 (8%)	0 (0%)	9 (11%)	48 (59%)	1 (1%)
Head and Neck	0 (0%)	8 (80%)	0 (0%)	0 (0%)	2 (20%)	0 (0%)
Leukaemia	2 (4%)	13 (27%)	0 (0%)	0 (0%)	34 (68%)	0 (0%)
Lower GI	24 (35%)	6 (9%)	0 (0%)	2 (3%)	36 (52%)	1 (1%)
Lung	2 (4%)	4 (9%)	0 (0%)	0 (0%)	39 (87%)	0 (0%)
Lymphoma	0 (0%)	36 (55%)	0 (0%)	0 (0%)	29 (45%)	0 (0%)
Miscellaneous	2 (5%)	4 (9%)	0 (0%)	0 (0%)	36 (82%)	2 (5%)
Myeloma	2 (4%)	2 (4%)	0 (0%)	0 (0%)	42 (91%)	0 (0%)
Sarcoma	1 (17%)	0 (0%)	0 (0%)	0 (0%)	5 (83%)	0 (0%)
Skin	0 (0%)	2 (8%)	0 (0%)	0 (0%)	23 (92%)	0 (0%)
Upper GI	2 (5%)	5 (12%)	0 (0%)	1 (2%)	32 (76%)	2 (5%)
Urology	11 (16%)	3 (4%)	0 (0%)	0 (0%)	43 (64%)	10 (15%)

3. Number of cycles reported

Number of cycles reported by cycle start date and corresponding regimen start category ('In month' or 'Prior').

Percentages are aggregated by month of cycle start.

Month of cycle start	Regimen Start Date		
	In month	Missing Cycle Start Date	Prior
April 2013	183 (20%)	10 (1%)	726 (79%)
May 2013	214 (23%)	25 (3%)	679 (74%)
June 2013	206 (24%)	17 (2%)	629 (74%)
July 2013	181 (19%)	15 (2%)	756 (79%)
August 2013	213 (23%)	10 (1%)	714 (76%)
September 2013	195 (22%)	10 (1%)	680 (77%)





Quantifying missing data

Understanding what data are not currently being reported through SACT is important for planning CIU data improvement work

Key themes:

- Coverage of diagnostic groups
- Age groups (Paediatrics, TYA, Adults)
- Route of Administration (IV / Subcut / Intravesical / Oral)



Coverage of diagnostic groups: Comparing SACT data with Cancer Waits

Cancer Waiting Times (CWT) data are reported for all English NHS trusts.

Carolyn Gildea and **Matthew Barclay** from EMKIT provided detailed CWT data for all trusts reporting first and second/subsequent treatments for:

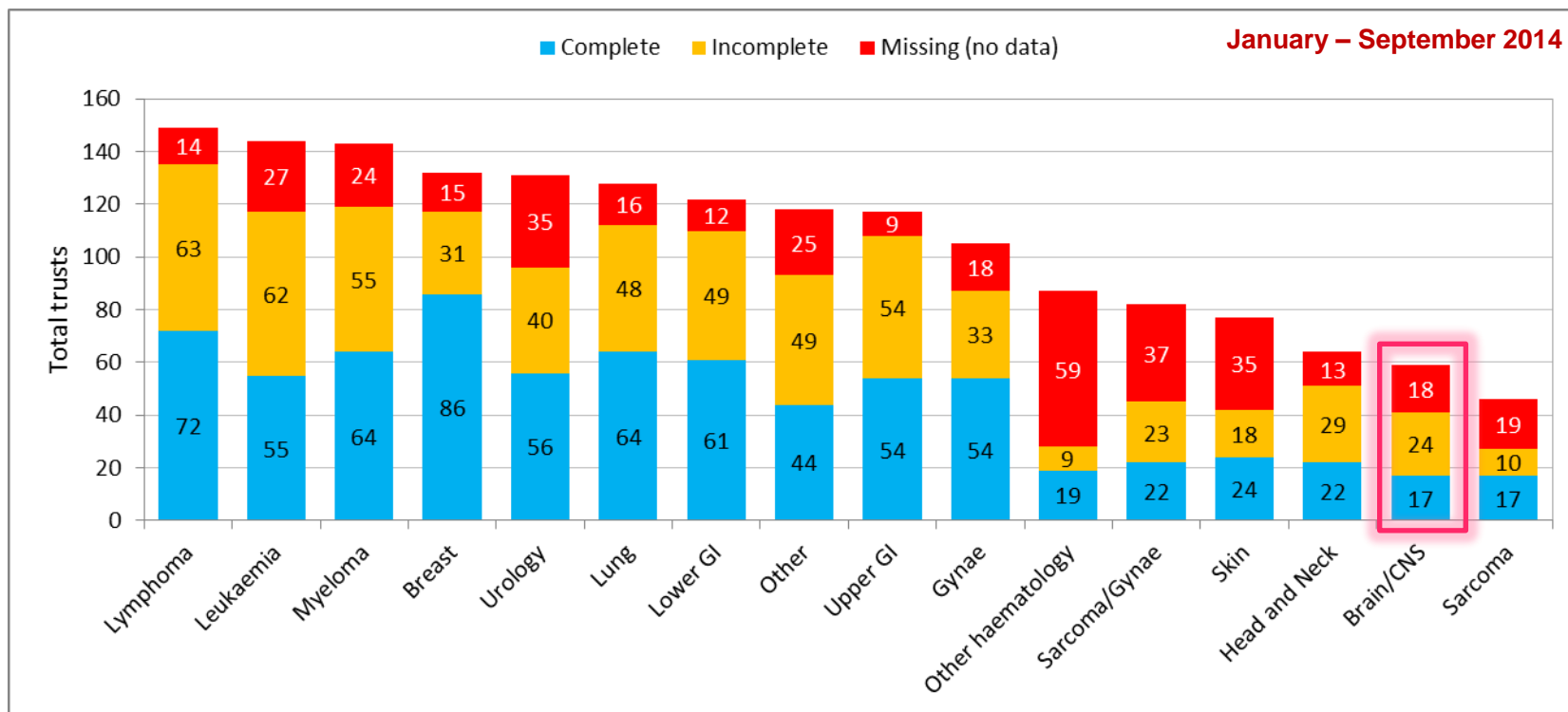
- Chemotherapy
- Hormone therapy
- Chemo-radiotherapy
- Anti-Cancer Drug Regimen (other), or
- Immunotherapy

...all split by diagnostic group

January – September 2014



Coverage of diagnostic groups: Comparing SACT data with Cancer Waits

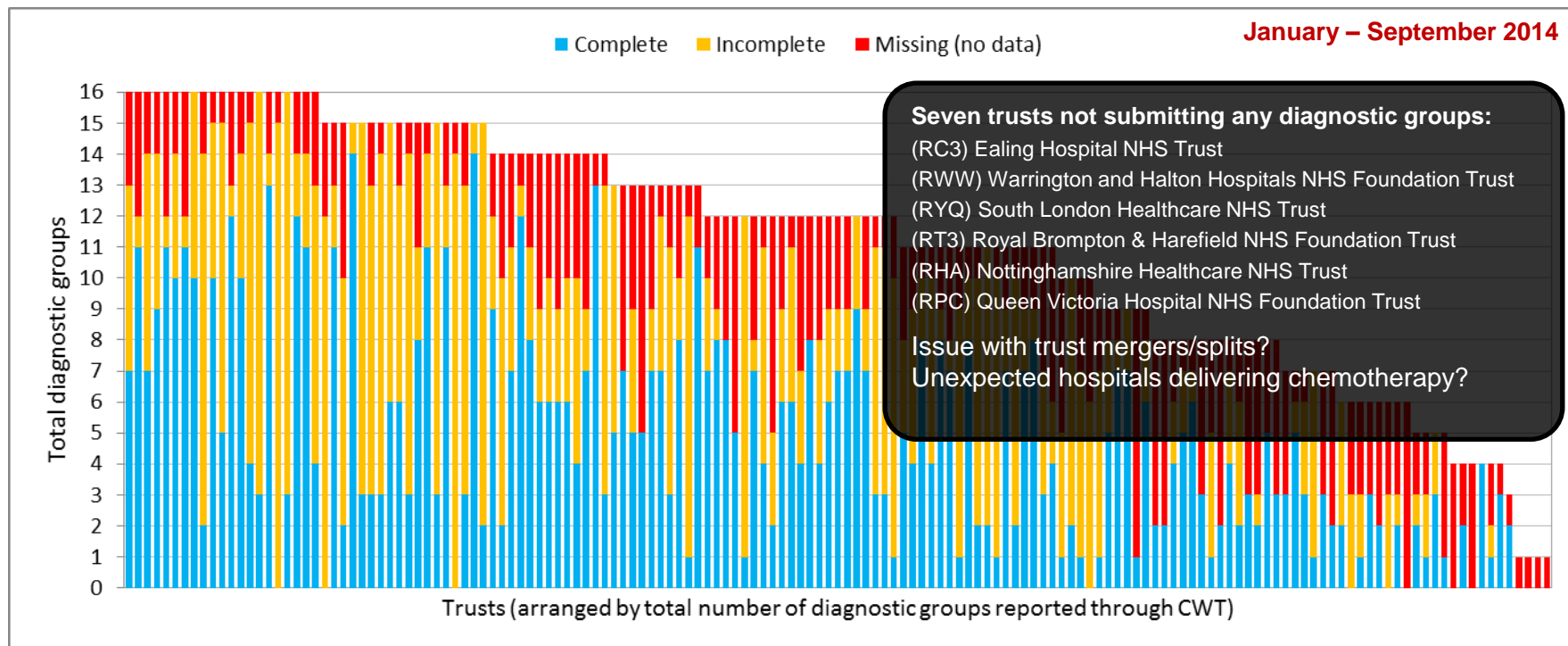


- Complete:** 100% (or more) of expected patients matched between CWT & SACT
- Missing (no data):** no data reported in SACT for groups that had been reported in CWT
- Incomplete:** volume of data reported in SACT does not match that reported in CWT



Public Health
England

Coverage of diagnostic groups: Comparing SACT data with Cancer Waits



- Complete:** 100% (or more) of expected patients matched between CWT & SACT
- Missing (no data):** no data reported in SACT for groups that had been reported in CWT
- Incomplete:** volume of data reported in SACT does not match that reported in CWT



Public Health
England

Coverage of diagnostic groups: Comparing SACT data with Cancer Waits

Trusts	Brain/CNS	Breast	Gynae	Head and Neck	Leukaemia	Lower GI	Lung	Lymphoma	Myeloma	Other	Other haematology	Sarcoma	Sarcoma/Gynae	Skin	Upper GI	Urology
The Christie NHS Foundation Trust	Complete	Complete	Complete	Complete	Complete	Complete	Complete	Complete	Complete	Complete	Complete	Complete	Complete	Complete	Complete	Complete
The Royal Marsden NHS Foundation Trust	Complete	Complete	Complete	Complete	Complete	Complete	Complete	Complete	Complete	Complete	Complete	Complete	Complete	Complete	Complete	Complete
Oxford University Hospitals NHS Trust	Complete	Complete	Complete	Complete	Complete	Complete	Complete	Complete	Complete	Complete	Complete	Complete	Complete	Complete	Complete	Complete
University Hospitals of Leicester NHS Trust	Complete	Complete	Complete	Complete	Complete	Complete	Complete	Complete	Complete	Complete	Complete	Complete	Complete	Complete	Complete	Complete
Cambridge University Hospitals NHS Foundation Trust	Complete	Complete	Complete	Complete	Complete	Complete	Complete	Complete	Complete	Complete	Complete	Complete	Complete	Complete	Complete	Complete
University Hospitals of Morecambe Bay NHS Foundation Trust	Complete	Complete	Complete	Complete	Complete	Complete	Complete	Complete	Complete	Complete	Complete	Complete	Complete	Complete	Complete	Complete
The Clatterbridge Cancer Centre NHS Foundation Trust	Complete	Complete	Complete	Complete	Complete	Complete	Complete	Complete	Complete	Complete	Complete	Complete	Complete	Complete	Complete	Complete
Derby Hospitals NHS Foundation Trust	Complete	Complete	Complete	Complete	Complete	Complete	Complete	Complete	Complete	Complete	Complete	Complete	Complete	Complete	Complete	Complete
Guy's and St Thomas' NHS Foundation Trust	Complete	Complete	Complete	Complete	Complete	Complete	Complete	Complete	Complete	Complete	Complete	Complete	Complete	Complete	Complete	Complete
Northampton General Hospital NHS Trust	Complete	Complete	Complete	Complete	Complete	Complete	Complete	Complete	Complete	Complete	Complete	Complete	Complete	Complete	Complete	Complete
University College London Hospitals NHS Foundation Trust	Complete	Complete	Complete	Complete	Complete	Complete	Complete	Complete	Complete	Complete	Complete	Complete	Complete	Complete	Complete	Complete
Leeds Teaching Hospitals NHS Trust	Complete	Complete	Complete	Complete	Complete	Complete	Complete	Complete	Complete	Complete	Complete	Complete	Complete	Complete	Complete	Complete
Brighton and Sussex University Hospitals NHS Trust	Complete	Complete	Complete	Complete	Complete	Complete	Complete	Complete	Complete	Complete	Complete	Complete	Complete	Complete	Complete	Complete
East Sussex Healthcare NHS Trust	Complete	Complete	Complete	Complete	Complete	Complete	Complete	Complete	Complete	Complete	Complete	Complete	Complete	Complete	Complete	Complete
The Whittington Hospital NHS Trust	Complete	Complete	Complete	Complete	Complete	Complete	Complete	Complete	Complete	Complete	Complete	Complete	Complete	Complete	Complete	Complete
North Cumbria University Hospitals NHS Trust	Complete	Complete	Complete	Complete	Complete	Complete	Complete	Complete	Complete	Complete	Complete	Complete	Complete	Complete	Complete	Complete
Luton and Dunstable University Hospital NHS Foundation Trust	Complete	Complete	Complete	Complete	Complete	Complete	Complete	Complete	Complete	Complete	Complete	Complete	Complete	Complete	Complete	Complete
King's College Hospital NHS Foundation Trust	Complete	Complete	Complete	Complete	Complete	Complete	Complete	Complete	Complete	Complete	Complete	Complete	Complete	Complete	Complete	Complete
Homerton University Hospital NHS Foundation Trust	Complete	Complete	Complete	Complete	Complete	Complete	Complete	Complete	Complete	Complete	Complete	Complete	Complete	Complete	Complete	Complete

Complete: 100% (or more) of expected patients matched between CWT & SACT
 Missing (no data): no data reported in SACT for groups that had been reported in CWT
 Incomplete: volume of data reported in SACT does not match that reported in CWT



Coverage of Brain/CNS diagnostic group: Comparing SACT data with Cancer Waits

University Hospital of North Staffordshire NHS Trust	Complete	Central Manchester University Hospitals NHS Foundation Trust	Complete
Sheffield Teaching Hospitals NHS Foundation Trust	Complete	The Christie NHS Foundation Trust	Complete
Nottingham University Hospitals NHS Trust	Complete	Derby Hospitals NHS Foundation Trust	Complete
Alder Hey Children's NHS Foundation Trust	Complete	The Royal Marsden NHS Foundation Trust	Complete
The Clatterbridge Cancer Centre NHS Foundation Trust	Complete	East and North Hertfordshire NHS Trust	Complete
Barts Health NHS Trust	Complete	University Hospitals Birmingham NHS Foundation Trust	Complete
Mid Essex Hospital Services NHS Trust	Complete	Great Ormond Street Hospital for Children NHS Foundation Trust	Complete
Cambridge University Hospitals NHS Foundation Trust	Complete	University Hospitals of Leicester NHS Trust	Complete
Poole Hospital NHS Foundation Trust	Complete		

Maidstone and Tunbridge Wells NHS Trust	Incomplete	The Newcastle upon Tyne Hospitals NHS Foundation Trust	Incomplete
South Tees Hospitals NHS Foundation Trust	Incomplete	Royal Devon and Exeter NHS Foundation Trust	Incomplete
Birmingham Children's Hospital NHS Foundation Trust	Incomplete	The Royal Wolverhampton NHS Trust	Incomplete
Great Western Hospitals NHS Foundation Trust	Incomplete	Royal Liverpool and Broadgreen University Hospitals NHS Trust	Incomplete
Leeds Teaching Hospitals NHS Trust	Incomplete	University College London Hospitals NHS Foundation Trust	Incomplete
University Hospitals Bristol NHS Foundation Trust	Incomplete	Royal Surrey County Hospital NHS Foundation Trust	Incomplete
United Lincolnshire Hospitals NHS Trust	Incomplete	University Hospital Southampton NHS Foundation Trust	Incomplete
Guy's and St Thomas' NHS Foundation Trust	Incomplete	Hull and East Yorkshire Hospitals NHS Trust	Incomplete
Norfolk and Norwich University Hospitals NHS Foundation Trust	Incomplete	North Cumbria University Hospitals NHS Trust	Incomplete
Royal Berkshire NHS Foundation Trust	Incomplete	Shrewsbury and Telford Hospital NHS Trust	Incomplete
Lancashire Teaching Hospitals NHS Foundation Trust	Incomplete	Plymouth Hospitals NHS Trust	Incomplete
Royal Cornwall Hospitals NHS Trust	Incomplete	Northampton General Hospital NHS Trust	Incomplete

Complete: 100% (or more) of expected patients matched between CWT & SACT

Missing (no data): no data reported in SACT for groups that had been reported in CWT

Incomplete: volume of data reported in SACT does not match that reported in CWT



Coverage of Brain/CNS diagnostic group: Comparing SACT data with Cancer Waits

The Princess Alexandra Hospital NHS Trust	Hinchingbrooke Health Care NHS Trust	The Whittington Hospital NHS Trust
Barnsley Hospital NHS Foundation Trust	Isle of Wight NHS Trust	North West London Hospitals NHS Trust
University Hospitals of Morecambe Bay NHS Foundation Trust	Pennine Acute Hospitals NHS Trust	University Hospital of South Manchester NHS Foundation Trust
Bradford Teaching Hospitals NHS Foundation Trust	St George's Healthcare NHS Trust	Aintree University Hospital NHS Foundation Trust
Surrey and Sussex Healthcare NHS Trust	Peterborough and Stamford Hospitals NHS Foundation Trust	James Paget University Hospitals NHS Foundation Trust
Lewisham and Greenwich NHS Trust	Stockport NHS Foundation Trust	Northern Devon Healthcare NHS Trust
East Lancashire Hospitals NHS Trust	Barnet and Chase Farm Hospitals NHS Trust	Walsall Healthcare NHS Trust
Luton and Dunstable University Hospital NHS Foundation Trust	Tameside Hospital NHS Foundation Trust	Northern Lincolnshire and Goole NHS Foundation Trust
Weston Area Health NHS Trust	Chelsea and Westminster Hospital NHS Foundation Trust	West Suffolk NHS Foundation Trust
Hampshire Hospitals NHS Foundation Trust	Doncaster and Bassetlaw Hospitals NHS Foundation Trust	Northumbria Healthcare NHS Foundation Trust
Southport and Ormskirk Hospital NHS Trust	Portsmouth Hospitals NHS Trust	King's College Hospital NHS Foundation Trust
Medway NHS Foundation Trust	The Dudley Group NHS Foundation Trust	Basildon and Thurrock University Hospitals NHS Foundation Trust
Dorset County Hospital NHS Foundation Trust	Queen Victoria Hospital NHS Foundation Trust	York Teaching Hospital NHS Foundation Trust
Mid Cheshire Hospitals NHS Foundation Trust	Ealing Hospital NHS Trust	Nottinghamshire Healthcare NHS Trust
Airedale NHS Foundation Trust	Chesterfield Royal Hospital NHS Foundation Trust	South Tyneside NHS Foundation Trust
Harrogate and District NHS Foundation Trust	The Queen Elizabeth Hospital, King's Lynn, NHS Foundation Trust	Salisbury NHS Foundation Trust
Frimley Park Hospital NHS Foundation Trust	Royal Brompton & Harefield NHS Foundation Trust	Warrington and Halton Hospitals NHS Foundation Trust
Mid Staffordshire NHS Foundation Trust	The Royal Bournemouth and Christchurch Hospitals NHS Foundation Trust	Sandwell and West Birmingham Hospitals NHS Trust
West Hertfordshire Hospitals NHS Trust	City Hospitals Sunderland NHS Foundation Trust	Kettering General Hospital NHS Foundation Trust
Mid Yorkshire Hospitals NHS Trust	East Cheshire NHS Trust	Bedford Hospital NHS Trust
Wye Valley NHS Trust	Homerton University Hospital NHS Foundation Trust	Western Sussex Hospitals NHS Foundation Trust
Heart of England NHS Foundation Trust	East Kent Hospitals University NHS Foundation Trust	Croydon Health Services NHS Trust
South Warwickshire NHS Foundation Trust	Royal Free London NHS Foundation Trust	Wirral University Teaching Hospital NHS Foundation Trust
Burton Hospitals NHS Foundation Trust	East Sussex Healthcare NHS Trust	Sherwood Forest Hospitals NHS Foundation Trust
St Helens and Knowsley Hospitals NHS Trust	Countess of Chester Hospital NHS Foundation Trust	Wrightington, Wigan and Leigh NHS Foundation Trust
North Bristol NHS Trust	Epsom and St Helier University Hospitals NHS Trust	Dartford and Gravesham NHS Trust
Taunton and Somerset NHS Foundation Trust	County Durham and Darlington NHS Foundation Trust	Kingston Hospital NHS Foundation Trust
Calderdale and Huddersfield NHS Foundation Trust	Gateshead Health NHS Foundation Trust	Ashford and St Peter's Hospitals NHS Foundation Trust
The Hillingdon Hospitals NHS Foundation Trust	Blackpool Teaching Hospitals NHS Foundation Trust	Bolton NHS Foundation Trust
North Middlesex University Hospital NHS Trust	George Eliot Hospital NHS Trust	
The Rotherham NHS Foundation Trust	Salford Royal NHS Foundation Trust	
North Tees and Hartlepool NHS Foundation Trust	South London Healthcare NHS Trust	

- **Complete:** 100% (or more) of expected patients matched between CWT & SACT
- **Missing (no data):** no data reported in SACT for groups that had been reported in CWT
- **Incomplete:** volume of data reported in SACT does not match that reported in CWT



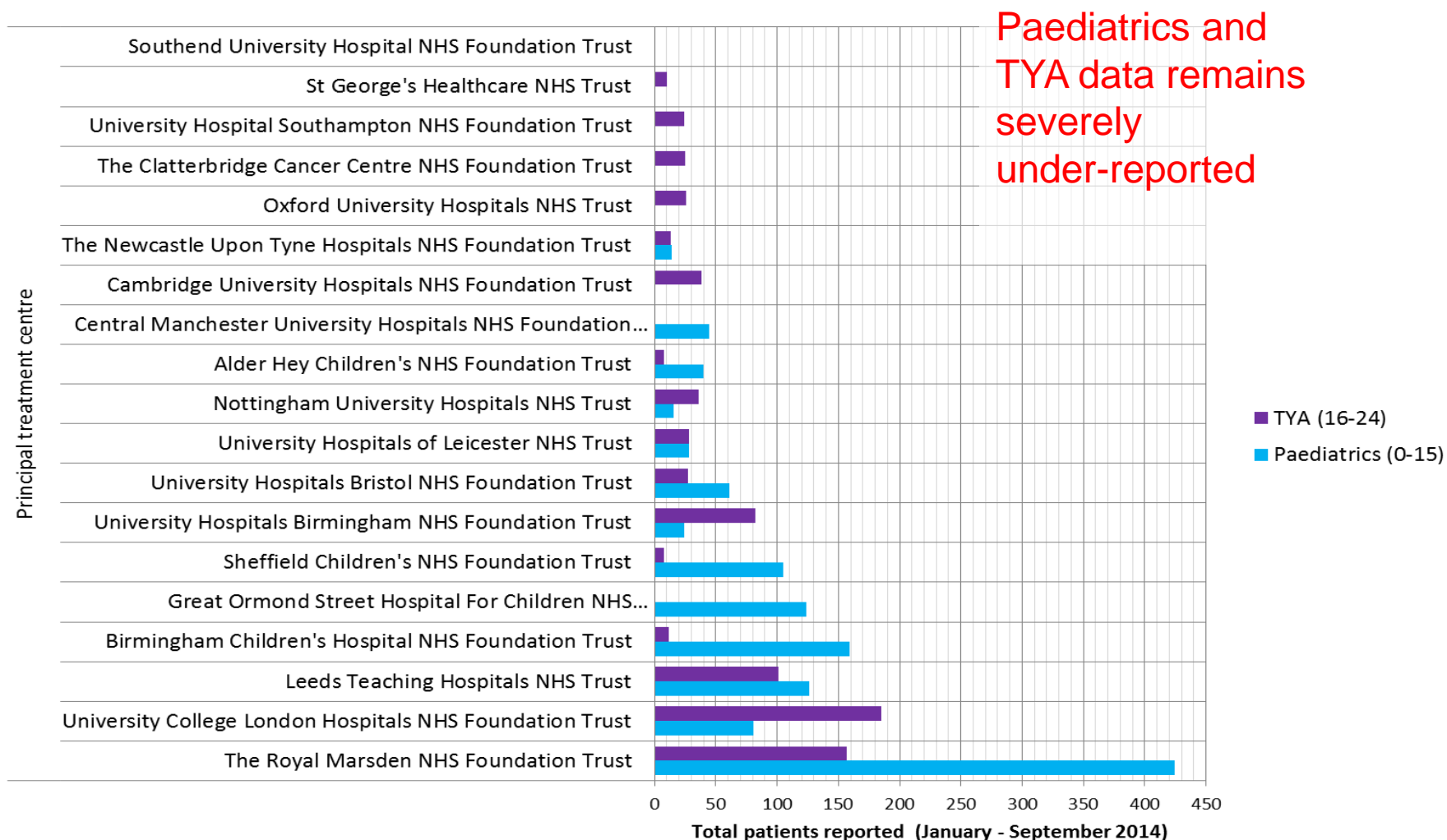
Coverage of Brain/CNS diagnostic group: Comparing SACT data with Cancer Waits

List of trusts that are not expected to submit chemotherapy activity (based on CWT data):

West Middlesex University Hospital NHS Trust	Brighton and Sussex University Hospitals NHS Trust
Sheffield Children's NHS Foundation Trust	South Devon Healthcare NHS Foundation Trust
Colchester Hospital University NHS Foundation Trust	Buckinghamshire Healthcare NHS Trust
Heatherwood and Wexham Park Hospitals NHS Foundation Trust	University Hospitals Coventry and Warwickshire NHS Trust
Southend University Hospital NHS Foundation Trust	Milton Keynes Hospital NHS Foundation Trust
Imperial College Healthcare NHS Trust	Worcestershire Acute Hospitals NHS Trust
Yeovil District Hospital NHS Foundation Trust	Barking, Havering and Redbridge University Hospitals NHS Trust
Ipswich Hospital NHS Trust	Oxford University Hospitals NHS Trust
Gloucestershire Hospitals NHS Foundation Trust	Royal United Hospital Bath NHS Trust



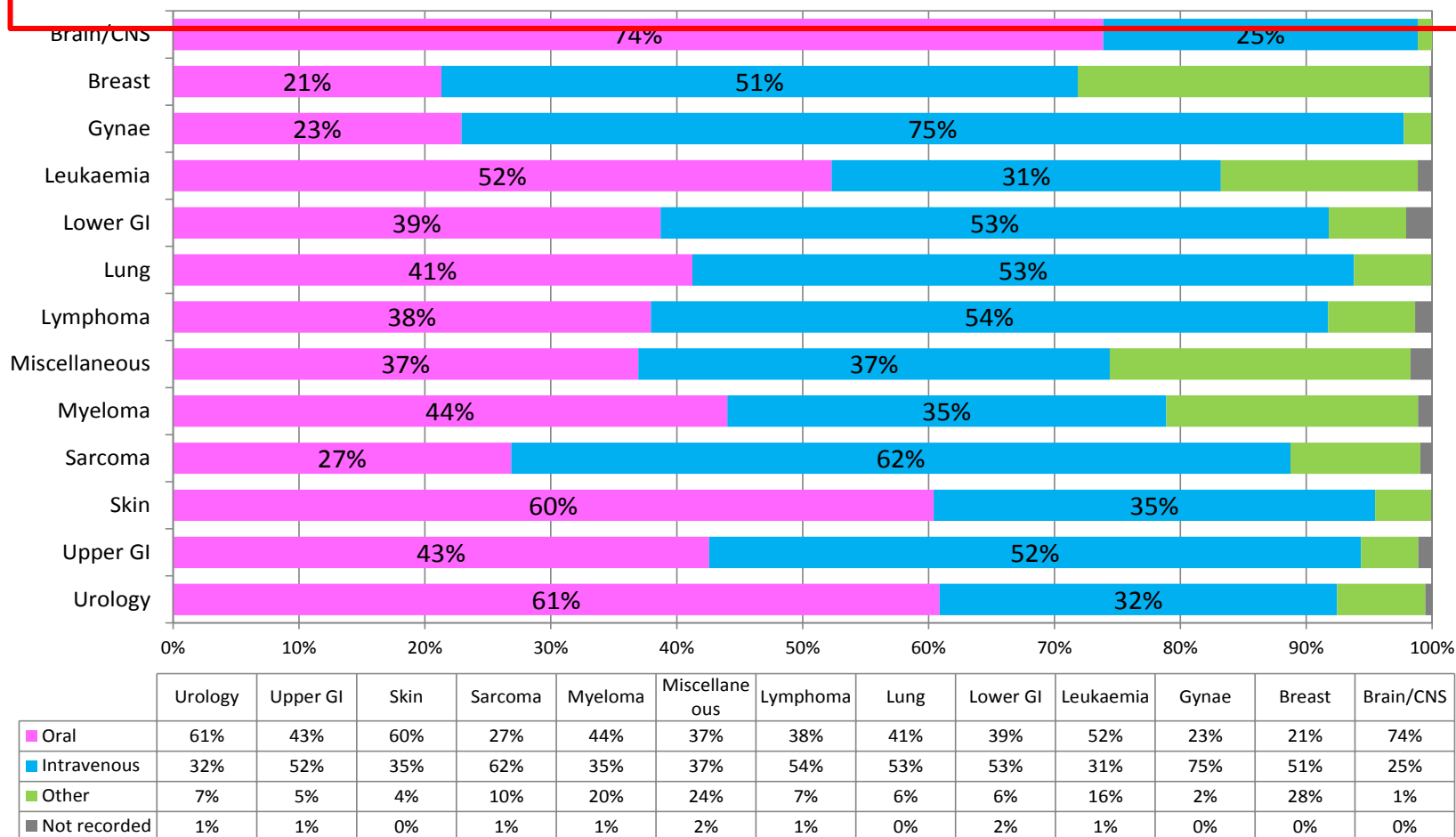
Paediatrics, Teenagers & Young Adults





Route of administration: Oral vs. IV

Route distribution for main disease groups based on top 10 trusts by volume of data

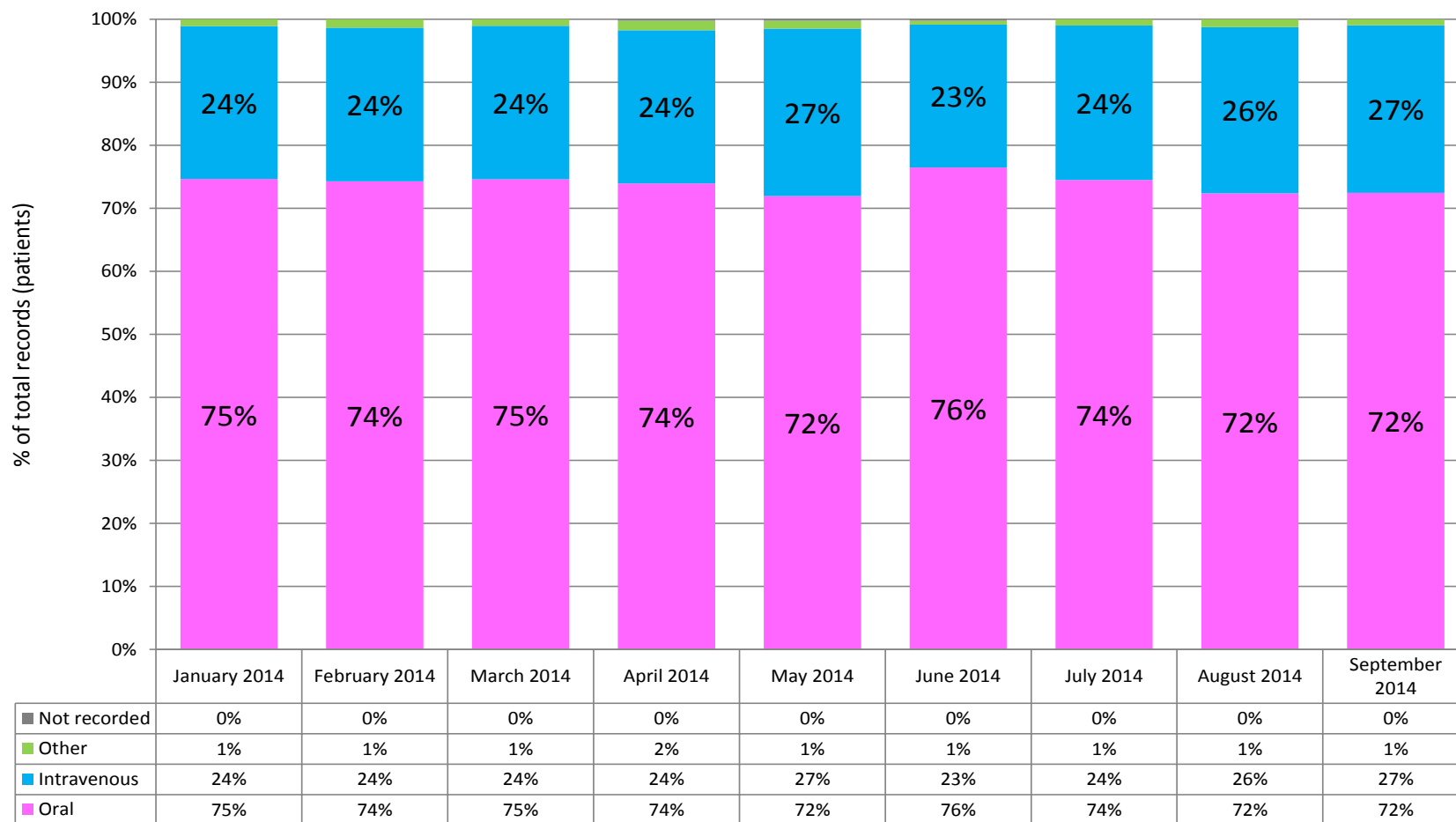


*For trusts regularly submitting data on route of administration



Route of administration: Oral vs. IV

Route distribution for top 10 trusts by volume of Brain/CNS data



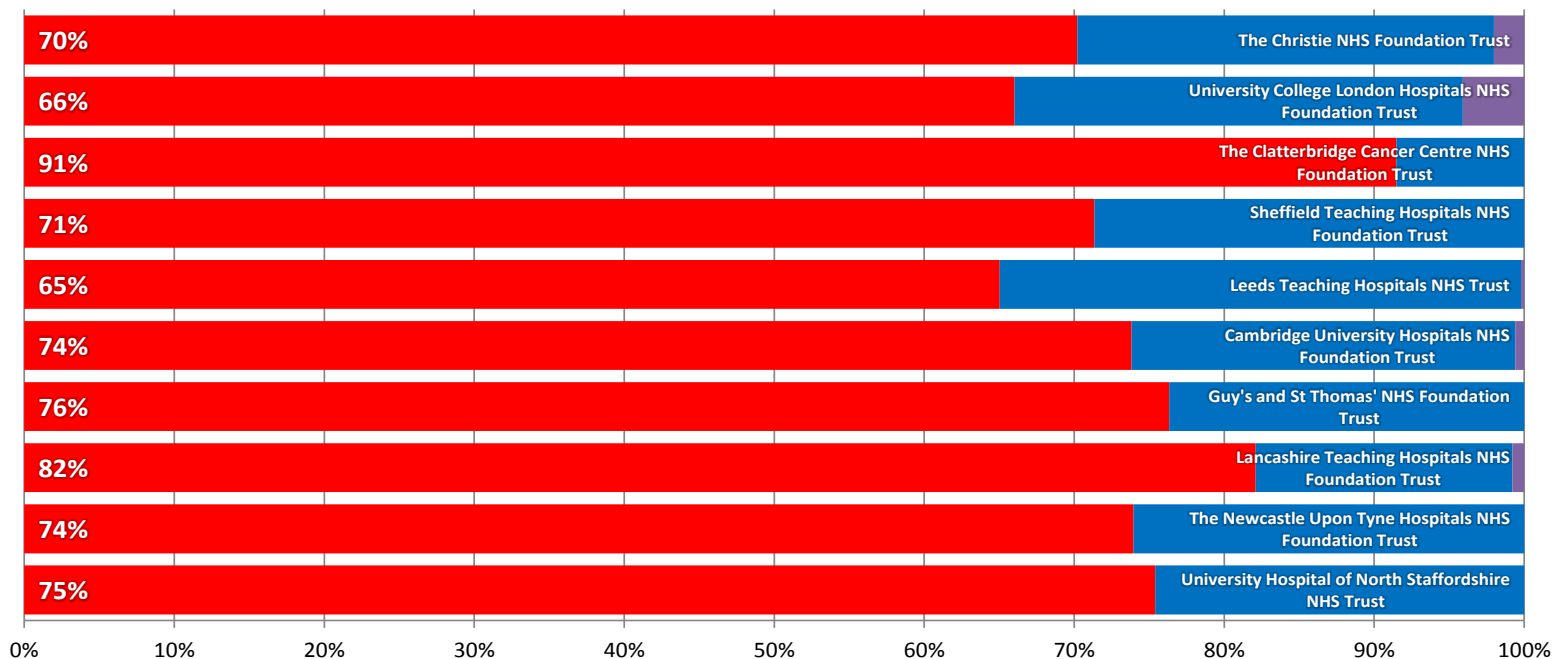
Month of cycle start

*For trusts regularly submitting data on route of administration



Route of administration: Oral vs. IV

Route distribution for top 10 trusts by volume of Brain/CNS data

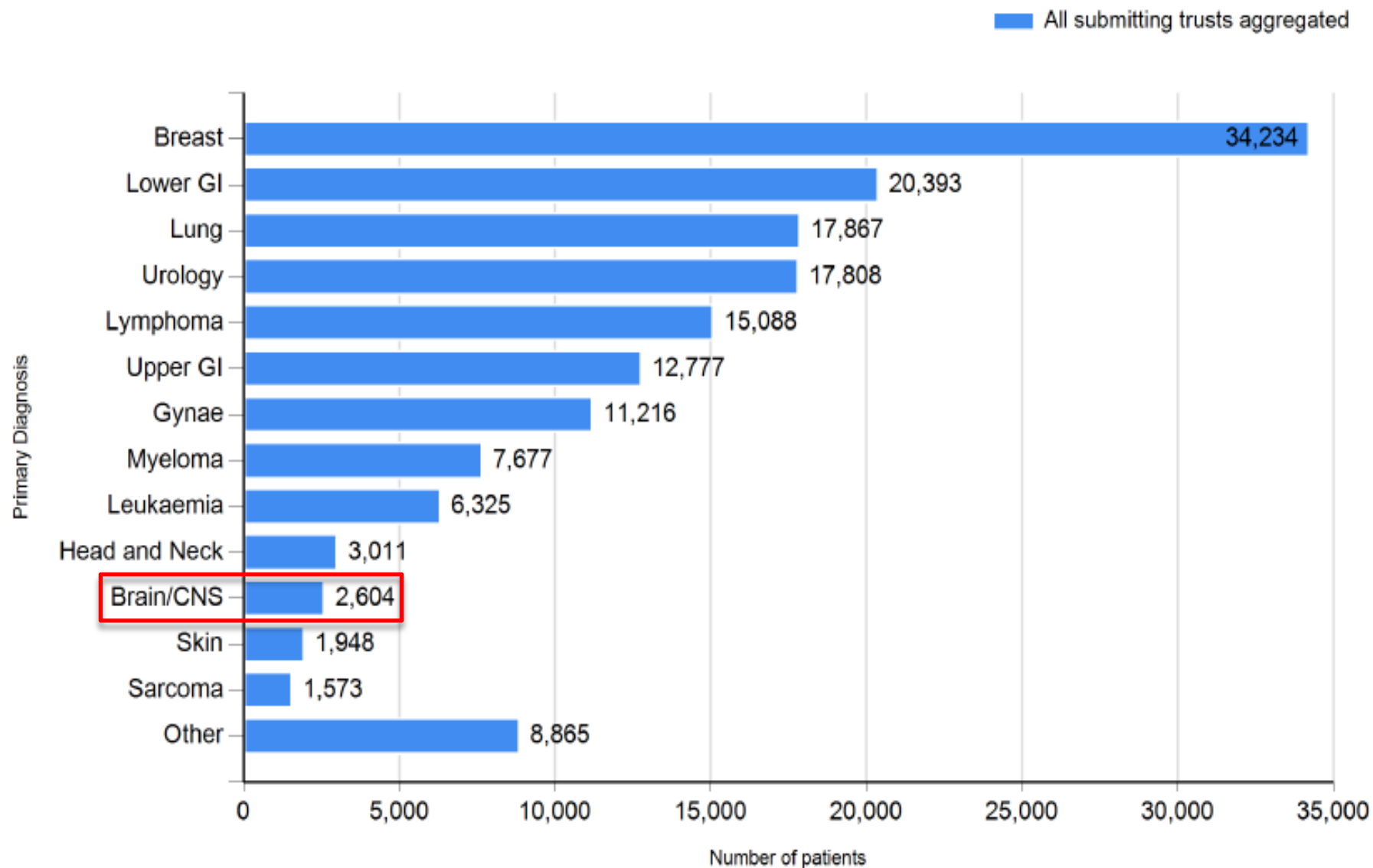


	University Hospital of North Staffordshire NHS Trust	The Newcastle Upon Tyne Hospitals NHS Foundation Trust	Lancashire Teaching Hospitals NHS Foundation Trust	Guy's and St Thomas' NHS Foundation Trust	Cambridge University Hospitals NHS Foundation Trust	Leeds Teaching Hospitals NHS Trust	Sheffield Teaching Hospitals NHS Foundation Trust	The Clatterbridge Cancer Centre NHS Foundation Trust	University College London Hospitals NHS Foundation Trust	The Christie NHS Foundation Trust
Oral	75%	74%	82%	76%	74%	65%	71%	91%	66%	70%
Intravenous	25%	26%	17%	24%	26%	35%	29%	9%	30%	28%
Other	0%	0%	1%	0%	1%	0%	0%	0%	4%	2%
Not recorded	0%	0%	0%	0%	0%	0%	0%	0%	0%	0%

Number of Patients by Diagnostic Group

All submitting trusts aggregated

Data received for October 2013 - September 2014. Patients aged 16 and over



Top Regimens by Diagnostic Group

Brain/CNS

All treatment intent

ICD10: C47, C69-C72

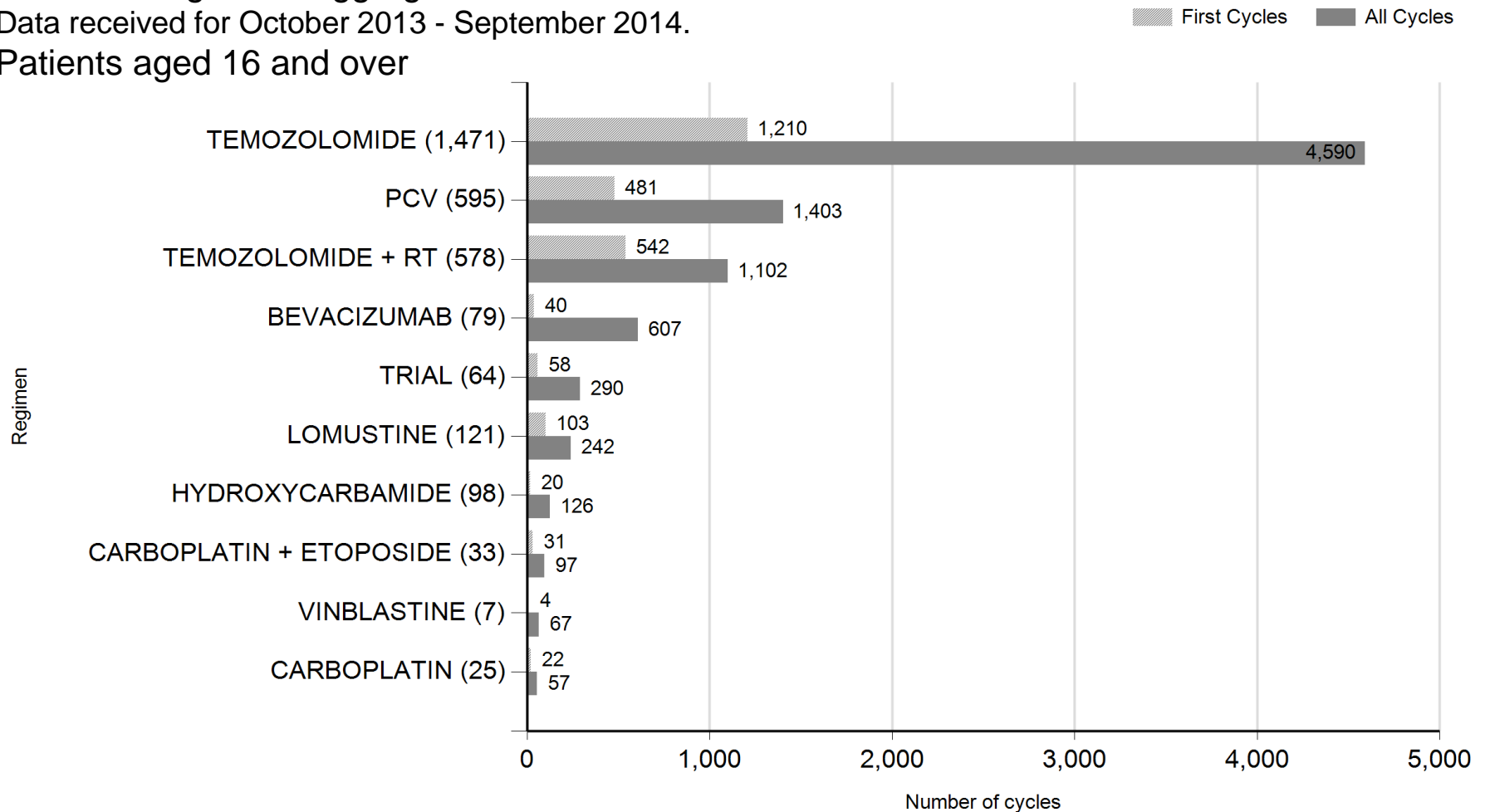
All submitting trusts aggregated

Data received for October 2013 - September 2014.

Patients aged 16 and over

These reports are available at a provider level

There are in excess of 100 regimens for this disease group



Top Regimens by Diagnostic Group

Brain/CNS

ICD10: C47, C69-C72

All submitting trusts aggregated

Data received for October 2013 - September 2014. Patients aged 16 and over

Table: List of top regimens

Regimen	Total Patients	First Cycles	Total Cycles
TEMOZOLOMIDE	1,471	1,210	4,590
PCV	595	481	1,403
TEMOZOLOMIDE + RT	578	542	1,102
BEVACIZUMAB	79	40	607
TRIAL	64	58	290
LOMUSTINE	121	103	242
HYDROXYCARBAMIDE	98	20	126
CARBOPLATIN + ETOPOSIDE	33	31	97
VINBLASTINE	7	4	67
CARBOPLATIN	25	22	57
<i>Other (109 regimens, including 2 other TRIAL regimen and 27 unrecognised)</i>	313	267	879



Public Health
England

Post Chemotherapy Mortality Analysis

- ✓ From **25th July 2014** all NHS providers of chemotherapy in England have been able to access their 30/60/90-day post chemotherapy mortality analysis through the **secure online portal**.
- ✓ This analysis is available by tumour group and will provide a national comparison.
- ✓ **It is essential that clinical teams** within provider organisations check the accuracy of their data and contact the team in Oxford where there are **any possible discrepancies**.
- ✓ A letter to Medical Directors and Lead Chemotherapy Consultants has been sent out raising awareness of these reports.



Post Chemotherapy Mortality Analysis

(2)

Trust: Diagnostic Group: [View Report](#)

Intent of treatment: Show regimens with no deaths?:

Sort by: Start Date:

End Date:

Navigation: 2 of 2 | 100% | Find | Next

Post-chemotherapy mortality analysis (January 2013 - December 2013)

For demonstration purposes only

Source: SACT, ENCORE (CAS) and Personal Demographics Service (PDS), accessed 15th May 2014

	Total patients	Deaths 0-30 days	Death 0-60 days	Deaths 0-90 day	Total deaths
NHS Foundation Trust	3,766	223	502	752	1,593
Brain/CNS	72	2	9	16	45
Curative	15	0	2	3	11
TEMOZOLOMIDE + RT	13	0	2	3	10
PCV	2	0	0	0	1
Palliative	10	0	0	1	6
TEMOZOLOMIDE + RT	5	0	0	0	3
SUNITINIB	1	0	0	0	1
PCV	2	0	0	0	1
CARBOPLATIN + PEMETREXED	1	0	0	1	1
Intent of Treatment not recorded	47	2	7	12	28
PCV	32	2	7	12	26
BEP	1	0	0	0	1
TEMOZOLOMIDE + RT	7	0	0	0	1



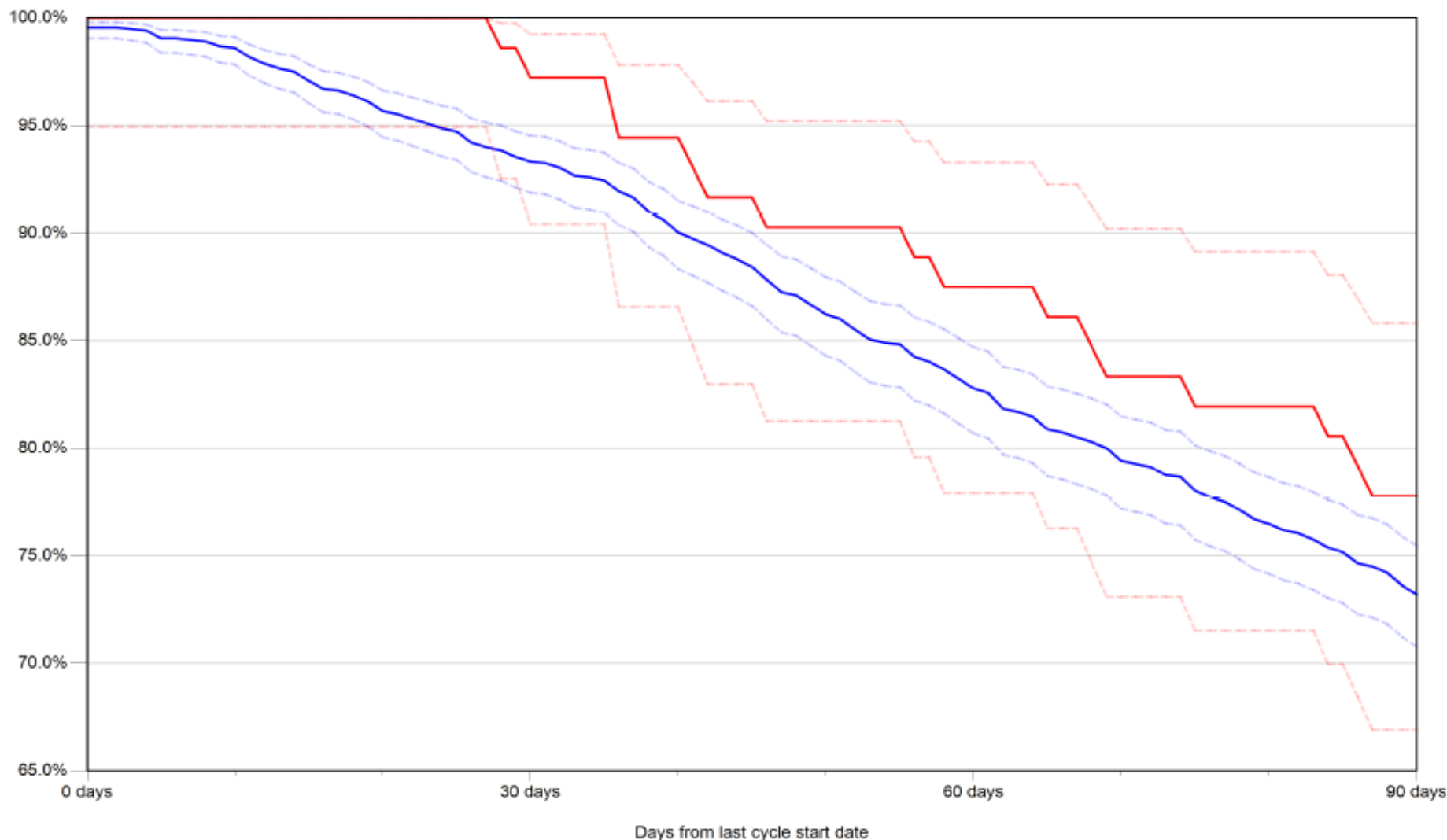
Public Health
England

Post Chemotherapy Survival Analysis

Brain/CNS all treatment intents

— All submitting trusts aggregated — NHS Foundation Trust

For demonstration purposes only





Public Health
England

Online Regimen Mapping Tool Launched

- ✓ Providers now have the responsibility to map their local regimen names to nationally recognised regimen nomenclature using the new mapping tool.
- ✓ The tool was tested by members of the SACT User Group, before being launched on the upload portal.
- ✓ Using feedback, the written guidelines and step by step guide have been produced in conjunction with senior pharmacists who are supporting the team.
- ✓ We currently have over 50 registered users with the new role of “Regimen mapping”



Public Health
England

We want to identify best practice across England and share it!

- **Have You:**

- Improved SACT data quality by introducing new processes?
- Used your local SACT data to improve services, or your understanding of chemotherapy?
- Shared all SACT reports (Data Quality, Top Regimen, Benchmarking and the mortality reports) with your pharmacy and oncology teams members in order to improve understanding SACT and its purpose?

If yes, please contact us at CIU@phe.gov.uk!



Public Health
England

Improving Stakeholder Engagement

Members of the CIU team will be attending the following meetings:

- NHS England Area Team Pharmacist Meeting
- NHS England Chemotherapy Clinical Reference Group
- Chemotherapy Clinical Information Group
- NCIN Site Specific Clinical Reference Groups (SSCRG)
e.g. Breast meeting

Would you like to know more about SACT? Please contact the team, we are always happy to discuss the project or meet with you.

E-mail: CIU@phe.gov.uk