



Public Health
England

Systemic Anti Cancer Therapy (SACT)

CTYA SSCRG

Kellie Peters



Public Health
England

What is currently available and how do I gain access?

Nationally



Coverage Map

Numbers in Treatment

Top Regimens

Area Team



Data Completeness

Benchmarking

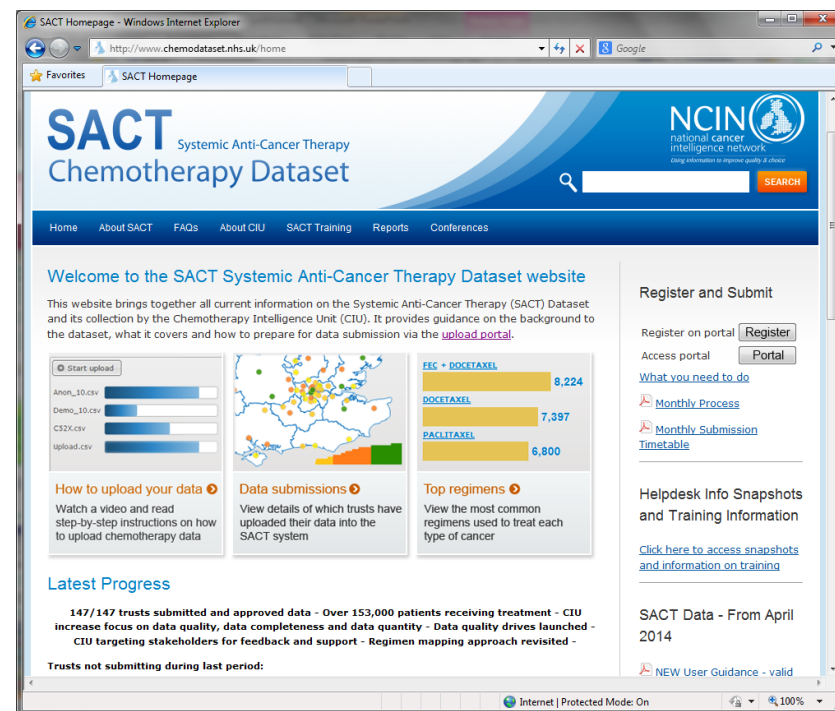
Hospital



Post Chemo Mortality

Data Completeness

Top Regimens



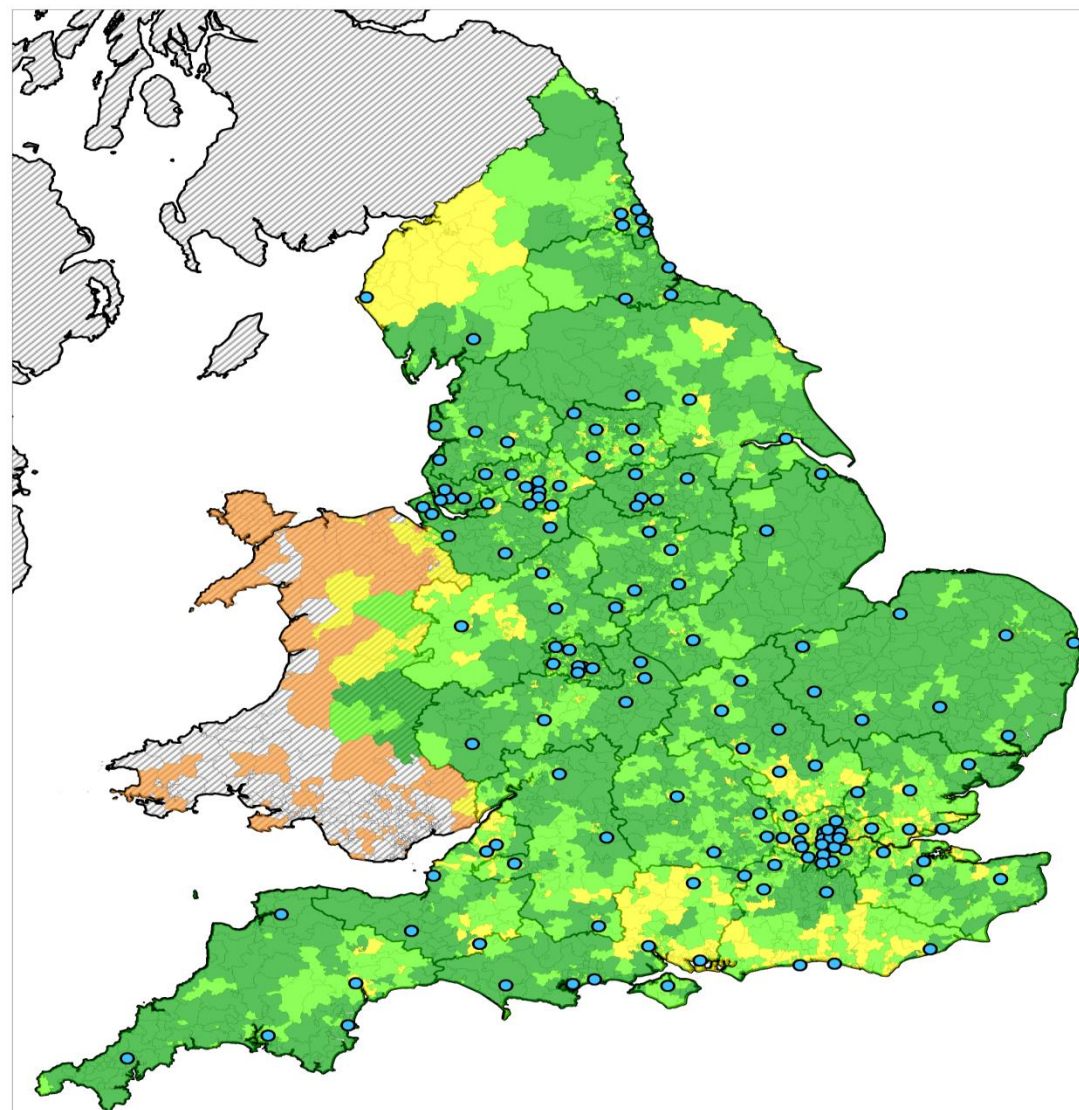
www.chemodataset.nhs.uk



Public Health
England

Coverage Map: A National Perspective

November 2014



Key

Hospital trusts

● Submitting data

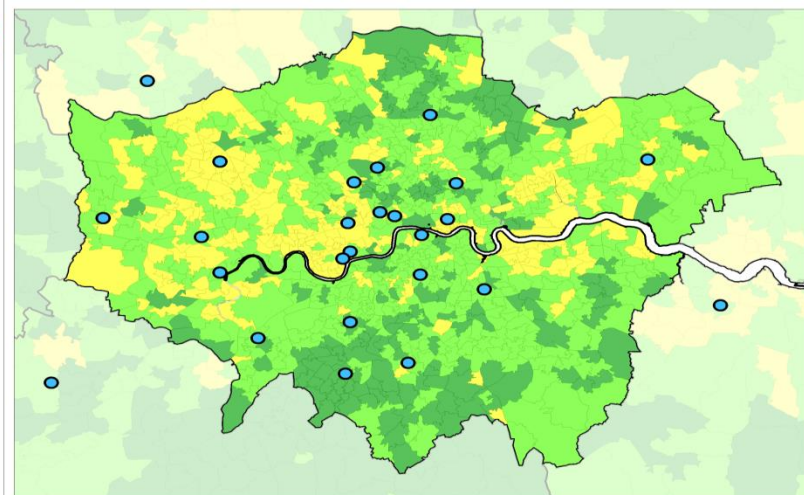
Total patients

1 to 5

5 to 25

25 to 40

40 to 150



© Crown copyright and database rights 2014 Ordnance Survey 10016969

London detail



Public Health
England

So... what do the numbers tell us?

	September '13 to August '14	October '13 to September '14
Patients Receiving Drug Treatments	156,113	158,094
Regimens Commenced	256,712	262,166
Cycles Commenced	694,530	711,447

The figures listed above represent the number of patients reported to the CIU through SACT, for whom treatment activity has been submitted for the period covering October 2013 through September 2014 inclusive.



Public Health
England

How good is the data nationally?

SACT Data Completeness report (October 2013 to September 2014)

England															
All Diagnostic Groups															
Number of patients		% NHS Number		% Date of Birth		% Current gender		% Ethnicity		% Patient postcode					
		100%	M	100%	M	99%	→	94%	→	100%	M				
Number of tumour records		% GP Practice Code		% GMC Code		% Consultant Specialty		% Primary diagnosis		% Morphology		% Stage of disease at start of programme			
		85%	→	91%	↑	92%	↑	100%	✓	53%	↑	37%	↑		
Number of regimens		% Programme number		% Regimen number		% Treatment intent		% Regimen name		% Height at start of regimen		% Weight at start of regimen		% Performance Status at start of regimen	
		71%	↑	62%	↑	80%	→	100%	M	58%	↑	59%	↑	40%	↑
		% Comorbidity adjustment		% Date of decision to treat		% Start date of regimen		% Clinical trial		% Chemo radiation		% Number of cycles planned			
		42%	↑	86%	↑	100%	M	76%	↑	65%	↑	60%	↑		
Number of cycles		% Cycle number		% Start date of cycle		% Weight at start of cycle		% Performance Status at start of cycle		% OPCS procurement code		% of Cycles with Drug records			
		100%	M	95%	→	57%	↑	41%	↑	57%	↑	86%	↑		
Number of drug records		% Drug name		% Actual dose per administration		% Administration route		% Administration date		% OPCS Delivery code		% Organisation code of drug provider			
		100%	✓	93%	↑	94%	→	100%	✓	64%	↑	96%	→		
Number of outcome records		% Date of Final Treatment		% Regimen modification (dose reduction)		% Regimen modification (time delay)		% Regimen modification (stopped early)		% Regimen outcome summary		% Date of death			
		29%	→	50%	↑	22%	↑	42%	↑	7%	→	4%	→		

SACT data completeness for paediatrics (Under 16), October 2013 to September 2014

September 2014	Number of patients	Number of tumour records	Number of regimens	Number of cycles	Number of drug records	Number of outcome records	% Current gender	% Ethnicity	% Primary diagnosis	% Morphology	% Treatment intent	% Height at start of regimen	% Weight at start of regimen	% Performance Status at start of regimen	% Comorbidity adjustment	% Clinical trial	% Chemo radiation	% Start date of cycle	% Weight at start of cycle	% Performance Status at start of cycle	% Drug name	% Actual dose per administration	% Date of Final Treatment	% Regimen outcome summary
Diagnostic Group > NHS England Area Team > Hospital Trust																								
Paediatrics (under 16)	1,354	1,459	3,289	6,799	25,112	1,899	99%	90%	99%	70%	67%	22%	67%	22%	24%	82%	63%	83%	77%	26%	100%	79%	51%	2%
Birmingham and the Black Country	243	322	600	1,173	5,707	580	93%	90%	100%	75%	94%	2%	60%	32%	51%	96%	93%	100%	91%	31%	100%	100%	92%	7%
Birmingham Children's Hospital NHS Foundation Trust	196	274	541	1,096	5,419	541	100%	97%	100%	84%	100%	0%	63%	32%	53%	99%	96%	100%	94%	32%	100%	100%	100%	8%
Shrewsbury and Telford Hospital NHS Trust	4	4	10	16	174	10	100%	100%	100%	75%	90%	0%	30%	40%	40%	90%	60%	100%	94%	44%	100%	100%	100%	0%
University Hospital of North Staffordshire NHS Trust	11	11	14	22	114	14	100%	100%	100%	91%	100%	86%	86%	86%	7%	100%	100%	95%	95%	0%	100%	99%	14%	0%
University Hospitals Birmingham NHS Foundation Trust	31	32	34	38		15	42%	42%	100%	0%	0%	0%	0%	0%	44%	44%	44%	100%	0%	0%			0%	0%
Wye Valley NHS Trust	1	1	1	1			100%	0%	100%	0%	100%	100%	100%	0%	0%	100%	0%	100%	0%	0%				
Bristol, North Somerset, Somerset and South Gloucestershire	84	100	159	259	779	144	100%	40%	100%	84%	89%	0%	67%	13%	48%	92%	81%	95%	58%	10%	100%	98%	67%	18%
Great Western Hospitals NHS Foundation Trust	7	7	14	15	17		100%	100%	100%	14%	0%	0%	0%	0%	0%	7%	0%	20%	0%	0%	100%	0%		
Royal Cornwall Hospitals NHS Trust	5	5	5	5	23	5	100%	100%	100%	100%	100%	0%	0%	0%	0%	100%	80%	100%	0%	0%	100%	100%	100%	0%
Taunton and Somerset NHS Foundation Trust	11	12	44	86	739	44	100%	100%	100%	75%	100%	0%	93%	0%	100%	100%	100%	100%	81%	0%	100%	100%	16%	18%
University Hospitals Bristol NHS Foundation Trust	61	76	96	153		95	100%	18%	100%	91%	97%	0%	69%	22%	33%	100%	84%	99%	52%	17%			99%	22%
Cheshire, Warrington and Wirral	105	105	105	105		105	100%	96%	100%	94%	82%	8%	48%	0%	0%	98%	20%	100%	49%	0%			100%	0%
Alder Hey Children's NHS Foundation Trust	52	52	52	52		52	100%	100%	100%	96%	69%	15%	96%	0%	0%	100%	40%	100%	98%	0%			100%	0%
Central Manchester University Hospitals NHS Foundation Trust	53	53	53	53		53	100%	92%	100%	92%	94%	0%	0%	0%	0%	96%	0%	100%	0%	0%			100%	0%
Cumbria, Northumberland, Tyne and Wear	26	26	26	26	120	15	100%	100%	100%	38%	96%	8%	58%	4%	58%	100%	81%	100%	58%	4%	100%	100%	38%	0%
The Newcastle Upon Tyne Hospitals NHS Foundation Trust	26	26	26	26	120	15	100%	100%	100%	38%	96%	8%	58%	4%	58%	100%	81%	100%	58%	4%	100%	100%	38%	0%
East Anglia	17	19	22	82	259	22	100%	100%	100%	21%	100%	0%	0%	0%	0%	95%	100%	99%	0%	0%	100%	0%	100%	14%
Norfolk and Norwich University Hospitals NHS Foundation Trust	17	19	22	82	259	22	100%	100%	100%	21%	100%	0%	0%	0%	0%	95%	100%	99%	0%	0%	100%	0%	100%	14%
Leicestershire and Lincolnshire	64	64	122	172	1,559	52	100%	98%	81%	50%	99%	3%	99%	20%	76%	100%	99%	100%	99%	35%	100%	93%	2%	2%
Northampton General Hospital NHS Trust	10	10	23	36	190	23	100%	100%	100%	0%	100%	13%	100%	100%	100%	100%	100%	100%	100%	100%	100%	99%	9%	9%
Nottingham University Hospitals NHS Trust	17	17	50	51	243	1	100%	100%	100%	0%	100%	0%	100%	0%	100%	100%	100%	100%	98%	0%	100%	100%	2%	0%
University Hospitals of Leicester NHS Trust	36	36	48	84	1,126	28	100%	100%	67%	89%	100%	2%	100%	2%	42%	100%	100%	100%	29%	100%	91%	0%	0%	0%
London Commissioning Region	574	579	1,740	4,069	11,570	490	100%	91%	100%	73%	43%	33%	61%	27%	17%	97%	51%	71%	71%	32%	100%	83%	21%	0%
Chelsea and Westminster Hospital NHS Foundation Trust	9	9	9	18	42	9	100%	100%	100%	11%	100%	100%	100%	0%	100%	100%	78%	100%	100%	0%	100%	100%	0%	0%
Epsom and St Helier University Hospitals NHS Trust	3	3	3	5			100%	100%	100%	0%	0%	0%	0%	0%	0%	0%	0%	0%	0%	0%				
Great Ormond Street Hospital For Children NHS Foundation Trust	124	124	277	421	2,170	277	100%	100%	99%	69%	100%	4%	97%	72%	100%	100%	99%	100%	98%	95%	100%	100%	78%	0%
King's College Hospital NHS Foundation Trust	2	2	2	2	14	2	100%	100%	100%	100%	100%	100%	100%	0%	100%	100%	100%	100%	100%	0%	100%	100%	50%	0%
North West London Hospitals NHS Trust	2	2	5	5	7	5	100%	100%	100%	0%	100%	100%	100%	100%	100%	100%	100%	100%	100%	100%	100%	0%	0%	0%
St George's Healthcare NHS Trust	1	1	1	1	1	1	100%	0%	100%	0%	100%	100%	100%	100%	100%	100%	100%	100%	100%	100%	100%	100%	0%	0%
The Royal Marsden NHS Foundation Trust	336	336	1,251	3,189	6,485	4	100%	100%	100%	100%	22%	40%	47%	21%	0%	100%	36%	63%	64%	28%	100%	75%	0%	0%
University College London Hospitals NHS Foundation Trust	97	102	192	428	2,851	192	100%	47%	100%	0%	98%	27%	99%	0%	1%	76%	76%	100%	98%	0%	100%	89%	81%	0%
South Yorkshire and Bassetlaw	233	236	501	897	5,089	481	100%	100%	100%	54%	99%	25%	95%	0%	0%	0%	59%	100%	98%	0%	100%	44%	96%	0%
Leeds Teaching Hospitals NHS Trust	126	127	296	544	2,883	296	100%	100%	100%	100%	99%	27%	93%	0%	0%	0%	100%	100%	97%	0%	100%	1%	100%	0%
Sheffield Children's NHS Foundation Trust	107	109	205	353	2,206	185	100%	100%	100%	0%	100%	22%	99%	0%	0%	0%	0%	100%	99%	1%	100%	100%	90%	0%
Surrey and Sussex	5	5	10	11	29	10	100%	100%	100%	60%	100%	10%	80%	20%	100%	100%	100%	100%	100%	55%	100%	100%	60%	0%
Western Sussex Hospitals NHS Trust	5	5	10	11	29	10	100%	100%	100%	60%	100%	10%	80%	20%	100%	100%	100%	100%	100%	55%	100%	100%	60%	0%
Wessex	3	3	4	5			100%	100%	100%	0%	0%	0%	0%	0%	0%	0%	0%	100%	0%	0%				
Dorset County Hospital NHS Foundation Trust	3	3	4	5			100%	100%	100%	0%	0%	0%	0%	0%	0%	0%	0%	100%	0%	0%				



Can I find out how complete my hospital's SACT data is?

SACT Data Completeness Profile						
Trust All diagnostic groups, activity between 01/09/2013 and 30/09/2013						
Trust Name	Total Patients	Total Tumours	Total Regimens	Total Cycles	Total Drugs	Total Outcomes
NHS Foundation Trust	781	788	805	1,149	8,576	805
Key: * = 100% complete = Better than England average = Worse than England average						
% NHS Number* % Date of Birth* % Gender % Ethnicity % Post Code* Total Patients: 781 * 100.0% * 100.0% * 100.0% * 89.0% * 100.0% England average: 100.0% 100.0% 98.2% 92.5% 100.0%						
% GP Practice Code % Consultant GMC code % Consultant Speciality % Primary Diagnosis* % Morphology* % Stage Total Tumours: 788 * 100.0% * 72.0% * 70.9% * 100.0% * 64.5% * 24.2% England average: 76.6% 87.5% 90.1% 100.0% 46.3% 28.1%						
% Programme Number % Regimen Number % Treatment Intent % Height at Regimen Start % Weight at Regimen Start % Performance Status at Regimen Start Total Regimens: 805 * 100.0% * 100.0% * 96.0% * 82.2% * 82.2% * 99.8% England average: 54.0% 67.2% 79.9% 55.7% 55.7% 38.5%						
% Co-Morbidity Adjustment % Decision To Treat Date % Regimen Start Date* % Clinical Trial % Chemo Radiation % Cycles Planned England average: 38.4% 66.8% 100.0% 100.0% 100.0% 58.7%						
% Regimen Name* % Regimen matching OPCS 4.6 % Regimen mapped by CIU % Regimen mapped to TRIAL % Regimen mapped to NOT CHEMO England average: 100.0% 42.6% 50.0% 7.4% 0.0%						
% Cycle Number* % Cycle Start Date % Weight at Cycle Start % Performance Status at Cycle Start % OPCS Procurement Code Total Cycles: 1,149 * 100.0% * 99.0% * 13.8% * 99.7% * 69.4% England average: 100.0% 95.9% 48.8% 31.5% 48.9%						
% Drug Name % Dose % Route of Administration % Date of Administration % Organisation Code of Drug Provider % OPCS Delivery Code Total Drugs: 8,576 * 100.0% * 98.0% * 100.0% * 100.0% * 100.0% * 70.9% England average: 100.0% 94.5% 91.3% 100.0% 94.6% 58.0%						
% Final Treatment Date % Regimen Modification Dose Reduction % Regimen Modification Time Delay % Regimen Modification Stopped Early % Regimen Outcome Summary % Date of Death Total Outcomes: 805 3.5% 100.0% 100.0% 100.0% 100.0% 0.5%						

* Mandatory fields are denoted with an asterisk

Report executed on 12 November 2013. Source: SACT.

SACT Data Quality Profile

Trust
Reported activity taking place between 01/09/2013 and 30/09/2013



1. Morphology completion for critical diagnostic groups

Proportion of patients in each diagnostic group with morphology recorded

Gynae (Ovarian)	Lung	Urology (Testis)
98% 53 out of 54 patients	80% 35 out of 44 patients	80% 4 out of 5 patients

2. Intent of Treatment by diagnostic group

Total number of patients treated between 01/09/2013 and 30/09/2013 with treatment intent recorded.

Percentages are aggregated by diagnostic group. Patients with multiple treatment intent recorded will be double-counted.

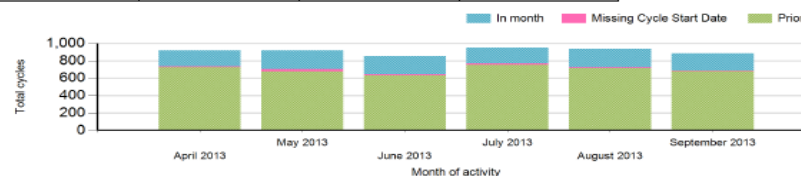
	Adjuvant	Curative	Disease Modification	Neo-adjuvant	Palliative	Not recorded
Brain/CNS	9 (24%)	15 (39%)	0 (0%)	0 (0%)	14 (37%)	0 (0%)
Breast	63 (47%)	7 (5%)	0 (0%)	19 (14%)	39 (29%)	5 (4%)
Gynae	20 (24%)	7 (8%)	0 (0%)	9 (11%)	48 (58%)	1 (1%)
Head and Neck	0 (0%)	8 (80%)	0 (0%)	0 (0%)	2 (20%)	0 (0%)
Leukaemia	2 (4%)	13 (27%)	0 (0%)	0 (0%)	34 (68%)	0 (0%)
Lower GI	24 (35%)	6 (9%)	0 (0%)	2 (3%)	36 (52%)	1 (1%)
Lung	2 (4%)	4 (9%)	0 (0%)	0 (0%)	39 (87%)	0 (0%)
Lymphoma	0 (0%)	36 (55%)	0 (0%)	0 (0%)	29 (45%)	0 (0%)
Miscellaneous	2 (5%)	4 (9%)	0 (0%)	0 (0%)	36 (82%)	2 (5%)
Myeloma	2 (4%)	2 (4%)	0 (0%)	0 (0%)	42 (91%)	0 (0%)
Sarcoma	1 (17%)	0 (0%)	0 (0%)	0 (0%)	5 (83%)	0 (0%)
Skin	0 (0%)	2 (8%)	0 (0%)	0 (0%)	23 (92%)	0 (0%)
Upper GI	2 (5%)	5 (12%)	0 (0%)	1 (2%)	32 (76%)	2 (5%)
Urology	11 (16%)	3 (4%)	0 (0%)	0 (0%)	43 (64%)	10 (15%)

3. Number of cycles reported

Number of cycles reported by cycle start date and corresponding regimen start category ('In month' or 'Prior').

Percentages are aggregated by month of cycle start.

Month of cycle start	Regimen Start Date		
	In month	Missing Cycle Start Date	Prior
April 2013	183 (20%)	10 (1%)	726 (79%)
May 2013	214 (23%)	25 (3%)	679 (74%)
June 2013	206 (24%)	17 (2%)	629 (74%)
July 2013	181 (19%)	15 (2%)	756 (79%)
August 2013	213 (23%)	10 (1%)	714 (76%)
September 2013	195 (22%)	10 (1%)	680 (77%)





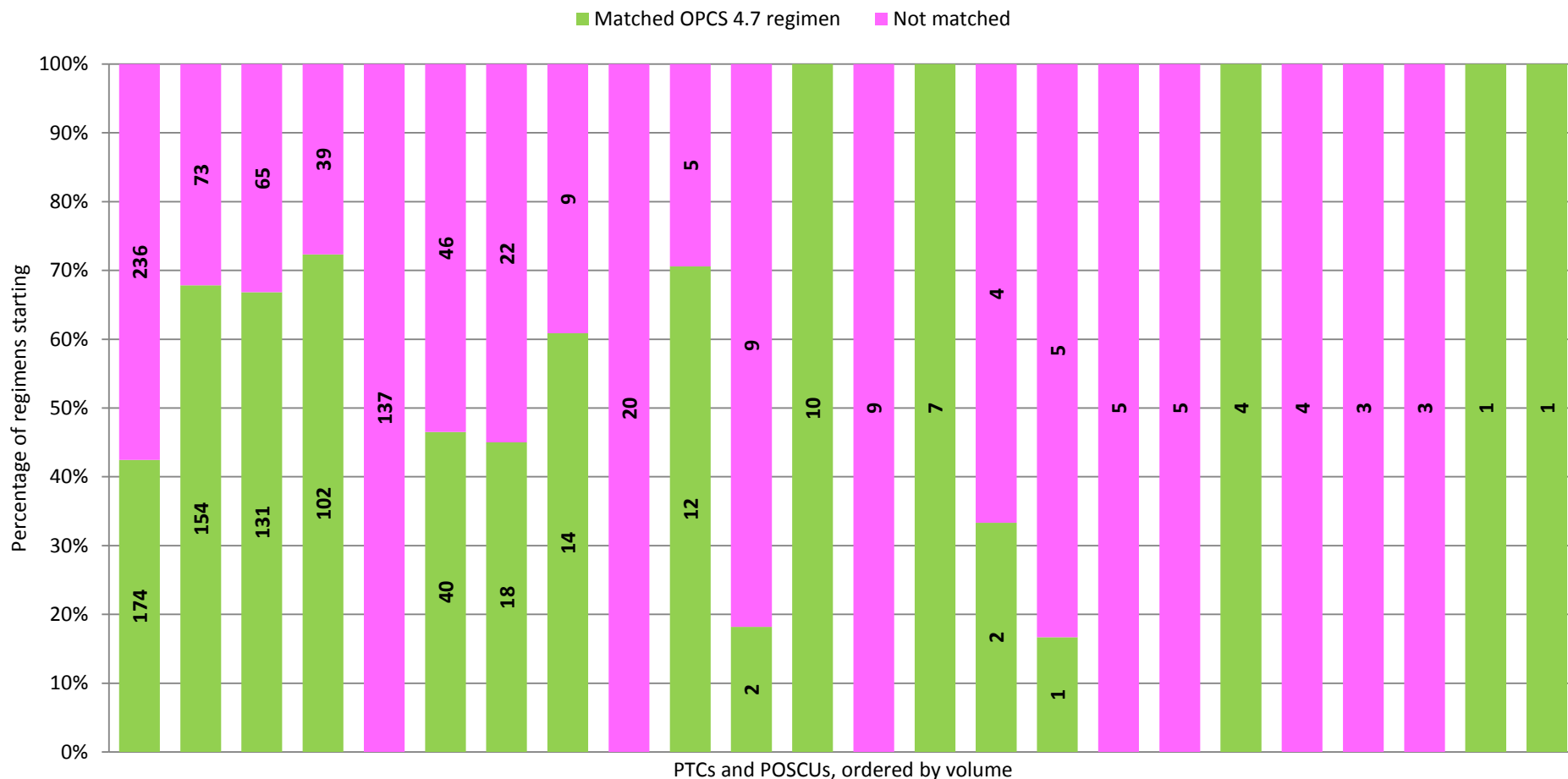
Online Regimen Mapping Tool Launched

- ✓ Providers now have the responsibility to map their local regimen names to nationally recognised regimen nomenclature using the new mapping tool.
- ✓ The tool was tested by members of the SACT User Group, before being launched on the upload portal.
- ✓ Using feedback, the written guidelines and step by step guide have been produced in conjunction with senior pharmacists who are supporting the team.
- ✓ We currently have over 50 registered users with the new role of “Regimen mapping”

Total regimens starting from April 2014 for paediatric patients* matching OPCS 4.7 Regimen List (2014/15)

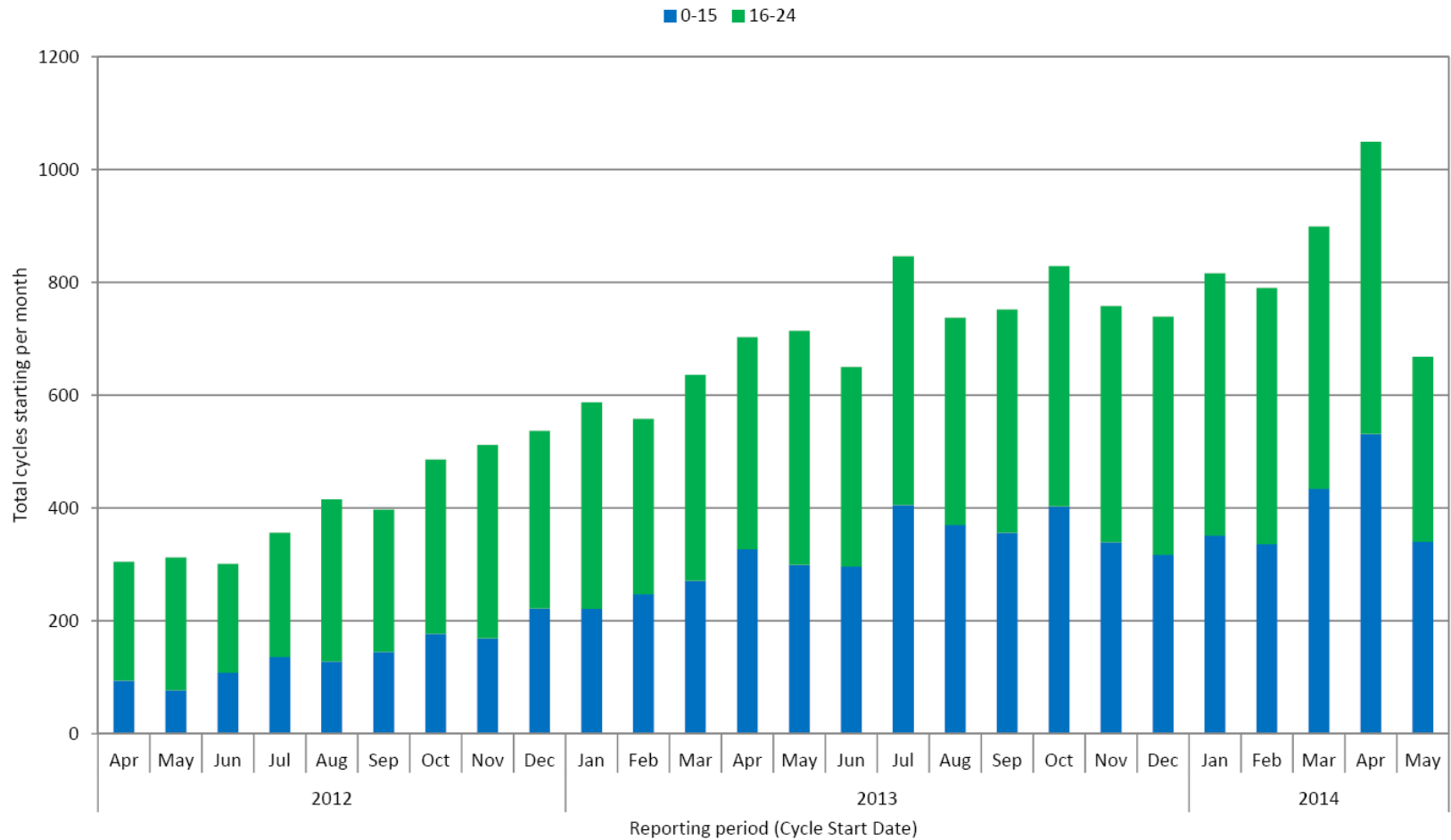
Source: SACT, accessed 5th November 2014

* Patients aged 15 and under at start of regimen



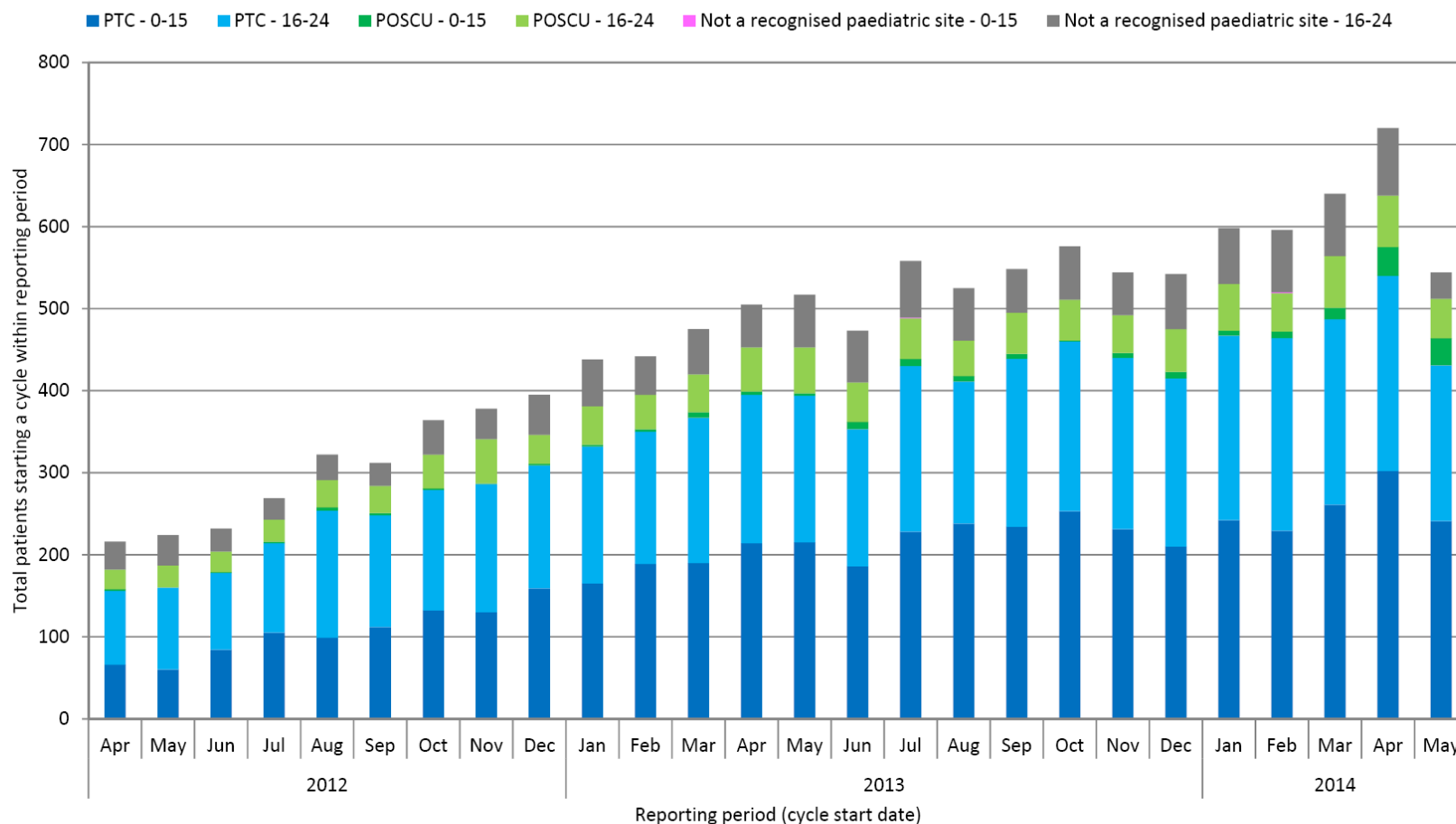
Total cycles starting by month and age group

Source: SACT, accessed 17th July 2014



Total patients starting cycle within reporting period, grouped by organisation type **(Primary Treatment Centres, Paediatric Oncology Shared Care Units)**

Source: SACT, accessed 17th July 2014

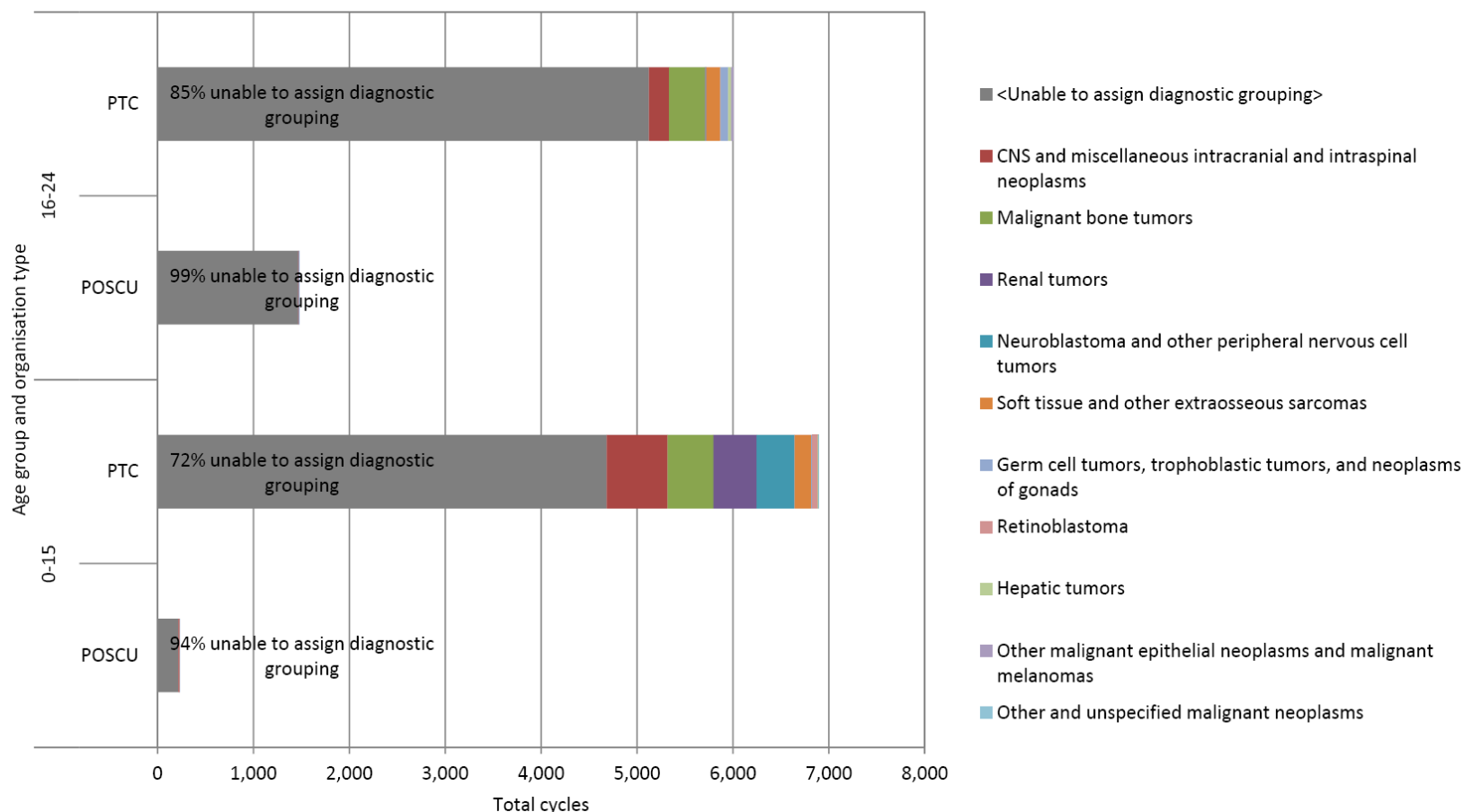


NOT FOR DISTRIBUTION

Total cycles by diagnostic group, organisation type and age group

(cycles starting from 2012 onwards)

Source: SACT, accessed 17th July 2014

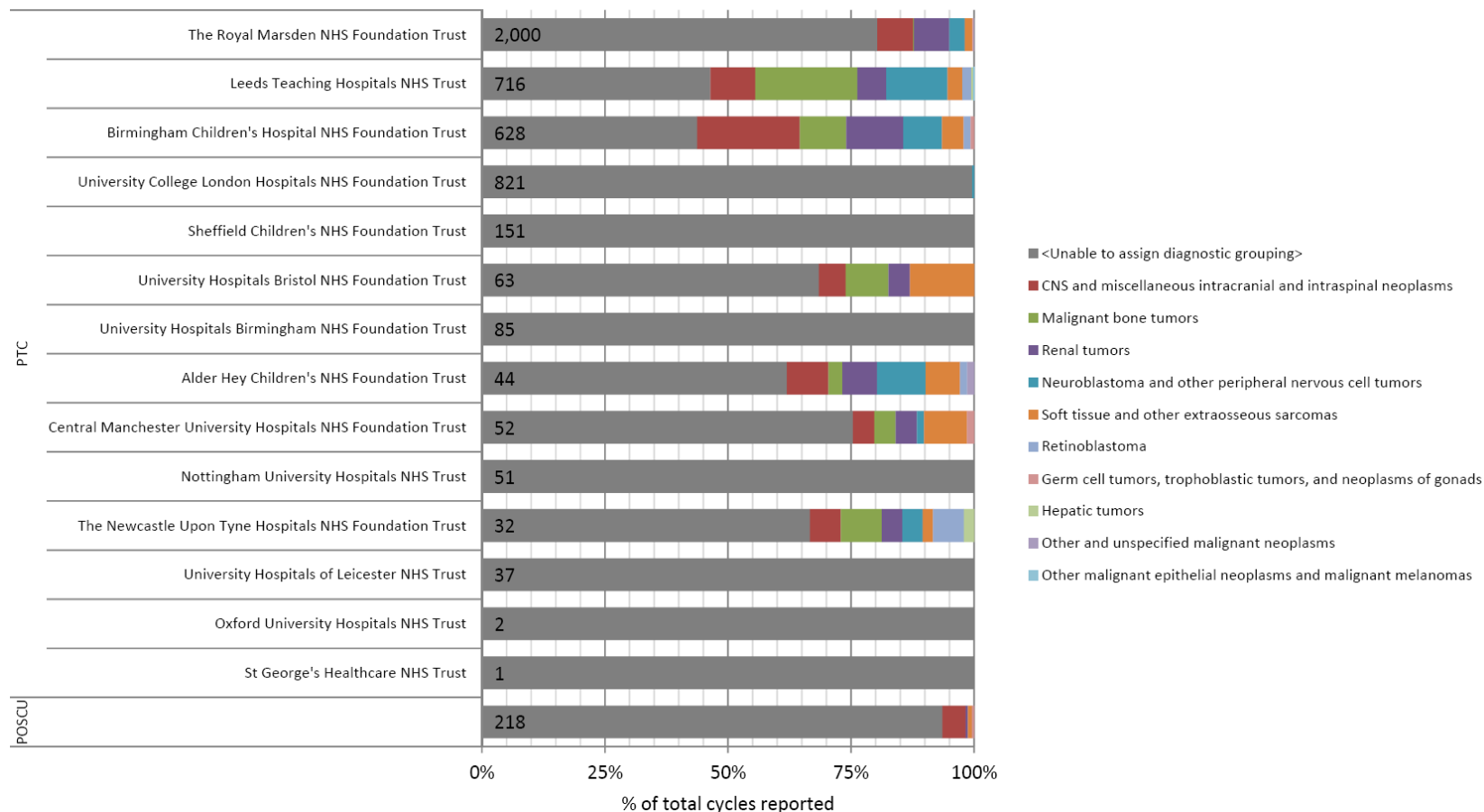


NOT FOR DISTRIBUTION

% of total cycles by diagnostic groupings and hospital trust

(cycles starting from 2012 onwards)

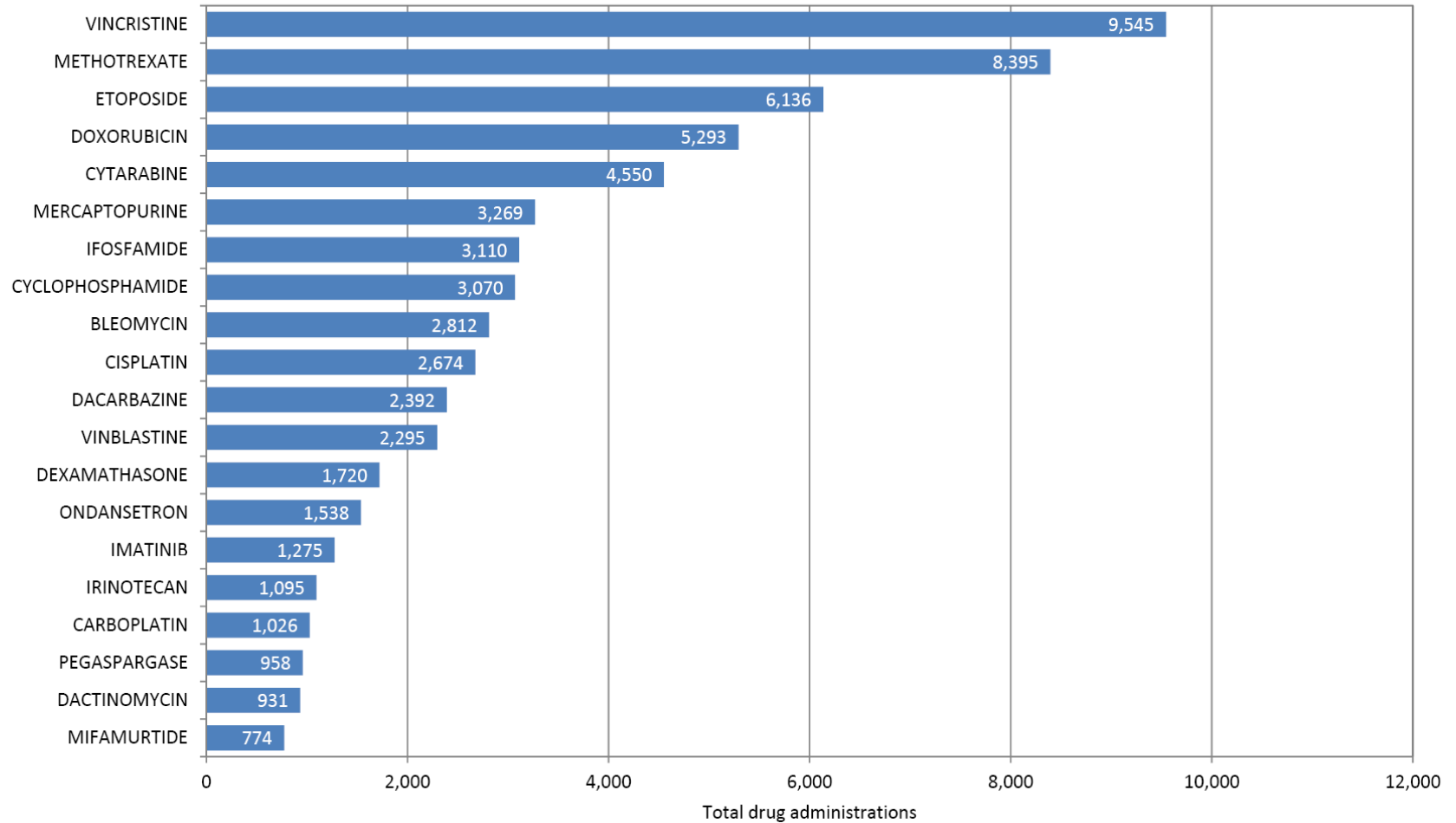
Source: SACT, accessed 17th July 2014



NOT FOR DISTRIBUTION

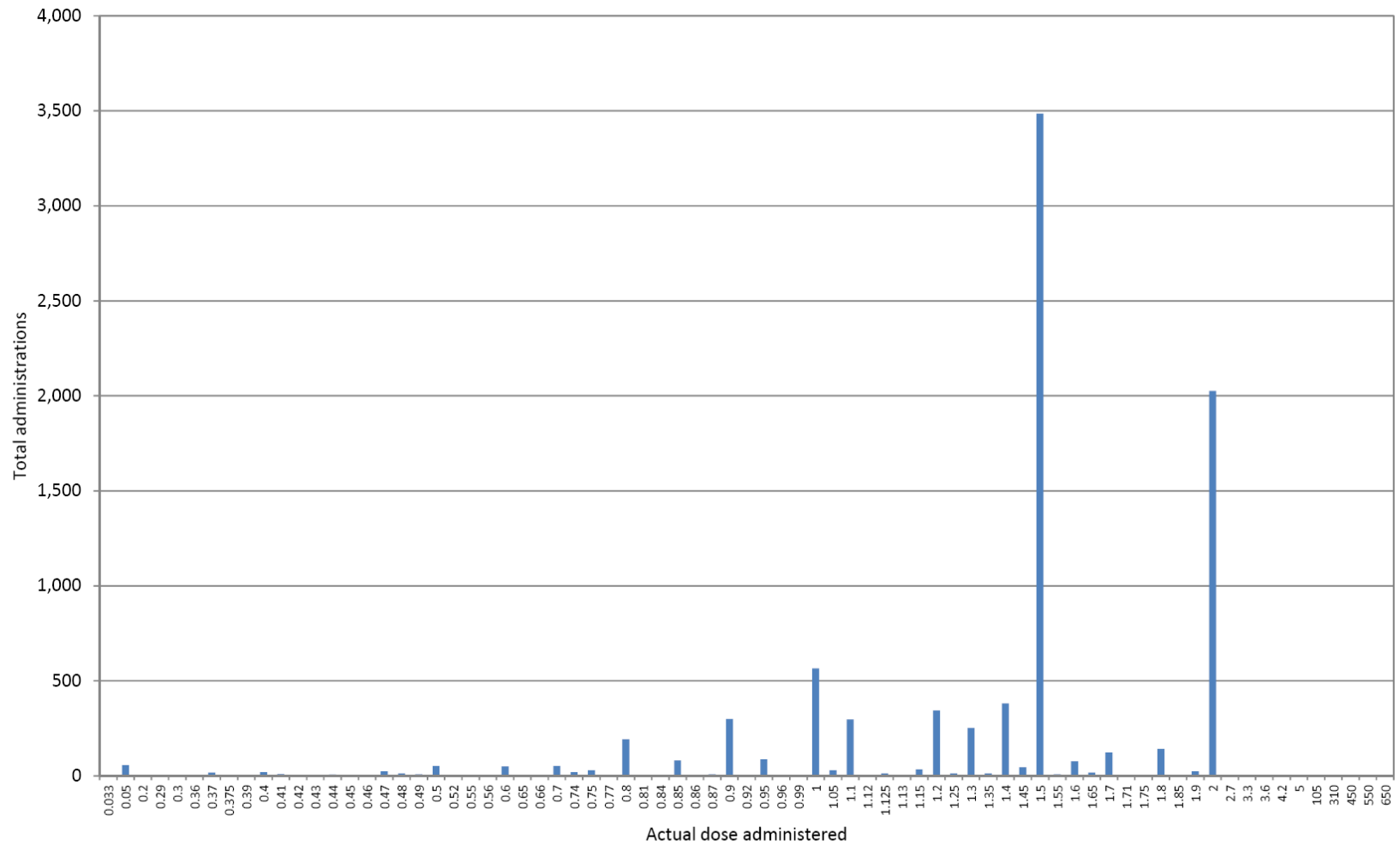
Top 20 drugs (total administrations reported)

Source: SACT, accessed 21st July 2014



NOT FOR DISTRIBUTION

Actual dose administered for VINCRISTINE



NOT FOR DISTRIBUTION



Key messages for paediatrics...

- **Collect and submit all activity**
- **Use ICC3 – diagnosis and morphology**
- **Avoid using bucket codes**
- **Include line of treatment (programme number)**
- **Include treatment intent**
- **Close episodes including outcome fields**
- **If in doubt, contact the CIU helpdesk.**