



Public Health
England

Systemic Anti Cancer Therapy (SACT)

Upper GI SSCRG

Michael Wallington

National Disease Registration, CKO



Public Health
England

What is currently available and how do I gain access?

Nationally



Coverage Map

Numbers in Treatment

Top Regimens

Area Team



Data Completeness

Benchmarking

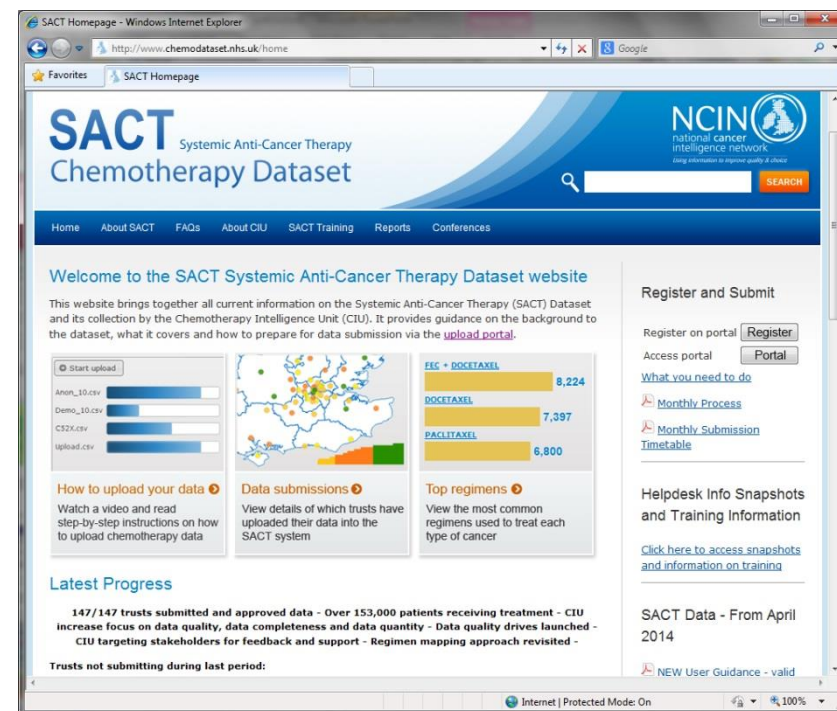
Hospital



Post Chemo Mortality

Data Completeness

Top Regimens



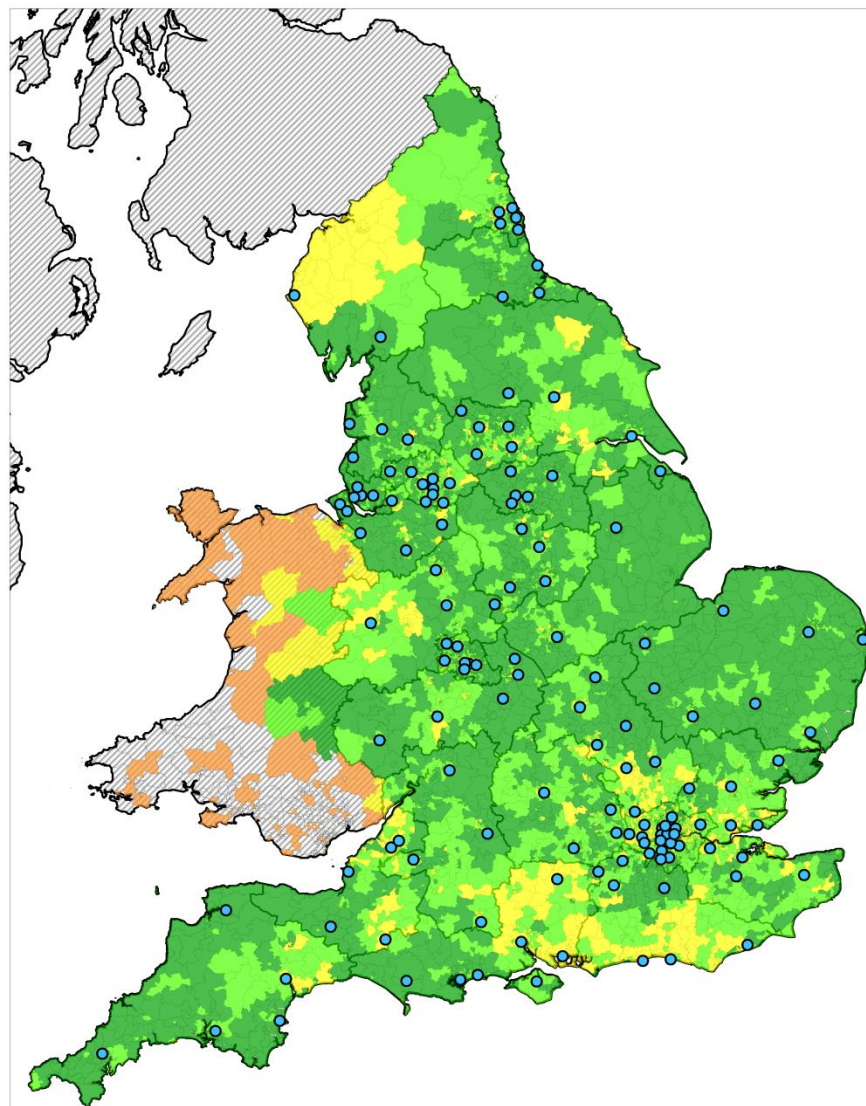
www.chemodataset.nhs.uk



Public Health
England

Coverage Map: A National Perspective

6th October 2014



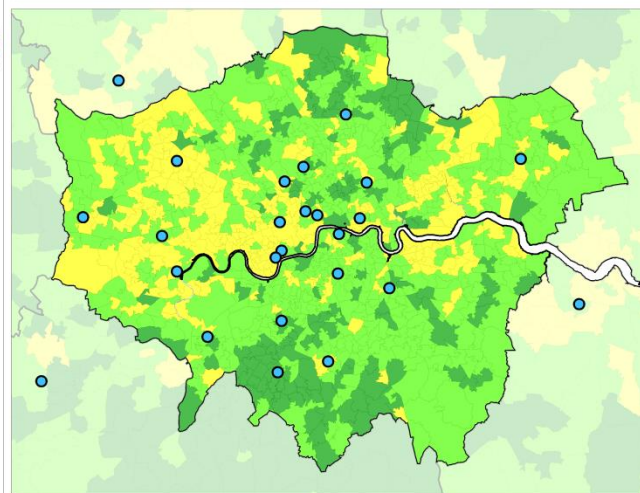
Key

Hospital trusts

● Submitting data

Total patients

1 to 5
5 to 25
25 to 40
40 to 150



© Crown copyright and database rights 2014 Ordnance Survey 10016969

London detail



So... what do the numbers tell us?

	July '13 to June'14	August '13 to July'14
Patients Receiving Drug Treatments	153,348	154,879
Regimens Commenced	250,131	254,162
Cycles Commenced	669,937	681,073

The figures listed above represent the number of patients reported to the CIU through SACT, for whom treatment activity has been submitted for the period covering August 2013 through July 2014 inclusive.



Public Health
England

How good is the data nationally?

SACT data completeness, September 2013 to August 2014

England															
Upper GI															
Number of patients	% NHS Number		% Date of Birth		% Current gender		% Ethnicity		% Patient postcode						
	12,510	↑	100%	M	100%	M	98%	→	94%	→	100%	M			
Number of tumour records	% GP Practice Code		% GMC Code		% Consultant Specialty		% Primary diagnosis		% Morphology		% Stage of disease at start of programme				
	13,319	↑	85%	→	90%	→	92%	↑	100%	✓	50%	↑	45%	↑	
Number of regimens	% Programme number		% Regimen number		% Treatment intent		% Regimen name		% Height at start of regimen		% Weight at start of regimen		% Performance Status at start of regimen		
	17,624	↑	65%	↑	63%	↑	82%	→	100%	M	66%	↑	66%	↑	44%
	% Comorbidity adjustment		% Date of decision to treat		% Start date of regimen		% Clinical trial		% Chemo radiation		% Number of cycles planned				
			42%	↑	87%	→	100%	M	77%	↑	64%	↑	61%	↑	
Number of cycles	% Cycle number		% Start date of cycle		% Weight at start of cycle		% Performance Status at start of cycle		% OPCS procurement code		% of Cycles with Drug records				
	46,094	↑	100%	M	94%	→	60%	↑	41%	↑	63%	↑	85%	→	
Number of drug records	% Drug name		% Actual dose per administration		% Administration route		% Administration date		% OPCS Delivery code		% Organisation code of drug provider				
	155,219	↑	100%	✓	93%	→	93%	↑	100%	✓	66%	↑	97%	↑	
Number of outcome records	% Date of Final Treatment		% Regimen modification (dose reduction)		% Regimen modification (time delay)		% Regimen modification (stopped early)		% Regimen outcome summary		% Date of death				
	11,533	↑	26%	→	50%	↑	22%	↑	42%	↑	7%	→	6%	→	

Key

↑ Increase in completeness since comparison period

↓ Decrease in completeness since comparison period

→ No change in completeness since comparison period

✓ 100% completion (for non-mandatory items)

M Mandatory item (always 100%)

Key	
↑	Increase in completeness since comparison period
↓	Decrease in completeness since comparison period
→	No change in completeness since comparison period
✓	100% completion (for non-mandatory items)
M	Mandatory item (always 100%)

65% of regimens



How good is my data, compared to hospitals in my area team?

[illegible]



Can I find out how complete my hospital's Upper GI data is?

SACT Data Completeness Profile						
Trust All diagnostic groups, activity between 01/09/2013 and 30/09/2013						
Trust Name	Total Patients	Total Tumours	Total Regimens	Total Cycles	Total Drugs	Total Outcomes
NHS Foundation Trust	781	788	805	1,149	8,576	805
Key: * = 100% complete = Better than England average = Worse than England average						
% NHS Number* % Date of Birth* % Gender % Ethnicity % Post Code*						
Total Patients: 781	100.0%	100.0%	100.0%	89.0%	100.0%	
England average:	100.0%	100.0%	98.2%	92.5%	100.0%	
% GP Practice Code % Consultant GMC code % Consultant Speciality % Primary Diagnosis* % Morphology* % Stage						
Total Tumours: 788	100.0%	72.0%	70.9%	100.0%	64.5%	24.2%
England average:	76.6%	87.5%	90.1%	100.0%	46.3%	28.1%
% Programme Number % Regimen Number % Treatment Intent % Height at Regimen Start % Weight at Regimen Start % Performance Status at Regimen Start						
Total Regimens: 805	100.0%	100.0%	96.0%	82.2%	82.2%	99.8%
England average:	54.0%	67.2%	79.9%	55.7%	55.7%	38.5%
% Co-Morbidity Adjustment % Decision To Treat Date % Regimen Start Date* % Clinical Trial % Chemo Radiation % Cycles Planned						
England average:	0.0%	66.8%	100.0%	100.0%	100.0%	100.0%
	38.4%	84.9%	100.0%	76.6%	55.6%	58.7%
% Regimen Name* % Regimen matching OPCS 4.6 % Regimen mapped by CIU % Regimen mapped to TRIAL % Regimen mapped to NOT CHEMO						
England average:	100.0%		42.6%	50.0%	7.4%	0.0%
	100.0%					
% Cycle Number* % Cycle Start Date % Weight at Cycle Start % Performance Status at Cycle Start % OPCS Procurement Code						
Total Cycles: 1,149	100.0%	99.0%	13.8%	99.7%	69.4%	
England average:	100.0%	95.9%	48.8%	31.5%	48.9%	
% Drug Name % Dose % Route of Administration % Date of Administration % Organisation Code of Drug Provider % OPCS Delivery Code						
Total Drugs: 8,576	100.0%	98.0%	100.0%	100.0%	100.0%	70.9%
England average:	100.0%	94.5%	91.3%	100.0%	94.6%	58.0%
% Final Treatment Date % Regimen Modification Dose Reduction % Regimen Modification Time Delay % Regimen Modification Stopped Early % Regimen Outcome Summary % Date of Death						
Total Outcomes: 805	3.5%	100.0%	100.0%	100.0%	100.0%	0.5%

* Mandatory fields are denoted with an asterisk

Report executed on 12 November 2013. Source: SACT.

SACT Data Quality Profile

Trust
Reported activity taking place between 01/09/2013 and 30/09/2013



1. Morphology completion for critical diagnostic groups

Proportion of patients in each diagnostic group with morphology recorded

Gynae (Ovarian)	Lung	Urology (Testis)
98% 53 out of 54 patients	80% 35 out of 44 patients	80% 4 out of 5 patients

2. Intent of Treatment by diagnostic group

Total number of patients treated between 01/09/2013 and 30/09/2013 with treatment intent recorded.

Percentages are aggregated by diagnostic group. Patients with multiple treatment intent recorded will be double-counted.

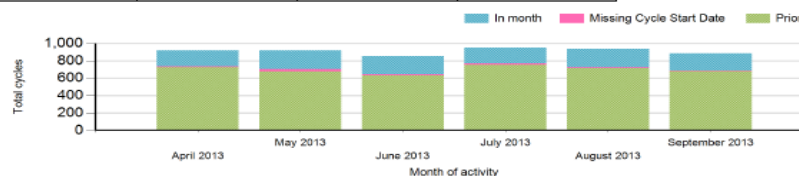
	Adjuvant	Curative	Disease Modification	Neo-adjuvant	Palliative	Not recorded
Brain/CNS	9 (24%)	15 (39%)	0 (0%)	0 (0%)	14 (37%)	0 (0%)
Breast	63 (47%)	7 (5%)	0 (0%)	19 (14%)	39 (29%)	5 (4%)
Gynae	20 (24%)	7 (8%)	0 (0%)	9 (11%)	48 (58%)	1 (1%)
Head and Neck	0 (0%)	8 (80%)	0 (0%)	0 (0%)	2 (20%)	0 (0%)
Leukaemia	2 (4%)	13 (27%)	0 (0%)	0 (0%)	34 (68%)	0 (0%)
Lower GI	24 (35%)	6 (9%)	0 (0%)	2 (3%)	36 (52%)	1 (1%)
Lung	2 (4%)	4 (9%)	0 (0%)	0 (0%)	39 (87%)	0 (0%)
Lymphoma	0 (0%)	36 (55%)	0 (0%)	0 (0%)	29 (45%)	0 (0%)
Miscellaneous	2 (5%)	4 (9%)	0 (0%)	0 (0%)	36 (82%)	2 (5%)
Myeloma	2 (4%)	2 (4%)	0 (0%)	0 (0%)	42 (91%)	0 (0%)
Sarcoma	1 (17%)	0 (0%)	0 (0%)	0 (0%)	5 (83%)	0 (0%)
Skin	0 (0%)	2 (8%)	0 (0%)	0 (0%)	23 (92%)	0 (0%)
Upper GI	2 (5%)	5 (12%)	0 (0%)	1 (2%)	32 (76%)	2 (5%)
Urology	11 (16%)	3 (4%)	0 (0%)	0 (0%)	43 (64%)	10 (15%)

3. Number of cycles reported

Number of cycles reported by cycle start date and corresponding regimen start category ('In month' or 'Prior').

Percentages are aggregated by month of cycle start.

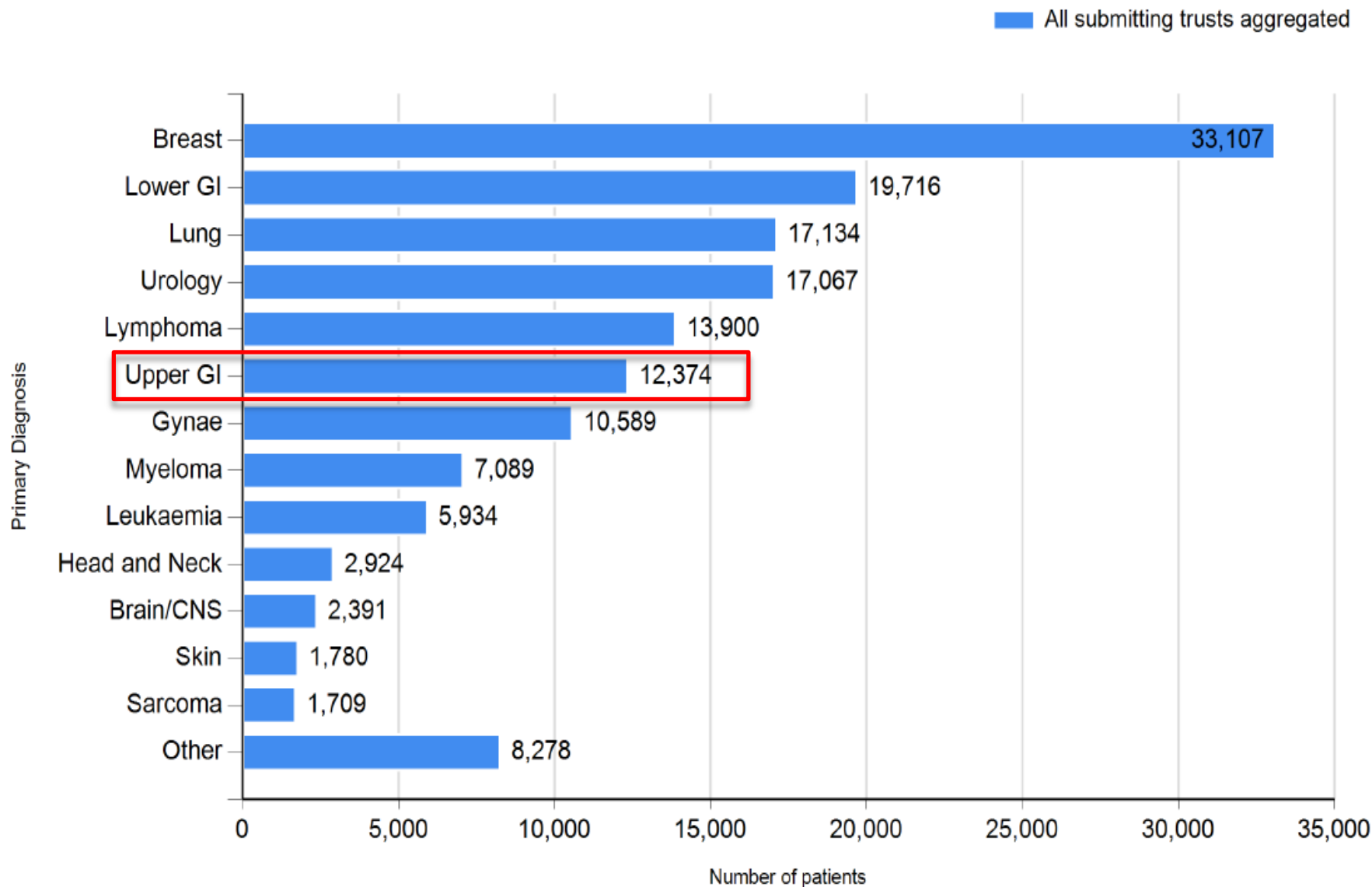
Month of cycle start	Regimen Start Date		
	In month	Missing Cycle Start Date	Prior
April 2013	183 (20%)	10 (1%)	726 (79%)
May 2013	214 (23%)	25 (3%)	679 (74%)
June 2013	206 (24%)	17 (2%)	629 (74%)
July 2013	181 (19%)	15 (2%)	756 (79%)
August 2013	213 (23%)	10 (1%)	714 (76%)
September 2013	195 (22%)	10 (1%)	680 (77%)



Number of Patients by Diagnostic Group

All submitting trusts aggregated

Data received for July 2013 - June 2014. Patients aged 16 and over



Top Regimens by Diagnostic Group

Upper GI (All Upper GI)

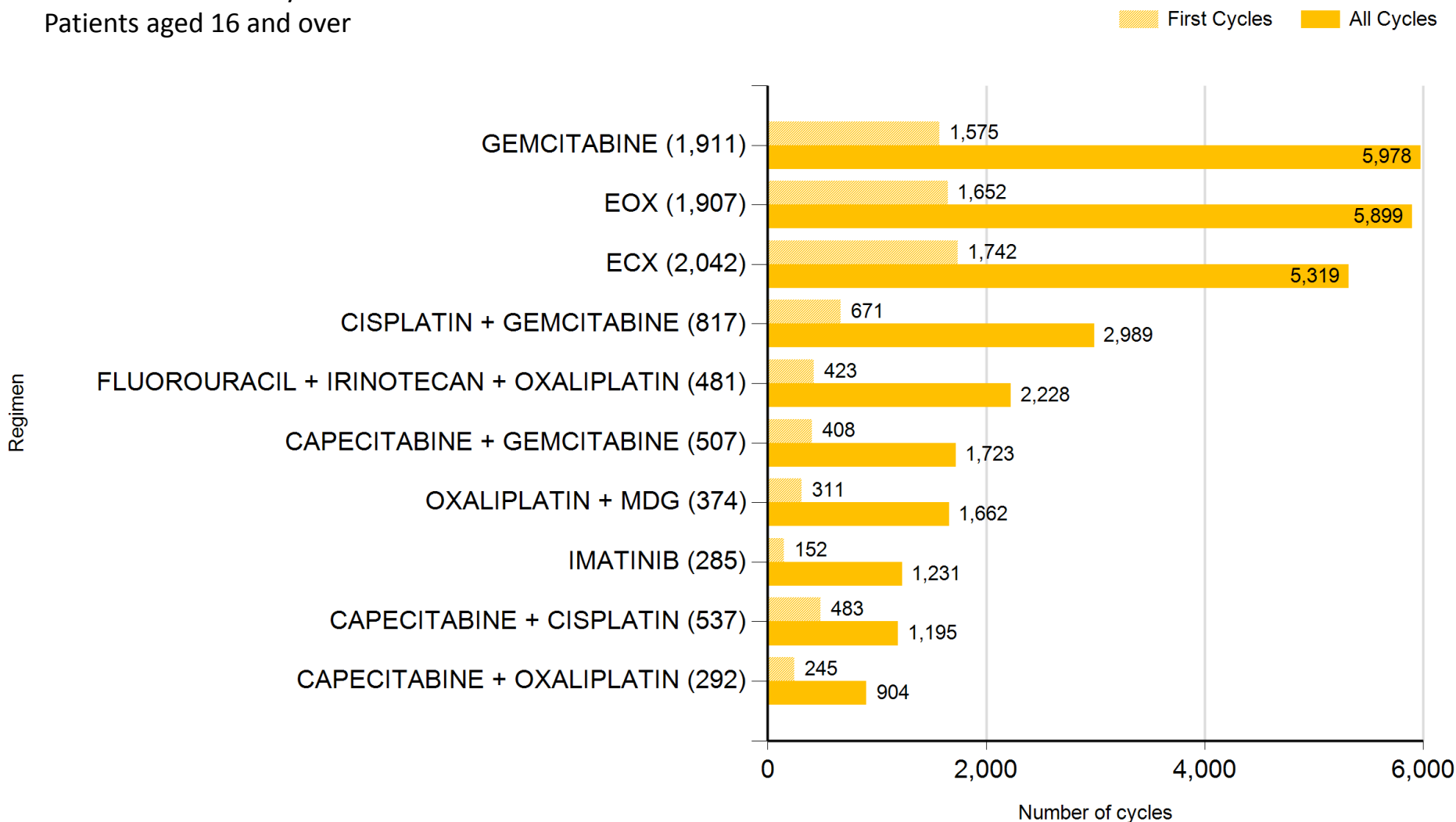
ICD10: C15-C17, C22-C25

All submitting trusts aggregated

Data received for July 2013 – June 2014.

Patients aged 16 and over

These reports are available at a provider level
There are in excess of 250 regimens for this
disease group



Top Regimens by Diagnostic Group

Upper GI (Oesophago-gastric)

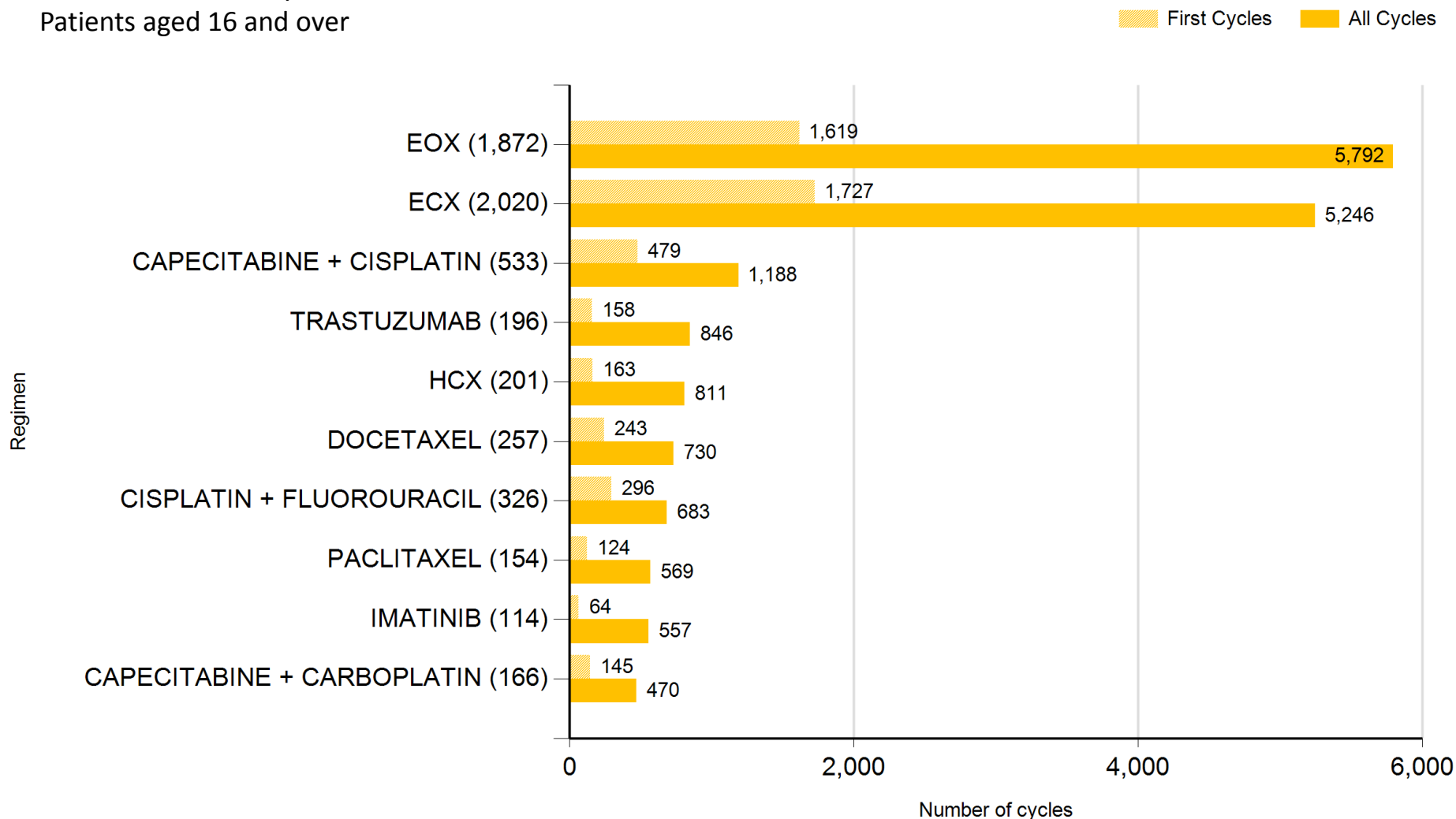
ICD10: C15-C16

All submitting trusts aggregated

Data received for July 2013 – June 2014.

Patients aged 16 and over

These reports are available at a provider level
There are in excess of 160 regimens for this
disease group



Top Regimens by Diagnostic Group

Upper GI (Pancreas)

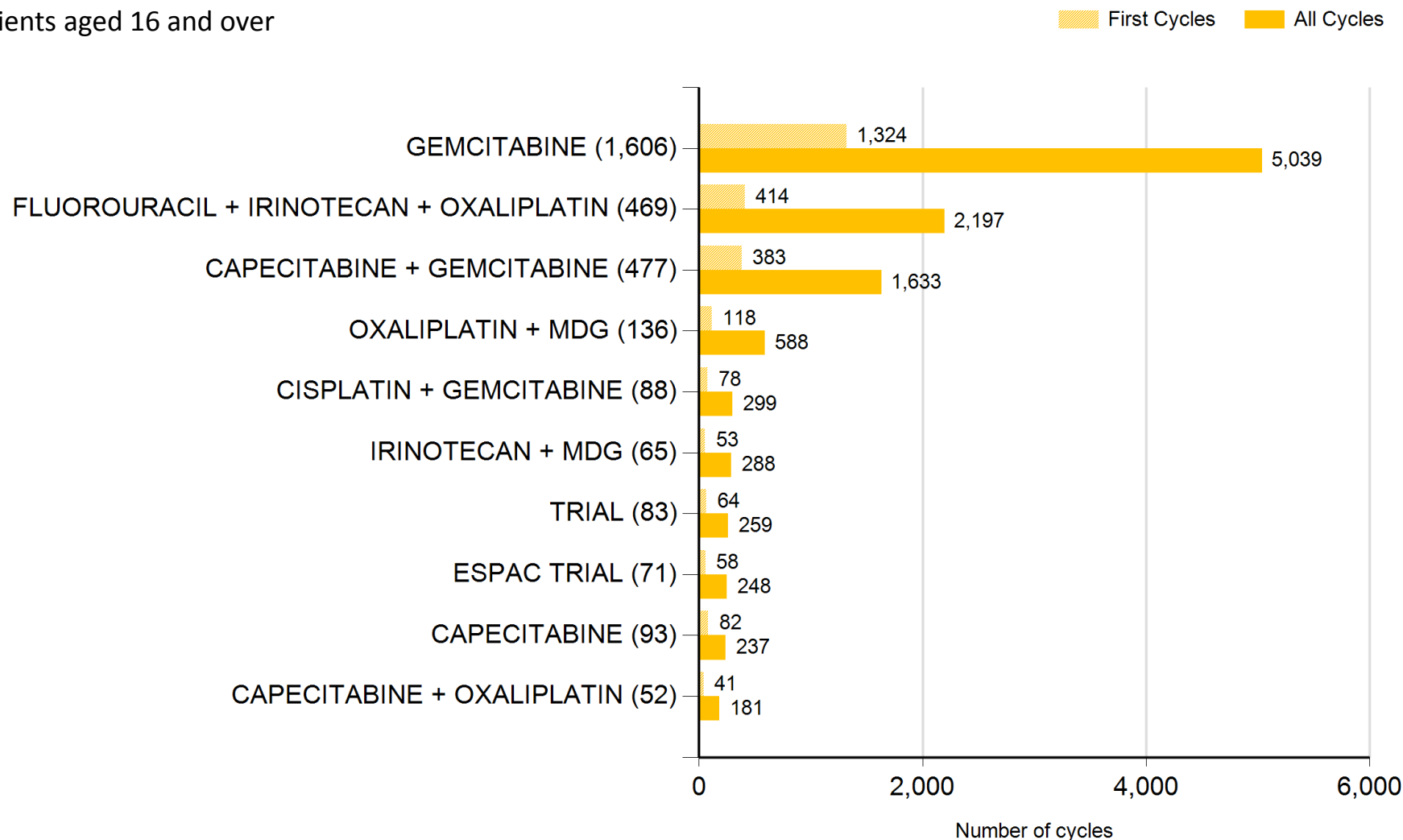
ICD10: C25

All submitting trusts aggregated

Data received for July 2013 – June 2014.

Patients aged 16 and over

These reports are available at a provider level
There are in excess of 95 regimens for this
disease group





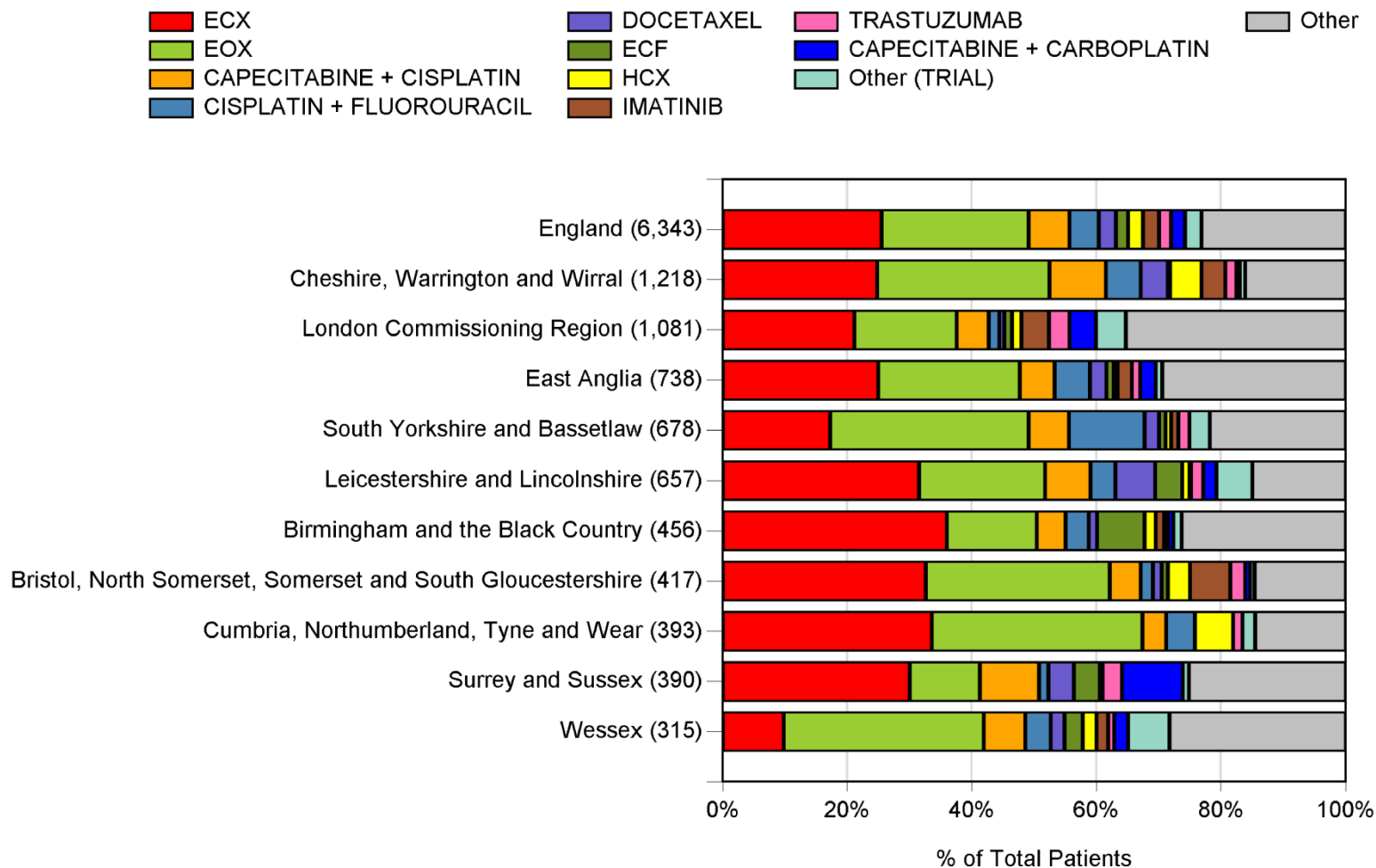
Public Health England

Regimen benchmarking

Upper GI (Oesophago-gastric) ICD10: C15-C16

Data received for April 2013 - March 2014.

NHS England Area Team comparison; Includes activity from trusts where more than 50 patients aged 16 and over received treatment





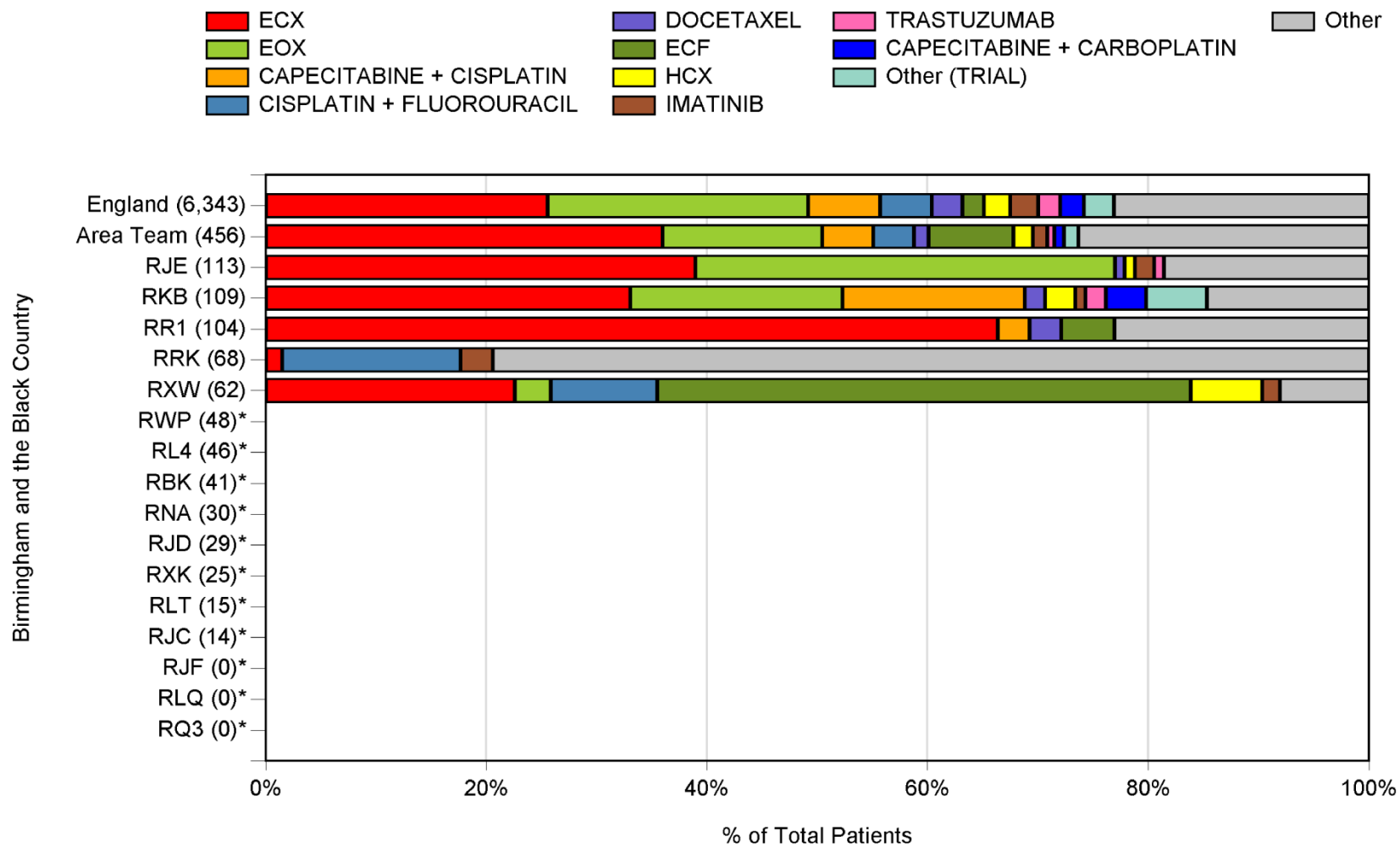
Public Health England

Regimen benchmarking

Upper GI (Oesophago-gastric) ICD10: C15-C16

Data received for April 2013 - March 2014.

Birmingham and the Black Country; Trusts included where more than 50 patients aged 16 and over received treatment





Public Health
England

Post Chemotherapy Mortality Analysis

- ✓ From **25th July 2014** all NHS providers of chemotherapy in England will be able to access their 30/60/90-day post chemotherapy mortality analysis through the **secure online portal**.
- ✓ This analysis is available by tumour group and will provide a national comparison.
- ✓ **It is essential that clinical teams** within provider organisations check the accuracy of their data and contact the team in Oxford where there are **any possible discrepancies**.
- ✓ A letter to Medical Directors and Lead Chemotherapy Consultants has been sent out raising awareness of these reports.



Post Chemotherapy Mortality Analysis

(2)

Trust

Diagnostic Group

[View Report](#)

Intent of treatment

Show regimens with no deaths?

Sort by

Start Date

End Date

2 of 2 100% Find | Next

Post-chemotherapy mortality analysis (January 2013 - December 2013) **For demonstration purposes only**

Source: SACT, ENCORE (CAS) and Personal Demographics Service (PDS), accessed 15th May 2014

	Total patients	Deaths 0-30 days	Deaths 0-60 days	Deaths 0-90 day	Total deaths
NHS Trust	2,767	196	375	523	958

	Total patients	Deaths 0-30 days	Deaths 0-60 days	Deaths 0-90 day	Total deaths
Upper GI	303	17	45	72	167
Curative	106	1	3	8	22
GEMCITABINE	9	1	1	3	5
CISPLATIN + FLUOROURACIL	35	0	0	1	7
EOX	19	0	2	2	4
TRIAL	4	0	0	1	2



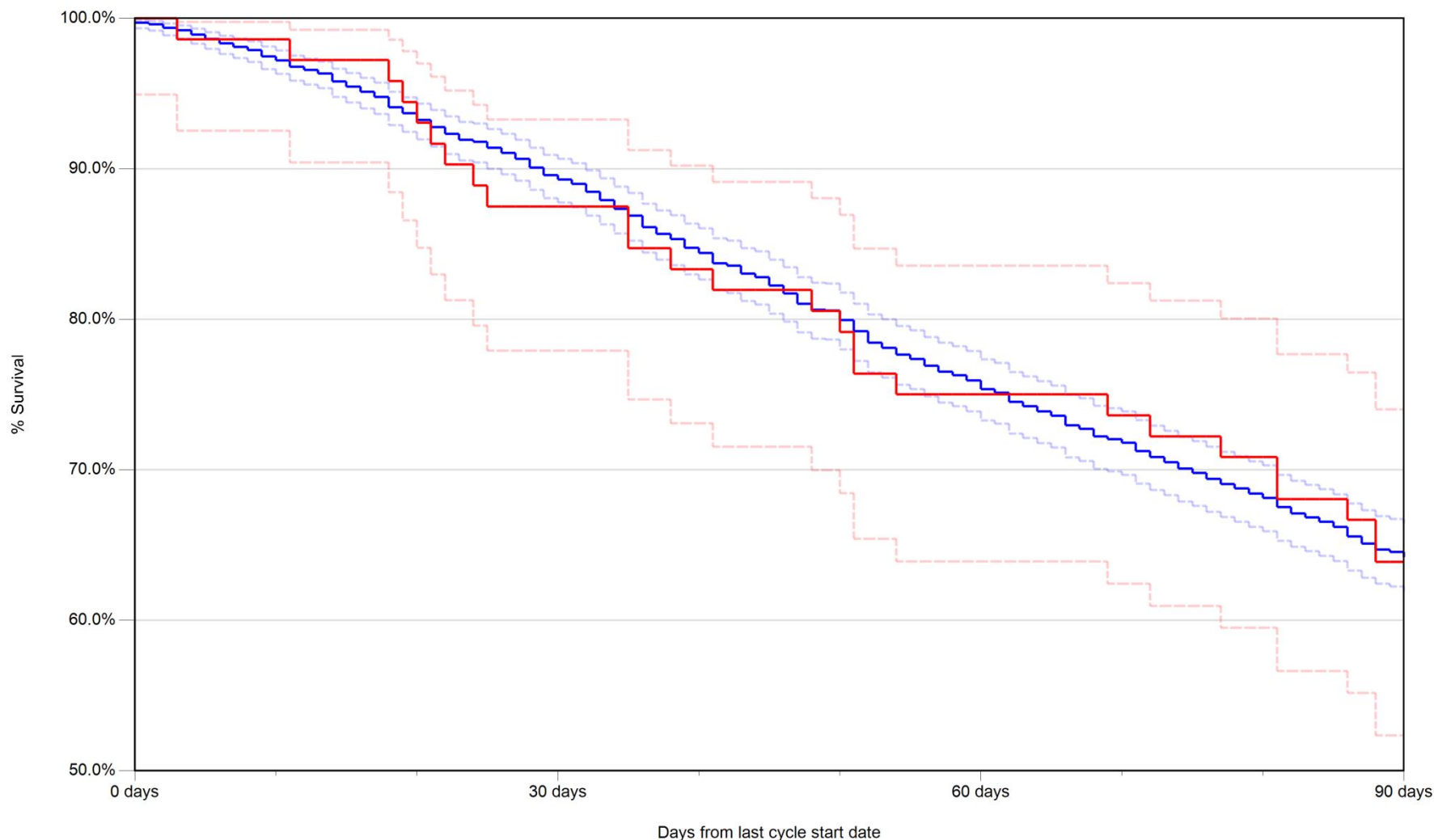
Public Health
England

Post Chemotherapy Survival Analysis

Upper GI (oesophago-gastric) palliative

For demonstration purposes only

— All submitting trusts aggregated — NHS Trust





Public Health
England

Online Regimen Mapping Tool Launched

- ✓ Providers now have the responsibility to map their local regimen names to nationally recognised regimen nomenclature using the new mapping tool.
- ✓ The tool was tested by members of the SACT User Group, before being launched on the upload portal.
- ✓ Using feedback, the written guidelines and step by step guide have been produced in conjunction with senior pharmacists who are supporting the team.
- ✓ We currently have over 50 registered users with the new role of “Regimen mapping”



Public Health
England

We want to identify best practice across England and share it!

- **Have You:**

- Improved SACT data quality by introducing new processes?
- Used your local SACT data to improve services, or your understanding of chemotherapy?
- Shared all SACT reports (Data Quality, Top Regimen, Benchmarking and the mortality reports) with your pharmacy and oncology teams members in order to improve understanding SACT and its purpose?

If yes, please contact us at CIU@phe.gov.uk!



Public Health
England

Improving Stakeholder Engagement

Members of the CIU team will be attending the following meetings in August / September:

- NHS England Area Team Pharmacist Meeting
- NCIN Breast Site Specific Clinical Reference Group (SSCRG)
- NCIN Lung SSCRG
- NHS England Chemotherapy Clinical Reference Group
- NCIN Central Nervous System SSCRG
- NCIN Haematology SSCRG

Would you like to know more about SACT? Please contact the team, we are always happy to discuss the project or meet with you.

E-mail: CIU@phe.gov.uk