



Public Health
England

Head & Neck cancer work programme

Gabi Price

Senior Public Health Analyst

Knowledge and Intelligence Team (South East)



- ❖ Head & Neck cancer hub
- ❖ Data briefing
 - *Thyroid cancer – trends by sex, age and histological type*
- ❖ Peer reviewed journal article
 - *Place of Surgery by Workload Volume before and after Publication of the NICE Guidance on Head and Neck Cancer Services*



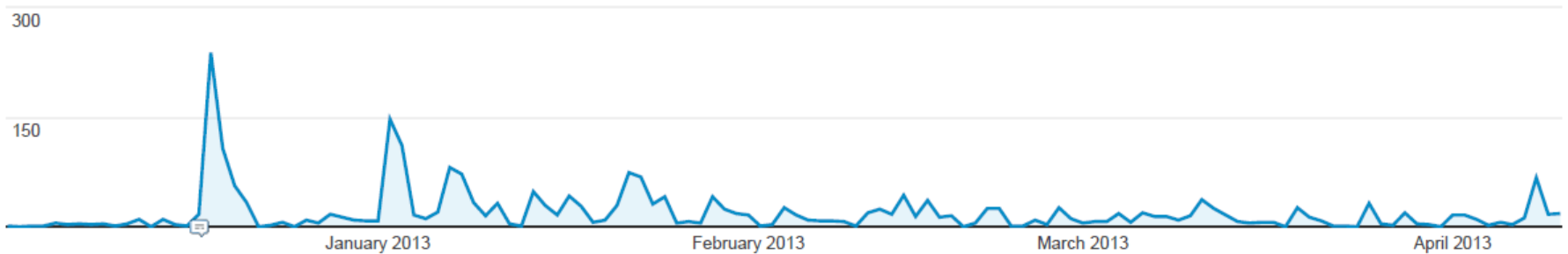
Head & Neck cancer hub

- ❖ Created with the aim to improve the accessibility and visibility of the hub content
- ❖ Designed to support the work of the Head & Neck Cancers Clinical Reference Group
- ❖ Provides data and intelligence on H&N cancers
- ❖ Aimed at a wide range of professionals working in the field (NHS providers, commissioners, charities and clinicians), but also at patients and the general public



Head & Neck cancer hub

Google Analytics statistics



- ❖ 2,521 page views ➔ 1,843 being unique page views
- ❖ Nearly half of visits related to H&N cancer e-atlas



Head & Neck cancer hub



- Hub home
- Resources
- Profiles
- Factsheets
- National Head and Neck Cancer Audit
- Evidence
- Information requests
- Information for Patients and Carers
- Professional Associations
- Contact Us

home > Cancer Type and Topic Specific Work > Cancer Type Specific Work > Head & neck cancers

NCIN
national cancer intelligence network
Using information to improve quality & choice

SEARCH

About NCIN News and Events Collecting and Using Data Publications Cancer Information Tools **Cancer Type and Topic Specific Work**

CANCER TYPE AND TOPIC SPECIFIC WORK

- Cancer Type Specific Work Summary 2010-11
 - Breast cancer
 - Children & TYA cancers
 - CNS cancers
 - Colorectal cancer
 - Gynaecological Cancers
 - Haematological cancers
 - **Head & neck cancers**
 - Lung cancer
 - Sarcomas
 - Skin cancer
 - Upper GI cancers
 - Urological cancers
 - Site Specific Clinical Reference Groups
- Topic specific work
 - Awareness & Early Diagnosis
 - Equality
 - Primary Care

Head and Neck Cancers

This page provides details of NCIN's work on head and neck cancers and of the Head and Neck Cancer Site Specific Clinical Reference Group (SSCRG).

The head and neck site specific clinical reference group

This group covers cancers of the head and neck, including the larynx, oral cavity, pharynx and major salivary glands.

The Chair of the Head and Neck SSCRG is Mr Richard Wight, ENT consultant at The James Cook University Hospital, Middlesbrough, and National Clinical Lead for Head and Neck cancers.

The lead cancer registry for Head and Neck is the [Oxford Cancer Intelligence Unit \(OCIU\)](#). They support the SSCRG's analytical work programme and lead on requests for data on head and neck cancers.

The Head and Neck Cancer Hub

The [Head and Neck Cancer Hub](#) is new to the NCIN website!

The aim is to improve the manageability, accessibility and visibility of the Hub content. It is also a natural move in preparation for transition to Public Health England, which supports greater alignment and integration of public health intelligence resources on the web.

External links to information on head and neck cancers

Peer review measures

- [Peer review measures for head and neck cancers](#)

UK guidance on head and neck cancers

- [The National Institute for Health and Clinical Excellence \(NICE\)](#)
- [Scottish Intercollegiate Guidelines Network](#)

Other sources of information on head and neck cancers

- [The National Head and Neck Cancer Audit \(DAHNO\)](#)
- [The British Association of Head & Neck Cancer Oncologists \(BAHNO\)](#)

Information for patients and carers

- [Let's Face It](#)
- [National Association of Laryngectomy Clubs](#)



Head & Neck cancer hub



- [Hub home](#)
- [Resources](#)
- [Profiles](#)
- [Factsheets](#)
- [National Head and Neck Cancer Audit](#)
- [Evidence](#)
- [Information requests](#)
- [Information for Patients and Carers](#)
- [Professional Associations](#)
- [Contact Us](#)

➤ Range of analytical outputs, including:

- Data briefings
- Reports

➤ Presentations

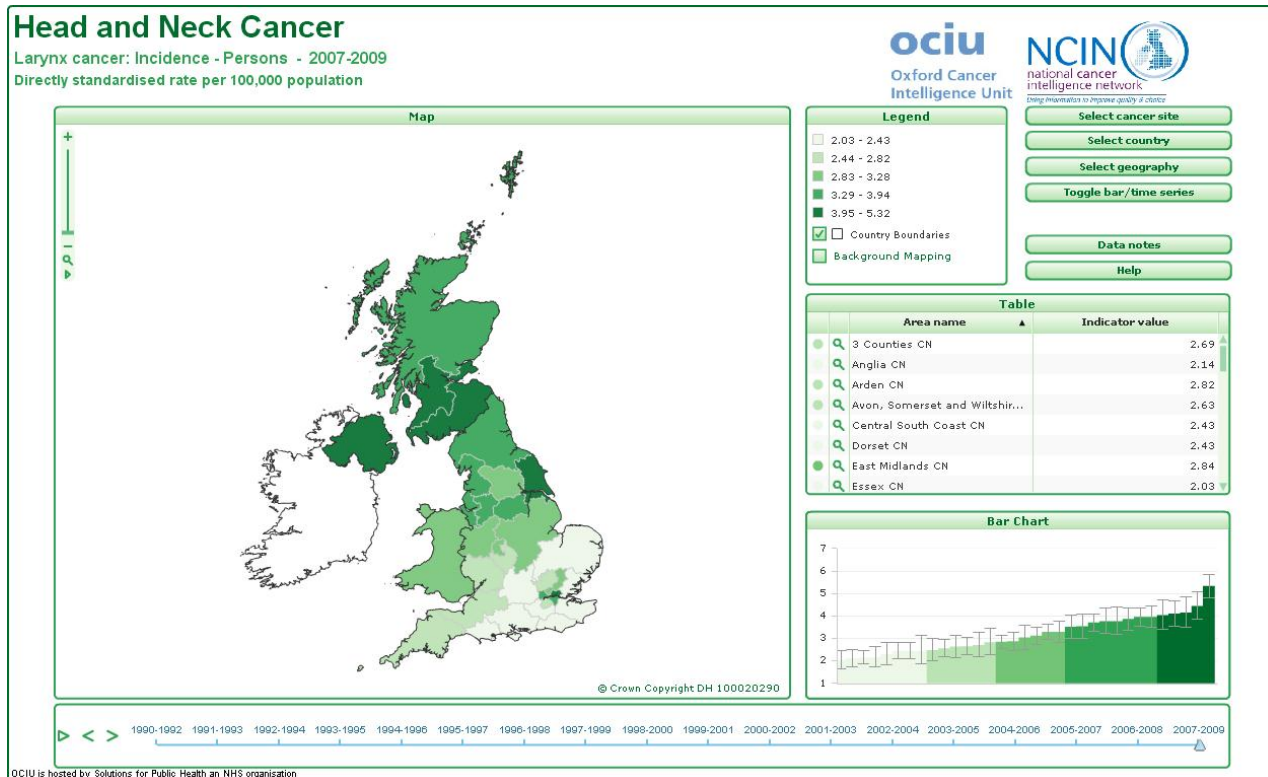


Head & Neck cancer hub



- Hub home
- Resources
- Profiles
- Factsheets
- National Head and Neck Cancer Audit
- Evidence
- Information requests
- Information for Patients and Carers
- Professional Associations
- Contact Us

Head & Neck cancer incidence for the period 1990-92 to 2007-09 and up to 2008-10 for mortality





Head & Neck cancer hub



- Hub home
- Resources
- Profiles
- Factsheets
- National Head and Neck Cancer Audit
- Evidence
- Information requests
- Information for Patients and Carers
- Professional Associations
- Contact Us

Head and Neck Cancer Factsheets

A range of head and neck cancer related factsheets have been produced by other organisations. The factsheets are intended to provide an overview of the current incidence, mortality and survival rates in the UK for the main head and neck cancer sub-types.

National Head and Neck Cancer Audit

Data for head and neck oncology (DAHNO)

The National Head and Neck Cancer Audit was commissioned and sponsored by the Healthcare Quality Improvement Partnership, HQIP developed in partnership with BAHNO (British Association of Head and Neck Oncologists) and managed by the Health and Social Care Information Centre (HSCIC).

Head and Neck Cancer Evidence

There are a number of peer-reviewed journals, which cover head and neck cancers. There are also online, searchable libraries, which provide details of publications in journals and elsewhere. These are listed below, along with sources of data and statistics.

Other information is available through the [head and neck cancer e-atlas](#).

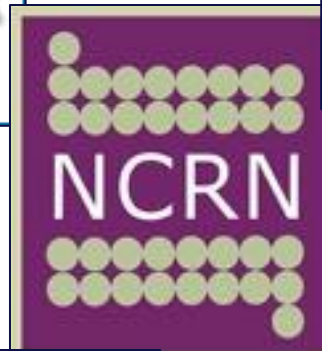


Public Health
England

Head & Neck cancer hub



- Hub home
- Resources
- Profiles
- Factsheets
- National Head and Neck Cancer Audit
- Evidence
- Information requests
- Information for Patients and Carers
- Professional Associations
- Contact Us





Thyroid cancer – trends by sex, age and histological type

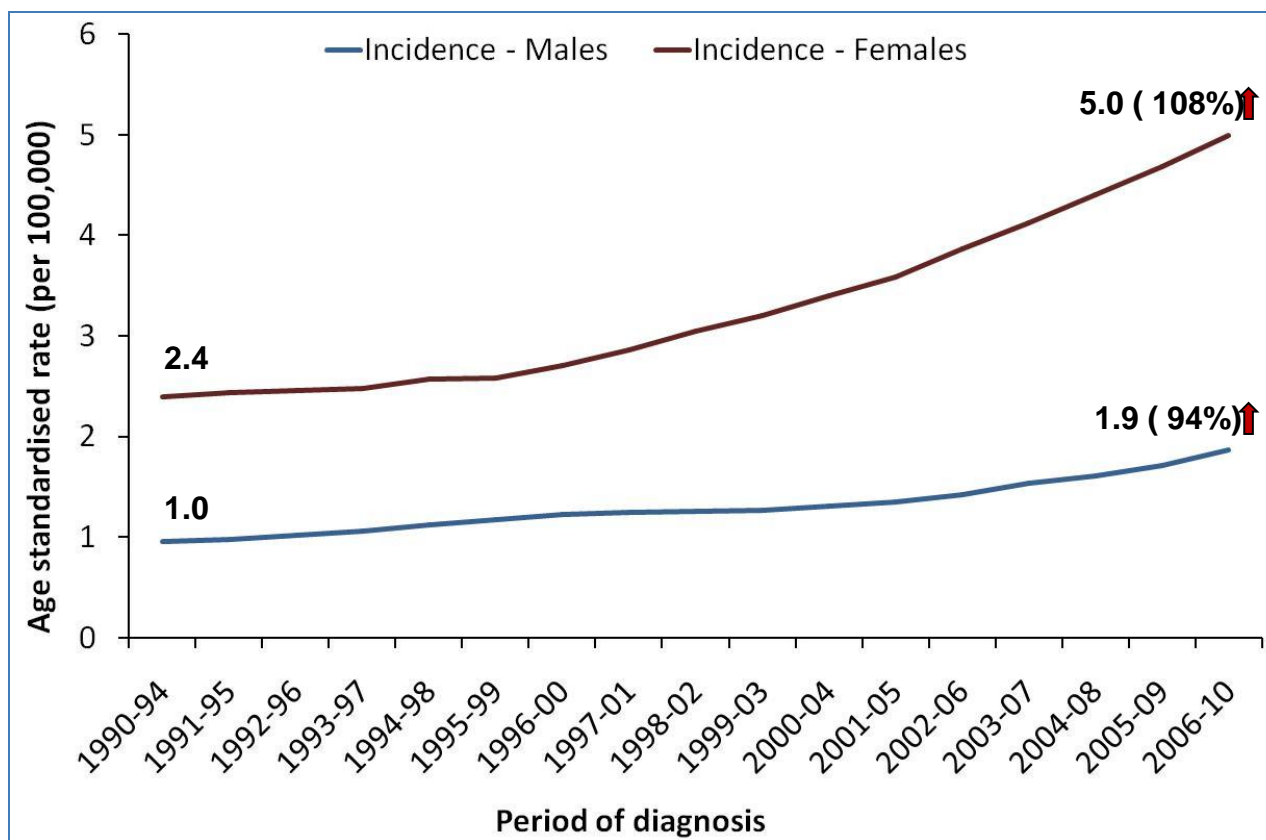
➤ Aim of the briefing: to examine trends in the incidence, mortality and one year relative survival in England by sex, age and histological type (1990-94 and 2006-10)

- Thyroid cancer around three times more common in women than in men
- Patients under 45 years of age and those aged 45 or over can have different prognosis for tumours of similar characteristics
- Four main histologies: papillary, follicular, medullary or anaplastic



Thyroid cancer – by sex

✓ Incidence (1990-94 to 2006-10)

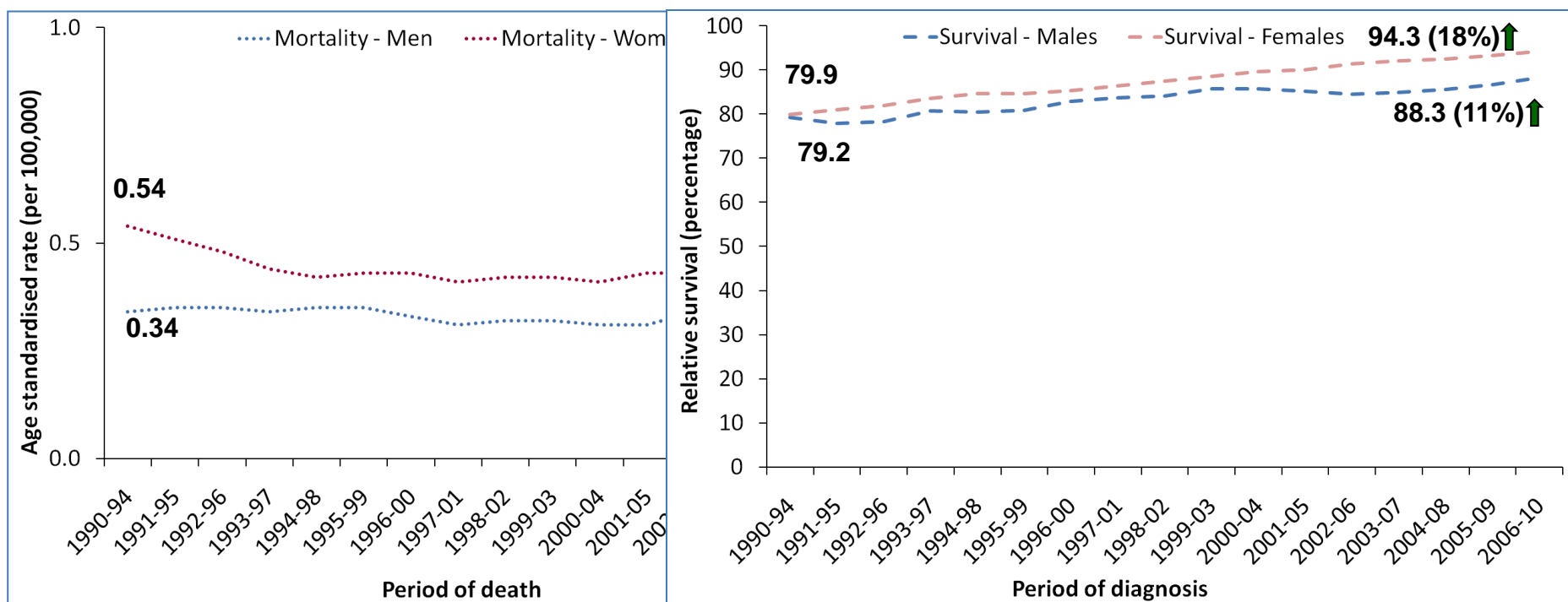


➤ Around three times as many cancers in women than in men, with about **670** average cases per year for women and **230** for men (1990-94) rising to over **1420** and **520** respectively (2006-10).



Thyroid cancer – by sex

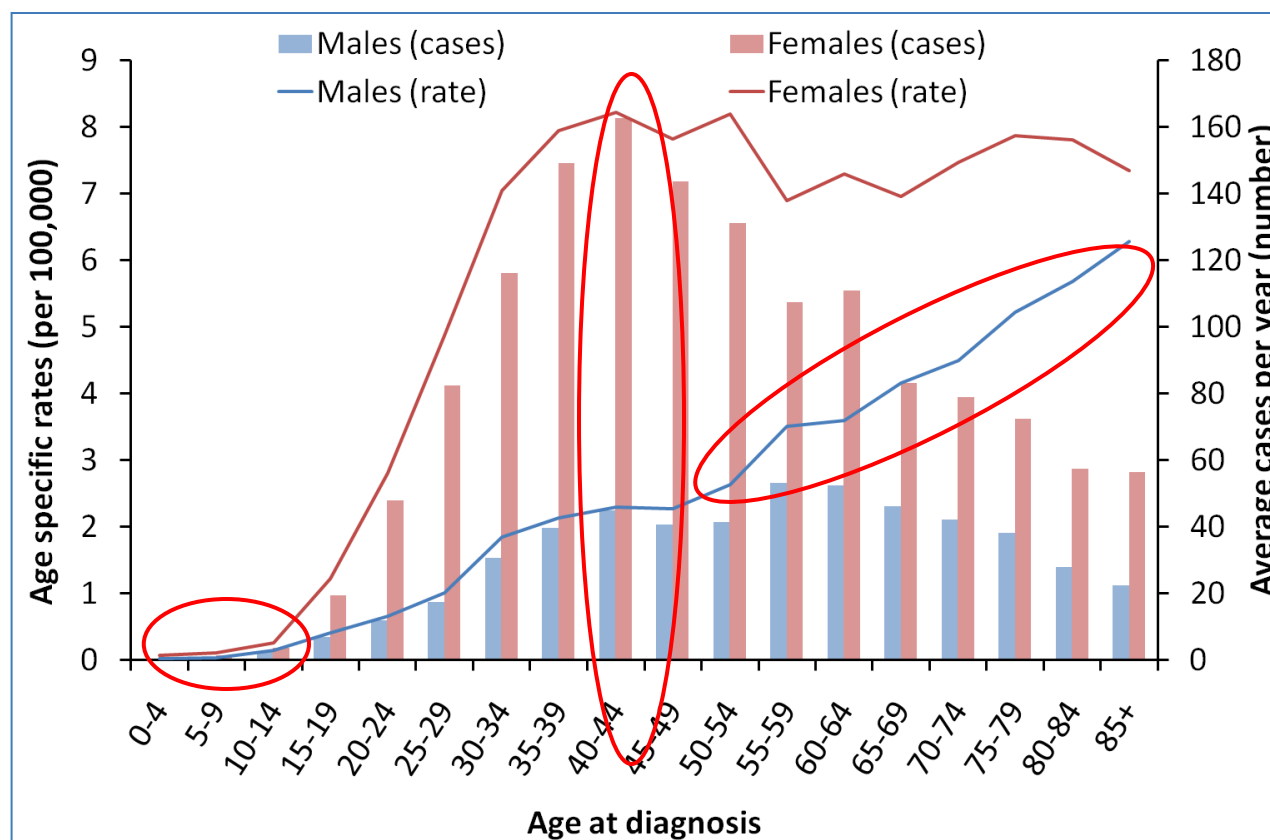
- ✓ Mortality (1990-94 to 2006-10) ✓ One year relative survival (1990-94 to 2006-10)





Thyroid cancer – by age

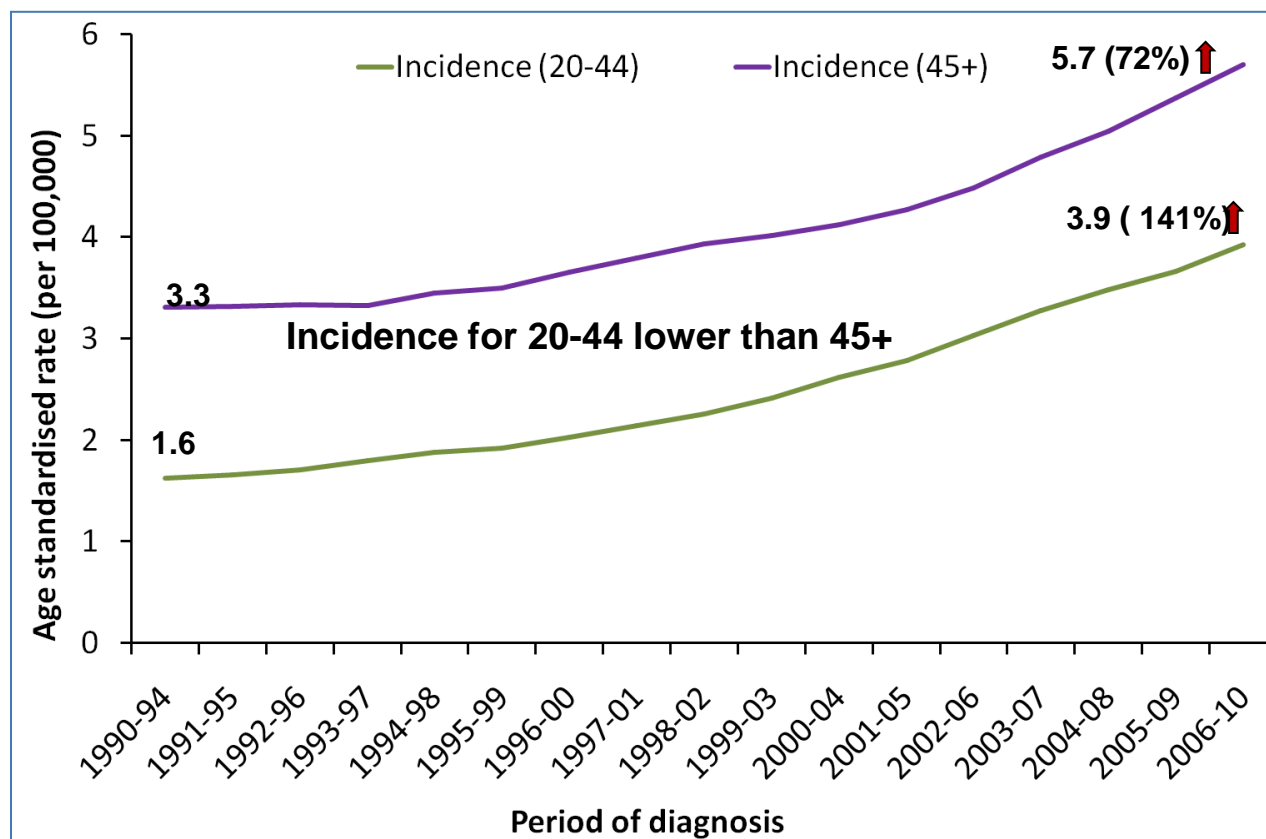
- ✓ Incidence rates and average number of new cases per year by age, 2006-10





Thyroid cancer – by age

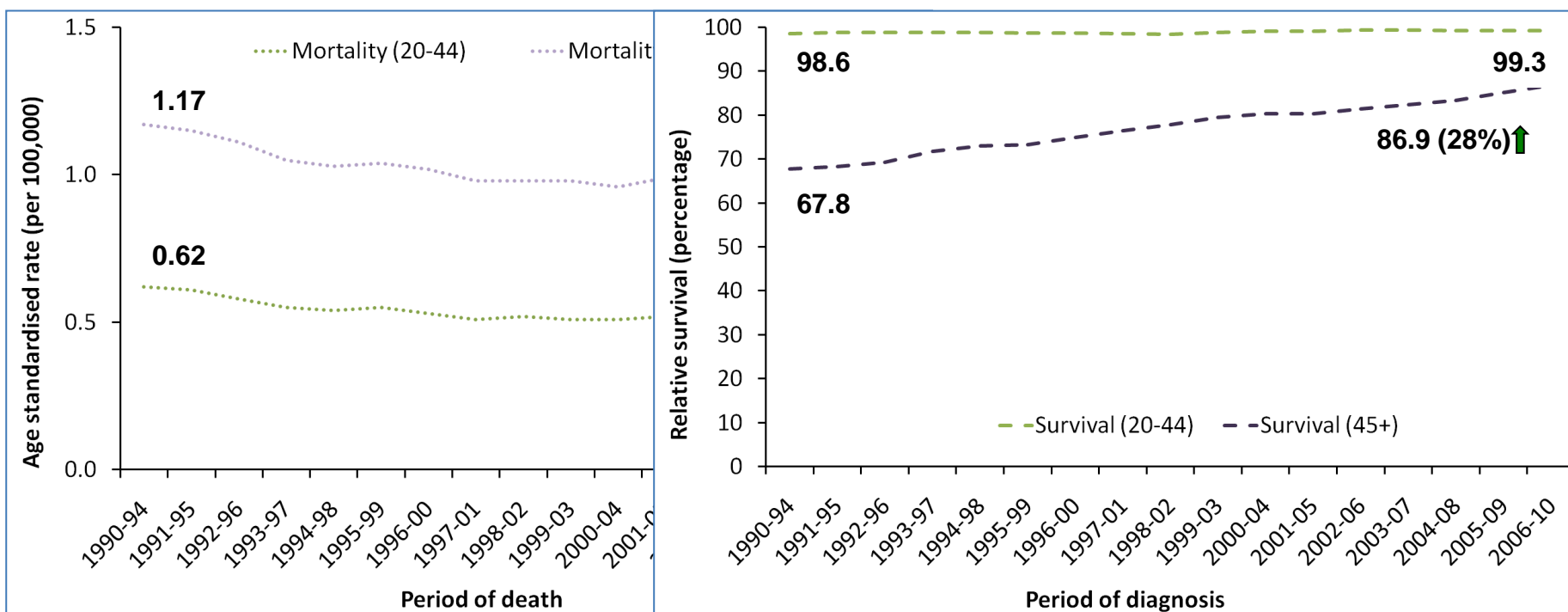
✓ Incidence (1990-94 to 2006-10)





Thyroid cancer – by age

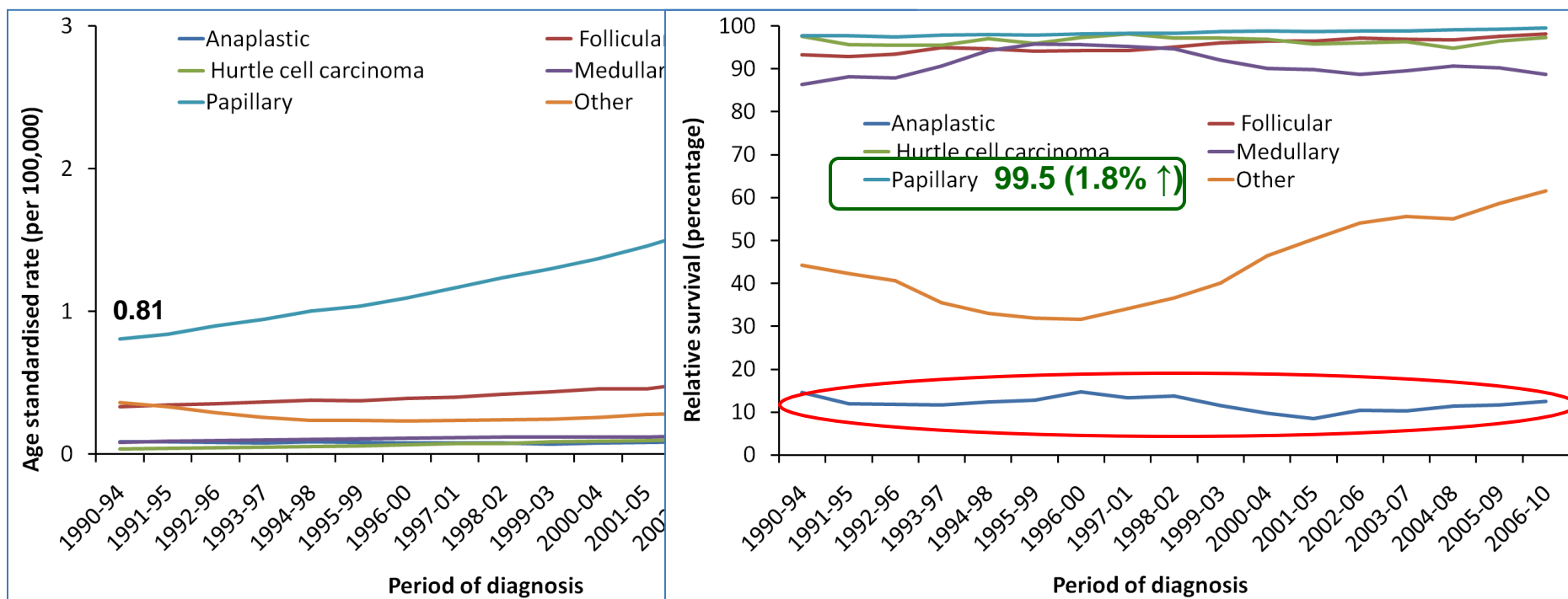
✓ Mortality (1990-94 to 2006-10) ✓ One year relative survival (1990-94 to 2006-10)





Thyroid cancer – by histological type

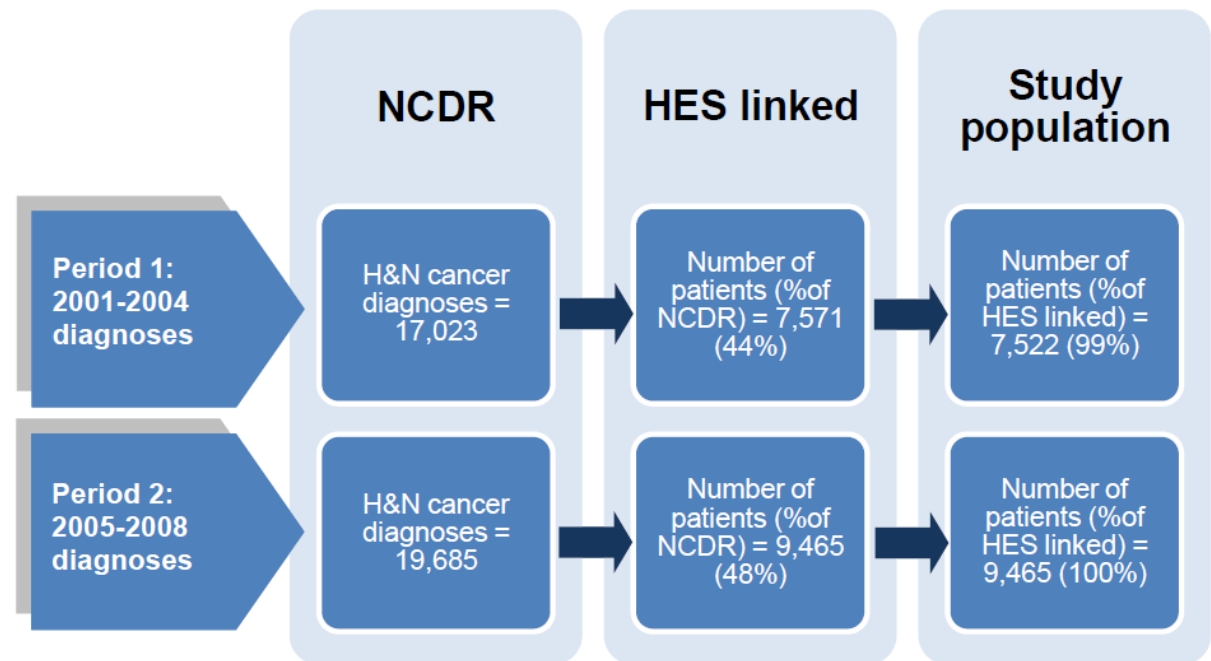
✓ Incidence (1990-94 to 2006-10) ✓ One year relative survival (1990-94 to 2006-10)





Place of surgery – H&N cancers

- Did the H&N cancer IOG (Nov 2004) achieve a change in the place of surgery for H&N cancer patients and the surgical workload volume patterns in England?
- What was the time lag between the publication of the guidance and changes in H&N cancer service provision?





Public Health
England

Any questions?

Gabriele.Price@phe.gov.uk