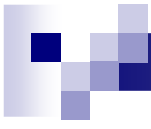




# NWCIS TYA Update October 2012

NCIN CTYA CRG Work Programme 2012-2013



These slides contain preliminary analyses of on-going as yet unpublished work and should not be reproduced without prior consent from Catherine O'Hara  
[catherine.ohara@nhs.net](mailto:catherine.ohara@nhs.net)



# 1. Survival in Teenagers and young adults

- 5 year TYA < Children

5 year survival 2001 to 2005

- ☐ ALL

- ☐ AML

- ☐ NHL

- ☐ Extra gonadal germ cell tumours

For data please refer to

[Survival in Teenagers and Young Adults with Cancer in the UK\\*\\*](#)

- 5 year TYA < children and older adults

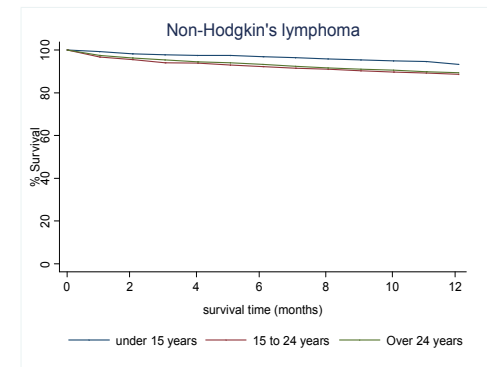
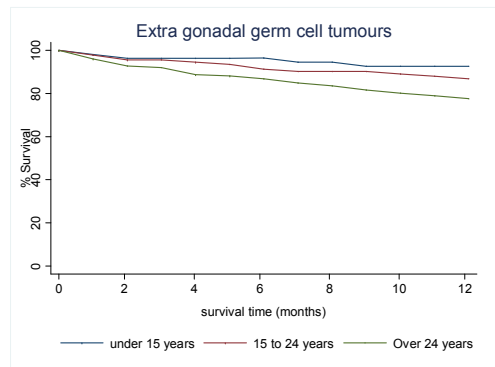
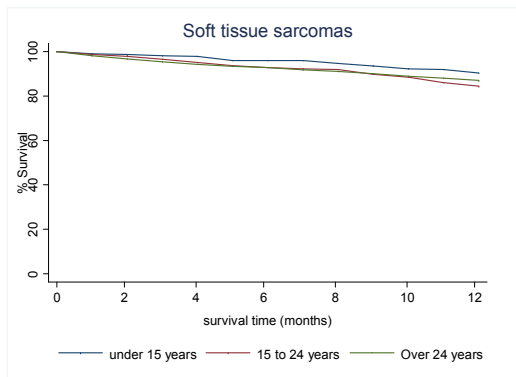
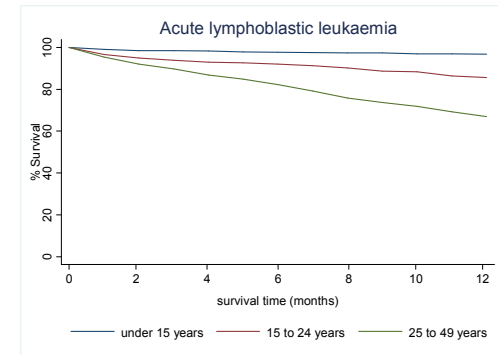
- ☐ Bone tumours

- ☐ STS

\*\*[http://www.ncin.org.uk/cancer\\_type\\_and\\_topic\\_specific\\_work/cancer\\_type\\_specific\\_work/cancer\\_in\\_children\\_teenagers\\_and\\_young\\_adults/default.aspx](http://www.ncin.org.uk/cancer_type_and_topic_specific_work/cancer_type_specific_work/cancer_in_children_teenagers_and_young_adults/default.aspx)

# Age differences appear within 1 year of diagnosis

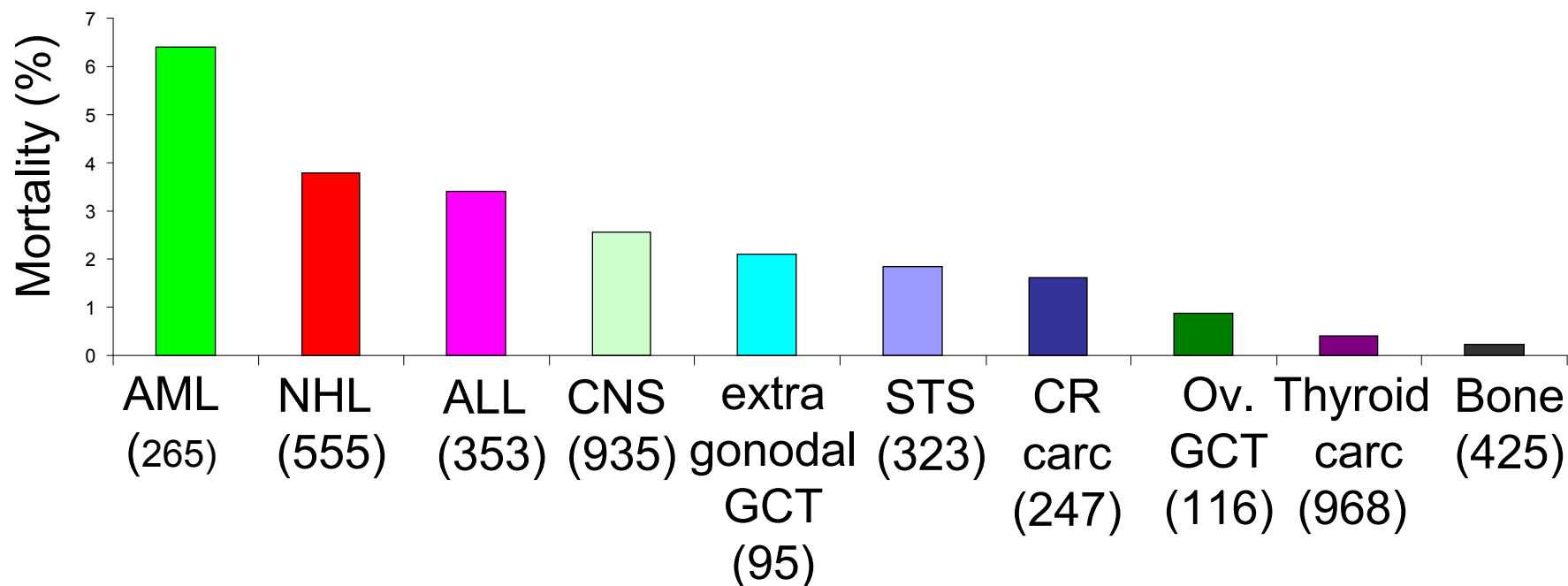
- ALL
- NHL
- Extra gonadal GCT
- STS



1 year survival 2005 to 2009

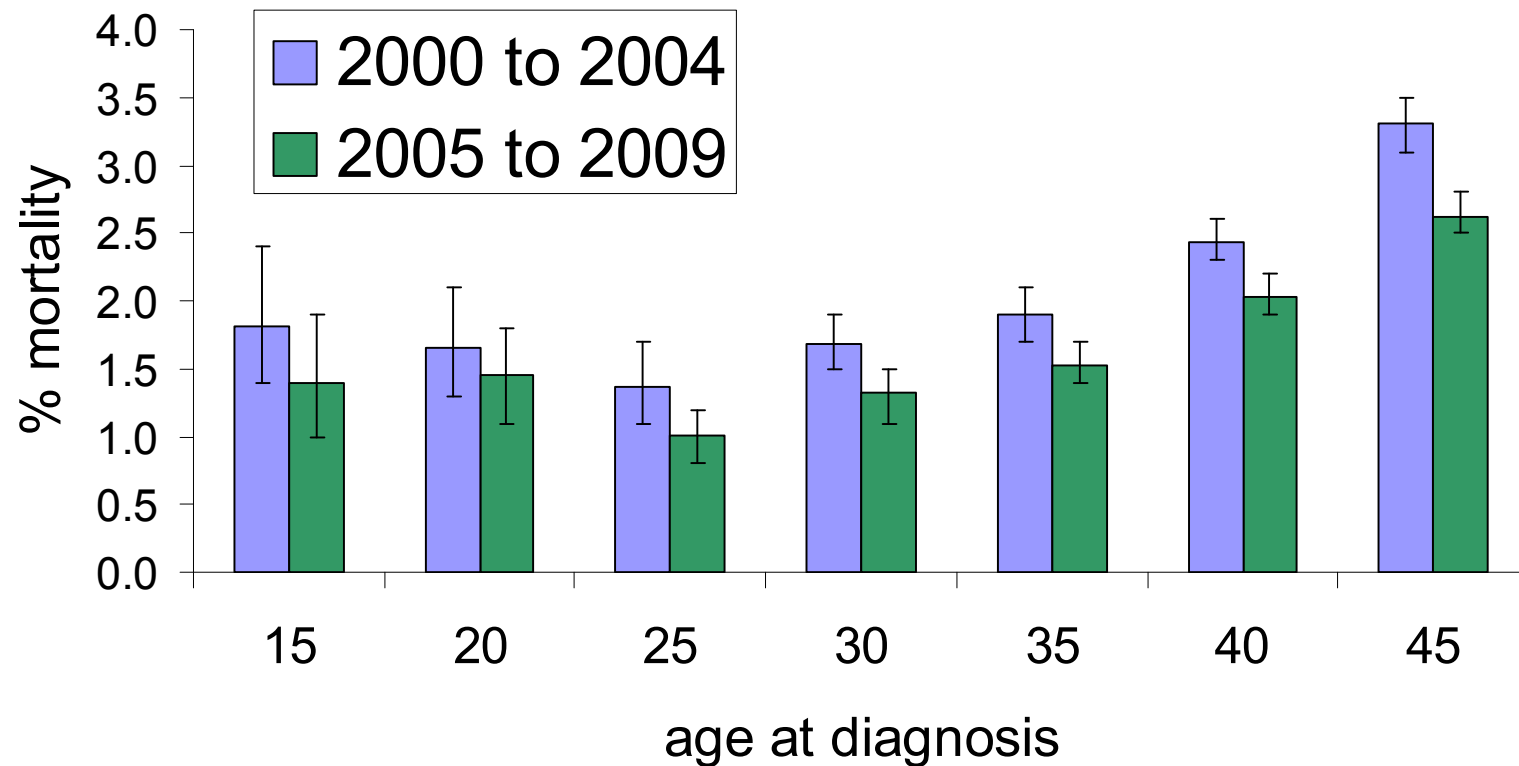
# TYA 30 day mortality 2005-2009

0% = HL, Melanoma, Testicular GCT & other head and neck, breast, cervical & ovarian carcinoma



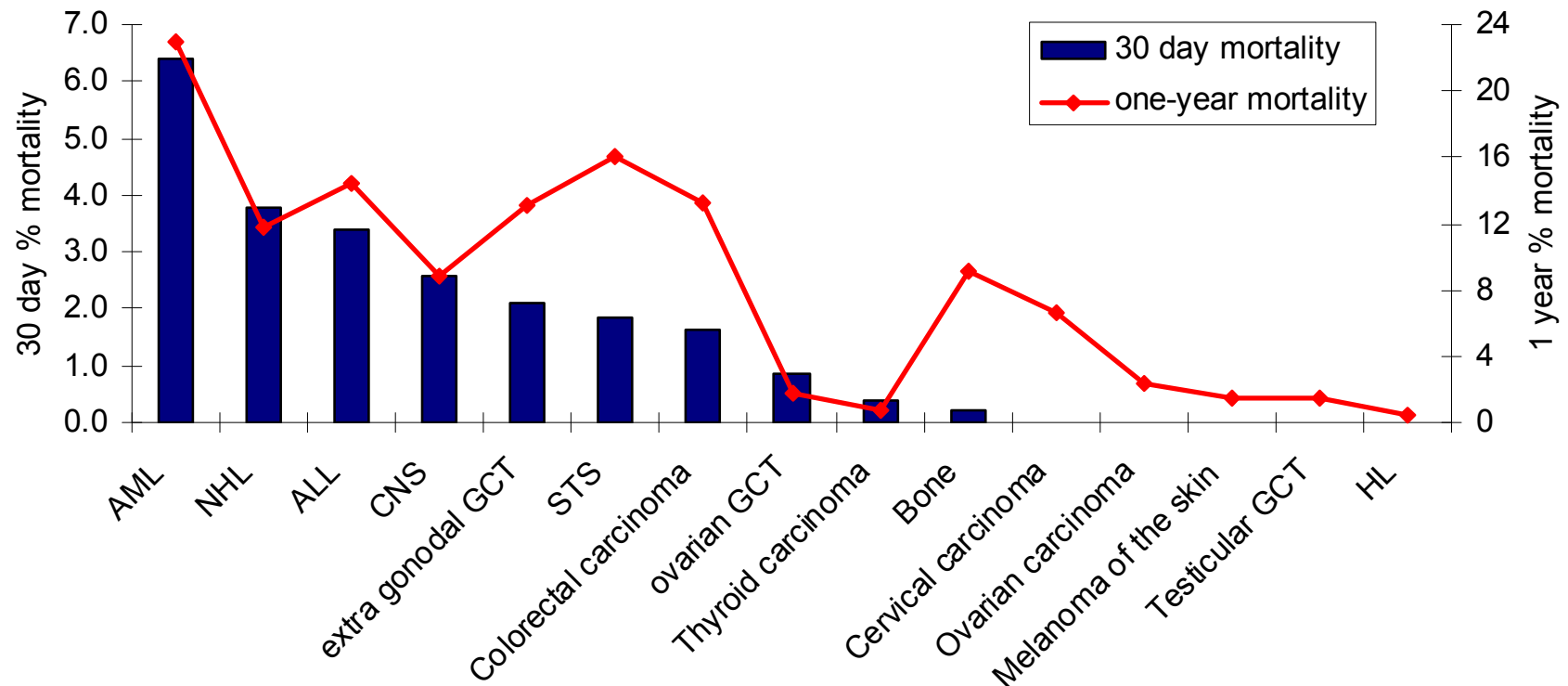
BUT – VERY SMALL NUMBER OF DEATHS PER YEAR

# TYA 30 day mortality 2000-2009



- No obvious TYA age association
- Some reduction over last 10 years
- No obvious geographical pattern

# 30 day and 1 year mortality





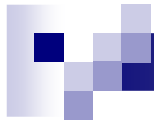
# Further work

- Possible reasons for early deaths focusing initially on Leukaemias
  - Patterns of deaths within the first year
  - Cause of death
  - Clinical trial accural
  - Routes to diagnosis



## 2. TYA Referrals to PCTs

- TYAC notifications submitted by each of the PTCs
- 2009 matched to 2009 England cancer registrations

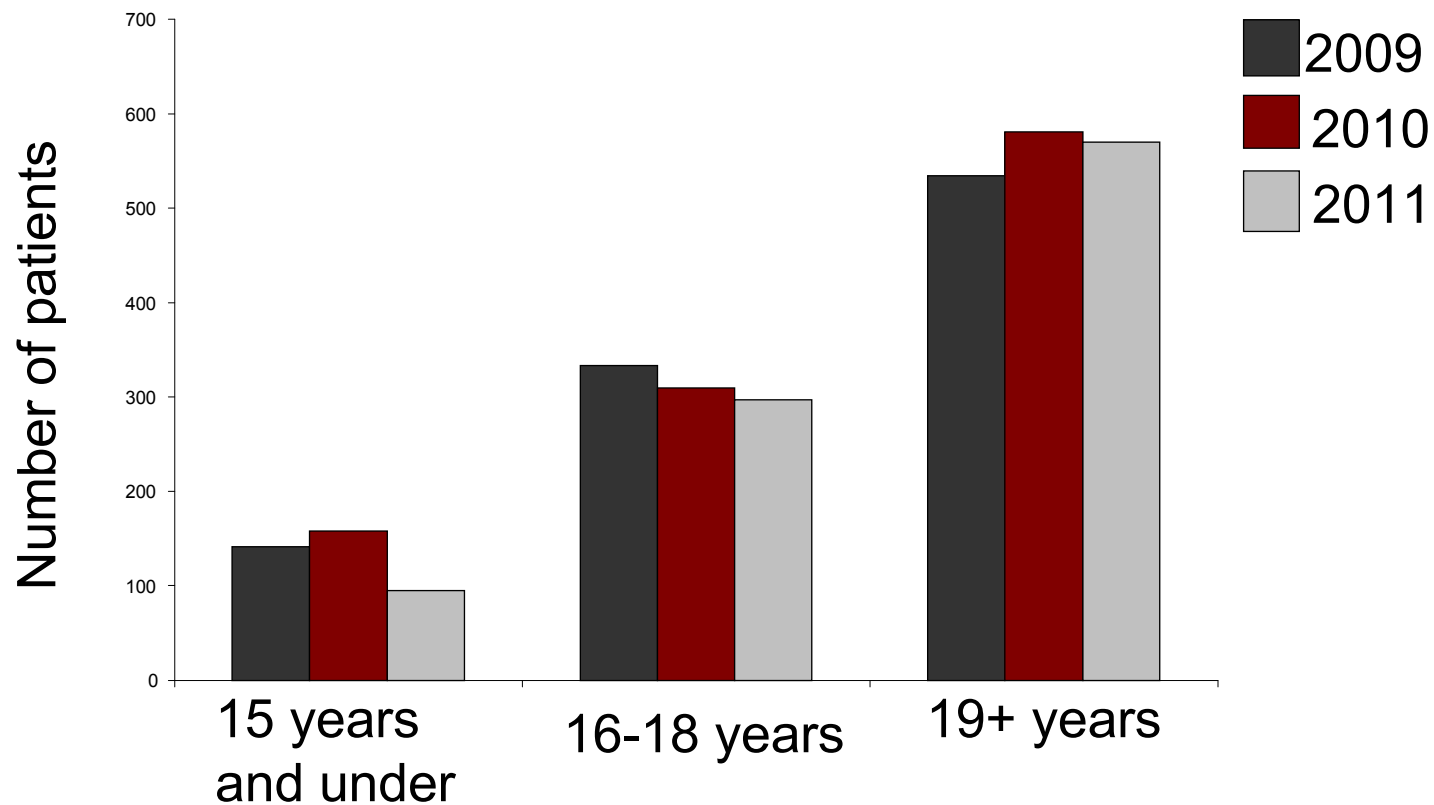


# TYA Referrals to PCTs

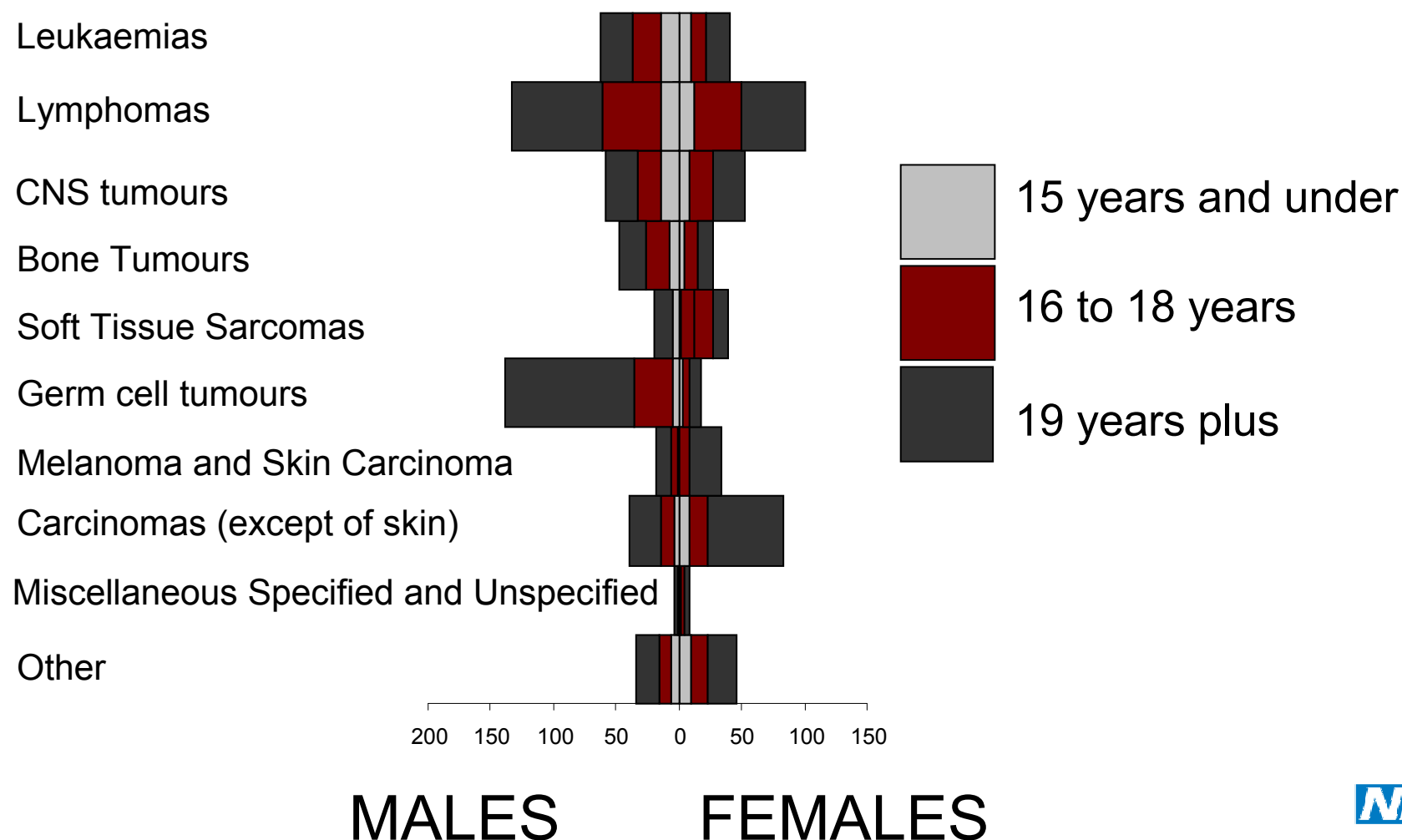
UK

- Estimated cases diagnosed per year 2009-2011
  - 640 aged 15 to 18 years
  - 1600 aged 19 to 24 years
- Number (%) notified to a PTC
  - 15 to 18 year olds: 69%
  - 19 to 24 years: 32%

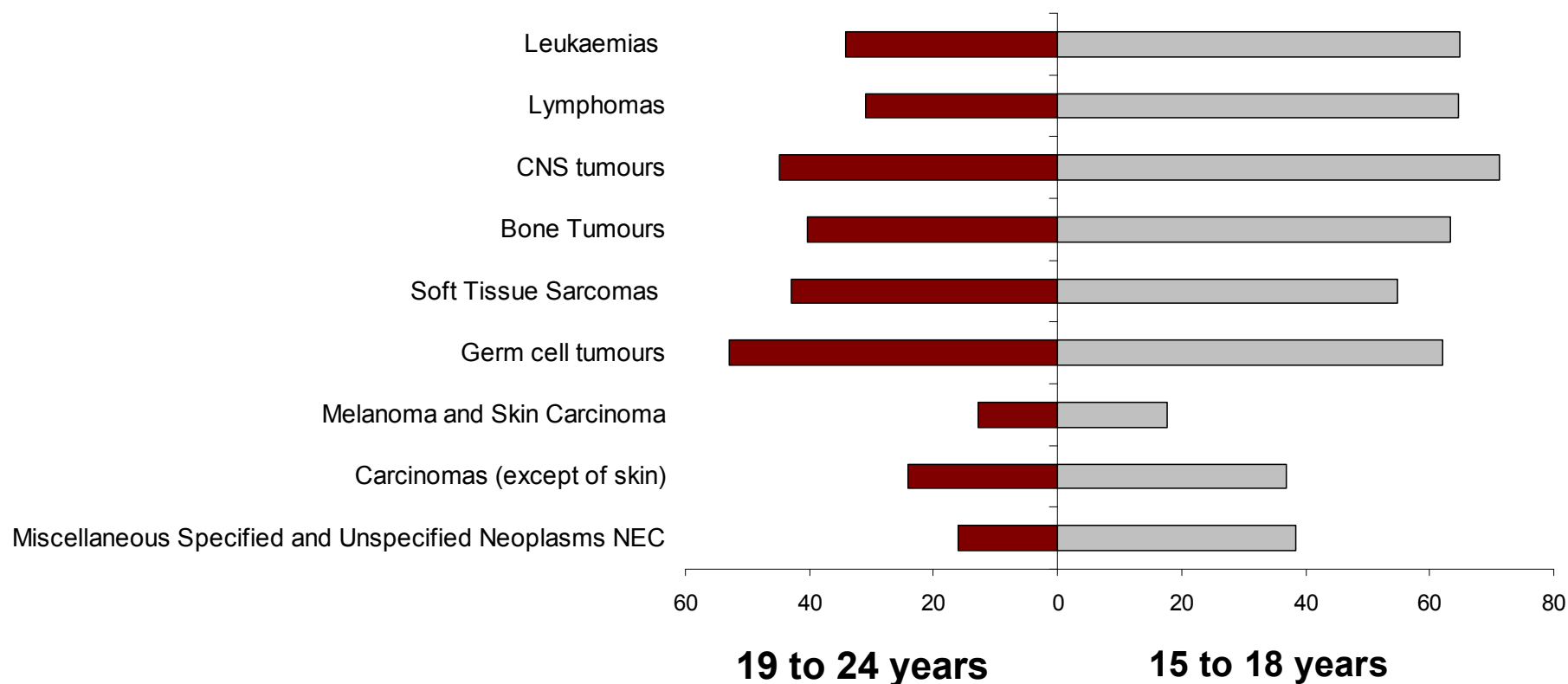
# Number of patients diagnosed and notified per year by age group



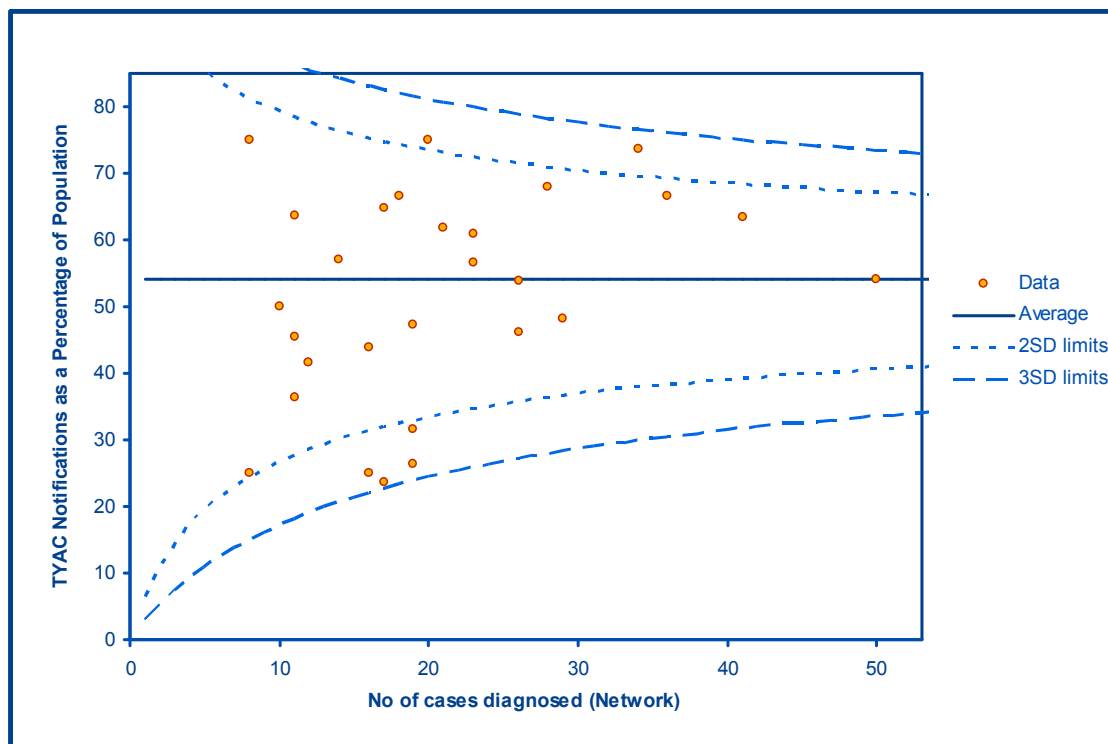
# Number of patients diagnosed and notified per year



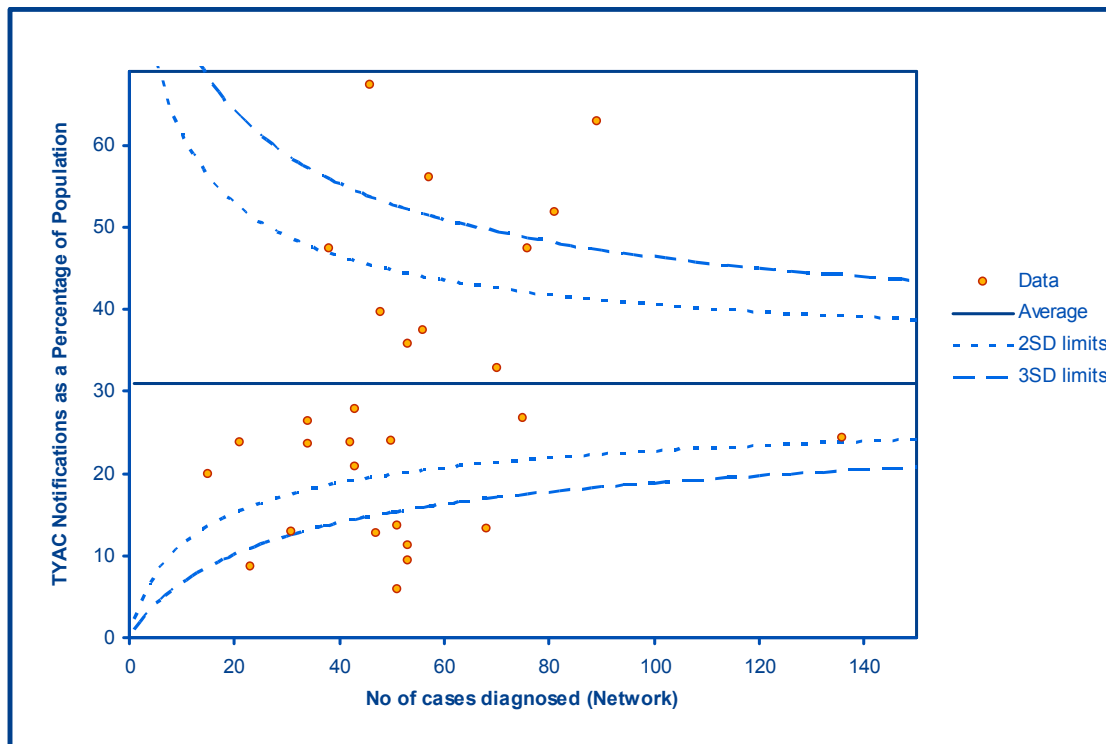
# % 2009 patients notified in England by diagnosis and age



# 2009 notifications 15 to 18 year olds in England



# 2009 notifications 19 to 24 year olds in England





# Further work

- Update notification rates for 2010
- Develop standardised method for measuring PTC referral rates that takes account of regional PTC designated trusts
- Identify where non-PTC patients are being treated
- Identify if any patterns exist in non-notification of patients



# Future of TYAC notifications