

Living with and Beyond Cancer



MDT Conference 3.3.2010

Statistics

- ◆ 1.6 million people are living with cancer in England (2 million across the UK)
- ◆ Two thirds are over 65
- ◆ 3 out of 5 are women
- ◆ Breast, prostate and colorectal cancer account for half of these numbers
- ◆ In the UK 1.24 million were diagnosed more than 5 years ago
- ◆ The numbers of survivors is likely to grow by over 3% per year

Patient Experience – priority areas

- ◆ Information, communication, decision making and choice
- ◆ Coordination and continuity of care
- ◆ Psychological support
- ◆ Supportive and Palliative care
- ◆ The critical importance of Clinical Nurse Specialists (CNSs)

Patient Experience – priority areas

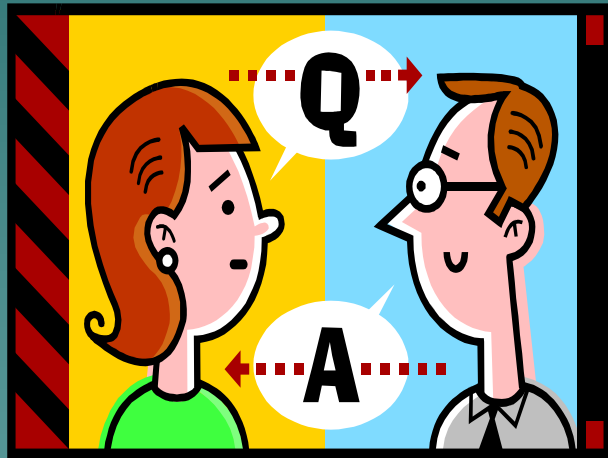
- ◆ Appropriate training for healthcare professionals
- ◆ Helping patients meet the cost of cancer
- ◆ Surviving cancer
- ◆ Measuring patients' experiences

Information



Pathways and
Prescriptions

Communication



- ◆ Advanced Communication Skills Training
- ◆ Communication of Significant News

Decision Making and Choice



- ◆ Location
- ◆ Treatment
- ◆ Informed decision - making

Coordination and Continuity of Care



- ◆ MDT working
- ◆ Pathways
- ◆ Role of keyworker
- ◆ Assessment
- ◆ Care planning
- ◆ Communication

Psychological Support

- ◆ Access to support
- ◆ Availability of psychological therapies
- ◆ Training for professionals, particularly CNSs
- ◆ Peer Review measures in development



Supportive and Palliative Care



- ◆ NICE Guidance (2004)
- ◆ Dignity and respect
- ◆ Holistic care
- ◆ User involvement
- ◆ End of Life tools
- ◆ Place of death
- ◆ Bereavement

The Role of Clinical Nurse Specialists



- ◆ Communication and information
- ◆ Psychological and emotional support
- ◆ Continuity of care
- ◆ Keyworker
- ◆ Supporting and advising

Appropriate Training for Healthcare Professionals



- ◆ Deliver information to patients
- ◆ Work as part of an integrated MDT
- ◆ To assess and respond to the needs of cancer patients
- ◆ Engage in difficult conversations

Helping Patients Meet the Cost of Cancer



- ◆ Ability to work
- ◆ Access to benefits
- ◆ Travel for treatment
- ◆ Home care
- ◆ Heating

Surviving Cancer



- ◆ Psychosocial issues - anxiety, depression, isolation
- ◆ Physical symptoms – fatigue, breathlessness
- ◆ Difficulties in the workplace
- ◆ Lack of information
- ◆ Effects on sexuality

Measuring patients' experiences

Cancer Patient Experience Survey Programme



- ◆ Whether patients feel supported
- ◆ Was their care coordinated
- ◆ The impact of the CNS on care

Questions?

The image features a solid teal background with a subtle gradient. In the bottom right corner, there is a stylized, low-poly silhouette of a mountain range in a darker shade of teal. The word "Questions?" is centered in the upper half of the image in a light yellow, sans-serif font with a slight drop shadow.